

ROLLER 225

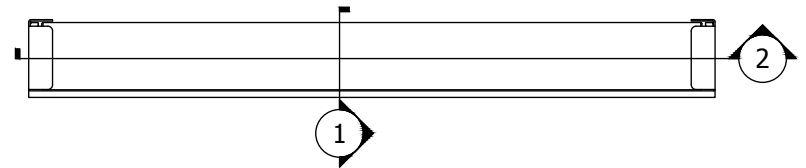
JAMB MOUNT SHADE IN 7"x7" POCKET

31.62" [803mm]
MINIMUM WIDTH OF SHADE

5.81" [148mm]

.75" [19 mm] MINIMUM LIGHT GAP

MULTIPLE MOUNTING CONFIGURATIONS ARE ALLOWED: THIS BRACKET SUPPORTS CEILING, WALL OR JAMB MOUNTING (CEILING MOUNT SHOWN).



LEGEND (TOP VIEW)

SHADE INSTALLED AS PROVIDED BY FACTORY WILL HAVE ALL NECESSARY CLEARANCES FOR PROPER OPERATION. IF ADJUSTMENT FEATURES ARE UTILIZED, IT IS THE RESPONSIBILITY OF THE INSTALLER TO ENSURE PROPER CLEARANCES ARE MAINTAINED. NOT ALL ADJUSTMENTS ARE AVAILABLE AT MAXIMUM ROLL Ø.

ROLLER 225

085524

SCALE: 1/4

VIEW: 2

REVISION: A