

Slide-to-Off Dimmer (single pole only)

Please read before installing.

P/N 0301892 Rev A
150 W CFL/LED
600 W Incand./Hal.

If using CFL or LED bulbs, they must be Lutron compatible for optimum performance.

For the list of compatible bulbs, please visit www.lutron.com/dimcflled

Help

Use our mobile friendly self-paced installation tool:

www.lutron.com/wiringwizard

Find more product information:

www.lutron.com/support

- Videos
- Frequently Asked Questions
- Online Chat (8 am–5 pm EST)

Call us 24/7:

U.S.A. | Canada | Caribbean

1.844.LUTRON1 (588.7661)

Mexico

+1.888.235.2910

Others

+1.610.282.3800

www.lutron.com/support

Limited Warranty:

www.lutron.com/TechnicalDocumentLibrary/369-119_Wallbox_Warranty.pdf

Lutron, Lutron, Claro, Satin Colors, and C·L are trademarks of Lutron Electronics Co., Inc., registered in the U.S. and other countries.

NEC is a registered trademark of National Fire Protection Association, Quincy, Massachusetts.

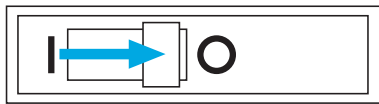
Lutron Electronics Co., Inc.

7200 Suter Road

Coopersburg, PA 18036

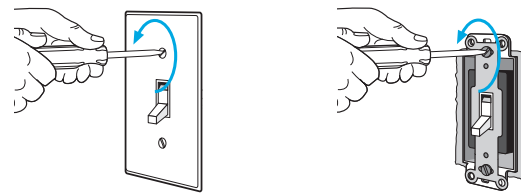
©2018 Lutron Electronics Co., Inc.

1 Turn power OFF at circuit breaker

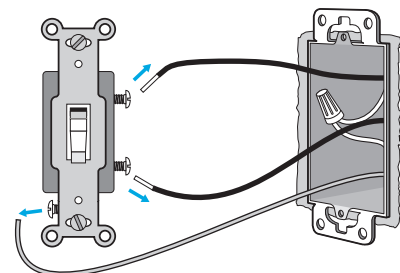


WARNING: SHOCK HAZARD. May result in serious injury or death. Turn off power at circuit breaker or fuse before installing.

2 Remove existing device



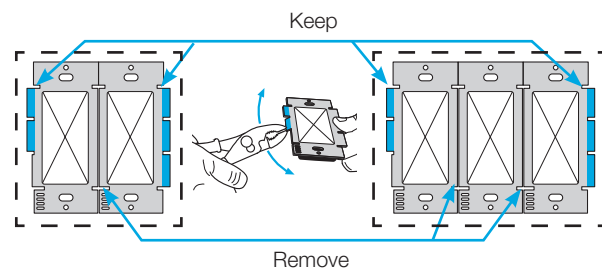
Disconnect wires.



3 Remove middle sections (if ganging devices)

Remove middle sections if mounting 2 or more devices side by side. See table below for the new wattage limits.

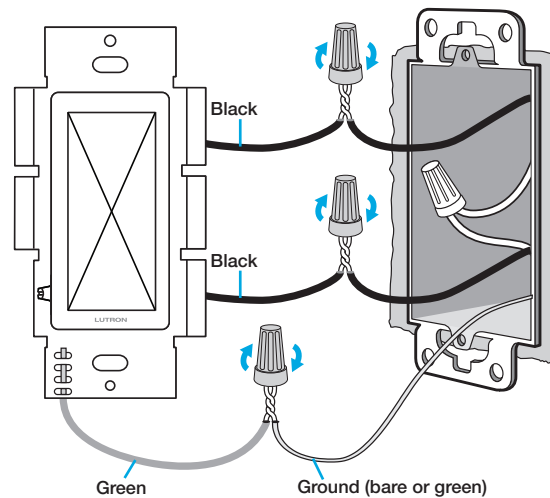
NOTE: No derating is required when using only CFLs or LEDs.



Maximum Ratings for Mixed Bulb Types

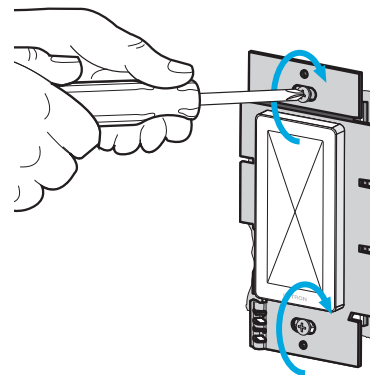
	CFL	LED	Incandescent / Halogen		
0 W	+		600 W	500 W	400 W
1 W – 25 W	+		500 W	400 W	300 W
26 W – 50 W	+		400 W	300 W	200 W
51 W – 75 W	+		300 W	200 W	100 W
76 W – 100 W	+		200 W	100 W	50 W
101 W – 125 W	+		100 W	50 W	0 W
126 W – 150 W	+		0 W	0 W	0 W

4 Connect the new dimmer

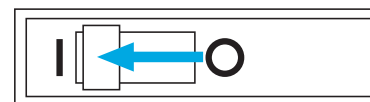


NOTE: Black wires are interchangeable.

5 Mount dimmer (using provided screws)



6 Turn power ON at circuit breaker



7 Adjust dimming range for CFLs and LEDs

Optional

With the slider at the lowest light level (but not off), turn the adjustment lever counter-clockwise until there is no flicker.

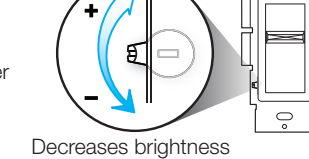
Turn bulbs off and on. If all bulbs do not turn on or are not stable, turn the adjustment lever clockwise slightly until there is no flicker.

If bulbs are still flickering, buzzing or dropping out, they may not be compatible. Please visit www.lutron.com/dimcflled to check the Compatible Bulb List.

Adjustment Lever

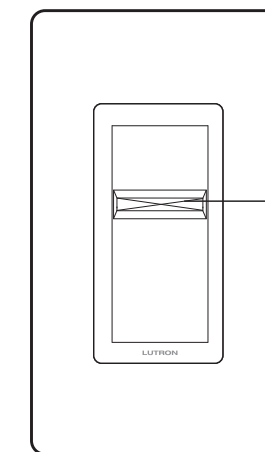
Increases brightness

Decreases brightness



8 Install wallplate (not included)

Operation



Slider
Select light level and turn off lights.

+ Up
Increases light level

- Down
Decreases light level and turn off lights

Troubleshooting

Symptom	Solution
CFL or LED bulbs do not dim, have poor dimming range, or flicker/flash.	<ul style="list-style-type: none"> Verify that the bulbs are marked as dimmable. Adjust the dimming range (see step 7). Ensure the bulbs are on the Compatible Bulb List at www.lutron.com/dimcflled
Bulb or dimmer buzzes when lights are on.	<ul style="list-style-type: none"> CFL and LED bulbs have electrical components that can make noise for a variety of reasons. Since the amount of noise is highly dependent on bulb design, the best solution is to try a different bulb.
Lights do not turn off.	<ul style="list-style-type: none"> Move the slider down until it clicks into the off position.
Other issues.	<ul style="list-style-type: none"> Please visit www.lutron.com/support

IMPORTANT

- CAUTION: Use only with permanently installed fixtures with dimmable screw-in compact fluorescent, dimmable screw-in LED, halogen, or incandescent bulbs. To avoid overheating and possible damage to other equipment, do not use to control receptacles, motor-driven appliances, or low-voltage transformer-supplied appliances.
- Install in accordance with all national and local electrical codes.
- When no "grounding means" exists in wallbox, the 2011 National Electrical Code (NEC) allows a control to be installed as a replacement if 1) a nonmetallic, noncombustible faceplate is used with non-metallic attachment screws or 2) the circuit is protected by a ground fault circuit interrupter (GFCI). When installing a control according to these methods, cap or remove green wire before screwing control into wallbox and use an appropriate faceplate such as Claro or Satin Colors series wallplates by Lutron.
- For indoor use only between 32 °F and 104 °F (0 °C and 40 °C).
- Dimmers may feel warm to the touch during normal operation.
- Clean dimmers with a soft damp cloth only. Do not use chemical cleaners.

