

MACL-L3T251B
LED+ Dimmer
120 V~ 60 Hz

How-to videos


lutron.com/dualwiring

Install with confidence

Use included diagrams or visit our website for step-by-step instructions.

lutron.com/mac-l3t251b

Find the right LED


lutron.com/LEDfinder

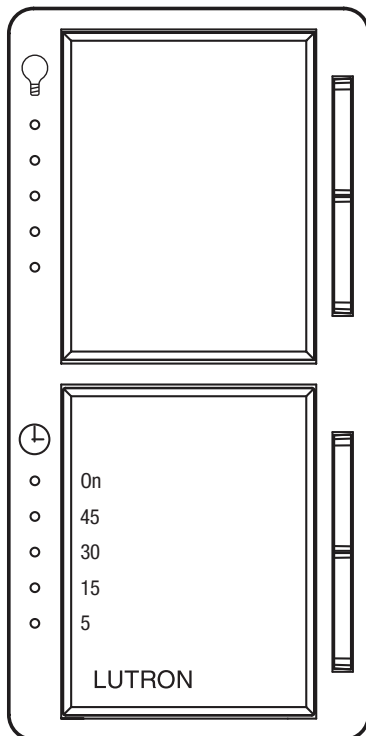
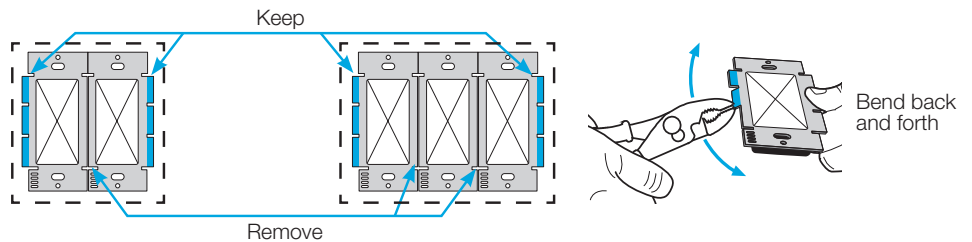
Maximum Load Ratings

Dimmer	65 W LED/CFL 	300 W Incand./Hal.
Timer	2.5 A Fan and/or light 	

Please read before installing

Ganging

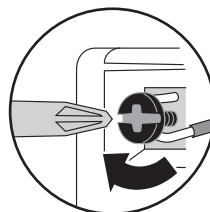
Remove side sections if mounting two or more devices side by side. *No derating is required when ganging this product.*



Important Notes

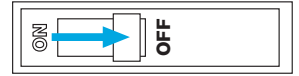
1. Only use the dimmer with permanently installed incandescent or dimmable LED fixtures. To avoid overheating and possible damage to other equipment, do not use to control receptacles, fluorescent lighting fixtures, low-voltage lighting fixtures, magnetic transformer loads, motor-driven appliances, or transformer-supplied appliances.
2. Use the timer to control any permanently installed lighting or fan load. Timer is rated for fan and lighting loads up to 2.5 A.
3. Install in accordance with all national and local electrical codes.
4. When no "grounding means" exists in wallbox, the 2011 National Electrical Code® (NEC®) allows a control to be installed as a replacement if 1) a nonmetallic, noncombustible faceplate is used with non-metallic attachment screws or 2) the circuit is protected by a ground fault circuit interrupter (GFCI). When installing a control according to these methods, cap or remove green wire before screwing control into wallbox and use an appropriate faceplate such as Claro or Satin Colors series wallplates by Lutron.
5. For indoor use only between 32 °F and 104 °F (0 °C and 40 °C), 0-90% relative humidity (non-condensing).
6. For cleaning recommendations, see www.lutron.com/cleaning
7. A load must be connected to the dimmer (red wire) for the product to function.
8. See image below for Lutron's torque guidelines. This only applies to the black screw.

5 in-lbs (0.55 N•m)



12/14 AWG
(2.5–1.5 mm²)

WARNING: SHOCK HAZARD. May result in serious injury or death. Turn off power at circuit breaker or fuse before installing.

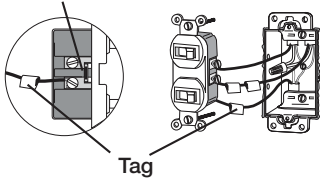


Connect

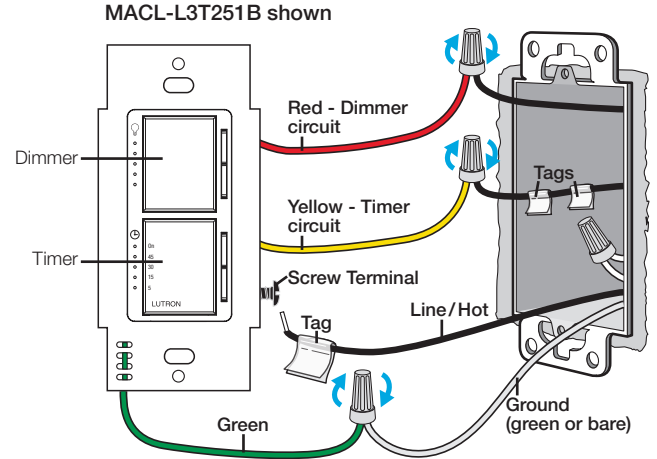
Before Removing the Old Switch:

1. Place a single tag (electrical tape, for example) on the wire that is connected to the Line/Hot side of the switch (the side with the breakoff fin).
2. Place two tags on the wire from the load that you want to connect to the timer or switch.

Identify side with breakoff fin

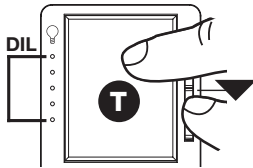


For advanced programming instructions, please see Lutron Application Note #847 (P/N 048847) on www.lutron.com/macL-l3t251b

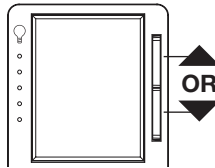


AFTER INSTALLATION: Adjust dimming range (set low-end trim)

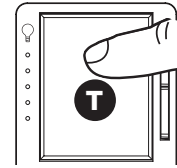
- A** Hold **T** and **▼** until an indicator light (DIL) blinks on the dimmer.



- B** Use **▲** or **▼** to improve lowest dimming level.



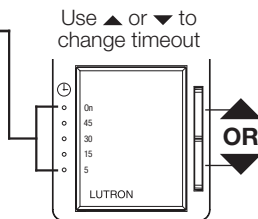
- C** Press **T** to save and exit low-end trim mode.



MACL-L3T251B

Timer Indicator Lights (TILs)

- White TILs indicate timer duration or remaining time in minutes.
- Top TIL labeled **On** has no time limit.
- Bottom TIL blinks rapidly to indicate one minute of time remaining.



Troubleshooting

Symptoms	Probable cause and action
Product does not work and no indicator lights are illuminated	Verify a working load is connected to the dimmer (the red wire must be connected to a working lighting load) Check that power is supplied to the device
Lighting load connected to the dimmer flickers or performs poorly	Verify bulb is on the compatible list (see lutron.com/LEDfinder) Adjust dimming range (see above)

For more troubleshooting tips, please see www.lutron.com/support

Limited Warranty: www.lutron.com/warranty

Lutron, the Lutron logo, Claro, LED+, and Satin Colors are trademarks or registered trademarks of Lutron Electronics Co., Inc., in the U.S. and other countries. All other product names, logos, and brands are property of their respective owners.

Receive an Extended Warranty: www.lutron.com/CLregistration

24 / 7 Support: 1.844.LUTRON1 (USA/Canada) +1.888.235.2910 (Mexico)