

MA-T51MNB

Maestro Timer Switch

120 V~ 50/60 Hz

Maximum load ratings:

- 150 W LED /CFL 
- 450 W MLV 
- 600 W ELV 
- 600 W Incandescent/Halogen 
- 3 A Fan 
- 5 A Fluorescent 

Please visit www.lutron.com/ma-t51mnb for:

- Helpful videos
- Advanced programming and operation
- Additional wiring scenarios
- If you have three or more switches controlling a light

Please read before installing

For lights and/or a fan switched from one location

(For lights and/or a fan switched from two locations, see instructions starting on page 4)

1 Determine wiring type

For lights and/or a fan switched from two locations, see instructions starting on page 4.

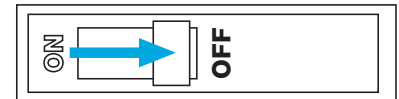
For lights and/or a fan switched from one location, proceed to Step 2 below.

2 Turn power OFF at circuit breaker

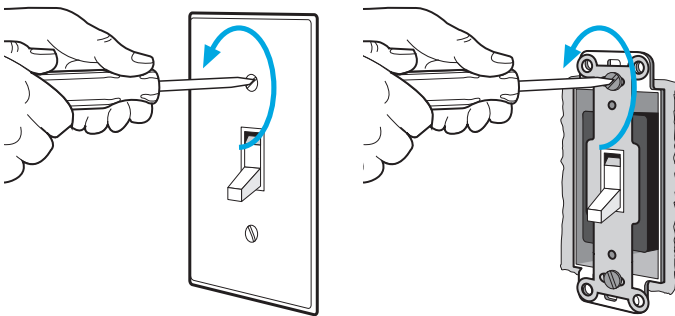


WARNING: SHOCK HAZARD.

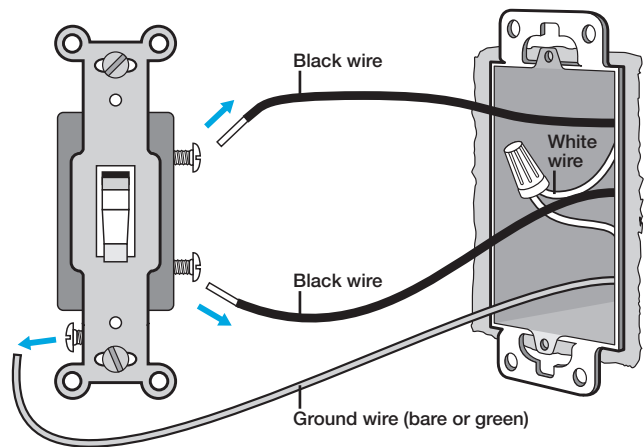
May result in serious injury or death. Turn off power at circuit breaker or fuse before installing.



3 Remove existing device



Disconnect wires.



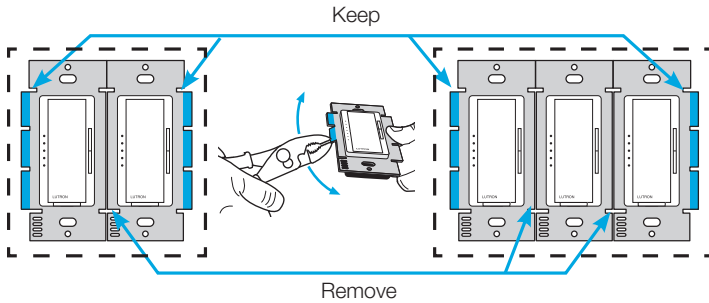
For lights and/or a fan switched from one location *(continued)*

(For lights and/or a fan switched from two locations, see instructions starting on page 4)

4 Remove middle sections (if ganging devices)

Remove middle sections if mounting two or more devices side by side. See Maximum Ratings chart below for the new wattage limits.

NOTE: No derating is required when using only CFLs or LEDs.



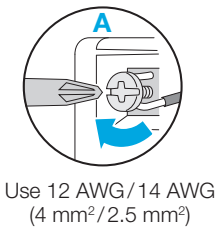
MAXIMUM RATINGS FOR MIXED LOAD TYPES

Load Type	Maximum Load		
	No Sides Removed	1 Side Removed	2 Sides Removed
LED/CFL	1.25 A/ 150 W	1.25 A/ 150 W	1.25 A/ 150 W
Halogen/ Incandescent	600 W	500 W	400 W
Magnetic Low-Voltage*	600 VA/ 450 W	500 VA/ 400 W	400 VA/ 300 W
Electronic Low-Voltage	600 W	500 W	400 W
Fluorescent	5 A	4 A	3 A
General Purpose Fan	3 A	3 A	3 A

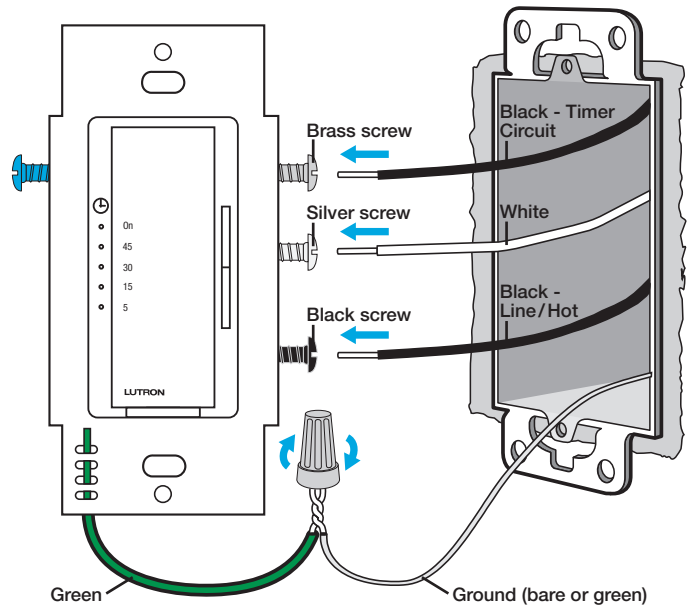
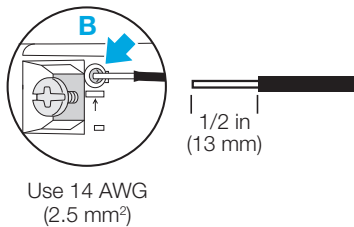
*Note: The maximum lamp wattage is determined by the efficiency of the transformer, with 70–85% as typical. For actual transformer efficiency, contact either the fixture or transformer manufacturer. The total VA rating of the transformer(s) shall not exceed the VA rating of the timer switch.

5 Connect the new timer switch (this product requires a neutral wire!)

Fully wrap the wires around the screw and tighten (A), or strip insulated wires to 1/2 in (13 mm) and insert into the push-in terminals (B).



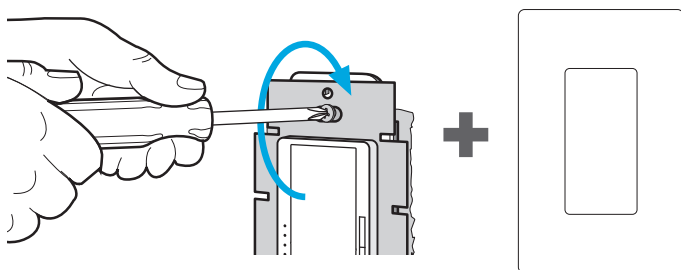
OR



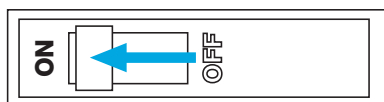
For lights and/or a fan switched from one location *(continued)*

(For lights and/or a fan switched from two locations, see instructions starting on page 4)

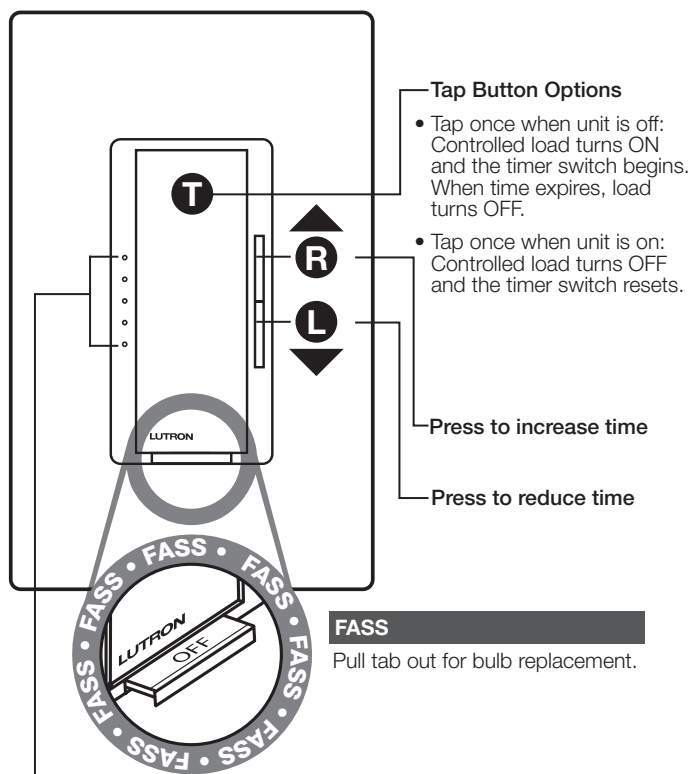
6 Mount the timer switch using the provided screws



7 Turn power ON at circuit breaker



OPERATION



Timer Indicator Lights (TILs)

- White TILs indicate the timer switch duration or the remaining time in minutes.
- The top TIL labeled ON has no time limit.
- The bottom TIL blinks rapidly to indicate 1 minute of time remaining (TILs are not available on the accessory switch).

IMPORTANT

1. CAUTION: To avoid overheating and possible damage to other equipment, do not use to control receptacles.
2. Install in accordance with all national and local electrical codes.
3. Grounding: When no "grounding means" exists in wallbox, the 2011 National Electrical Code® (NEC®) allows a control to be installed as a replacement if 1) a non-metallic, noncombustible faceplate is used with non-metallic attachment screws or 2) the circuit is protected by a ground fault circuit interrupter (GFCI). When installing a control according to these methods, cap or remove green wire before screwing control into wallbox.
4. Maestro timer switches are not compatible with standard 3-way/4-way switches. For use only with Maestro accessory switches (MA-AS, MSC-AS).
5. Maestro accessory switches (MA-AS, MSC-AS) cannot be used individually and must be used in conjunction with a Maestro timer switch in a 3-way/4-way application.
6. In any 3-way/4-way circuit use only one timer switch (must be on the load side) with up to 9 accessory switches (MA-AS, MSC-AS).
7. Operate between 32 °F and 104 °F (0 °C and 40 °C), 0-90% relative humidity non-condensing.
8. Protect control from dust and dirt when painting or spackling.
9. Timer switch may feel warm to the touch during normal operation.
10. Recommended wallbox depth is 2.25 in (57 mm) minimum.
11. Maximum wire length between the timer switch and the farthest accessory switch (MA-AS, MSC-AS) is 250 ft (76 m).
12. For safety reasons, do not use the timer switch to control fixtures that are the only source of illumination for an area.
13. For cleaning recommendations, see www.lutron.com/cleaning

For lights and/or a fan switched from two locations

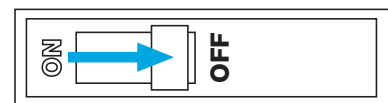
(For lights and/or a fan switched from three or more locations, please visit www.lutron.com/ma-t51mnb)

1 Turn power OFF at circuit breaker

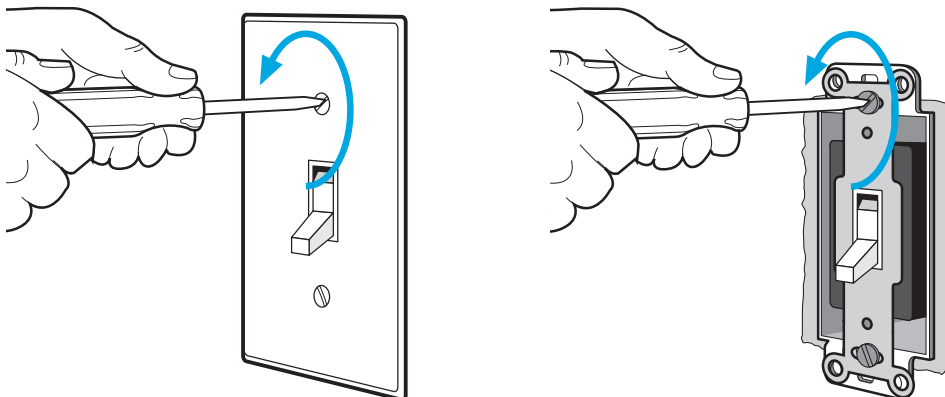


WARNING: SHOCK HAZARD.

May result in serious injury or death. Turn off power at circuit breaker or fuse before installing.



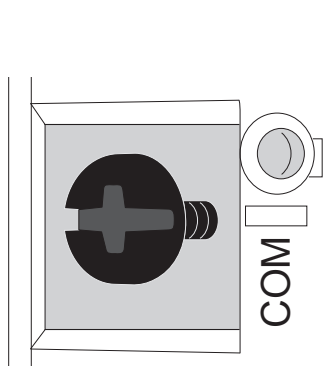
2 Remove (but do not disconnect) existing devices



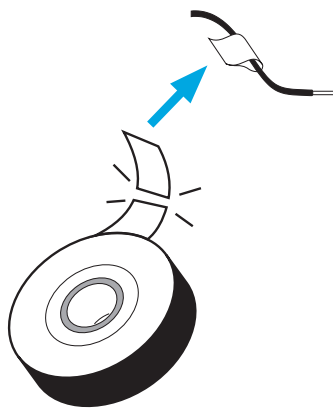
3 Mark wire on the COMMON terminal

On both existing devices, mark the wire (for example, using electrical tape) that is connected to the screw that is a different color (typically black) than all the others. This screw terminal may also be labeled "COMMON" or "COM".

Does not include the ground screw.



Rear/side view of existing device



4 Disconnect wires

5 Remove middle sections (if ganging devices)

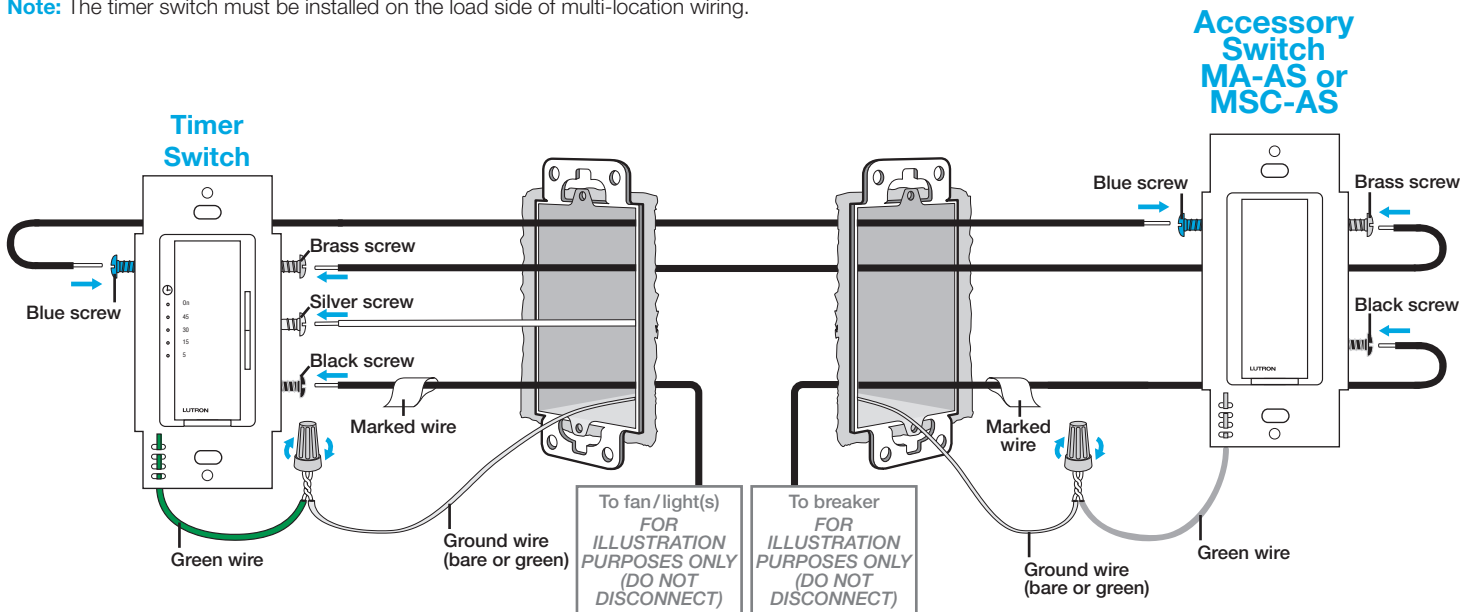
See Step 4 on page 2 for details.

For lights and/or a fan switched from two locations *(continued)*

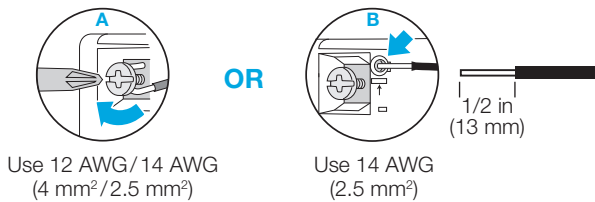
(For lights and/or a fan switched from three or more locations, please visit www.lutron.com/ma-t51mnb)

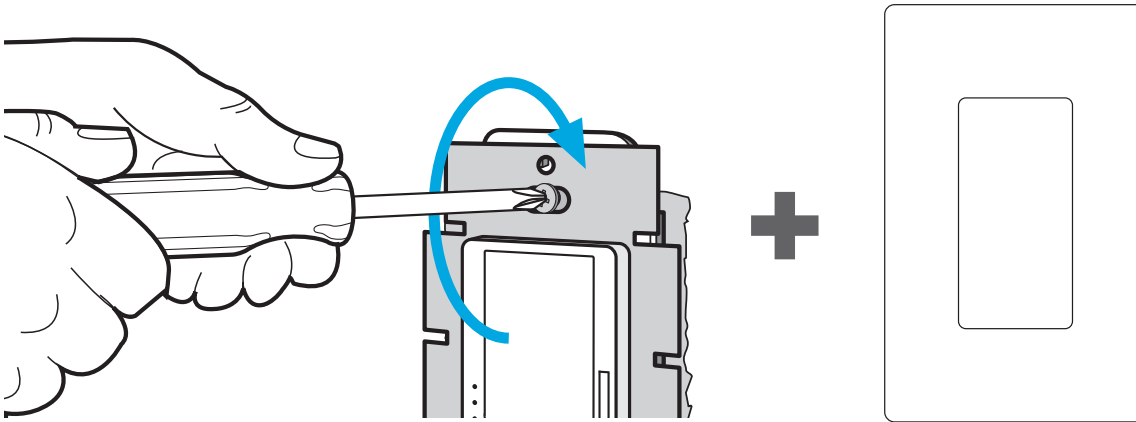
6 Connect the new timer switch and a Maestro accessory switch (MA-AS or MSC-AS)

Note: The timer switch must be installed on the load side of multi-location wiring.



Fully wrap the wires around the screw and tighten (A), or strip insulated wires to 1/2 in (13 mm) and insert into the push-in terminals (B).



For lights and/or a fan switched from two locations *(continued)*(For lights and/or a fan switched from three or more locations, please visit www.lutron.com/ma-t51mnb)**7** Mount all devices using the provided screws**8** Turn power ON at circuit breaker**Troubleshooting**

Symptom	Possible Cause
Load does not turn ON, but LED on timer switch is ON.	<ul style="list-style-type: none"> • Light bulbs are burned out. • Timer switch is not properly wired. • Neutral wire is not connected. • Load not properly installed. • Fan not turned on at fixture.
Load does not turn ON and LED on timer switch is OFF.	<ul style="list-style-type: none"> • Timer switch is not properly wired, wires connected to brass and black screw terminals may be reversed. • Neutral wire is not connected. • Front Accessible Service Switch (FASS) on timer switch or any accessory switch is pulled out to the OFF position. • Breaker is OFF or tripped.
Load turns ON and timer switch works, but accessory switch does not work.	<ul style="list-style-type: none"> • Wire connected to the blue screw terminal on timer switch is not the same wire connected to the blue screw terminal on accessory switch. • Timer switch is not installed on the load side of the circuit.
Load does not remain ON, LED glows dimly or blinks.	<ul style="list-style-type: none"> • Blue screw terminal miswired to neutral wire or touching ground.

HelpU.S.A. | Canada | Caribbean **1.844.LUTRON1 (588.7661)**Mexico **+1.888.235.2910**Others **+1.610.282.3800****Limited Warranty:** www.lutron.com/TechnicalDocumentLibrary/369-119_Wallbox_Warranty.pdf

Lutron, the Lutron logo, and Maestro are trademarks or registered trademarks of Lutron Electronics Co. Inc., in the U.S. and/or other countries.

All other product names, logos, and brands are property of their respective owners.