


DIVA

quick-start guide

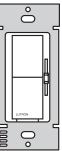
Dimmer  P/N 0302209 REV A

Diva Dimmer with Night Mode
DVCLN-153P
120 V~ 50/60 Hz

Installation videos can be found here:
www.lutron.com/wiringwizard

Contents supplied

Dimmer (DVCLN-153P)



Jumper Wire



Wire connectors (5)



Screws (2)



Tools you'll need

Flat-head screwdriver



Phillips-head screwdriver



Important notes:

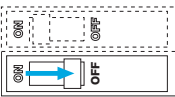
1. For indoor use only.
2. Operate between 32 °F (0 °C) and 104 °F (40 °C).



Installing your dimmer

Installation for lights with one wall switch (single pole)

1 Turn power off at circuit breaker!



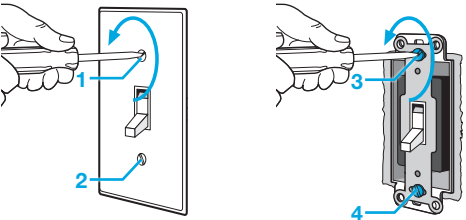
WARNING: SHOCK HAZARD! May result in Serious Injury or Death. Turn off power at circuit breaker or fuse before installing.

Important note:

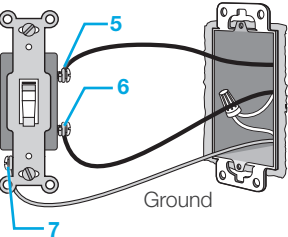
We've included instructions for when a single switch is controlling the lights. For installation instructions when two or more switches are controlling a light, please visit www.lutron.com/wiringwizard for complete installation instructions and how-to videos.

2 Remove existing switch from wall

Remove the wallplate from the switch. Remove the switch and pull it away from the wall.



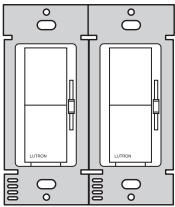
Disconnect all three wires* from the switch.



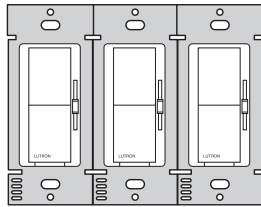
* If your switch has more than 3 wires attached, please visit www.lutron.com/wiringwizard

3 Ganging and derating

Double Gang



Triple Gang



Important note:

Multi-gang installations may reduce the dimmer's maximum wattage rating. See the chart below for maximum wattage information.

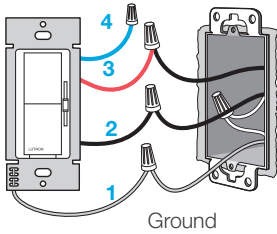
Maximum* wattage derating chart (120 V~ 50/60 Hz)

Load Type	Single gang	Double gang	Triple gang
LED	150 W	150 W	150 W
or*			
Incandescent & Halogen	600 W	500 W	400 W

Mixed Load Derating Chart

Total LED Wattage Installed (wattage per bulb x number of bulbs)	Maximum Allowable Incandescent/Halogen Wattage		
	Not Ganged	End of Gang	Middle of Gang
0 W	+ 600 W	500 W	400 W
1 W - 25 W	+ 500 W	400 W	300 W
26 W - 50 W	+ 400 W	300 W	200 W
51 W - 75 W	+ 300 W	200 W	100 W
76 W - 100 W	+ 200 W	100 W	50 W
101 W - 125 W	+ 100 W	50 W	0 W
126 W - 150 W	+ 0 W	0 W	0 W

4 Connect the dimmer

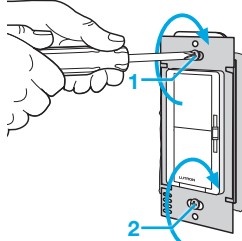


- 1 Connect the bare copper (or green) "ground" wire from the wallbox to the green wire on the dimmer using one of the large supplied wire connectors.
- 2 Connect either of the remaining wires from the wallbox to the black wire on the dimmer using one of the large supplied wire connectors.
- 3 Connect the remaining wire from the wallbox to the red wire on the dimmer using one of the large supplied wire connectors.
- 4 Cap the blue wire coming from the dimmer with the small supplied wire connector. The blue wire is not used for single pole installations.

Note: Wire colors depicted in this install guide may not match what is in your walls.

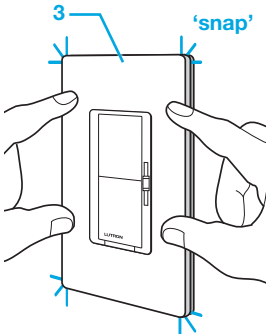
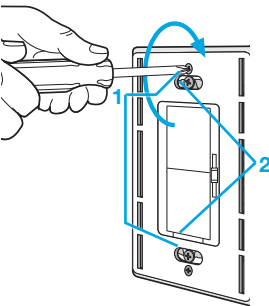
5 Mount the dimmer

Use the mounting screws provided, leaving them loose for this step.

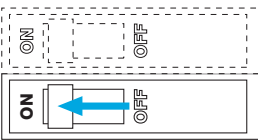


6 Attach the wallplate

- 1 Attach the adapter to the dimmer using the screws provided.
- 2 Tighten the mounting screws on the dimmer.
- 3 Snap on the wallplate.



7 Turn power on at circuit breaker



continued on the next page...

Works with energy efficient dimmable light bulbs:

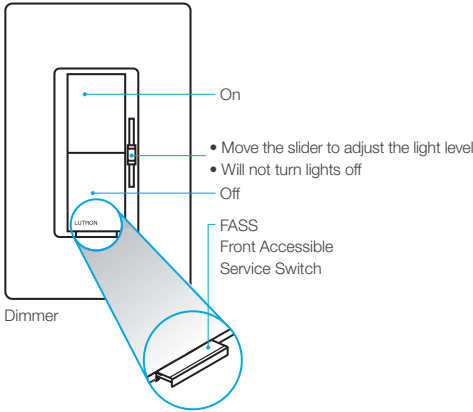
-  **LED**—up to 150 W
-  **Halogen**—up to 600 W
-  **Incandescent**—up to 600 W

NOTE: You can mix and match dimmable LEDs, as well as halogen and incandescent light bulbs, with Lutron dimmers.

Dimmable LED light bulbs vary in their dimming performance. If you’re using these bulbs and they flicker or turn off, see Step 9 **Adjusting low-end trim** for information on adjusting the dimmer for best bulb performance.

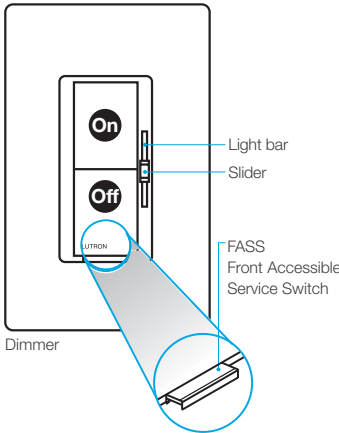
For a complete list of compatible dimmable LEDs, please visit www.lutron.com/LEDfinder

8 Using your controls



Replacing light bulbs using Front Accessible Service Switch (FASS)
Pull the FASS out on the dimmer to remove power at the light socket.

9 Adjusting low-end trim





1. Pull the Front Accessible Service Switch (FASS) out to the open position.
2. Press and HOLD the **Off** button.
3. Continue to HOLD the **Off** button and push the FASS in until the light bar flashes (after about 6 seconds).
4. Release the **Off** button and move the slider until it stops at the bottom.
5. Slowly move the slider up until all of the light bulbs on the circuit just barely turn on.
6. Press **Off** to save settings.


10 Night mode ambient light setting

Night Mode - Rises to ON and fades to OFF more gently when it's dark than during the day.

1. Pull the Front Accessible Service Switch (FASS) out to the open position.
2. Press and HOLD the **On** button.
3. Continue to HOLD the **On** button and push the FASS in until the light bar flashes (after about 6 seconds), indicating the current selection.
4. Move the slider up or down to select the desired Night Mode setting.

 Top Slider Position (**HIGH**):
Brighter light needed to exit Night Mode
Ideal for rooms with lots of natural light

 Middle Slider Position (**MEDIUM**):
Moderate light needed to exit Night Mode
Ideal for rooms with natural light

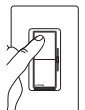
 Bottom Slider Position (**LOW**) default setting:
Very little light needed to exit Night Mode
Ideal for rooms without natural light


5. Press **On** to **save** settings or Press **Off** to **disable** Night Mode.
6. Light bar will display saved setting and return to normal mode in a few seconds.


11 Restore Factory Settings

 Tap 3x and HOLD

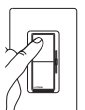
Tap the **On** button quickly at least 3x, holding on the last press.

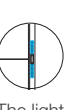
 HOLD


 3 sec. until

 Light flashes quickly

Continue to hold the **On** button until the light begins to flash quickly.

 Tap 3x

 The light bar starts flashing

 Light flashes slowly 3x, then OFF

Release the button, then immediately tap the **On** button 3x and release.

All settings returned to factory settings.

Troubleshooting

Symptoms	Probable cause and action
Light does not turn on or the dimmer light bar does not light up.	<ul style="list-style-type: none">• Light bulb(s) burned out.• Breaker is Off or tripped.• Light not properly installed.• Wiring error.• FASS switch on the dimmer is in the open position.
Bulbs turn off while being dimmed.	Verify bulbs are marked dimmable and see Step 9 Adjusting low-end trim for information on adjusting the dimmer for best bulb performance.
Bulbs turn on at high light level but do not turn on at a low light level.	
Bulbs flicker or flash when dimmed to a low light level.	
Load is Off and the light bar blinks 4 times, pauses, and repeats.	The dimmer is in Over Temperature Protection (OTP) mode. <ul style="list-style-type: none">• See Step 3 Ganging and Derating. Ensure the dimmer is not overloaded.• Reset the dimmer by using the Front Accessible Service Switch (FASS); See Step 8 Using your Controls section. Pull out the FASS and push it back in.
Lights fade slowly during the day.	Not enough light in room to exit Night Mode. Adjust Night Mode ambient setting to Low or Disable .
Lights fade quickly during the night.	Too much light in room to enter Night Mode. Adjust Night Mode ambient setting to Medium or High .
There is a 1-2 second delay prior to the light turning on.	Low-end trim is not set or set too low for the lamp to turn on. Increase low-end trim by seeing Step 9 of this document.

Go to www.lutron.com/support for additional troubleshooting suggestions.

CAUTION

Use only with permanently installed fixtures with dimmable LED, halogen, or incandescent lamps. To avoid overheating and possible damage to other equipment, do not use to control receptacles, motor-driven appliances, or transformer-supplied appliances.

Codes

Install in accordance with all national and local electrical codes.

Grounding

When no “grounding means” exist in wallbox, the National Electrical Code (NEC®) allows a control to be installed as a replacement if 1) a nonmetallic, noncombustible faceplate is used with nonmetallic attachment screws or 2) the circuit is protected by a ground fault circuit interrupter (GFCI). When installing a control according to these methods, cap or remove green wire before screwing control into wallbox.

FCC/IC Information

This device complies with part 15 of the FCC Rules and Industry Canada license-exempt RSS standard(s). Operation is subject to the following two conditions: (1) This device may not cause interference, and (2) this device must accept any interference, including interference that may cause undesired operation. Modifications not expressly approved by Lutron Electronics Co., Inc. could void the user's authority to operate this equipment.

Note: This equipment has been tested and found to comply with the limits for a Class B digital device, pursuant to part 15 of the FCC Rules. These limits are designed to provide reasonable protection against harmful interference in a residential installation. This equipment generates, uses and can radiate radio frequency energy and, if not installed and used in accordance with the instructions, may cause harmful interference to radio communications. However, there is no guarantee that interference will not occur in a particular installation. If this equipment does cause harmful interference to radio or television reception, which can be determined by turning the equipment off and on, the user is encouraged to try to correct the interference by one or more of the following measures:

- Reorient or relocate the receiving antenna.
- Increase the separation between the equipment and receiver.
- Connect the equipment into an outlet on a circuit different from that to which the receiver is connected.
- Consult the dealer or an experienced radio/TV technician for help.

Warranty

For warranty information, please visit www.lutron.com/warranty

Lutron, Diva, and any related trade dress and logos are trademarks or registered trademarks of Lutron Electronics Co., Inc. in the US and/or other countries.

All other product names, logos, and brands are property of their respective owners.