

Dynamic Keypads
 24 V $\overline{\text{DC}}$ 113 mA
 IEC PELV / NEC Class 2
 Typical Power Consumption*: 1.5 W

Installation Instructions

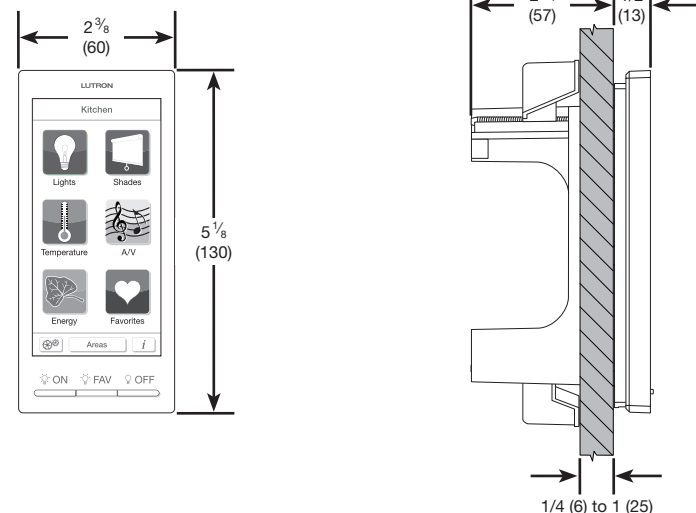
Please Read Before Installing

HQ-J-DK420 (434 MHz)
 HQ-W-DK420

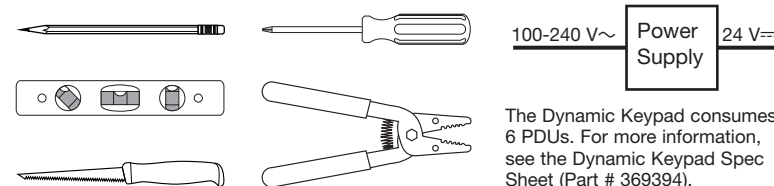
HQ-J-DK420-DEMOW (Nonfunctional Demo)
 HQ-J-DK420-DEMOB (Nonfunctional Demo)

Included in box

Measurements shown as: in (mm)



Required for Installation (Not Included)



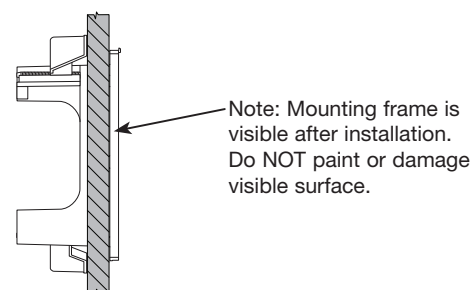
Important Notes

Environment: Ambient operating temperature: 32 °F to 104 °F (0 °C to 40 °C), 0 to 90% humidity, non-condensing. Indoor use only.

Cleaning: To clean, wipe with a clean damp cloth. DO NOT use any chemical cleaning solutions or compressed air.

RF Device Placement: RF devices must be located within 30 ft (9 m) of an RF signal repeater.

Mounting frame: A custom mounting frame is included with the Dynamic Keypad. Only use the screws provided with the mounting frame.



*Typical Power Consumption test conditions: LCD backlight on at 80%, buttons backlight on at 28%, while in use.

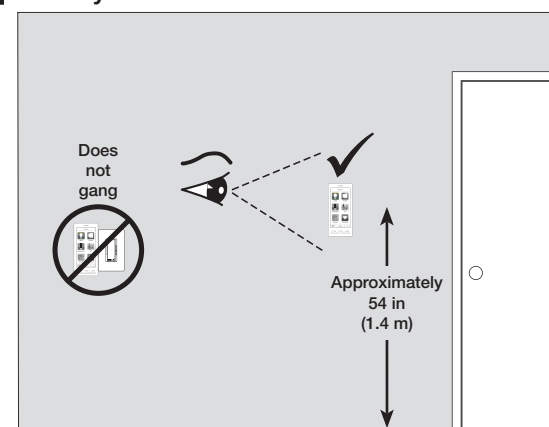
Technical Assistance:

U.S.A./Canada: 1.800.523.9466
 Mexico: +1.888.235.2910
 Brazil: +55 11 3257 6745
 United Kingdom: +44.(0)20.7680.4481
 India: +91.124.471.1900

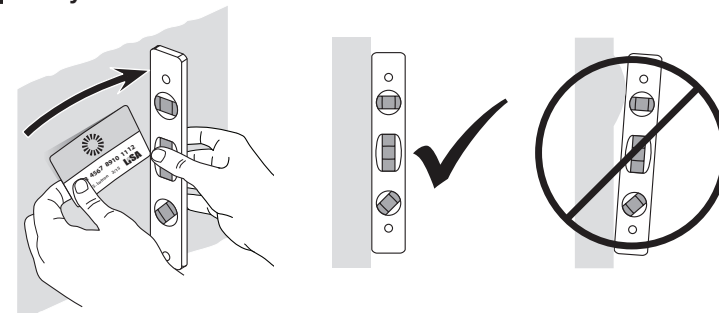
United Arab Emirates:
 +971.4.299.1224
 China: 10.800.120.1536
 Singapore: 800.120.4491
 Other Countries: +1.610.282.3800

Installation

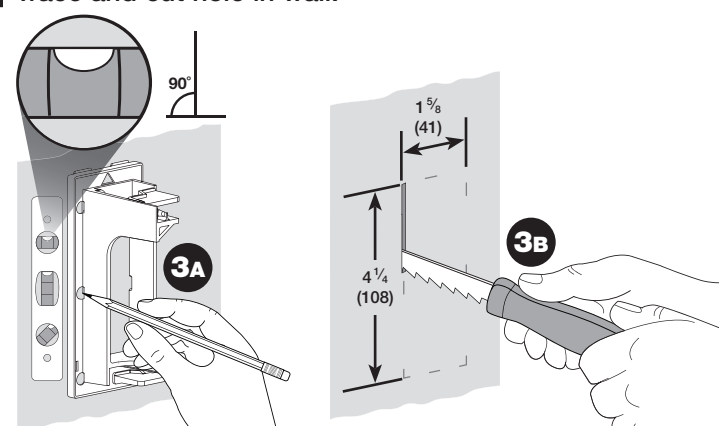
1 Identify installation location.



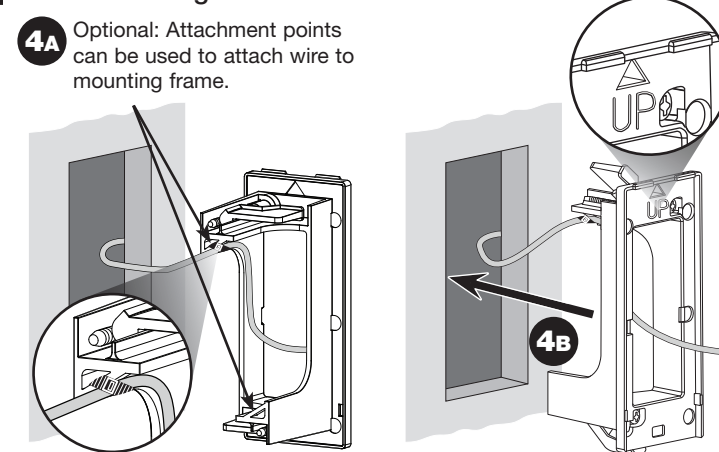
2 Verify wall is flat.



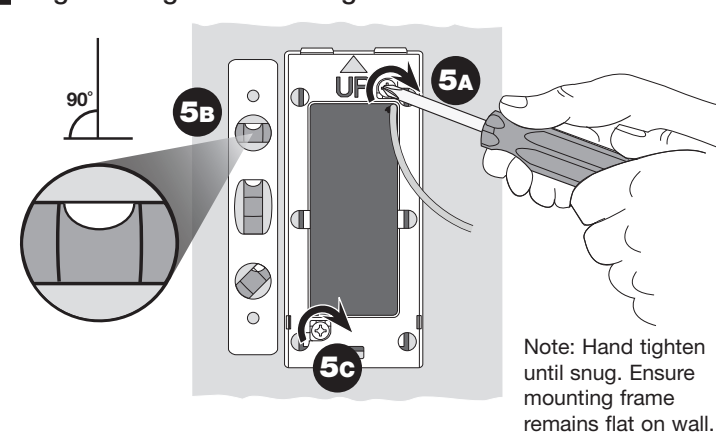
3 Trace and cut hole in wall.



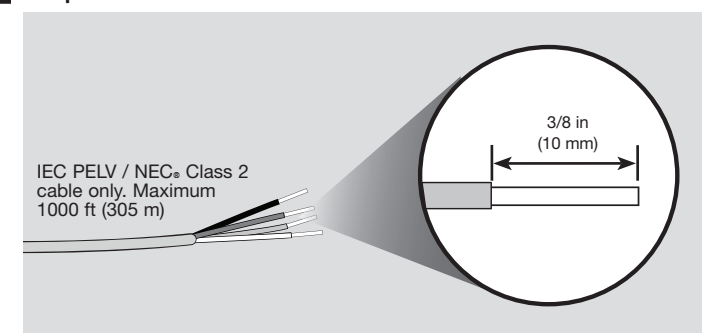
4 Insert mounting frame into wall.



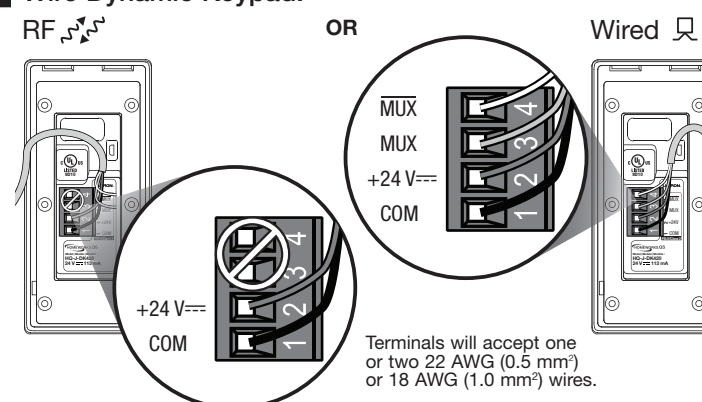
5 Align and tighten mounting frame.



6 Strip wire ends.

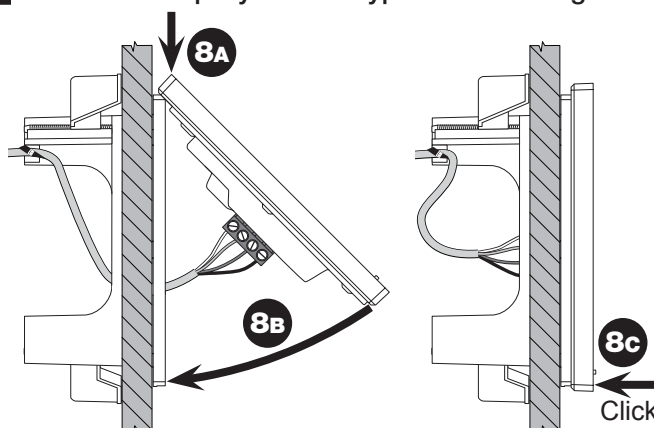


7 Wire Dynamic Keypad.



Note: Do NOT connect to line/mains voltage.

8 Hook and snap Dynamic Keypad to mounting frame.



Troubleshooting Guide

Symptom	Probable Cause and Action
Backlight does not turn on when screen is touched. Nothing is displayed on the screen.	<ul style="list-style-type: none"> Power not present at Keypad Circuit breaker OFF. Turn ON breaker.
Blue Lutron ® screen with "Maintenance" or "Startup failure" at the bottom.	<ul style="list-style-type: none"> Incorrect wiring. Wire the Keypad according to the Installation section.
Dimmer, switch or shade/drapery not controlled by a Keypad or does not go to desired level when a button on a Keypad is pressed.	<ul style="list-style-type: none"> Startup failure. Cycle power to the device. If symptom persists, contact Lutron Technical Support.
The dimmer, switch or shade/drapery is not assigned to Keypad or the device is 'unaffected.'	<ul style="list-style-type: none"> Program the device using the HomeWorks® QS software.
The lamps are burned out.	<ul style="list-style-type: none"> Replace the lamps.
There is no power to the device.	<ul style="list-style-type: none"> Ensure that the device is powered.
The Dynamic Keypad does not enter addressing mode. (RF version only HQ-J-DK420-XX)	<ul style="list-style-type: none"> The Dynamic Keypad is not configured for RF communication. Use the information screen on the Dynamic Keypad to verify that it is configured for RF communication. Ensure MUX (pin 3) and $\overline{\text{MUX}}$ (pin 4) are not connected. If these pins are connected, disconnect them and follow steps in Returning Dynamic Keypads to Factory Settings.
The Dynamic Keypad does not snap onto the mounting frame as indicated in step 8c.	<ul style="list-style-type: none"> The mounting frame screws may be too tight (Step 5). Remove the Dynamic Keypad, loosen the mounting frame screws and repeat step 8.

Returning Dynamic Keypads to Factory Settings

Returning Dynamic Keypads to Factory Settings will remove them from the system and erase all programming.

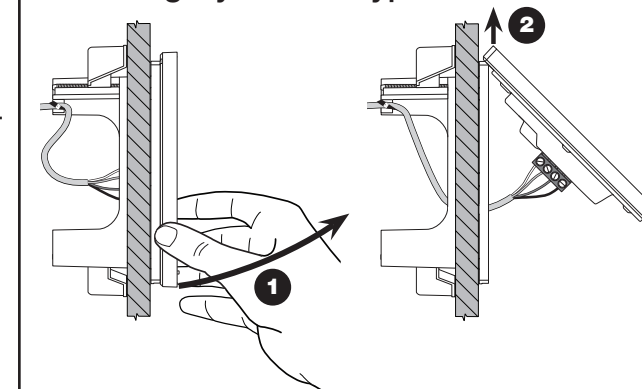
Step 1: Triple tap any button, below the screen, on the Dynamic Keypad. DO NOT release after third tap.

Step 2: Keep the button pressed on the third tap until all the buttons start to flash slowly (approximately 3 seconds).

Step 3: Immediately release the button and triple tap the button again. The buttons on the Dynamic Keypad will flash quickly.

The Dynamic Keypad has now been returned to Factory Settings. The Dynamic Keypad will restart and the buttons will stop flashing.

Removing Dynamic Keypads



Warranty: For warranty information, please see the Warranty enclosed with the product, or visit www.lutron.com/TechnicalDocumentLibrary/HomeWorks_Warranty.pdf