

Installation Instructions  
Please Read Before Installing

P/N 043428  
Rev. A

Important Notes

**Codes:** All wiring must be installed in accordance with all local and national electrical codes.

**Cooling:** This equipment is air-cooled. Mount in a place where the vented cover will not be blocked. Clearance of 304 mm (12 in) is required in front of the unit.

**Environment:** This equipment is intended for indoor use only; in a 0 °C to 40 °C (32 °F to 104 °F) setting with a relative humidity less than 90%, non-condensing. Supplemental door is required if LQSE-4A-D module is used and calibration point exceeds 70 °C (158 °F).

**Mounting Location:** Modules will hum slightly and internal relays will click while in use. Mount in a location where such noise is acceptable.

Mount panel so that line voltage wiring will be at least 1.8 m (6 ft) from audio or electronic equipment and its wiring.

Installation

1. **Mount Rough-In Panel** using one of the following methods (mounting hardware is not provided):

- a. **Surface Mount:** Use keyholes with bolts sufficient for 50 kg (110 lb) load, M6 (6.35 mm [0.25 in]) bolts recommended.
- b. **Recess Mount:** Use screws sufficient for 50 kg (110 lb) through the corners of the panel. Mount panel flush to or not more than 3 mm (0.125 in) below the finished wall surface. Panel is 105 mm (4.125 in) deep past cover mounting holes.

2. **Run power wiring into panel**



**WARNING: Shock Hazard.** May result in serious injury or death. More than one disconnect may be required to de-energize this device. Disconnect all power sources before servicing unit.

Locations to run power wiring into the panel are shown in **Figure 2**.

For breaker and RCBO panels, run power feed to mains isolator (ISO) switch. All module and control feed wiring is pre-wired.

For feed-thru panels dress wires to the left side of the terminal blocks (modules will be to the right of the terminal blocks as shown in **Figure 2**). Power supply feed wiring will draw a maximum of 0.7 A. Lutron recommends that a dedicated feed be used for this purpose. Leave this circuit breaker off until the processor is installed.

For increased system reliability, HomeWorks<sup>®</sup> processors can be powered by an uninterruptible power supply (UPS) that incorporates overvoltage protection, brown-out protection, and battery backup. When selecting a UPS, allow 240 VA of capacity for each processor on the UPS. A single large UPS for all processors is better than an individual UPS for each processor. This prevents inconsistent system operation on battery backup if the individual UPS units power down at different times.

3. **Install load wiring.**

Each module controls up to 4 loads. Wiring for LQSE-4A-D, and LQSE-4S10-D modules is shown in **Figures 3A** and **3B**. (Wiring for modules, LQSE-4T10-D, LQSE-4M-D, LQSE-2ECO-D, and LQSE-2DAL-D will differ. Refer to the installation instructions packaged with the terminal blocks.)

Label each wire clearly as you wire it to the terminal blocks.

**NOTE:** Refer to module install sheet for maximum ratings. Exceeding the maximum can damage the module.

**NOTE:** If using an LQSE-4T10-D, LQSE-4M-D, LQSE-2ECO-D, or LQSE-2DAL-D module, tie off the load wiring with a wire connector rather than terminating it to the terminal blocks. New replacement terminal blocks are required, and sold separately, for these modules.

4. **Test all load wiring.** Turn on input power to the module locations. Check all connected lighting to ensure it is on. If a circuit breaker trips, a wiring error exists and must be resolved. The pre-installed bypass jumpers will distribute power to each load and must not be removed until after all loads are fully tested and all modules are installed.

5. **Install Modules.** Turn off power to the panel. Install modules on the DIN rails to the right of the terminal blocks as shown in **Figure 2**. Follow terminal block kit and module installation instructions for terminal block arrangement and wiring.

6. **Bypass Jumper removal.** Remove the bypass jumpers with the tool provided as shown in **Figure 3C**.

7. **Manual Override.** Remove the contact closure jumper that ships installed in the modules. Wire the modules in parallel and connect to the manual override switch at the bottom of the panel.

8. **Install DIN mounted filler clips.** If using DIN mounted filler clips, place filler clips to the left of the module as shown in **Figure 2**. Each module opening is 14.5 DIN wide. Use the appropriate amount of clips to fill the opening.

9. **Install cover.** Tighten cover screws to 2.3 N•m (20 in-lb)

10. **Install blanking plates.** If there are unused module locations, install blanking plate(s) by fastening to the cover using provided screws. Tighten screws to 1.9 N•m (17 in-lb).

11. **Install cover mounted filler clips.** If using cover mounted filler clips, snap filler clips into front cover to the left of the modules. Each module opening is 14.5 DIN wide. Use the appropriate amount of clips to fill the opening.

12. **If there are remaining products to be installed, leave this instruction sheet in a safe, accessible location.**

Figure 1:

All measurements shown as: mm (in)

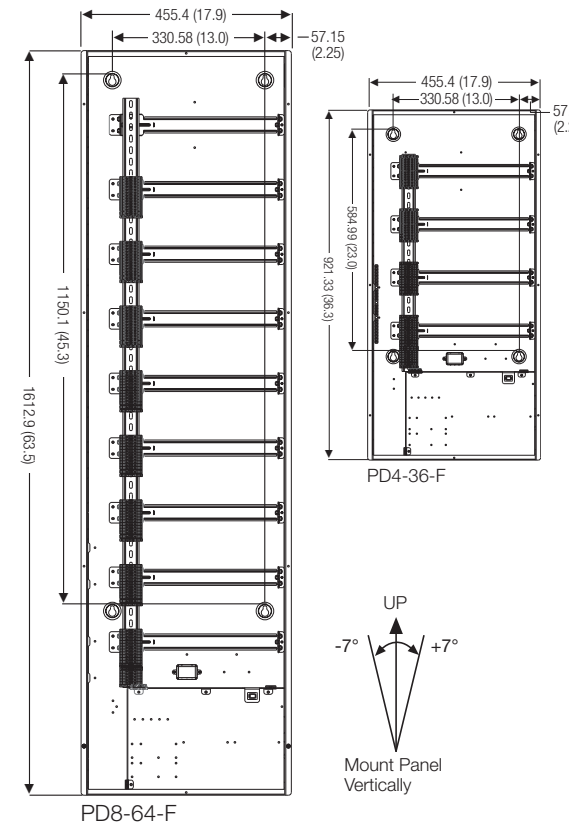
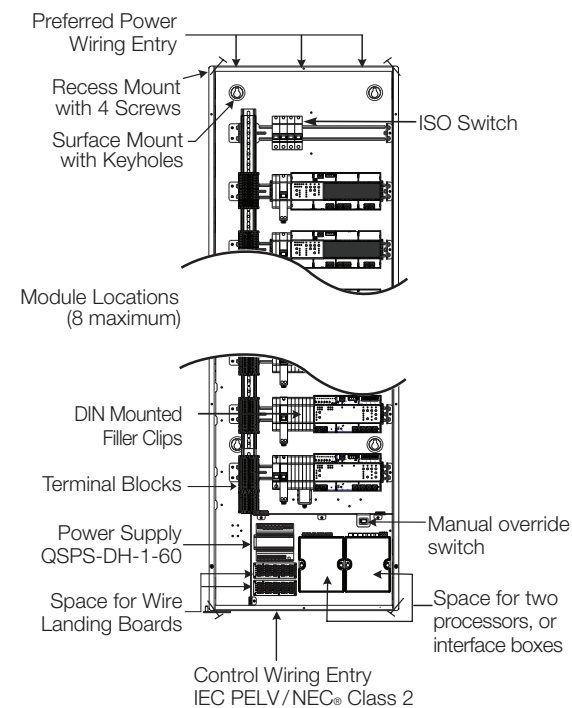


Figure 2: Wire Entry and Panel Mounting<sup>1</sup>



<sup>1</sup>Components sold separately

**Warranty:** For warranty information, please see the warranty enclosed with the product, or visit: [www.lutron.com/TechnicalDocumentLibrary/Intl\\_Warranty.pdf](http://www.lutron.com/TechnicalDocumentLibrary/Intl_Warranty.pdf)

Figure 3A: Breaker and Feed-through Panel Module Wiring (LQSE-4A-D, LQSE-4S10-D, only)

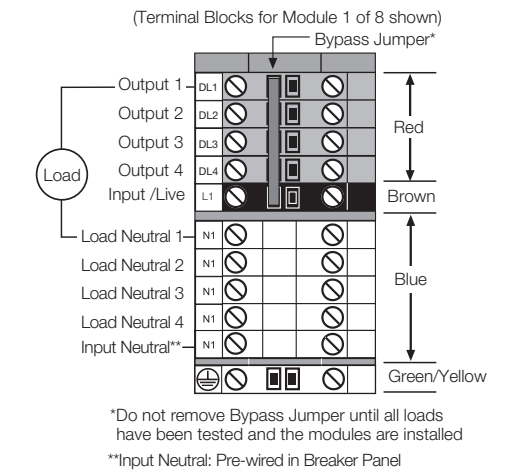


Figure 3B: RCBO Panel Module Wiring (LQSE-4A-D, LQSE-4S10-D, only)

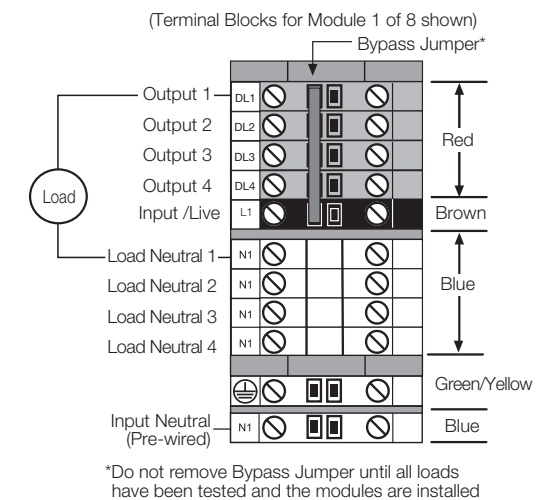


Figure 3C: Remove Bypass Jumpers

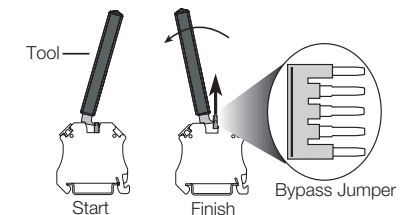
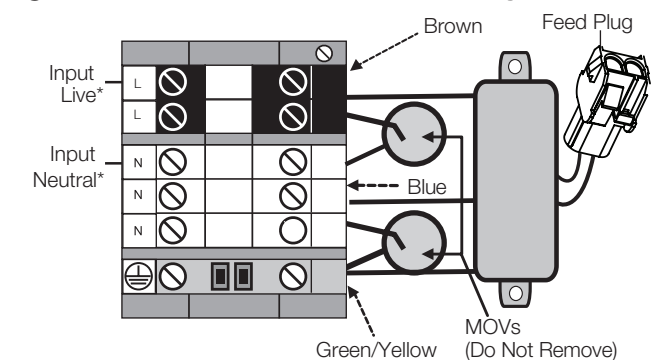


Figure 4: Dedicated Control Assembly Feed



\*Pre-wired in Breaker and RCBO Panel

**NOTE:** One feed plug is included for use with QSPS-DH-1-60.