

# RadioRA3

Standard Keypad

044409 Rev A  
10/2024

Please read before installing.

English

RRE-WSS-1

RR-WS

220 – 240 V~ 50/60 Hz 1 mA

Included Components

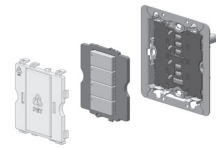
Bulk Keypad

Button Kit\*

Construction Cover

Mounting Screws

\*For RR-WS only



## Help

**RA3 Support Center**  
For additional support with  
installing, programming,  
and troubleshooting



[lutron.com/RA3support](http://lutron.com/RA3support)

Europe: +44.(0)20.7702.0657

Indonesia: +001.803.011.3994

KSA: +140.025.05512

Singapore: +800.120.4491

Thailand: +001.800.120.665853

UAE: +800.031.10102

India: +000800.050.1992

U.S.A./Canada: 1.844.LUTRON1

Mexico: +1.888.235.2910

Other Countries (toll): +971600521581

Fax: +1.610.282.6311

[www.lutron.com/support](http://www.lutron.com/support)

Limited Warranty:

[https://assets.lutron.com/a/documents/intl\\_warranty.pdf](https://assets.lutron.com/a/documents/intl_warranty.pdf)



Hereby, Lutron Electronics Co., Inc. declares that the radio equipment type RRE-WSS-1 and RR-WS are in compliance with Directive 2014/53/EU

The full text of the EU declaration of conformity is available at the following internet address: [lutron.com/cedoc](http://lutron.com/cedoc)

Lutron, the Lutron logo, and RadioRA 3 are trademarks or registered trademarks of Lutron Electronics Co., Inc. in the US and/or other countries.

All other product names, logos, and brands are property of their respective owners.

©2024 Lutron Electronics Co., Inc.



## 1 Turn OFF power at circuit breaker or remove fuse

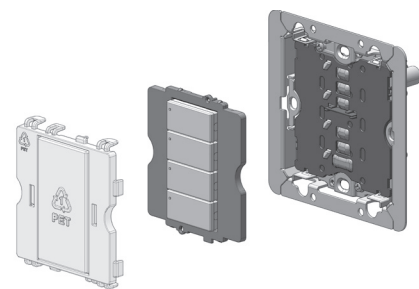


**WARNING: SHOCK HAZARD.**

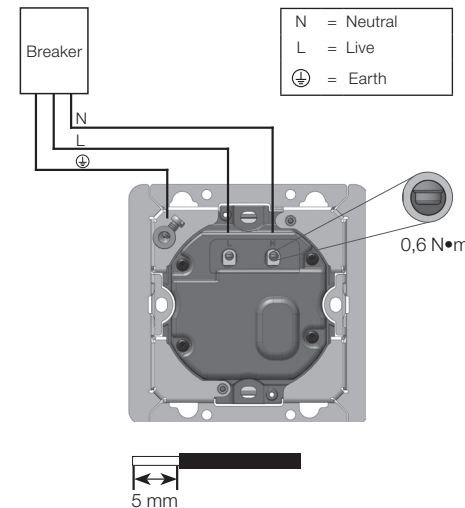
May result in serious injury or death. Always isolate the mains power supply or remove fuse before servicing or installing.

## 2 Wiring

Remove the construction cover, button kit\*, and set aside. Connect the wires using the diagram on the right.

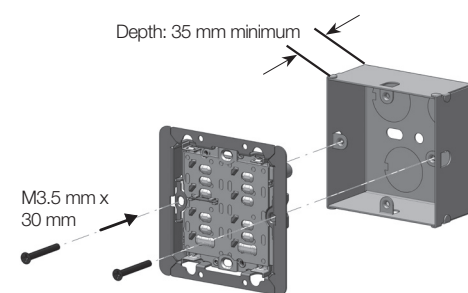


\*For RR-WS only

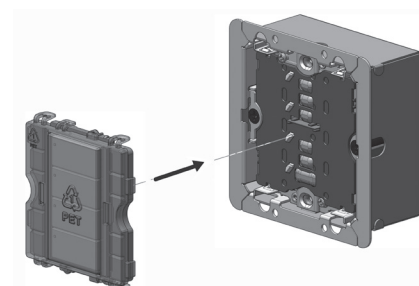
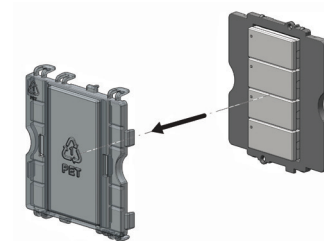


Products must be installed in accordance with the latest building and IEE wiring regulations.

## 3 Mounting



Mount the keypad to the backbox using the horizontally located screw holes only as shown.



Wallplate installation instructions are included with the wallplate. Replace construction cover with wallplate after construction has been completed.

## 4 Turn ON power at circuit breaker or install fuse



## 5 System setup

This keypad must be used in a RadioRA 3 system with a processor for control of dimmers, switches, and shades.

Use the RadioRA 3 programming software to setup the system (training is required to access the software).

## IMPORTANT

1. Install in accordance with all national and local electrical codes.
2. For indoor use only between 0 °C and 40 °C; 0%–90% humidity, non-condensing.

## Return to Factory Settings

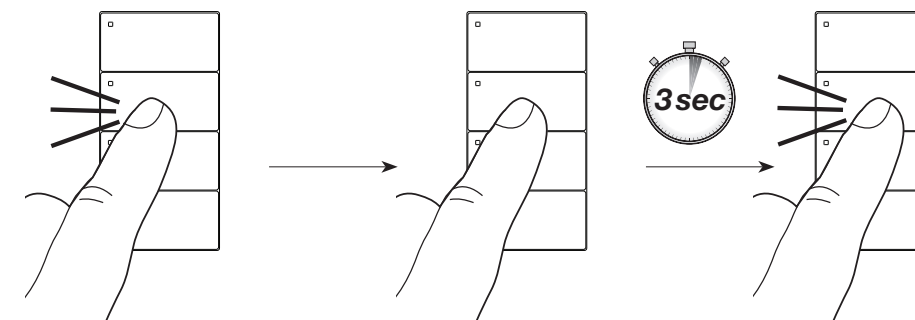
**Note:** Returning a keypad to its factory settings will remove the keypad from the system and erase all programming.

**Step 1:** Triple tap any button on the keypad (except raise/lower). DO NOT release after third tap.

**Step 2:** Keep the button pressed on the third tap until all the status LEDs start to flash slowly (approximately 3 seconds).

**Step 3:** Immediately release the button and triple tap the button again. The status LEDs on the keypad will flash quickly.

The keypad has now been returned to its factory settings.



## Troubleshooting

Symptom	Cause	Action
Status LEDs on the keypad don't light up when buttons on it are pressed.	Power not present at keypad	Circuit breaker OFF or fuse is faulty. Turn ON breaker or replace fuse
	Incorrect wiring	Check the wiring against Step 2 of the instructions
A specific dimmer, switch, or shade / drapery is not assigned to the keypad.	The dimmer, switch or shade / drapery is not assigned to the keypad	Refer to the RadioRA 3 programming software and ensure the device is assigned to the keypad. Perform a transfer and make sure it is successful
	Failure has occurred on the lamp(s) controlled by the dimmer/switch	Replace the lamp(s)
	There is no power to the dimmer, switch, shade / drapery	Ensure that the device is powered
Devices are out of range when a button is pressed on the keypad.	Devices are out of range	Ensure the device is placed within 6 m of two additional compatible wireless devices
	The button was not programmed correctly	Refer to the RadioRA 3 programming software and ensure the device is assigned to the keypad. Perform a transfer and make sure it is successful
Dimmer, switch or shade / drapery does not go to the desired level or position when a button on the keypad is pressed.	Devices are out of range	Ensure the device is placed within 6 m of two additional compatible wireless devices
	The keypad is in the Factory Settings mode and has not been configured to work in a system	Refer to the RadioRA 3 programming software and ensure the device is assigned to that keypad. Perform a transfer and make sure it is successful

**Note:** Refer to the system setup guide for additional troubleshooting suggestions.