

Please read before installing.

RRE-HDS-1

RR-HD

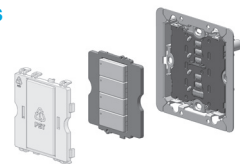
220 - 240 V~ 50/60 Hz

1 A 150 W
LED

250 W
Inc./Hal./ELV

Included Components

Bulk Hybrid Keypad
Button Kit*
Construction Cover
Mounting Screws



*For RR-HD only

Help

RA3 Support Center
For additional support with
installing, programming,
and troubleshooting



lutron.com/RA3support

Europe: +44.(0)20.7702.0657

Indonesia: +001.803.011.3994

KSA: +140.025.05512

Singapore: +800.120.4491

Thailand: +001.800.120.665853

UAE: +800.031.10102

India: +000800.050.1992

U.S.A./Canada: 1.844.LUTRON1

Mexico: +1.888.235.2910

Other Countries (toll): +971600521581

Fax: +1.610.282.6311

www.lutron.com/support

Limited Warranty:

https://assets.lutron.com/a/documents/intl_warranty.pdf



Hereby, Lutron Electronics Co., Inc. declares that the radio equipment type RRE-HDS-1 and RR-HD are in compliance with Directive 2014/53/EU

The full text of the EU declaration of conformity is available at the following internet address: lutron.com/cedoc

Lutron, the Lutron logo, and RadioRA 3 are trademarks or registered trademarks of Lutron Electronics Co., Inc. in the US and/or other countries.

All other product names, logos, and brands are property of their respective owners.

1 Turn OFF power at circuit breaker or remove fuse



WARNING: SHOCK HAZARD.

May result in serious injury or death. Always isolate the mains power supply or remove fuse before servicing or installing.

2 Load types and ratings

Load Type	Minimum Load	Maximum Load	Neutral
LED (Dimming ¹)	10 W ²	1 A 150 W	Preferred
ELV with LEDs	10 W	250 W	Required
ELV with Inc./Hal.	10 W	250 W	Required
Inc./Hal.	10 W ²	250 W	Preferred

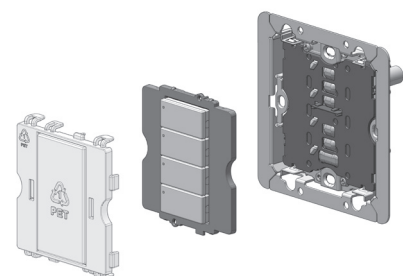
¹ LED rating is 1 A. If no current rating is specified on the LED lamp, a power rating of 150 W can be used.

² 0 W minimum load if neutral is connected.

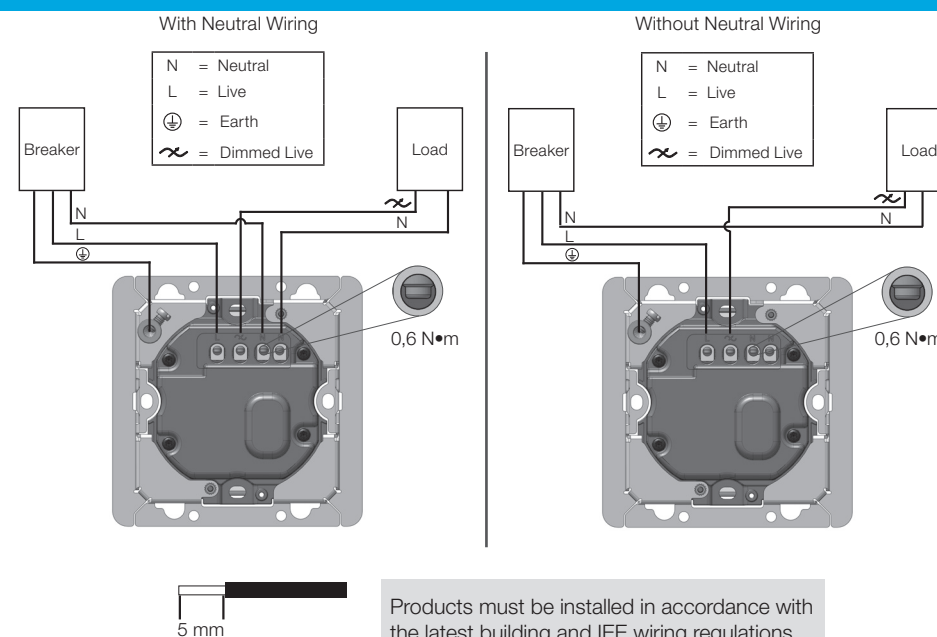
NOTE: Do not install hybrid keypads to control receptacles or motor-operated appliances.

3 Wiring

Remove the construction cover, button kit*, and set aside. Connect the wires using one of the two diagrams on the right.

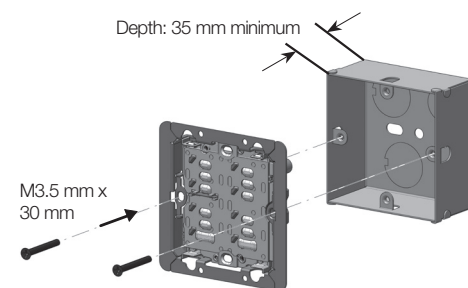


*For RR-HD only

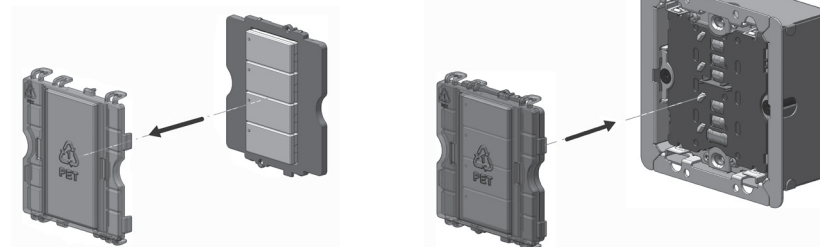


Products must be installed in accordance with the latest building and IEE wiring regulations.

4 Mounting



Mount the hybrid keypad to the backbox using the horizontally located screw holes only as shown.



Wallplate installation instructions are included with the wallplate. Replace construction cover with wallplate after construction has been completed.

5 Turn ON power at circuit breaker or install fuse



6 System setup

For control of other dimmers, switches, and shades this hybrid keypad must be used in a RadioRA 3 system with a processor.

Use the RadioRA 3 programming software to setup the system (training is required to access the software).

IMPORTANT

- CAUTION: Use only with permanently installed lighting fixtures. To avoid overheating and possible damage to other equipment, do not use to control receptacles.
- Install in accordance with all national and local electrical codes.
- For indoor use only between 0 °C and 40 °C (32 °F and 104 °F); 0%–90% humidity, non-condensing.

Return to Factory Settings

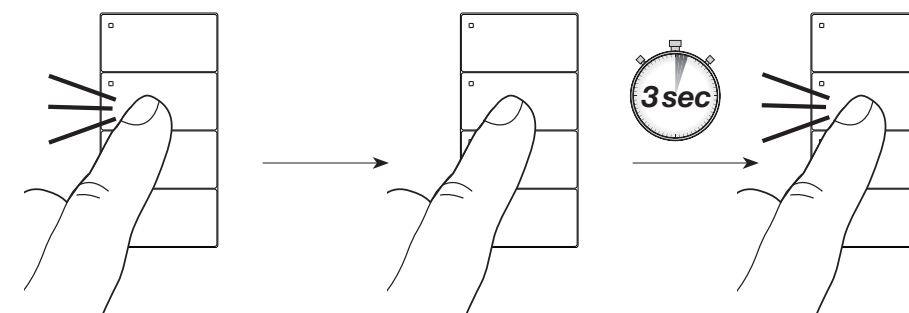
Note: Returning a hybrid keypad to its factory settings will remove the hybrid keypad from the system and erase all programming.

Step 1: Triple tap any button on the hybrid keypad (except raise/lower). DO NOT release after third tap.

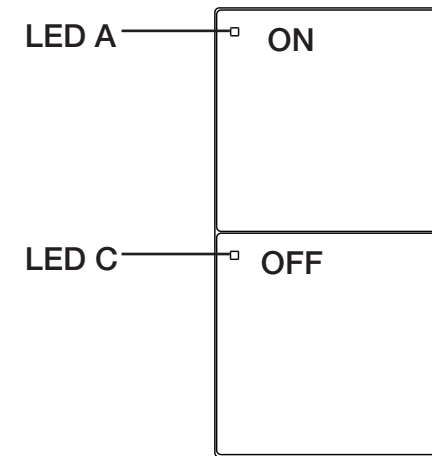
Step 2: Keep the button pressed on the third tap until all the status LEDs start to flash slowly (approximately 3 seconds).

Step 3: Immediately release the button and triple tap the button again. The status LEDs on the hybrid keypad will flash quickly.

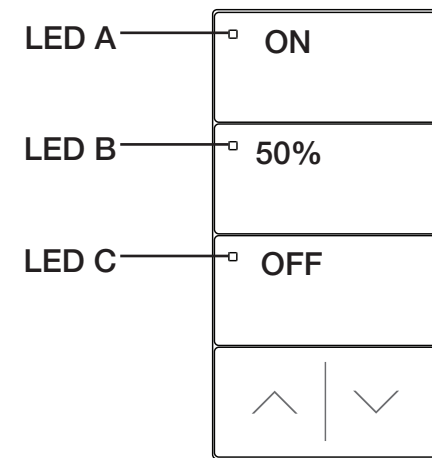
The hybrid keypad has now been returned to its factory settings.



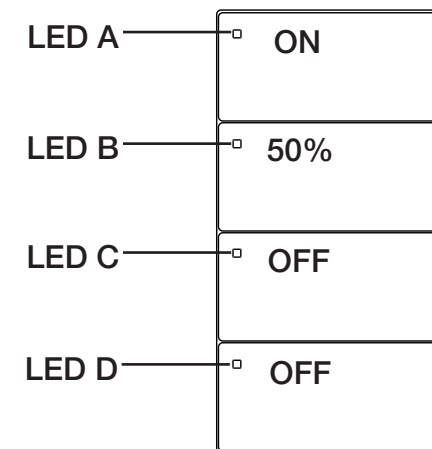
Default button operation shown. They will be over-written by the system software during system programming.



2-Button



3-Button with Raise/Lower



4-Button

Troubleshooting

Symptoms	Probable cause	Action
LED A blinks 1 second ON, 1 second OFF	Hot and dimmed live wires are reversed.	Check wiring against Step 3 of the instructions.
LEDs A and C alternate 1 Hz, 1 second ON, 1 second OFF	Over-voltage detected	1. Ensure the input voltage to the device is less than 260 V~. 2. Verify the device is not controlling a magnetic low-voltage transformer.
LED A is constantly ON. LED C blinks 1 second ON, 1 second OFF	Over-current detected	1. Check the wiring against Step 3 of the instructions. Verify that the neutral and dimmed live wires are not swapped. 2. Check for short circuits to neutral or ground in all wiring locations, including at the load. 3. Replace the load(s) to check if it failed as a short.
LEDs A and C blink 1 second ON, 1 second OFF	Over-temperature detected	1. Ensure load is within ratings noted in the instructions. 2. Ensure ambient temperature is less than 40 °C.
LED lights do not operate well or they flicker / buzz	The low-end is not adjusted	Low-end trim may need to be adjusted for best LED bulb performance. Trim can be adjusted in the Lutron app.
	The bulb is not compatible with your Lutron dimmer	Verify LED bulbs are marked dimmable.
LED lights do not dim low enough	The low-end is not adjusted	Low-end trim may need to be adjusted for best LED bulb performance. Trim can be adjusted in the Lutron app.
Status LEDs on the hybrid keypad don't light up when buttons on it are pressed	Power not present at hybrid keypad	1. Circuit breaker OFF or fuse is faulty. Turn ON breaker or replace fuse. 2. Verify that the wire connections did not come loose.
	Incorrect wiring	Check the wiring against Step 3 of the instructions.
A specific dimmer, switch or shade/drapery is not controlled when a button is pressed on the hybrid keypad	The dimmer, switch or shade/drapery is not assigned to the hybrid keypad	Refer to the programming software and ensure the device is assigned to the hybrid keypad. Perform a transfer and make sure it is successful.
	Failure has occurred on the bulb(s) controlled by the dimmer/switch	Replace the bulb(s).
	There is no power to the dimmer, switch, shade/drapery	1. Circuit breaker OFF or fuse is faulty. Turn ON breaker or replace fuse. 2. Verify that the wire connections did not come loose.
	Devices are out of range	Ensure this device is placed within 6 m of two additional compatible wireless devices.
Dimmer, switch or shade/drapery does not go to the desired level or position when a button on the hybrid keypad is pressed	The button was not programmed correctly	Refer to the programming software and ensure the device is assigned to the hybrid keypad. Perform a transfer and make sure it is successful.
	Devices are out of range	Ensure this device is placed within 6 m of two additional compatible wireless devices.
All status LEDs on the hybrid keypad flash when any button is pressed	The hybrid keypad is in the Factory Settings mode and has not been configured to work in a system	Refer to the programming software and ensure the device is assigned to that hybrid keypad. Perform a transfer and make sure it is successful.
	Power not present at hybrid keypad	1. Circuit breaker OFF or fuse is faulty. Turn ON breaker or replace fuse. 2. Verify that the wire connections did not come loose.
	Lights do not respond to a hybrid keypad button press or do not go to desired levels	Bulbs burned out or not installed
Non-dimmable lamps		If non-dimmable lamps are being used, replace with dimmable lamps.
Improper programming		Program according to the system Setup Guide.
Attached lights turn ON when top hybrid keypad button is pressed, then turn OFF	Load is less than minimum load requirement	Make sure the connected load meets the appropriate minimum load requirement for the control. See Step 2, Load types and derating.
	Improper programming	Program according to the system Setup Guide.
Wallplate is warm	Solid-state control dissipation	Solid-state hybrid keypads internally dissipate about 2% of the total connected load. It is normal for hybrid keypads to feel warm to the touch during operation.