

Sunnata Switch MyLevel Personalization

Sunnata Models

- ST-6ANS Sunnata Switch
- RRST-8ANS Sunnata RF Switch
- HRST-8ANS Sunnata RF Switch

Overview

MyLevel personalization gives you the ability to customize your Sunnata switch. From the main switch only, you can adjust the brightness of the light bar or turn off the locator light using MyLevel personalization. MyLevel personalization cannot be entered from a companion switch. Companion switches will match the settings of the main switch.

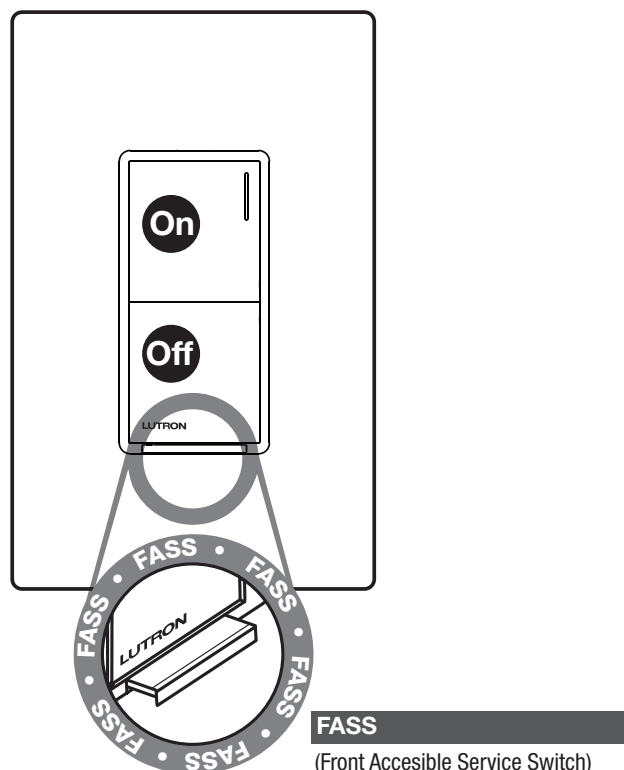
Identify your main switch:

Pull the FASS (Front Accessible Service Switch) out and push it back in. If the light bar blinks, this is your main switch. If not, go to your next location in your installation and repeat until you locate your main switch.

Easily adjust your switch in 4 steps:

1. Enter MyLevel
2. Light Bar Brightness Mode
3. Light Level Indicator/Locator Light Mode
4. Exit MyLevel

Switch



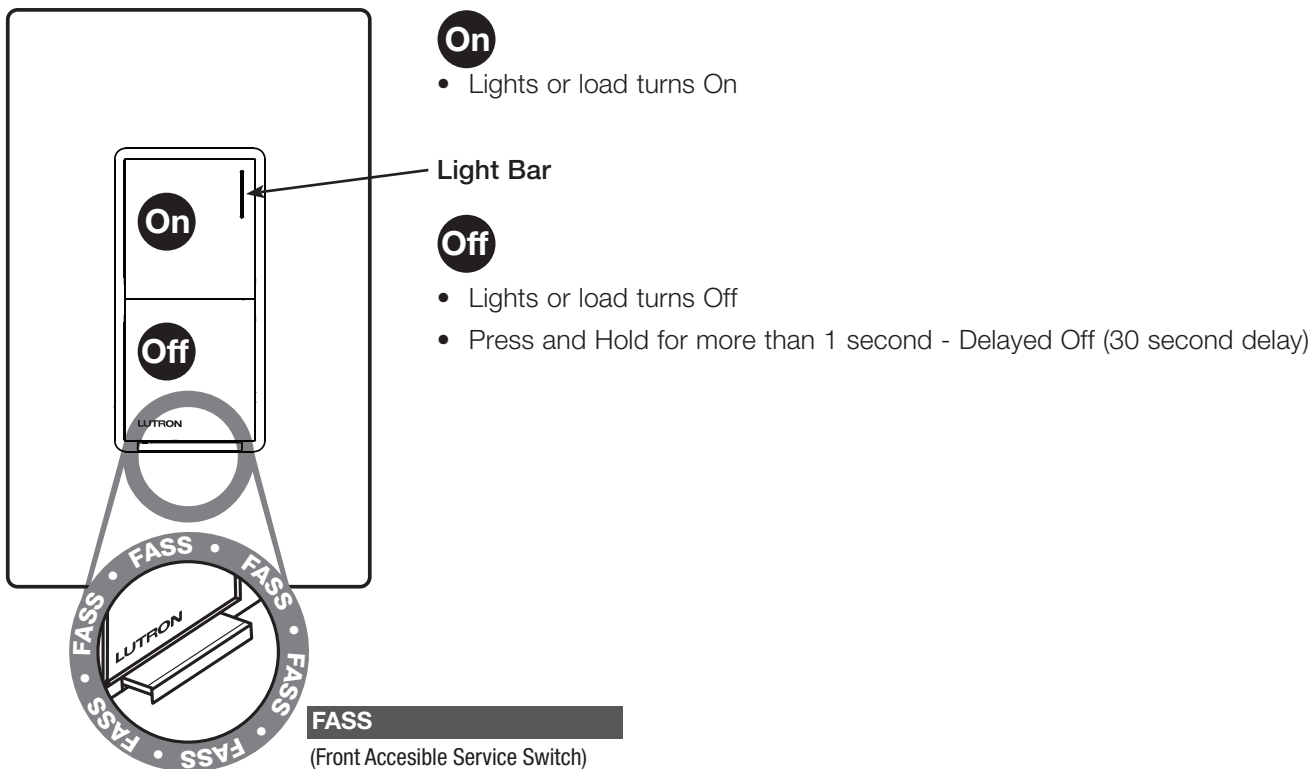
Glossary:	2
Restore Factory Default Settings:	
Return the control to its original settings.	8

Default Settings

Feature	Default
Light level indicator / Locator light	ON/ON
Light bar brightness	Medium brightness

Glossary

Default Setting	The way the feature operates when the control is first used.
Factory Default	The way all the features operate when the control is first used.
FASS	Tab at the bottom of the control, required to be pulled out for light bulb(s) replacement and entering <i>MyLevel personalization mode</i> ; also known as <i>Air Gap</i> .
Light Bar	The small bar on the upper right side of the Sunnata switch paddle. See the diagram below.
Light Level Indicator	The light bar is illuminated to display that the load is on.
Load	The light or motor that the Sunnata switch is controlling.
Locator Light	The light bar's brightness on the Sunnata switch is faintly illuminated when the load is OFF.
Normal Operation	Standard use of control (ON/OFF); indicator lights will not be flashing.
Tap	Momentary activation of the ON/OFF button. Less than 1 second.



Using MyLevel

MyLevel consists of a series of four steps. Two of the steps are adjustable features.

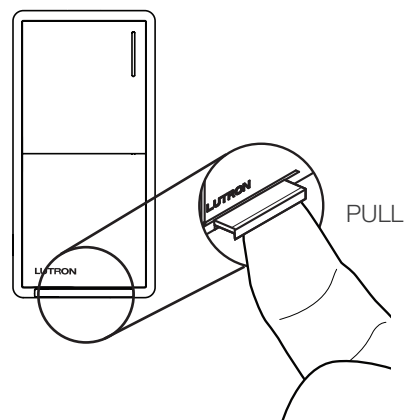
1. **Enter MyLevel**
2. **Light Bar Brightness Mode**
3. **Light Level Indicator/Locator Light Mode**
4. **Exit MyLevel**

Notes:

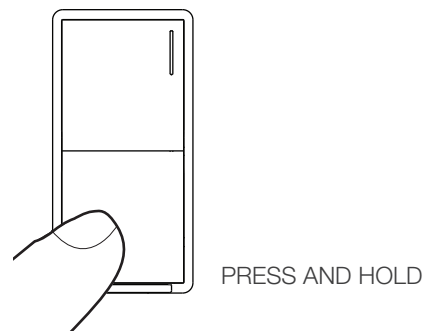
- The **MyLevel** settings are saved when the control transitions from one mode to the next.
- The control will automatically exit **MyLevel** after 1 minute of inactivity.
- **MyLevel** cannot be entered from a companion switch location.

Enter MyLevel

1. **Pull** the Front Accessible Service Switch (**FASS**) out to the open position.



2. **Press and hold** the **Off** button.

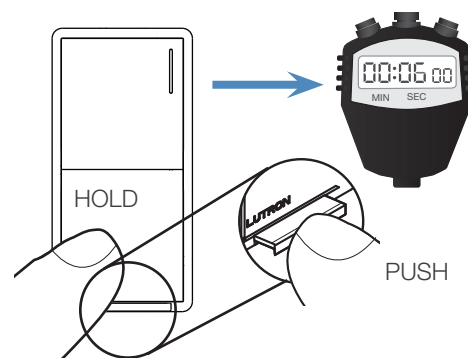


(continued on next page . . .)

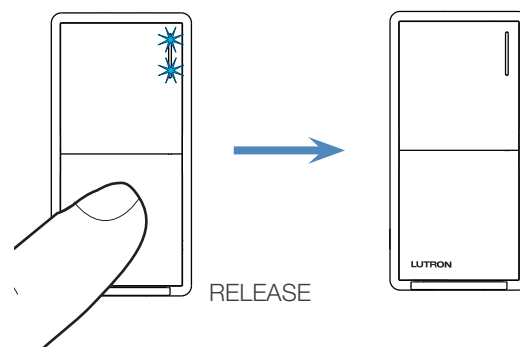
Using MyLevel (continued)

Enter MyLevel (continued)

3. While continuing to **hold** the **Off** button, **push** the Front Accessible Service Switch (**FASS**) in to the closed position. Continue to **hold** the **Off** button **for approximately 6 seconds**. The light bar will begin to **flash ON and OFF at a rate of ~4 times/second**.



4. **Release** the **Off** button and the light bar will stop flashing and enter **Light Bar Brightness Mode**.



(continued on next page . . .)

Light Bar Brightness Mode

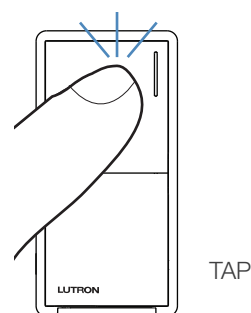
Selection Feedback

Select between high-, medium-, and low-brightness of the control's light bar. **Default** - Medium brightness.

1. The light bar will flash ON and OFF at a rate of 4 times/second (**default**) with 3 seconds in between, and repeat.
2. The 3 second delay is reset when changing brightness settings.
3. The flash patterns for the brightness setting are as follows:
 - 2 flashes: Low brightness
 - 4 flashes: Medium brightness (**Default**)
 - 6 flashes: High brightness

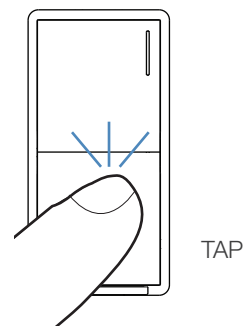
Selection

1. Tapping the **On** button will cycle through the brightness levels.
2. The control's light bar will update its brightness to match the selection.



Exit

1. Tapping the **Off** button will save the setting and transition to **Light Level Indicator/Locator Light Mode**.



Light Level Indicator/Locator Light Mode

Selection Feedback

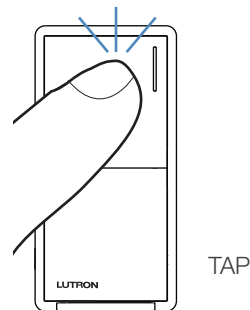
Select between On and Off for the light bar when the load is on (light level indicator) and when the load is off (locator light).

Default - On/On.

1. The light bar will flash 1 time/second with 3 seconds between repeating flash patterns.
2. The 3 second delay is reset when changing light bar settings.
3. The flash patterns for the light bar setting are as follows:
 - 1 flash: Light Level Indicator ON / Locator Light ON (**Default**)
 - 3 flashes: Light Level Indicator ON / Locator Light OFF
 - 5 flashes: Light Level Indicator OFF / Locator Light ON
 - 7 flashes: Light Level Indicator OFF / Locator Light OFF

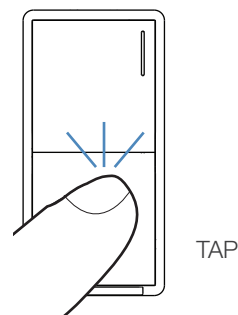
Selection

1. Tapping the **On** button will cycle through the different options.



Exit

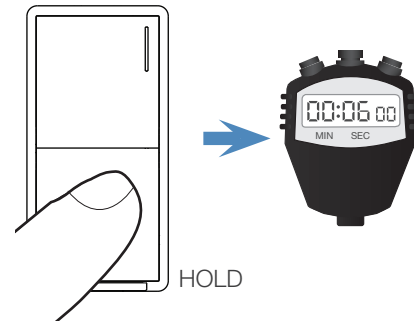
1. Tapping the **Off** button will save the setting and transition back to **Light Bar Brightness Mode**.



Exit MyLevel

Exit

1. Hold the **Off** button for 6 seconds.
2. MyLevel is automatically exited after one minute of no button activity.
3. The main control sends updated LED settings to the companion switch(es).



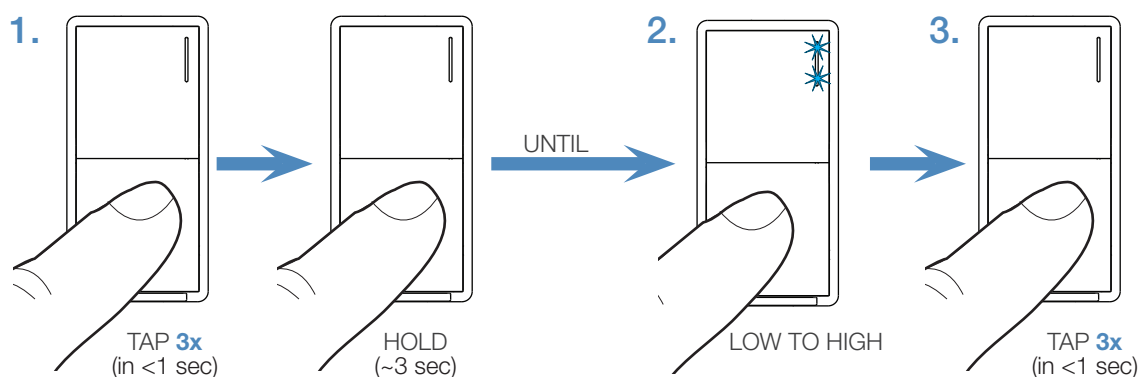
Restore Factory Default Settings

The switch can be returned to its original factory settings. This allows the customer a risk-free experience to try multiple settings.

Default Settings

Feature	Default
Light level indicator/Locator light	ON/ON
Light bar brightness	Medium brightness

1. **Triple tap** the **On** or **Off** button **rapidly, holding** on the last press.
2. **Continue holding** until the light bar begins to flash quickly (~3 seconds).
3. Immediately **triple tap** the **On** or **Off** button again and **release**. The light bar will flash more slowly.
4. The light bar will flash slowly until the process is complete and normal operation will resume.



Note: While the main switch is restoring factory default settings, the light bar on the companion switch will be flashing and the buttons will be disabled.

System Features (HRST and RRSST Models Only)

Some switch behavior features can only be adjusted through the Lutron Designer software.

1. **Delay-to-Off (DTO) Time:** Allows for control over how quickly / slowly the load turns off. This setting delays the time between when the OFF button is pressed (normal operation) and when the lights actually turn off.

Lutron, FASS, MyLevel, and Sunnata are trademarks or registered trademarks of Lutron Electronics Co., Inc. in the US and/or other countries.

Lutron Contact Numbers

WORLD HEADQUARTERS

USA

Lutron Electronics Co., Inc.
7200 Suter Road
Coopersburg, PA 18036-1299

TEL: +1.610.282.3800

FAX: +1.610.282.1243

support@lutron.com

www.lutron.com/support

North & South America

Customer Assistance

USA, Canada, Caribbean:

1.844.LUTRON1 (1.844.588.7661)

Mexico:

+1.888.235.2910

Central/South America:

+1.610.282.6701

UK AND EUROPE:

Lutron EA Limited

125 Finsbury Pavement
4th floor, London EC2A 1NQ
United Kingdom

TEL: +44.(0)20.7702.0657

FAX: +44.(0)20.7480.6899

FREephone (UK): 0800.282.107

Technical Support: +44.(0)20.7680.4481

lutronlondon@lutron.com

ASIA:

Lutron GL Ltd.

390 Havelock Road
#07-04 King's Centre
Singapore 169662

TEL: +65.6220.4666

FAX: +65.6220.4333

Technical Support: 800.120.4491

lutronsea@lutron.com

Asia Technical Hotlines

Northern China: 10.800.712.1536

Southern China: 10.800.120.1536

Hong Kong: 800.901.849

Indonesia: 001.803.011.3994

Japan: +81.3.5575.8411

Macau: 0800.401

Taiwan: 00.801.137.737

Thailand: 001.800.120.665853

Other Countries: +65.6220.4666