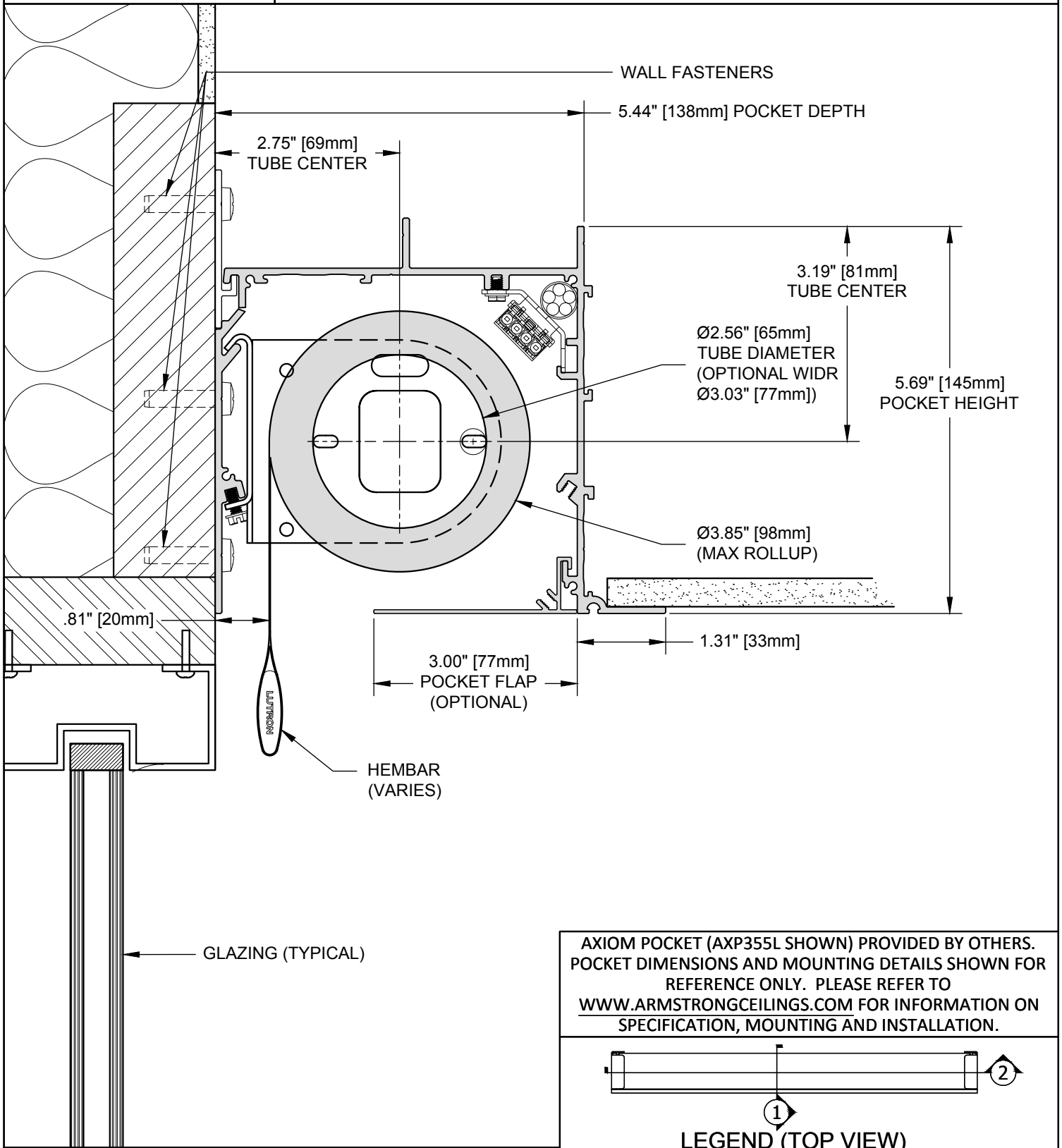
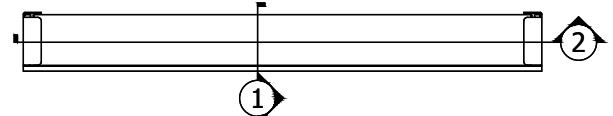


ROLLER 100/150/300

ARMSTRONG COMPATIBLE SHADE WITH 5" POCKET



AXIOM POCKET (AXP355L SHOWN) PROVIDED BY OTHERS. POCKET DIMENSIONS AND MOUNTING DETAILS SHOWN FOR REFERENCE ONLY. PLEASE REFER TO WWW.ARMSTRONGCEILINGS.COM FOR INFORMATION ON SPECIFICATION, MOUNTING AND INSTALLATION.



LEGEND (TOP VIEW)

SHADE INSTALLED AS PROVIDED BY FACTORY WILL HAVE ALL NECESSARY CLEARANCES FOR PROPER OPERATION. IF ADJUSTMENT FEATURES ARE UTILIZED, IT IS THE RESPONSIBILITY OF THE INSTALLER TO ENSURE PROPER CLEARANCES ARE MAINTAINED. NOT ALL ADJUSTMENTS ARE AVAILABLE AT MAXIMUM ROLL Ø.

ROLLER 100/150/300 085401

SCALE: 1/2 VIEW: 1 REVISION: A

SECTION VIEW