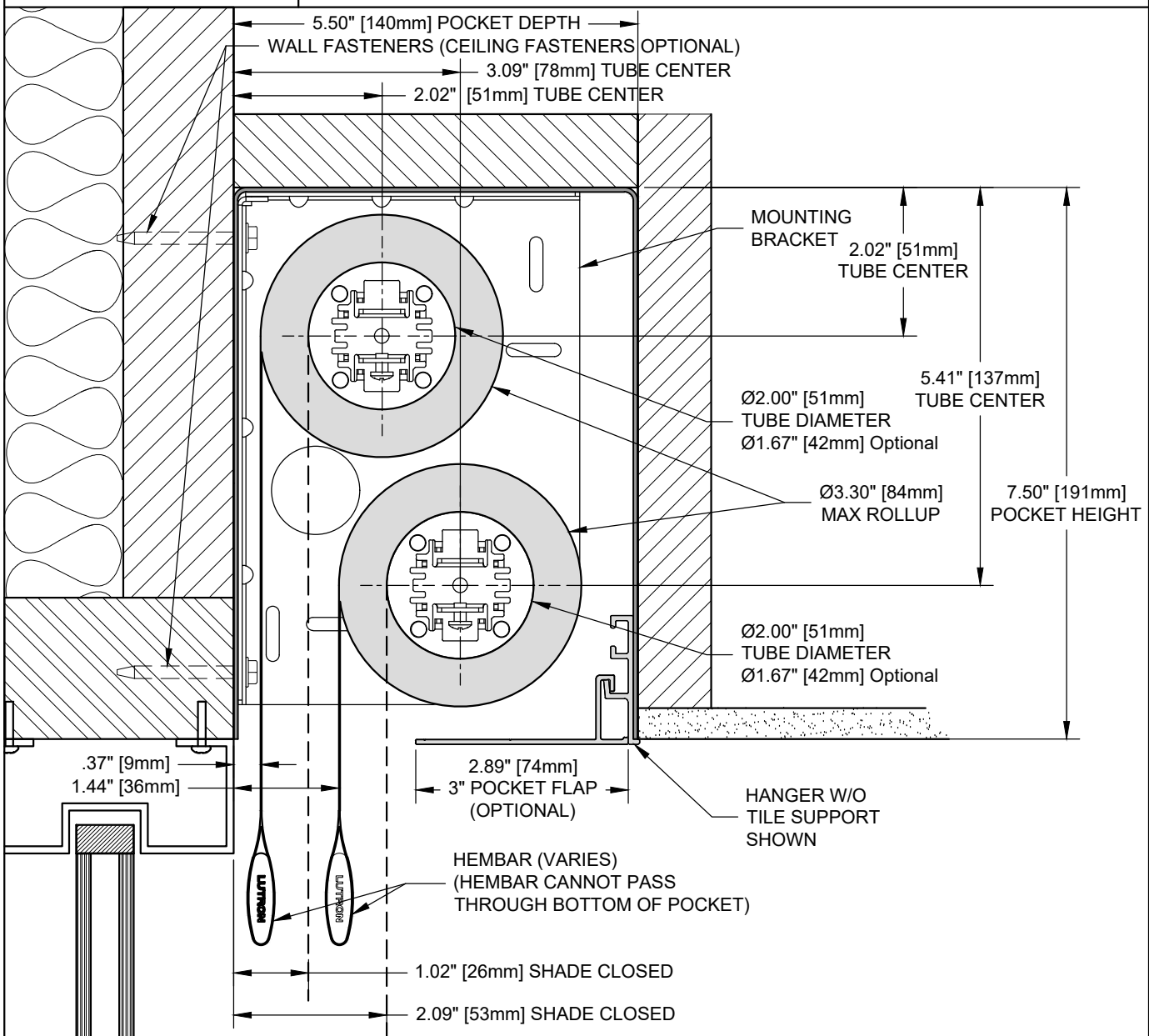
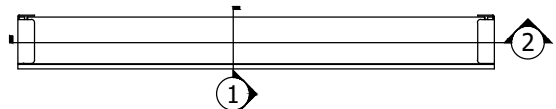


**ROLLER 64 WIDR**

**DUAL MOUNT SHADE IN 5.5" X 7.5" POCKET**



MULTIPLE MOUNTING CONFIGURATIONS ARE ALLOWED: THIS BRACKET SUPPORTS CEILING, WALL AND JAMB MOUNTING (WALL MOUNT SHOWN).



LEGEND (TOP VIEW)

SHADE INSTALLED AS PROVIDED BY FACTORY WILL HAVE ALL NECESSARY CLEARANCES FOR PROPER OPERATION. IF ADJUSTMENT FEATURES ARE UTILIZED, IT IS THE RESPONSIBILITY OF THE INSTALLER TO ENSURE PROPER CLEARANCES ARE MAINTAINED. NOT ALL ADJUSTMENTS ARE AVAILABLE AT MAXIMUM ROLL Ø.

**ROLLER 64**

**085766**

SCALE: 1/2

VIEW: 1

REVISION: A



**LUTRON**

Lutron Electronics Co., Inc.  
7200 Suter Road | Coopersburg, PA 18036 | USA  
1 (800) 446-1503 | Fax: (610) 282-7439  
<http://www.lutron.com>

**SECTION VIEW**