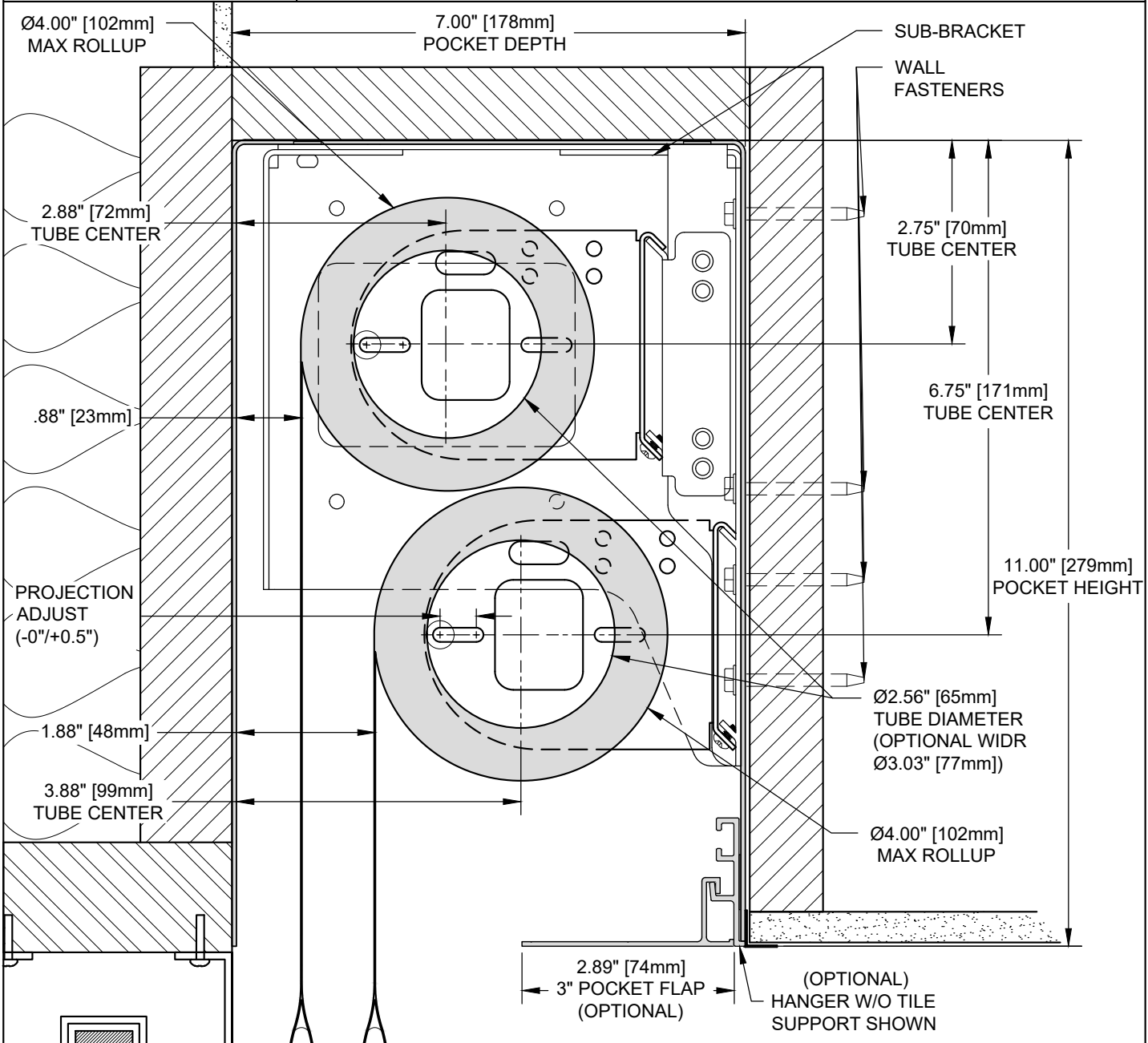


ROLLER 100/150/300 **DUAL MOUNT SHADE IN 7"X11" POCKET**



MULTIPLE MOUNTING CONFIGURATIONS ARE ALLOWED: THIS BRACKET SUPPORTS CEILING, WALL OR JAMB MOUNTING (WALL MOUNT SHOWN).



SHADE INSTALLED AS PROVIDED BY FACTORY WILL HAVE ALL NECESSARY CLEARANCES FOR PROPER OPERATION. IF ADJUSTMENT FEATURES ARE UTILIZED, IT IS THE RESPONSIBILITY OF THE INSTALLER TO ENSURE PROPER CLEARANCES ARE MAINTAINED. NOT ALL ADJUSTMENTS ARE AVAILABLE AT MAXIMUM ROLL Ø.

ROLLER 100/150/300	085833
SCALE: 1/2	VIEW: 1
REVISION: A	