

Maestro[®] Occupancy Sensors



www.lutron.com



World Headquarters 1.610.282.3800
Technical Support 1.800.523.9466 (Available 24/7)
Customer Service 1.888.LUTRON1 (1.888.588.7661)

© 01/2013 Lutron Electronics Co., Inc. | P/N 367-2351 REV B



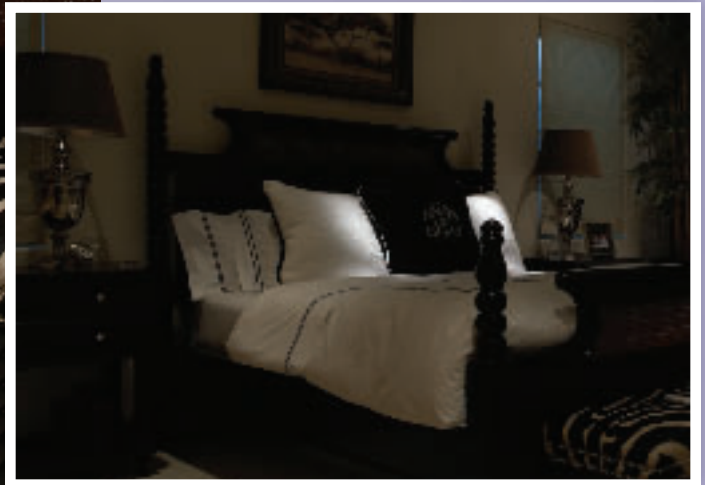


Enhance your home

**with energy savings, convenience,
and style.**

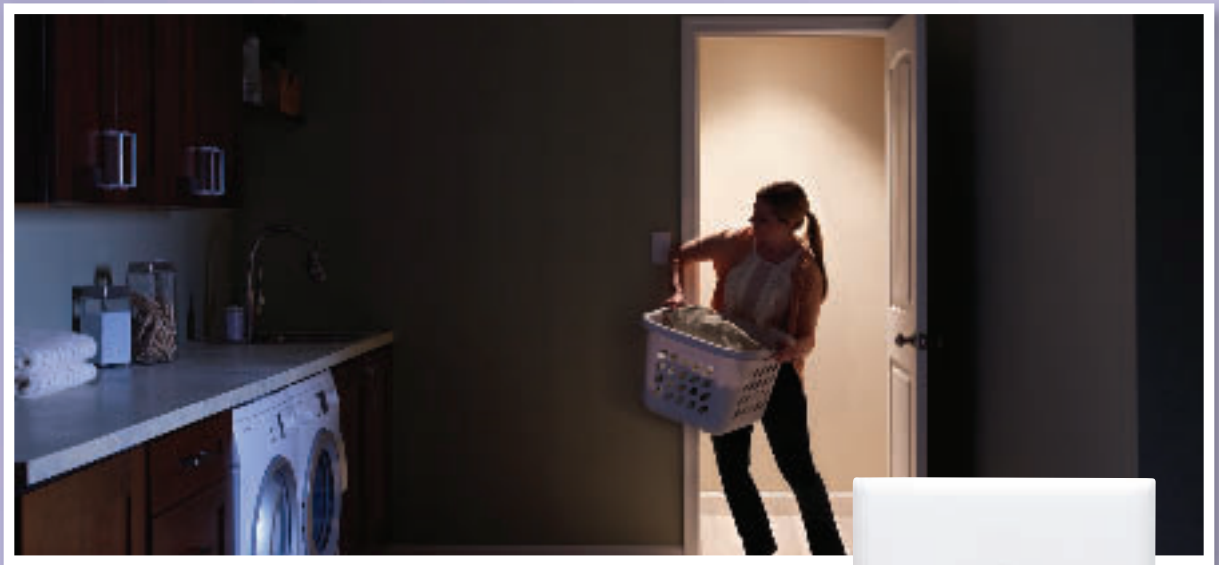
Meastro Occupancy Sensors:

- Energy Savings—lights turn off automatically when a room is unoccupied
- Convenience—simple technology offers hands-free light control
- Style—sleek design is available in 27 fashion colors



Laundry Room

Turn this space . . .



When you enter a room with your hands full, it's difficult to turn on the light.



Existing toggle switch

into this space.



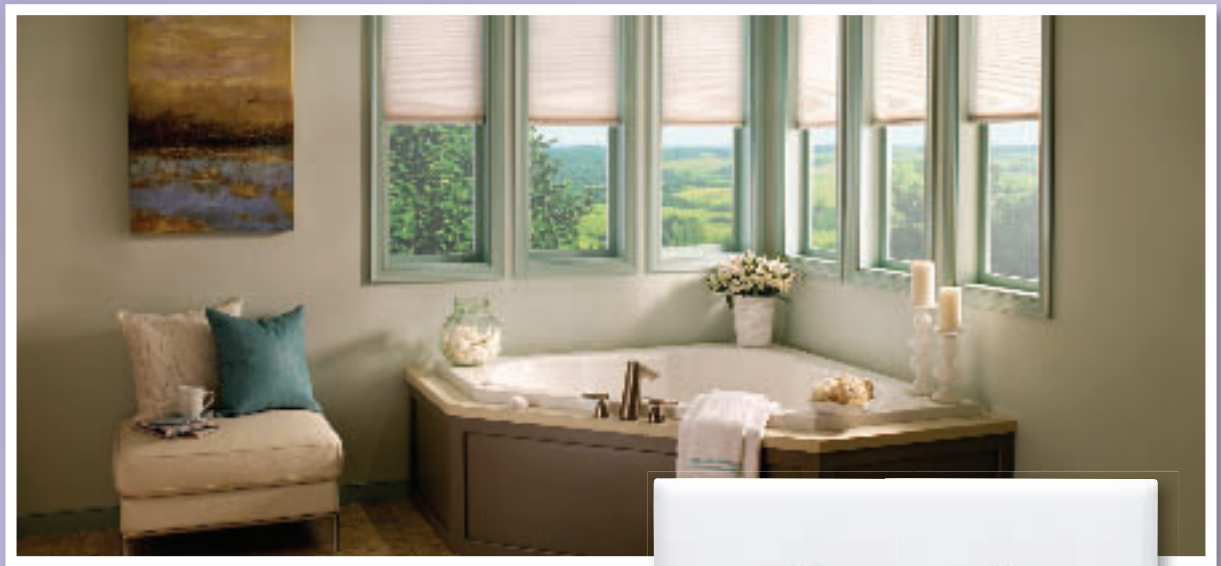
Add hands-free light control to your laundry room, work spaces, or closets with an occupancy sensor. Lights turn on when you enter to enhance convenience, and automatically turn off when the room is unoccupied to save electricity.



Maestro® occupancy sensing switch

Bathroom

Turn this space . . .

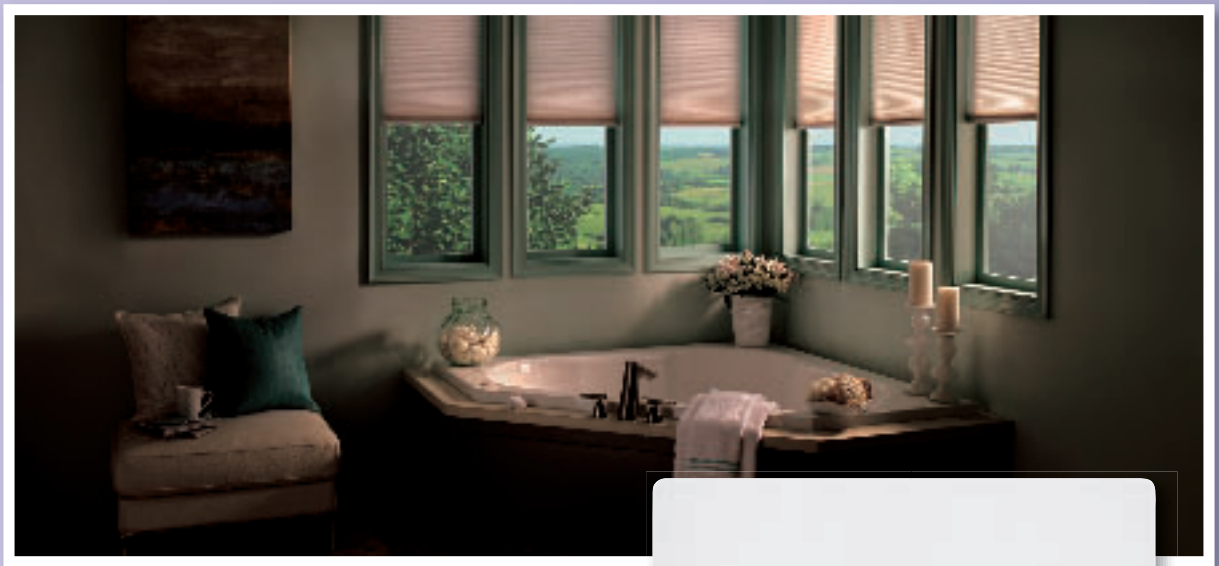


Bathrooms are a space where lights and exhaust fans are often left on accidentally.



Existing dimmer and toggle switch

into this space.



An occupancy sensor turns lights off automatically when the room is unoccupied and the timer counts down to turn off exhaust fans. With the Maestro occupancy sensing dimmer you can even upgrade your lighting while keeping the flexibility of a dimmer.



Maestro® occupancy sensing dimmer and countdown timer

Kitchen

Turn this space . . .

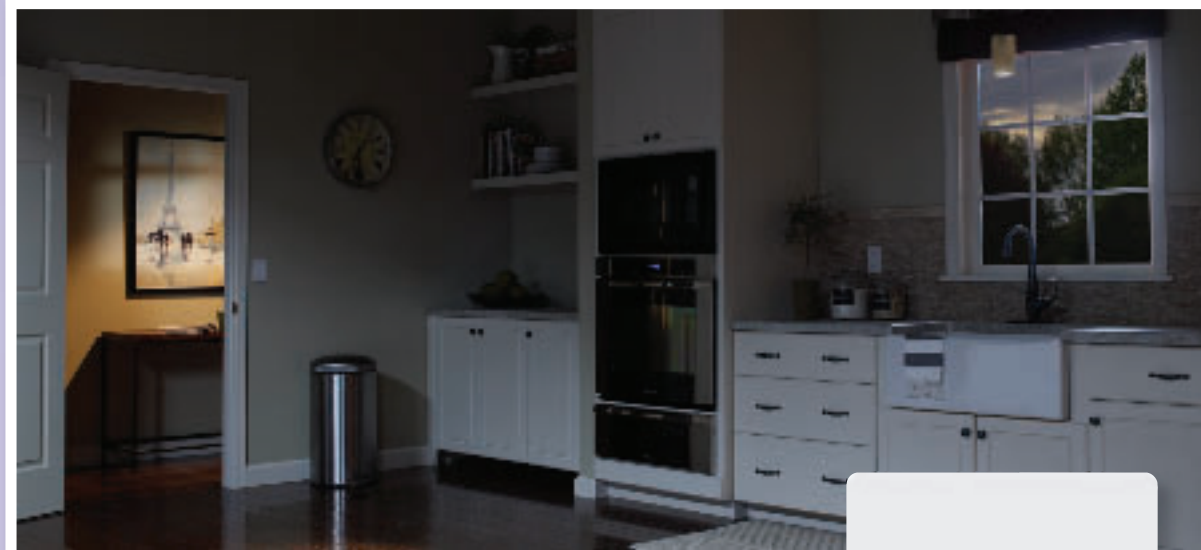


High-traffic areas of the home, like kitchens, are spaces where people often pass through and leave lights on long after they're gone from the space.



Existing paddle switch

into this space.



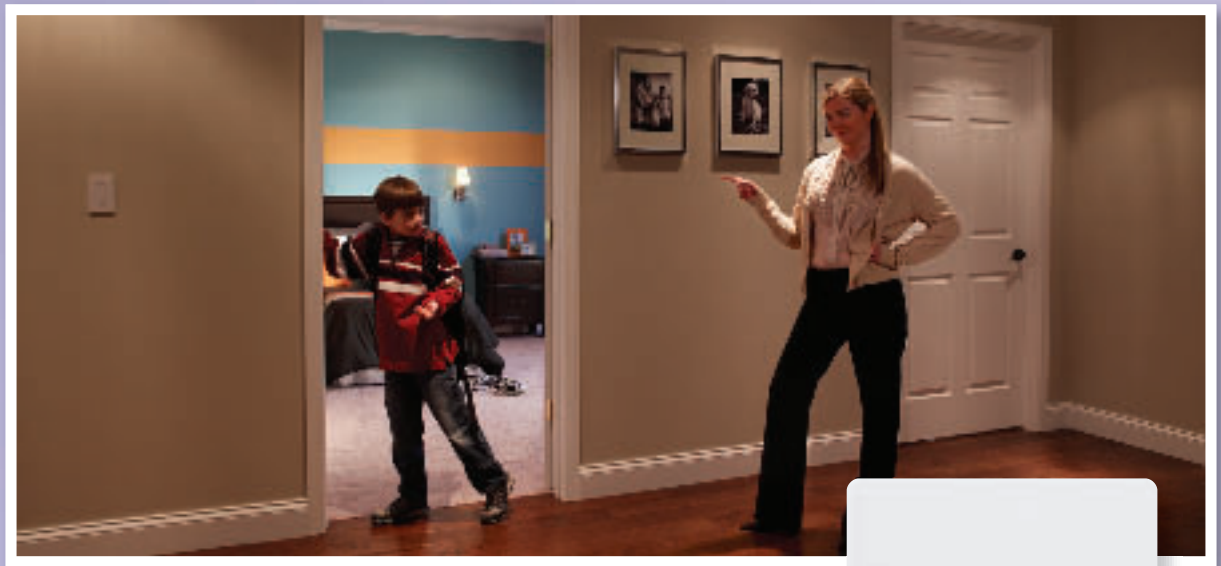
A Maestro sensor in vacancy mode allows you to turn lights on manually when needed and will turn lights off automatically when the space is unoccupied.



Maestro® occupancy sensing switch

Kid's Room

Turn this space . . .

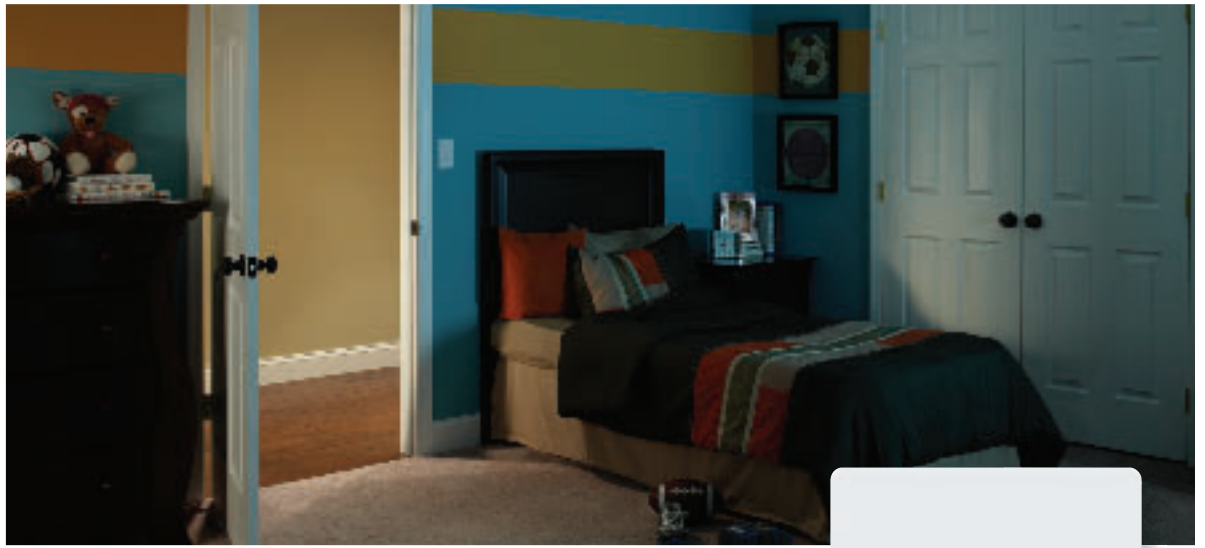


Kids often leave bedroom lights on and you aren't able to remind them every time they leave their rooms, which means energy gets wasted.



Existing Lutron® dimmer

into this space.



Make turning off bedroom lights easy with a Maestro sensor. When the room is empty lights automatically turn off to save energy. With the dimming function, lights can be kept bright for doing homework, or turned low as a night light.



Maestro® occupancy sensing dimmer

Maestro Occupancy Sensors

Occupancy sensing dimmer

- Adjust lights to any level while saving energy
- Works with dimmable CFLs and LEDs, incandescents and halogens



Occupancy sensing switch

- Ideal for non-dim lighting or motor loads
- Works with all bulb types



Maestro occupancy sensors use Lutron's reliable XCT™ detection technology which ensures lights stay on in occupied rooms.

Model Numbers

MSCL-OP153M-XX¹

- Multi-location/3-way/single-pole dimmer with occupancy/vacancy sensor
- 120 V, 150 W CFL/LED or 600 W incandescent/halogen

MS-OPS2-XX¹

- Single-pole switch with occupancy/vacancy sensor
- 120 V, 2 A light
- Work with incandescent/halogen, MLV, ELV, CFL, LED, magnetic/electronic ballasts

MS-OPS5M-XX¹




- Multi-location/3-way/single-pole switch with occupancy/vacancy sensor
- 120 V, 5 A light
- Works with incandescent/halogen, MLV, ELV, CFL, LED, magnetic/electronic ballasts, 3 A fan

MS-OPS6M-DV-XX¹

- Multi-location/single-pole switch with occupancy/vacancy sensor
- 120 V/277 V, 6 A light
- Works with incandescent/halogen, MLV, ELV, non-dim fluorescent ballasts, 3 Amp fan

The Colors of Lutron

Gloss colors:

 white (WH)	 gray (GR)
 ivory (IV)	 brown (BR)
 almond (AL)	 black (BL)
 light almond (LA)	

Satin Colors®:

 hot (HT)	 taupe (TP)
 merlot (MR)	 eggshell (ES)
 plum (PL)	 biscuit (BI)
 turquoise (TQ)	 snow (SW)
 sea glass (SG)	 palladium (PD)
 midnight (MN)	 mocha stone (MS)
 sienna (SI)	 goldstone (GS)
 terracotta (TC)	 desert stone (DS)
 greenbriar (GB)	 stone (ST)
 bluestone (BG)	 limestone (LS)



XX Color suffix

1 Vacancy only models also available. Replace the "O" in the model number with a "V" to order.