

PRODUCT REFERENCE GUIDE



RadioRA3

 LUTRON



Behind the scenes

The RadioRA 3 system was developed to work in any residence, new or existing. Easily install keypads, sensors, light, fan, temperature, and appliance controls, as well as shades to create a system that will best suit your needs. And you don't have to worry about the type of lighting in the home.

Whether you have LED, halogen, incandescent, electronic low-voltage, magnetic low-voltage, or fluorescent lights, the RadioRA 3 system will provide the control you need.

Processor

RR-PROC3-KIT1
(includes PoE injector and Ethernet cables)

RR-PROC3-CW
(includes ceiling and wall mounts)



Shelf-mount
L-SMNT-WH



Ceiling-mount
L-CMNT-WH



J-box-mount
L-JMNT-WH



PoE injector
L-POEI-BL (120V)



Wireless repeater
L-REPPRO-BL



Auxiliary repeater
RR-AUX-REP-WH



Visor control receiver
RR-VCRX-WH
Easy closed contact integration option



Lumaris tape light solutions

Tunable white tape light solution components

Buy everything together in a convenient starter kit, or order as individual parts.

Starter kits include:

- Tunable white wireless controller with mounting clip
- Tape light (16.4 ft/5 m)
- Plug-in power supply
- 3-pin wire/tape connectors (5)
- 3-conductor cable (10 ft/3 m)
- Wire connectors (3)

Starter kit options:

RRL-TLK-SW
Soft White (1800K-3000K)

RRL-TLK-DL
Daylight (2500K-5000K)

Starter kit components



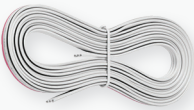
Tape light – soft white or daylight



Plug-in power supply



Tunable white wireless controller



3-conductor cable



Mounting clip for controller



3-pin wire/tape connectors



Tape light

LU-T05-SW
(16.4 ft/5m Soft White
– 1800K-3000K tape light reel)

LU-T30-SW
(98.4 ft/30m Soft White
– 1800K-3000K tape light reel)

LU-T05-DL
(16.4 ft/5m Daylight
– 2500K-5000K tape light reel)

LU-T30-DL
(98.4 ft/30m Daylight
– 2500K-5000K tape light reel)



Wireless controllers

RRL-TWC-WH
(Tunable white wireless controller
with plug-in power supply)

RRL-TWCL-DL
(Tunable white wireless controller)



Power supplies

T120-24DC-15
(Plug-in power supply)

LU-PH3-A
(Hard-wired power interface)

Accessories

LU-CK1-TW
3-pin wire/tape connectors (10-pack)

LU-BP1
Barrel-to-terminal adapters (3-pack)

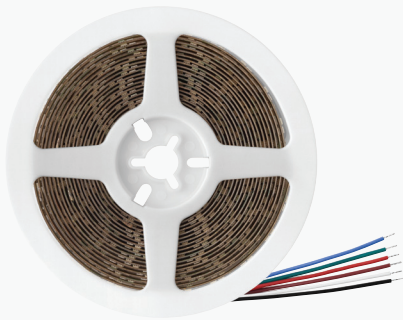
LU-MK1
Mounting clips for tape light (20-pack)

LU-WK1-TW
3-conductor cable (50 ft/15.2 m)



Lumaris tape light solutions

RGB + tunable white tape light solution components



Tape light
 LU-T05-RT-IN
 (16.4 ft/5m RGB + tunable white (1800K-4000K) tape light reel)
 LU-T30-RT-IN
 (98.4 ft/30m RGB + tunable white (1800K-4000K) tape light reel)

Accessories
 LU-CK1-6W
 6-pin wire/tape connectors (10-pack)
 LU-WK1-6W
 6-conductor cable (50 ft/15.2m)



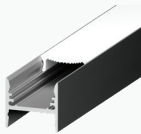
Wireless controller
 RRL-MWCL-WH
 (Multi-channel wireless controller)



Power supply
 LU-PH3-A
 (Hard-wired power interface)

LED tape extrusions

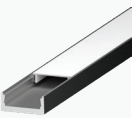
SR1
 Luxury diffusion with hidden mounting
 LU-SR1-K
 (Extrusion bundle)
 LU-SR1-ACS
 (Accessories pack)



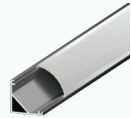
SR2
 Classic rectangular surface-mount
 LU-SR2-K
 (Extrusion bundle)
 LU-SR2-ACS
 (Accessories pack)



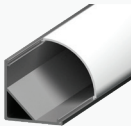
SR3
 Thin, low profile surface-mount
 LU-SR3-K
 (Extrusion bundle)
 LU-SR3-ACS
 (Accessories pack)



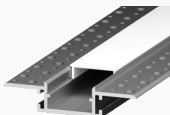
45S
 Classic 45° angled surface-mount
 LU-45S-K
 (Extrusion bundle)
 LU-SR4-ACS
 (Accessories pack)



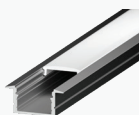
45T
 Large 45° with premium diffusion
 LU-45T-K
 (Extrusion bundle)
 LU-45T-ACS
 (Accessories pack)



MI1
 Mount into drywall for a flush light beam
 LU-MI1-K
 (Extrusion bundle)
 LU-MI1-ACS
 (Accessories pack)



RR1
 Recessed mount with a clean finish
 LU-RR1-K
 (Extrusion bundle)
 LU-RR1-ACS
 (Accessories pack)



Extrusion bundles include:

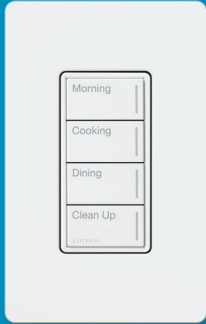
- Aluminum extrusion [8 ft (2.44 m)]
- Frosted lens [8 ft (2.44 m)]
- Open end caps (2)
- Closed end caps (2)
- Mounting clips (6)
- Mounting screws (6)

Accessories packs include:

- Open end caps (2)
- Closed end caps (2)
- Mounting clips (6)
- Mounting screws (6)

Keypads

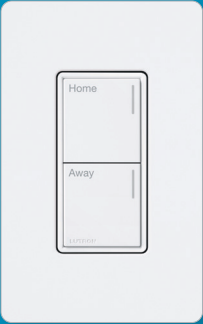
Sunnata RF keypads*†



RRST-W4B-XX
(4-button)



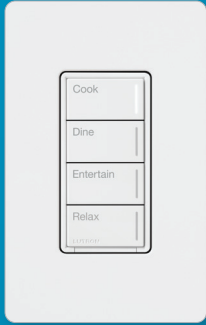
RRST-W3RL-XX
(3-button with raise/lower)



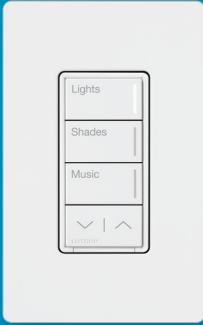
RRST-W2B-XX
(2-button)

STBK-W-XX
(replacement button kit,
orderable through myProjects)

Sunnata RF hybrid keypads*†



RRST-HN4B-XX
(4-button)



RRST-HN3RL-XX
(3-button with raise/lower)



RRST-HN2B-XX
(2-button)

STBK-H-XX
(replacement button kit,
orderable through myProjects)

seeTouch wall-mounted keypads*†



RRD-W1RLD-XX
(3-button, 2-button with
raise/lower, dual group)



RRD-W2RLD-XX
(2-button with raise/
lower, dual group)



RRD-W3BD-XX
(3-button, dual group)



RRD-W3BRL-XX
(3-button group with
raise/lower)



RRD-W3S-XX
(3-button favorite
scene with raise/lower)



RRD-W3BSRL-XX
(3-button spaced
with raise/lower)



RRD-W4S-XX
(4-button
favorite scene
with raise/lower)



RRD-W5BRL-XX
(5-button with
raise/lower)



RRD-W5BRLIR-XX
(5-button with
raise/lower & IR)



RRD-W6BRL-XX
(6-button with
raise/lower)



RRD-W7B-XX
(7-button)

*Includes one credit for a personalized button kit. Credit is redeemed through the Lutron Designer software.
†Wallplate sold separately.
Note: XX denotes color suffix

*Includes one credit for a personalized button kit. Credit is redeemed through the Lutron Designer software.
†Wallplate sold separately.
Note: XX denotes color suffix
Visit lutron.com for up-to-date Gloss and Satin Finish color information.

Keypads

seeTouch C-L neutral hybrid keypad†



RRD-HN1RLD-XX
(3-button, 2-button with raise/lower, dual group)



RRD-HN2RLD-XX
(2-button with raise/lower, dual group)



RRD-HN3BSRL-XX
(3-button spaced with raise/lower)



RRD-HN3S-XX
(3-button favorite scene with raise/lower)



RRD-HN4S-XX
(4-button favorite scene with raise/lower)

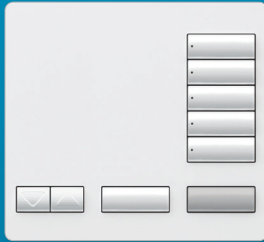


RRD-HN5BRL-XX
(5-button with raise/lower)

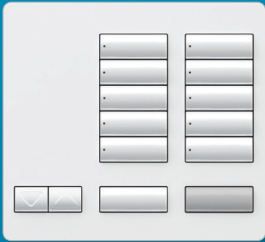


RRD-HN6BRL-XX
(6-button with raise/lower)

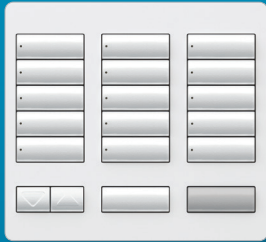
seeTouch tabletop keypads*



RR-T5RL-XX
(5-button)



RR-T10RL-XX
(10-button)



RR-T15RL-XX
(15-button)

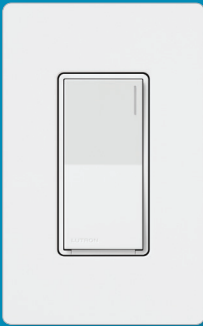
*Includes one credit for a personalized button kit. Credit is redeemed through the Lutron Designer software.
†Wallplate sold separately.
Note: XX denotes color suffix

Dimmers and switches

Sunnata†



RRST-PRO-N-XX
(RF dimmer with PRO LED+)



RRST-8ANS-XX
(RF switch)



RRST-RD-XX
(RF companion dimmer)



RRST-RS-XX
(RF companion switch)



Dimmers and switches

Maestro†



RRD-PRO-XX
(250 W LED, 500 W INC/HAL/ELV,
400 VA MLV phase selectable,
neutral optional dimmer)



RRD-6ND-XX
(150 W LED, 600 W/
VA INC/HAL/MLV
neutral dimmer)



RRD-10ND-XX
(150 W LED, 1000 W/
VA INC/HAL/MLV
neutral dimmer)



RRD-8ANS-XX
(8 A neutral switch)



RRD-8S-DV-XX
(dual-voltage 8 A switch)



RD-RD-XX
(remote dimmer)

RD-RD-277-XX
(277 V remote dimmer)



RD-RS-XX
(remote switch)

RD-RS-277-XX
(277 V remote switch)



RRD-F6AN-DV-XX
(dual-voltage 3-wire
control dimmer)



RRD-3LD-XX
(300 W lamp dimmer)

†Wallplate sold separately.
Note: XX denotes color suffix

Fan control and RF modules

Sunnata†



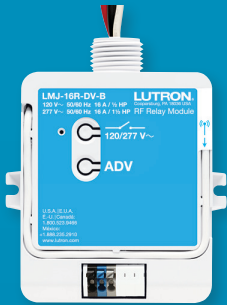
RRST-ANF-XX
(1.5 A RF ceiling fan control,
4 speeds plus off)

Maestro†

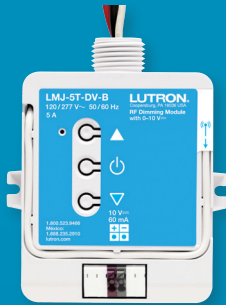


RRD-2ANF-XX
(2 A RF ceiling fan control,
4 speeds plus off)

RF Modules



LMJ-16R-DV-B
(Softswitch relay)



LMJ-5T-DV-B
(0–10 V dimming)

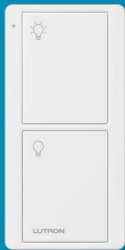


LMJ-CCO1-24-B
(contact closure output)


†Wallplate sold separately.
Note: XX denotes color suffix
Visit lutron.com for up-to-date Gloss and Satin Finish color information.

Wireless controls


Pico original remotes for lights




PJ2-2B-YXX-L01
(light icons)



PJ2-2BRL-YXX-L01
(light icons)



PJ2-3B-YXX-L01
(light icons)



PJ2-3BRL-YXX-L01
(light icons)

Pico paddle remote for lights



PJ2-P2B-GXX

Pico remotes with nightlight for lights



PJN-2B-GWH-L01
(light icons)



PJN-3BRL-GWH-L01
(light icons)

Note: LEDs shown brighter than they actually appear.

Note: Y denotes finish: “G” for Gloss or “T” for Satin Finish; XX denotes color suffix

Pico original remotes for shades



PJ2-2BRL-YXX-S01
(shade icons)



PJ2-3BRL-YXX-S01
(shade icons)



PJ2-3BRL-YXX-S02
(shade text/icons)



PJ2-3BRL-YXX-S03
(blackout text/icons)



PJ2-3BRL-YXX-S04
(sheer text/icons)



PJ2-3BRL-YXX-S05
(tilt blind text/icons)



PJ2-3BRL-YXX-S06
(skylight text/icons)



PJ2-3BRL-YXX-S07
(drapery text/icons)



PJ2-3BRL-YXX-S09
(horizontal sheer blind text/icons)



PJ2-3BRL-YXX-S10
(tilt blind icons)

Note: Y denotes finish: “G” for Gloss or “T” for Satin Finish; XX denotes color suffix

Wireless controls

Pico remotes with 4 buttons (standard text/icons)



PJ2-4B-YXX-L01
(zone control, light icons)



PJ2-4B-YXX-L31
(scene keypad, light icons)



PJ2-4B-YXX-L21
(2-group control, light icons)



PJ2-4B-YXX-L41
(4-group toggle)



PJ2-4B-YXX-LS21
(2-group, light/shade icons)



PJ2-4B-YXX-S01
(zone control, shade icons)



PJ2-4B-YXX-S21
(2-group control, shade icons)



PJ2-4B-YXX-S31
(scene keypad, shade icons)

Pico remotes with 4 buttons (custom text)



PJ2-4B-YXX-EL1
(light control with raise/lower, zone/standalone keypad)



PJ2-4B-YXX-ES1
(shade control with raise/lower, zone/standalone keypad)




PJ2-4B-YXX-EL2
(light control scene keypad only)



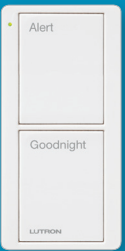
PJ2-4B-YXX-ES2
(shade control scene keypad only)

Note: Y denotes finish: “G” for Gloss or “T” for Satin Finish; XX denotes color suffix

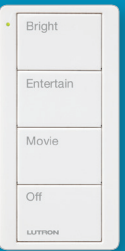
Pico scene keypads



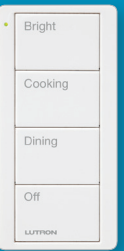
PJ2-2B-YXX-P01
(2-button keypad with Home and Away scenes)



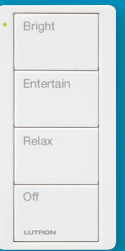
PJ2-2B-YXX-P02
(2-button keypad with Alert and Goodnight scenes)



PJ2-4B-YXX-P01
(4-button keypad with Bright, Entertain, Movie, and Off scenes)




PJ2-4B-YXX-P02
(4-button keypad with Bright, Cooking, Dining and Off scenes)



PJ2-4B-YXX-P03
(4-button keypad with Bright, Entertain, Relax, and Off scenes)

Pico smart remote for audio control



PJ2-3BRL-YXX-A02
(audio text/icons)

Easily integrate popular audio brands, such as Sonos and Bang & Olufsen, with the RadioRA 3 system.

Pico smart remote for fan control



PJ2-3BRL-YXX-F01
(fan icons)

Note: Y denotes finish: “G” for Gloss or “T” for Satin Finish; XX denotes color suffix

Pico pedestals

Pico remote pedestals



L-PED1-XX
(single pedestal)



L-PED2-XX
(double pedestal)



L-PED3-XX
(triple pedestal)

Note: Y denotes finish: “G” for Gloss or “T” for Satin Finish; XX denotes color suffix

Plug-in modules

Plug-in dimming module



RR-3PD-1-SW
(Snow White)

RR-3PD-1-MN
(Midnight)

Plug-in appliance module



RR-15APS-1-SW
(Snow White)

RR-15APS-1-MN
(Midnight)

Outdoor plug-in switch



RR-15OUT-BL

Sensors and temperature control

Radio Powr Savr wireless occupancy/vacancy sensors



LRF2-OCR2B-P-WH
(ceiling-mount)

LRF2-VCR2B-P-WH
(ceiling-mount)

LRF2-OKLB-P-WH
(corner-mount)

LRF2-VKLB-P-WH
(corner-mount)

LRF2-OWLB-P-WH
(wall-mount)

LRF2-VWLB-P-WH
(wall-mount)

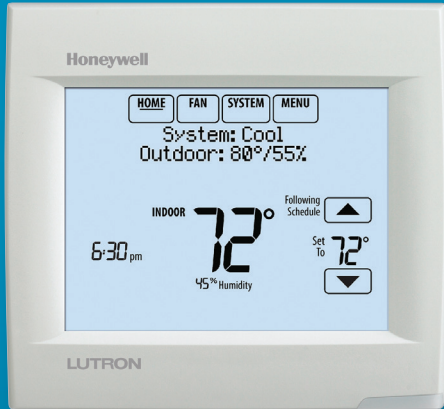
LRF2-OHLB-P-WH
(hallway)

LRF2-VHLB-P-WH
(hallway)



(top view)

Lutron wireless thermostat



L-HWLV2-WIFI

Accessories

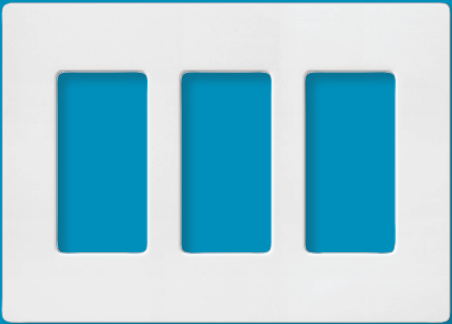
Wallplates (Gloss** and Satin†)



CW-1-XX**
SC-1-XX†



CW-2-XX**
SC-2-XX†



CW-3-XX**
SC-3-XX†



CW-4-XX**
SC-4-XX†

** Gloss color
† Satin Finish color
Visit lutron.com for up-to-date Gloss and Satin Finish color information.

Accessories

Designer accessories† (Gloss** and Satin‡)

CAR-15-XX** SCR-15-XX‡ (15A receptacle)	CARS-15-TR-XX** SCRS-15-TR-XX‡ (15A tamper-resistant receptacle)	CA-6PF-XX** SC-6PF-XX‡ (field customizable multi-port frame)	CA-PJ-XX** SC-PJ-XX‡ (single telephone jack)	CA-CJ-XX† SC-CJ-XX* (single cable jack)
SCR-20-XX† (20 A receptacle) <small>Available in Satin Finish only</small>	SCRS-20-TR-XX† (20A duplex tamper-resistant receptacle) <small>Available in Satin Finish only</small>	CAR-15-UBTR-XX** SCR-15-UBTR-XX‡ (15A dual USB tamper-resistant receptacle)	CAR-15-GFST-XX** SCR-15-GFST-XX‡ (15A GFCI tamper-resistant self-testing receptacle) <small>Available in Satin Finish only</small>	SCR-20-GFST-XX† (20A duplex tamper-resistant self-testing GFCI receptacle) <small>Available in Satin Finish only</small>
CAR-15-HDTR-XX** SCR-15-HDTR-XX‡ (15A half dimmable tamper-resistant receptacle)	CAR-20-HDTR-XX** SCR-20-HDTR-XX‡ (20A half dimmable tamper-resistant receptacle)	CAR-15-DDTR-XX** SCR-15-DDTR-XX‡ (15A dual dimmable tamper-resistant receptacle)	CAR-20-DDTR-XX** SCR-20-DDTR-XX‡ (20A dual dimmable tamper-resistant receptacle)	

** Gloss color
‡ Satin Finish color
† Wallplate sold separately.
Note: XX denotes color suffix

Shades

Exposed roller shades#	Roller shades#	Honeycomb shades#
Horizontal sheer blinds	Drapery track systems	Roman shade systems#
Wood blinds#	Kirbé vertical drapery system	Tensioned shades

Nearly all of Lutron’s smart shade brands can be added to a RadioRA 3 system.

*Battery-powered option available
For shades ordering information, call 1.800.446.1503.



The Lutron logo, Lutron, C-L, Kirbé, Lumaris, Maestro, Pico, Radio Powr Savr, RadioRA 3, Sunnata, and seeTouch are trademarks or registered trademarks of Lutron Electronics Co., Inc., in the U.S. and/or other countries.

lutron.com/radiora3

Lutron Electronics Co., Inc., 7200 Suter Road, Coopersburg, PA 18036-1299

Customer Assistance

Online: lutron.com/help | Email: support@lutron.com | Phone: 1.844.LUTRON1 (588.7661) — includes 24/7 technical support

© 10/2024 Lutron Electronics Co., Inc. | P/N 367-2892 REV F