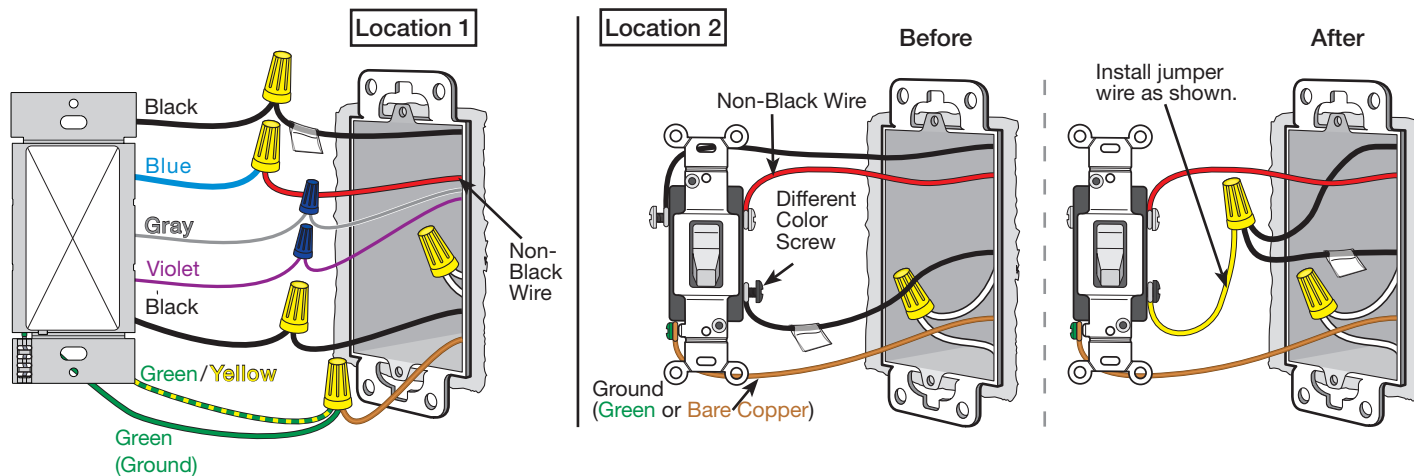


Image #61 — Dimmer with Two Black Wires, One Blue Wire, One Violet Wire and One Gray Wire in a 3-Way Application with a Mechanical Switch

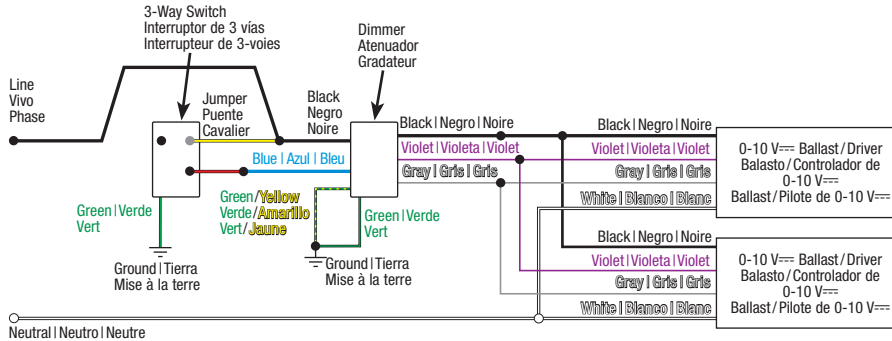


Continued on next page...

Not sure this is the correct wiring for your Lutron product?

For more information, refer to the Lutron [DIY Wiring Tool](#) or visit the [Lutron Support Center](#).

**Image #61 — Dimmer with Two Black Wires, One Blue Wire, One Violet Wire and One Gray Wire in a 3-Way Application with a Mechanical Switch (continued)**



Not sure this is the correct wiring for your Lutron product?

For more information, refer to the Lutron [DIY Wiring Tool](#) or visit the [Lutron Support Center](#).