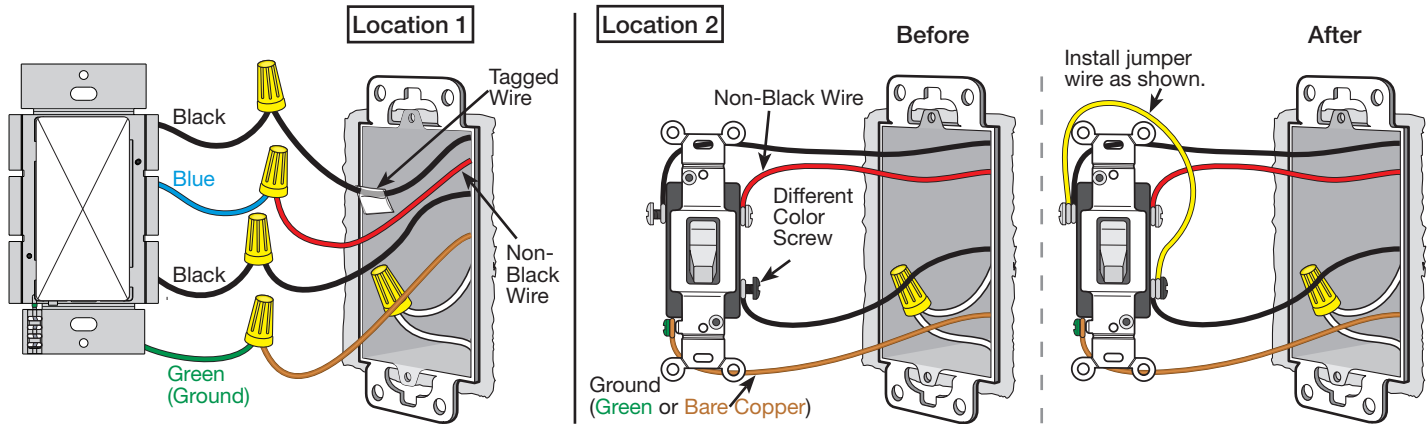


Image #13 — Switch with Two Black Wires and One Blue Wire in a 3-Way Application with a Mechanical Switch



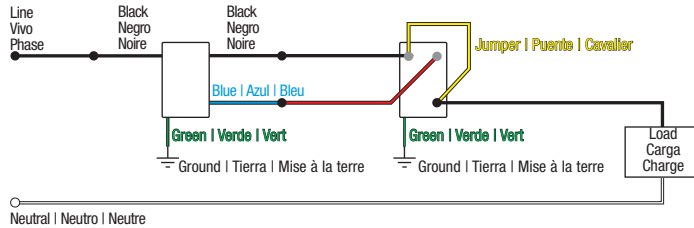
Note: If using a sensor switch, both ground wires must be connected for the sensor to operate.

Continued on next page...

Not sure this is the correct wiring for your Lutron product?

For more information, refer to the Lutron [DIY Wiring Tool](#) or visit the [Lutron Support Center](#).

Image #13 — Switch with Two Black Wires and One Blue Wire in a 3-Way Application with a Mechanical Switch (continued)



Not sure this is the correct wiring for your Lutron product?

For more information, refer to the Lutron [DIY Wiring Tool](#) or visit the [Lutron Support Center](#).