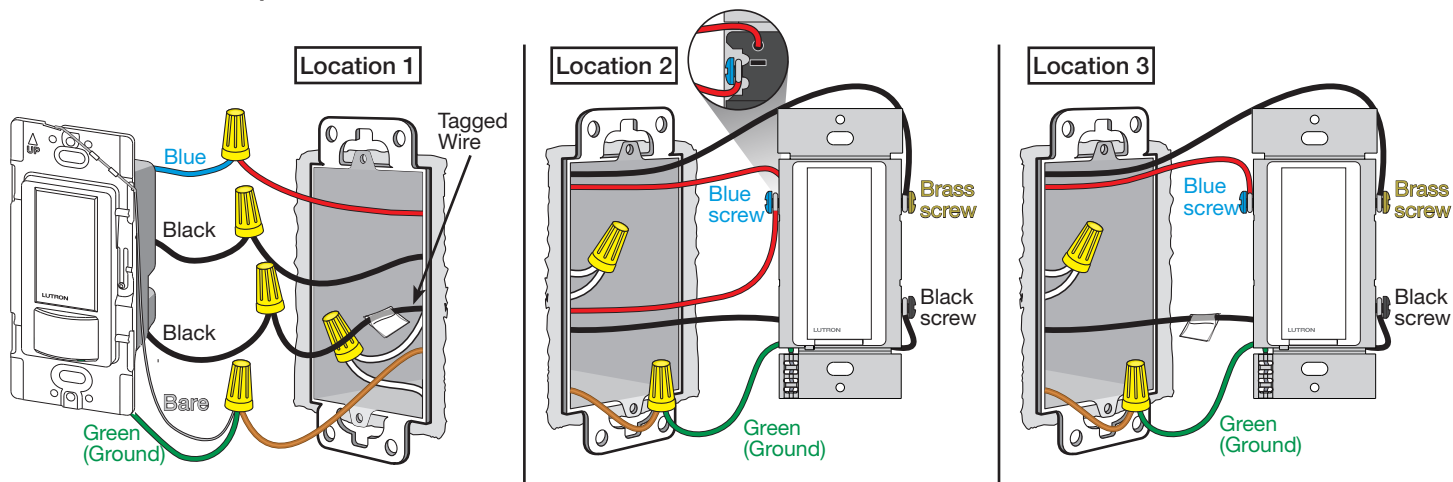


Image #16 — Sensor Switch with Two Black Wires and One Blue Wire in a 4-Way Application with Two Companion Switches



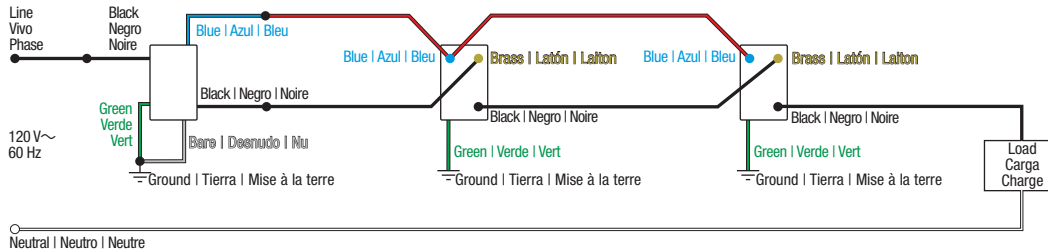
Note: Sensor switch must be grounded for the sensor to operate.

Continued on next page...

Not sure this is the correct wiring for your Lutron product?

For more information, refer to the Lutron [DIY Wiring Tool](#) or visit the [Lutron Support Center](#).

Image #16 — Sensor Switch with Two Black Wires and One Blue Wire in a 4-Way Application with Two Companion Switches (continued)



Not sure this is the correct wiring for your Lutron product?

For more information, refer to the Lutron [DIY Wiring Tool](#) or visit the [Lutron Support Center](#).