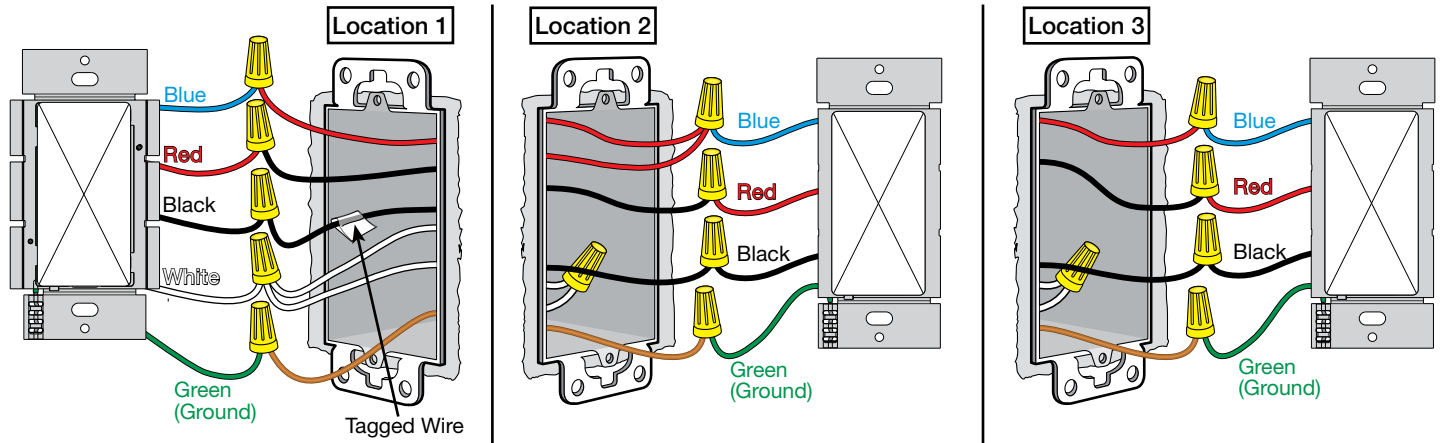


Image #87 — Caséta Claro Smart Switch with One Black, One Red, One Blue, and One White wire in a 4-Way Application with Two Companion Controls

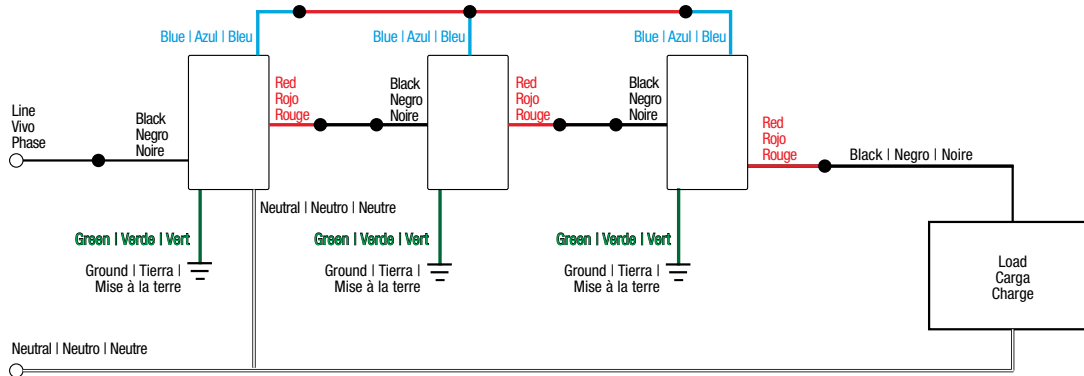


Continued on next page...

Not sure this is the correct wiring for your Lutron product?

For more information, refer to the Lutron [DIY Wiring Tool](#) or visit the [Lutron Support Center](#).

Image #87 — Caséta Claro Smart Switch with One Black, One Red, One Blue, and One White wire in a 4-Way Application with Two Companion Controls (continued)



Not sure this is the correct wiring for your Lutron product?

For more information, refer to the Lutron [DIY Wiring Tool](#) or visit the [Lutron Support Center](#).