



Office Space

Overview

The Benbow Group Ltd., Newton Abbot, UK

Cabinetmaker renovates offices with lighting to create more productive environment.

“The installation was so much faster with wireless.
It really reduced installation time.”

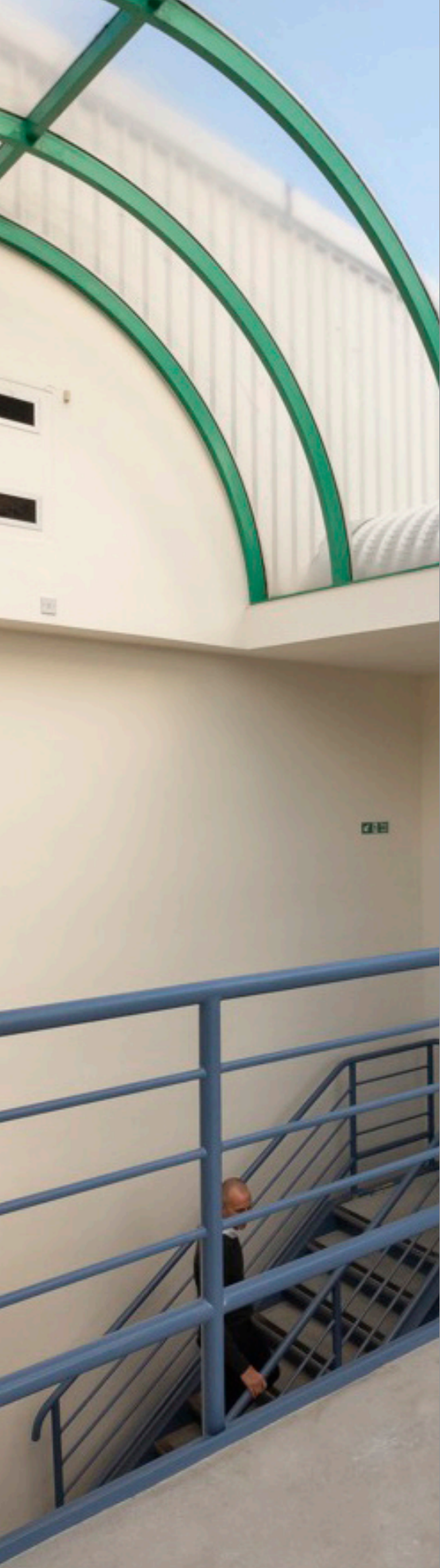
— John Bailey, Director, Benbow Group

Introduction

The Benbow Group’s meticulous work is understated yet impossible to ignore: The prestigious joinery and metalworker firm creates custom-made cabinets and display cases for premium watch brands, notable High Street stores, and museums.

The company’s new manufacturing facility came with an attached office block, giving Benbow the opportunity to retrofit the offices with the latest wireless lighting technology. The purpose was to create a productive and worker-friendly workplace environment with energy-efficient, easy-to-use controls — a place to truly support Benbow’s highly trained workers, who spend their days drawing up plans and creating refined cabinetry. At the same time, the design needed to be intuitive to use, easy to install, and budget-friendly.





The Challenge

Benbow's Director, John Bailey, had planned to approve a very basic lighting scheme. But upon being introduced to Lutron at a seminar hosted by the UK's National Association of Shop Fitters, he decided to pursue a design that provided all the values of quality lighting and personal control.

"It was timely that we went there as we were about to change all the lighting in our offices to LED," Bailey recalls. "Through going into Lutron in London, I saw the things that could go wrong with not having dimmable or controllable lights. We've got some very precious staff and we didn't want to lose them by moving them into a new facility and finding out the lighting wasn't good."

The solution needed to include not only controls capable of controlling LEDs, but also occupancy and vacancy sensors, timeclock programming, remotes, and daylight harvesting. Vive, with its simple and scalable attributes, fit the bill.

The Solution

Sherwoods, Benbow's contractor, hadn't used Vive before, but project manager Ben Arnold quickly grasped its benefits. He was familiar with wireless systems on a variety of hardware, such as closed-circuit cameras and security systems, but using a wireless protocol for such a large system of lighting controls was different. And installation? He had his concerns.

"They all appreciate having much better lighting and lighting control."

—John Bailey,
Director, Benbow Group

Lighting controls were installed throughout the building, from offices to stairwells.

"I was curious about using a wireless system," he says. The installation, he added, turned out to be as easy as promised. "Until we got the system up and running I never thought it would be that easy to set up."

Benbow opted for a variety of Vive controls. The corridors feature occupancy sensors, which turn the lights on when people are present. Pico remotes allow for personal control in the smaller offices, and vacancy sensors shut the lights off when their workers depart. Daylight sensors were also installed at the glass-fronted main entrance, where they've proven a beneficial addition, says Arnold.

There was one hitch: an unforeseen programming issue. Lutron was "fantastic" in helping to address this issue quickly, says Arnold, so installers did not lose more valuable time.

Results

The Benbow staff moved into the new building in the autumn. Bailey, the Director, is very pleased with the early returns.

"At the old premises we had old fluorescent lighting, and we've now gone to LED, along with dimmability and occupancy and vacancy sensors," he says. "So we're expecting some pretty huge savings."

In addition, with the Vive app, the Benbow facilities team now are able to change settings on their own, such as reducing the length of time-outs, without having to pay a manufacturer.

More important, though, is the reaction from the employees. As Bailey noted, one of the primary reasons for going with Vive and the control it offers was the chance to provide the right environment for his workers. The Vive installation has made that possible, he says.



The corridors at Benbow's offices feature wireless sensors, so the lights go on and off based on the presence of people in the area.

"The installation turned out to be as easy as promised. Until we got the system up and running I never thought it would be that easy to set up."

— Ben Arnold,
Project Manager

Daylight sensors at the glass-fronted main entrance have been a beneficial addition.





Lighting control was essential in supporting Benbow's highly trained staff.

"They all appreciate having much better lighting and lighting control," he says. "If I had put the wrong lighting in there and it wasn't controllable, I'd run the risk of losing staff over not having the right work environment." At Benbow's request, more Pico remotes are being brought in — offering more personal control.

Overall, Sherwoods' Arnold says, the entire process was practically seamless.

"The installation was so much faster with wireless," he says. "It really reduced installation time."

For his part, Bailey is glad Lutron proved to have the solution he was looking for.

"We're very pleased we attended that seminar in the first place, otherwise we would have made a pretty big mistake, I think. Now we feel we have the best we have, and we're a bit future-proofed on the whole thing," he says. "It was absolutely a critical move, getting Lutron involved."

Electrical Contractor

Sherwoods

Provider

Lutron Electronics

Solution

Vive

Photos

Earl Smith

Visit lutron.com/vive-europe

European headquarters:
Lutron EA Ltd.,
4th Floor, 52 Leadenhall Street,
London, EC3A 2EB, UK

European Experience Centre
4th Floor, 125 Finsbury Pavement,
London EC2A 1NQ, UK

Free phone (from the UK): 0800 282 107
Tel: +44 (0) 207 702 0657



©01/2020 Lutron Electronics Co., Inc. | P/N 368-5623/EA REV A

The Lutron logo, Lutron, Pico, and Vive are trademarks or registered trademarks of Lutron Electronics Co., Inc., in the U.S. and/or other countries.