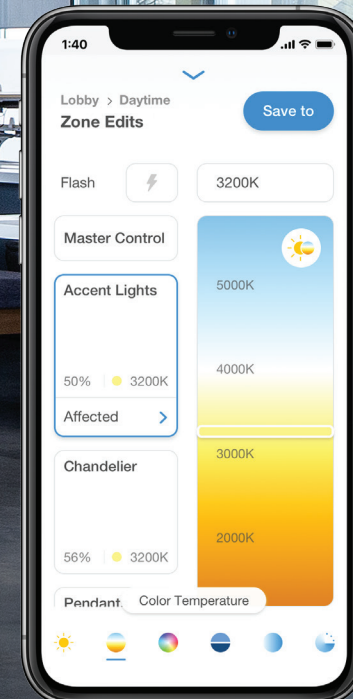
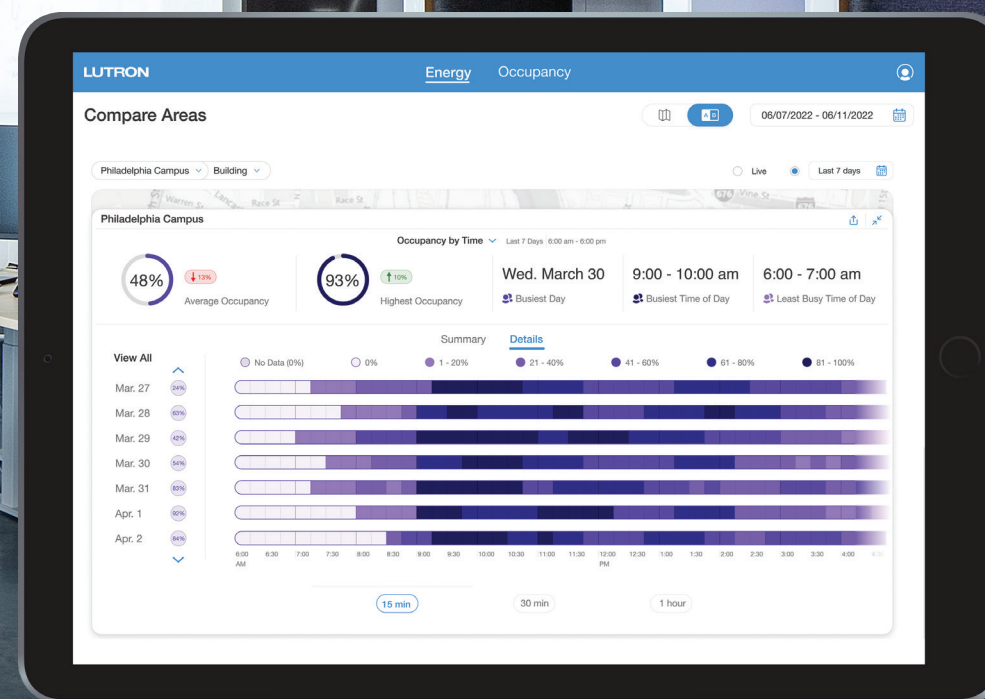


# Athena

The dynamic lighting control system for smart buildings and human-centric experiences

- **Flexible, simple, all-in-one solution** to control any light source with intelligent blinds
- Design without compromise — use **any fixture** you like and **all load types** in a single system
- **Cloud connectivity** keeps your system updated, and adds new features and value over time



 LUTRON



# Athena

From offices and hotels, to galleries and museums, create the perfect atmosphere no matter the application.

## Workplace

Support workplace **well-being** with comfortable, natural light. Stay **flexible** with agile solutions that evolve with changing business needs.



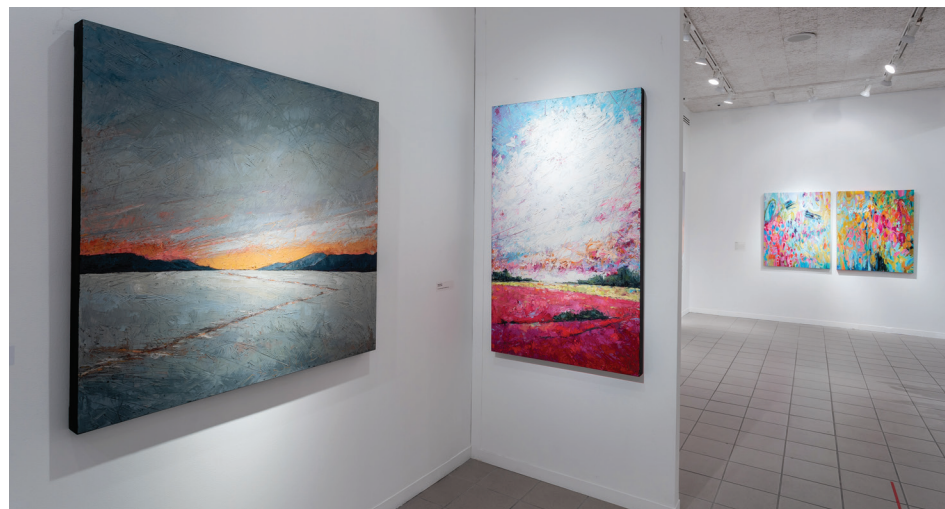
## Retail

Show **merchandise in its best light** with dynamic light control of both intensity and colour temperature. Create **visual interest** by utilising the fixture selection of your choice, all controlled by one system.



## Galleries and museums

Show art in historically accurate light, or enhance with colour temperature. Easily **change zones and scenes** as exhibits rotate.



## Hotels

Create a **luxurious space** where guests want to spend time – and money. With the easy-to-use app, it's **simple for staff** to create memorable experiences on property and quickly adjust lighting for events.



## Restaurant

**Nurture a mood** with deep dimming and dynamic colour temperature. Enhance the **appearance of food** and décor, as menus and seasons change.



## Self care

Support an **immersive sensory experience** with dynamic light. **Customisable studios and treatment rooms** for a client, a service, or your brand.



# Athena

All-in-one solution with a range of options and aesthetics.

## CAPABILITIES

### Lutron dashboard

- Visualise data and take advantage of operational insights with advanced space utilisation, energy reporting, and more
- Cloud connectivity ensures your system is always up to date with the latest features

### Lutron app

- Easily adjust the settings of your system thanks to our simple-to-use app—available on iOS and Android. From intensity and colour temperature to fade times and schedules.

### Flexibility

- Easily adjust the look and feel of any space by simply recalling a pre-programmed scene
- Change the settings of any scene with our easy Save To feature directly from the app

### Scalability

- From a single room to multiple campuses, Athena can adjust to the scale of the project that you need

## LIGHTS. BLINDS. CONTROLS.

### Range of controls – touchscreen, keypads, personal, and touchless

- Touchscreen, keypads and flexible wireless remotes and sensors.



### Lights and blinds work together seamlessly

- Preserve view, mitigate glare, ultra-quiet operation, hembar alignment, broad fabric selection



## BACK OF HOUSE

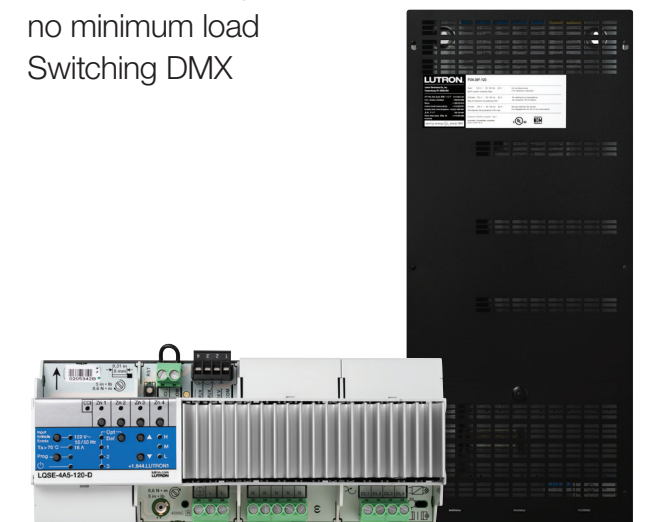
### Right-sized hub – the brains of the system

- Small and large spaces
- Built for the cloud
- Automatic software upgrades



### Any source, fixture, load type, and protocol

- DALI-2 DALI Type 8 tunable white
- 0-10 Phase Adaptive with no minimum load
- Switching DMX



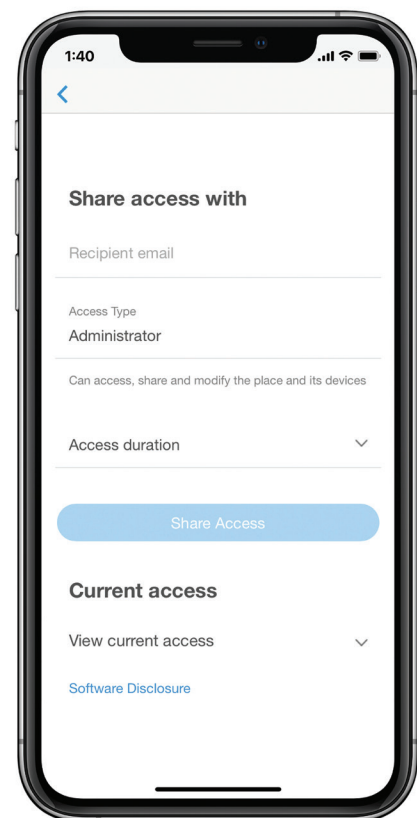
# Athena

Sophisticated simplicity in the palm of your hands.

## Lutron app

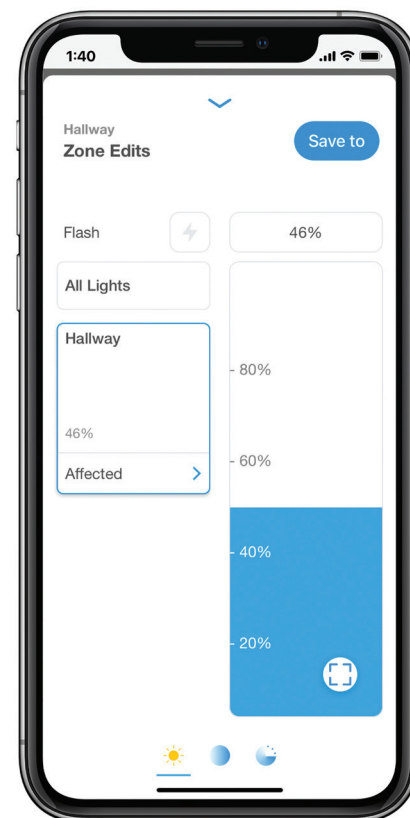
- Change scenes and zones – including dimming and colour temperature – from a simple app
- Complete aim and focus visits on your own, from your phone, as you walk the space
- Adapt your space over time for short-term events and long-term updates
- Available on Apple and Android devices

### Manage access



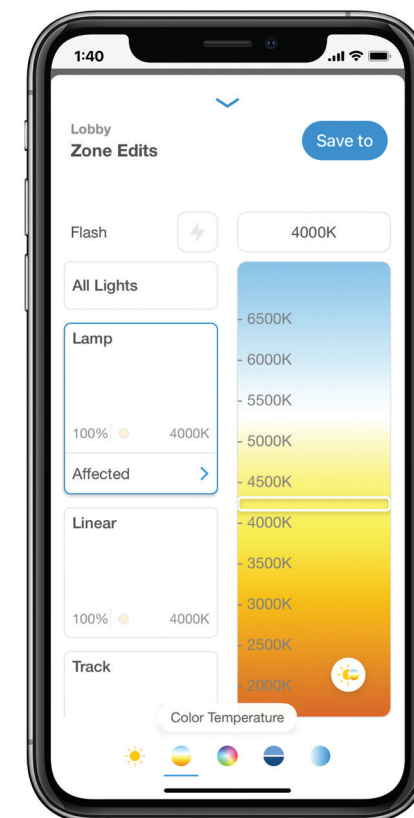
Manage access to define who can change lighting.

### Control lighting - dimming



Update the light level with a simple-to-use slider.

### Control lighting - colour temperature



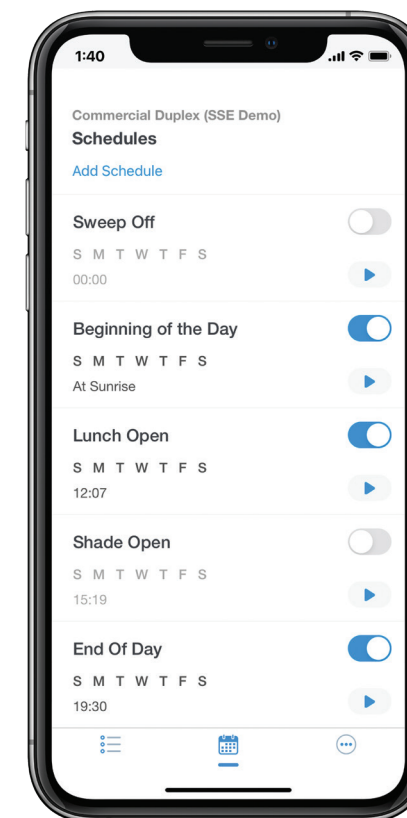
Change the colour temperature of DALI Type 8 Tc fixtures.

### Enable load shed



Easily activate load shed to save energy.

### Set schedules



Schedule lighting to turn on, off, or dim at certain times on specific days for customisable time ranges.

### Edit scenes



As the space changes, adjust the light levels and names of the scenes and zones.



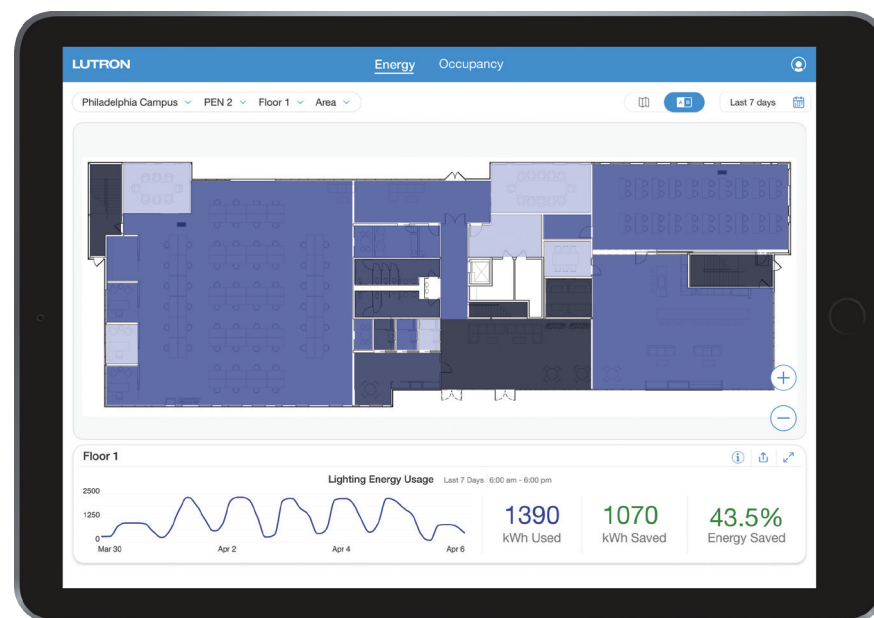
# Athena

Manage your system at scale with actionable insights from data in the cloud.

## Lutron dashboard

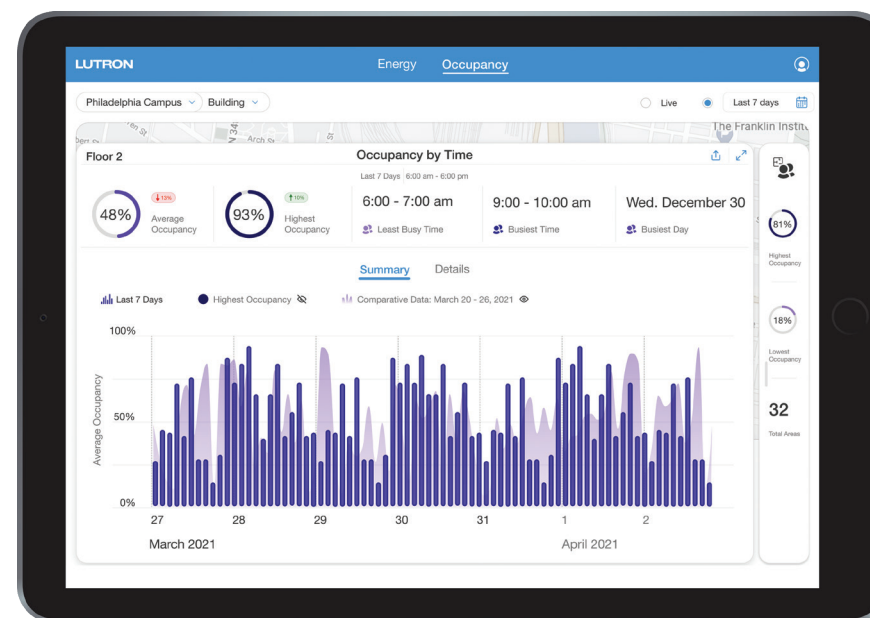
- Review energy usage and space utilisation reports for customisable time ranges
- Monitor multiple buildings, or individual spaces, and everything in between
- Intuitive floor-plan view helps you quickly navigate spaces
- Export data to use for custom reporting
- Available on any major browser

## Save energy



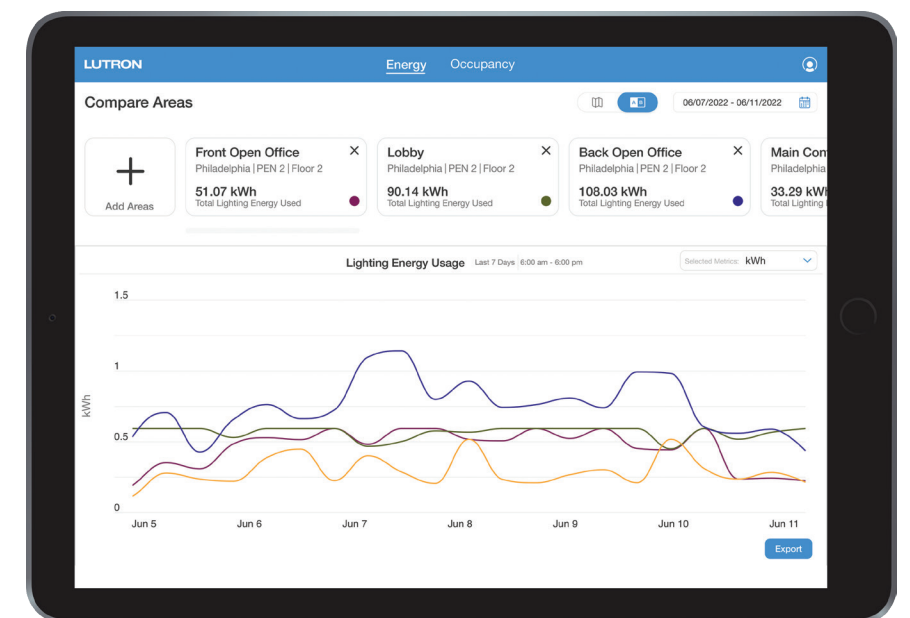
See how much energy spaces are consuming over time to find new opportunities for savings.

## Maximise space usage



Manage your real estate and make space-planning decisions with space utilisation reports.

## Compare space performance



Evaluate energy usage of multiple spaces over time to see how they perform comparatively.

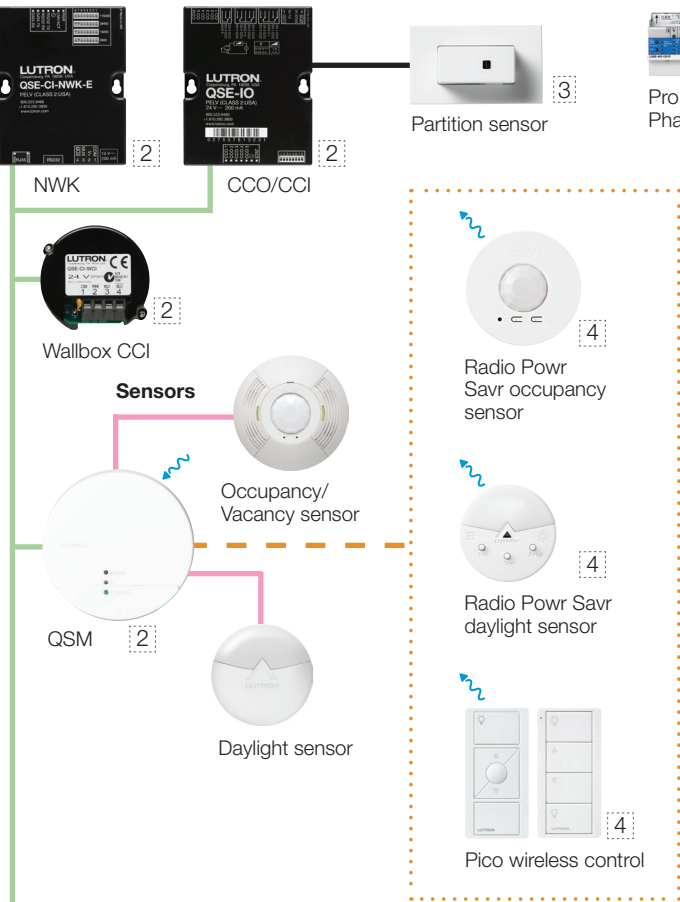


# Athena System architecture

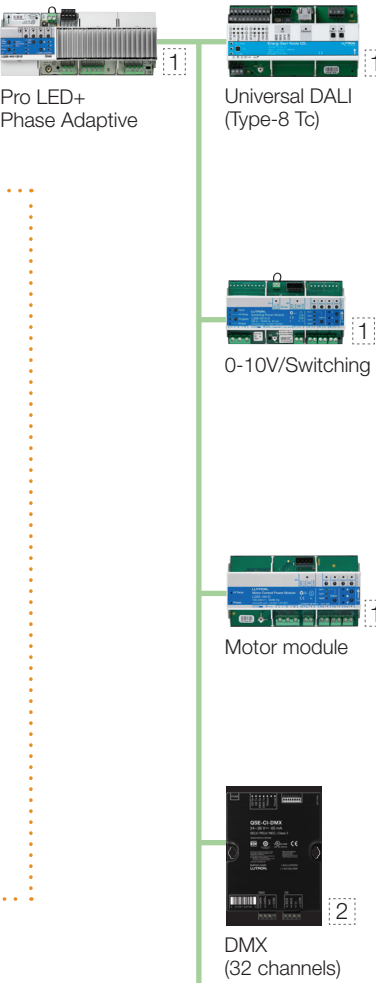
## QS wired link

- **QP5-2L and QP5-4L:**  
99 QS devices per link  
512 switchlegs\* per link
- **QP6-1L and QP5-1L:**  
25 QS devices per link  
256 switchlegs\* per link
- 610 m maximum wire length (consult technical specs for other applicable rules)
- Free-wire topology (star, daisy chain, home run, etc.)
- Standard Lutron 4 conductor cable†

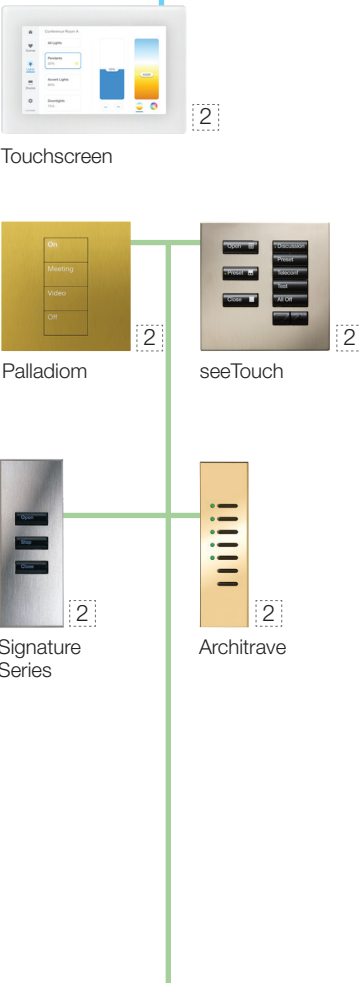
### Interfaces - AV & contact closure



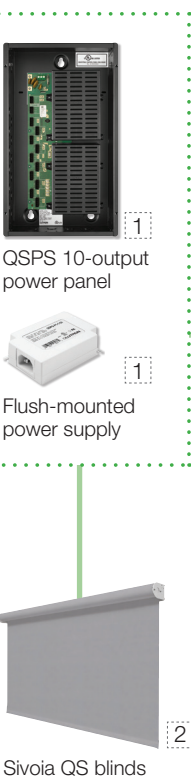
### Distributed load control



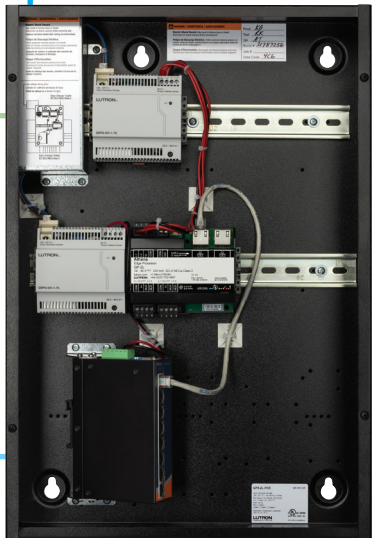
### Keypads



### Blinds



No local server or PC required



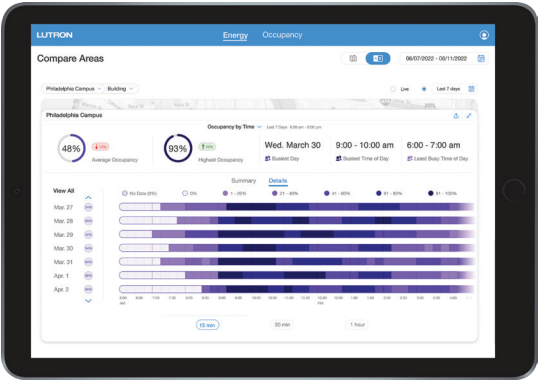
Athena processor hub - QP5-1L-POE 1



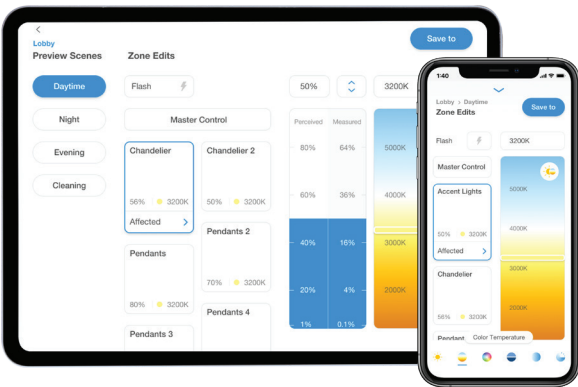
Lutron Field Service,  
connection needed  
for system startup

## Software

### Lutron Dashboard



### Lutron App



Lutron Dashboard and Lutron App communicate with the Athena processor hub via the cloud

### Athena system capacities

- 16 Athena processors (max per database)
- 100 Athena databases per place
- 1600 Athena processors per place

\* A switchleg is the smallest controllable point on any product - a single CCO, a zone of 0-10V, or a single DALI address for a fixture.

### Wiring

- QS wired link\***
- QSM Wired Sensor link**
- Clear Connect link**
- System Ethernet link**  
Ethernet connection between processors  
gateways required for system startup and function

†Pin-out: pin 1 - common, pin 2 - VDC, pin 3 - MUX, pin 4 - MUX

- QS-CBL-LSZH (runs up to 153 m) one pair: 1.0 mm<sup>2</sup>, one pair: 0.5 mm<sup>2</sup> twisted/shielded
- GRX-CBL-346S-500 (runs up to 153 m) one pair: 1.0 mm<sup>2</sup>, one pair: 0.5 mm<sup>2</sup> twisted/shielded
- GRX-CBL-46L (runs up to 610 m) one pair: 4.0 mm<sup>2</sup>, one pair: 0.5 mm<sup>2</sup> twisted shielded
- RS 485, 24 - 35VDC powered

The wire gauge required for blind power conductors is dependent on blind size and number, wire run length, and power supply type being used. Consult technical specifications of blind equipment for details.

### Power

- 1 220-240VAC
- 2 Low voltage 24-35 VDC
- 3 Plug-in transformer
- 4 Battery powered

