



INTELI EDUCATIONAL COMPLEX

**Lighting System Designed for
an Agile, Modern Education**

Sao Paulo, Brazil

AN EDUCATIONAL COMPLEX SUITED TO THIS CENTURY

The Institute of Technology and Leadership (Inteli) is the first project-based tech college in Brazil. It's high-profile, highly publicized mission is to offer the most cutting-edge technology education in the country. To accomplish this feat, the design team at PITA Architecture upended the standard approach to learning environments by embracing the latest technology and catering to visual comfort. Getting the lighting right was critical in achieving these design goals.

*"The design of our educational spaces hasn't kept pace with technology. Our goal was to create an **educational complex suited to this century**"*

—Heloisa de Santis, PITA Architecture





ACHIEVING AGILE DESIGN IN AN EDUCATIONAL SETTING

In crafting Intel, the design team applied elements of the Agile Manifesto often adopted in leading technology company cultures. This revolutionary approach begins by defining clear objectives to ensure the right products and systems are selected.

Lighting System Design Goals:

- Eliminate the front and back of the classroom.
- Accommodate whiteboards on every wall and the use of several screens without glare or hot spots.
- Provide even, uniform lighting for every student.
- Provide flexibility in classrooms and common areas to match needs of different visual tasks.
- Control RGB lighting to develop decorative themes throughout interior.
- Systems must be easy to use and understand.

Choosing the Right Lighting Control System

Athena is an architectural-grade commercial lighting control solution that serves as a powerful tool for creating these next-level learning environments. The cornerstones of this advanced system are its simplicity and its flexibility. Architects and lighting designers around the globe — from the U.S., to Europe, the Middle East and Latin America — use Athena to create various lighting scenes that can be adjusted with a single button press.

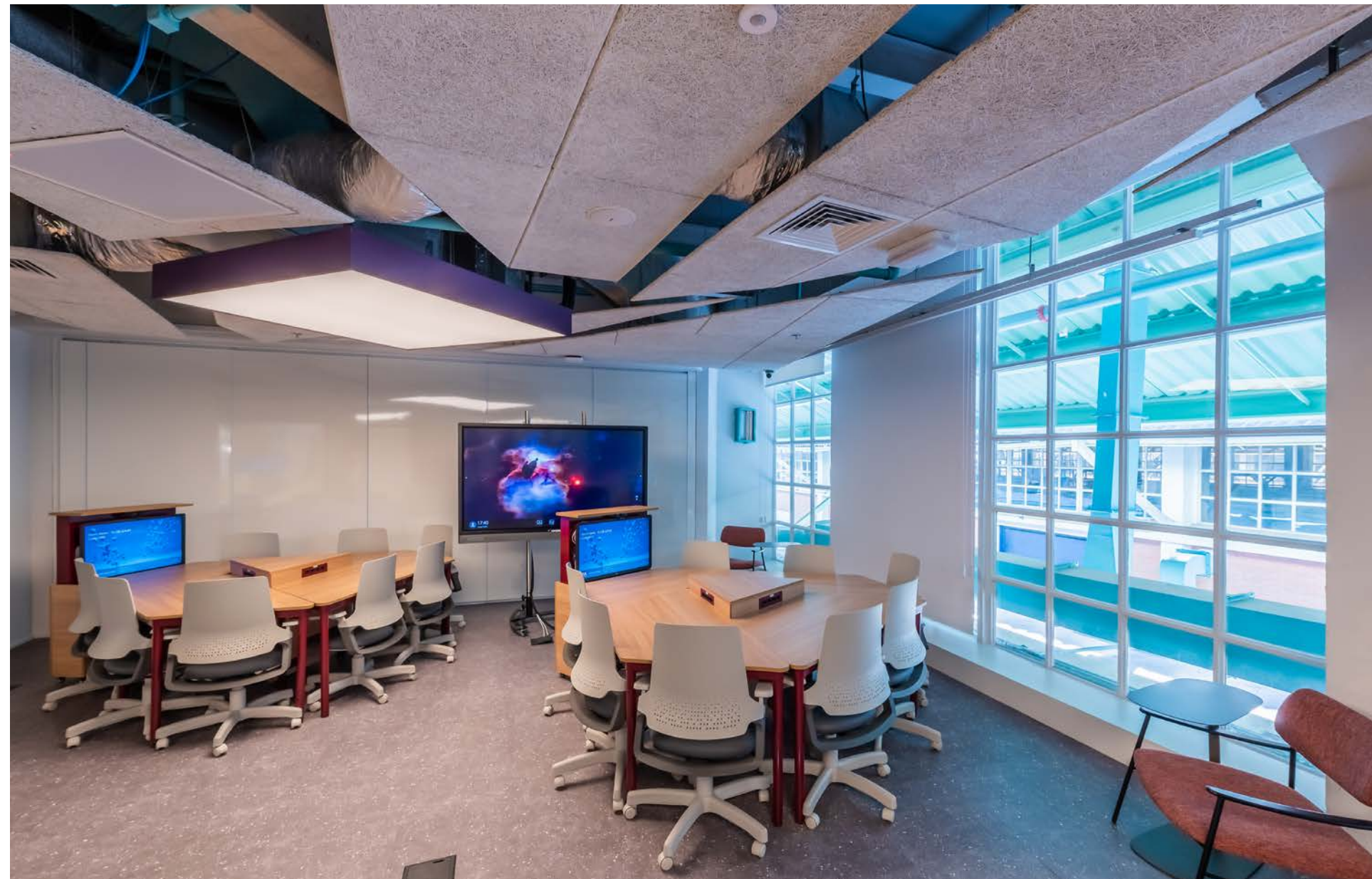
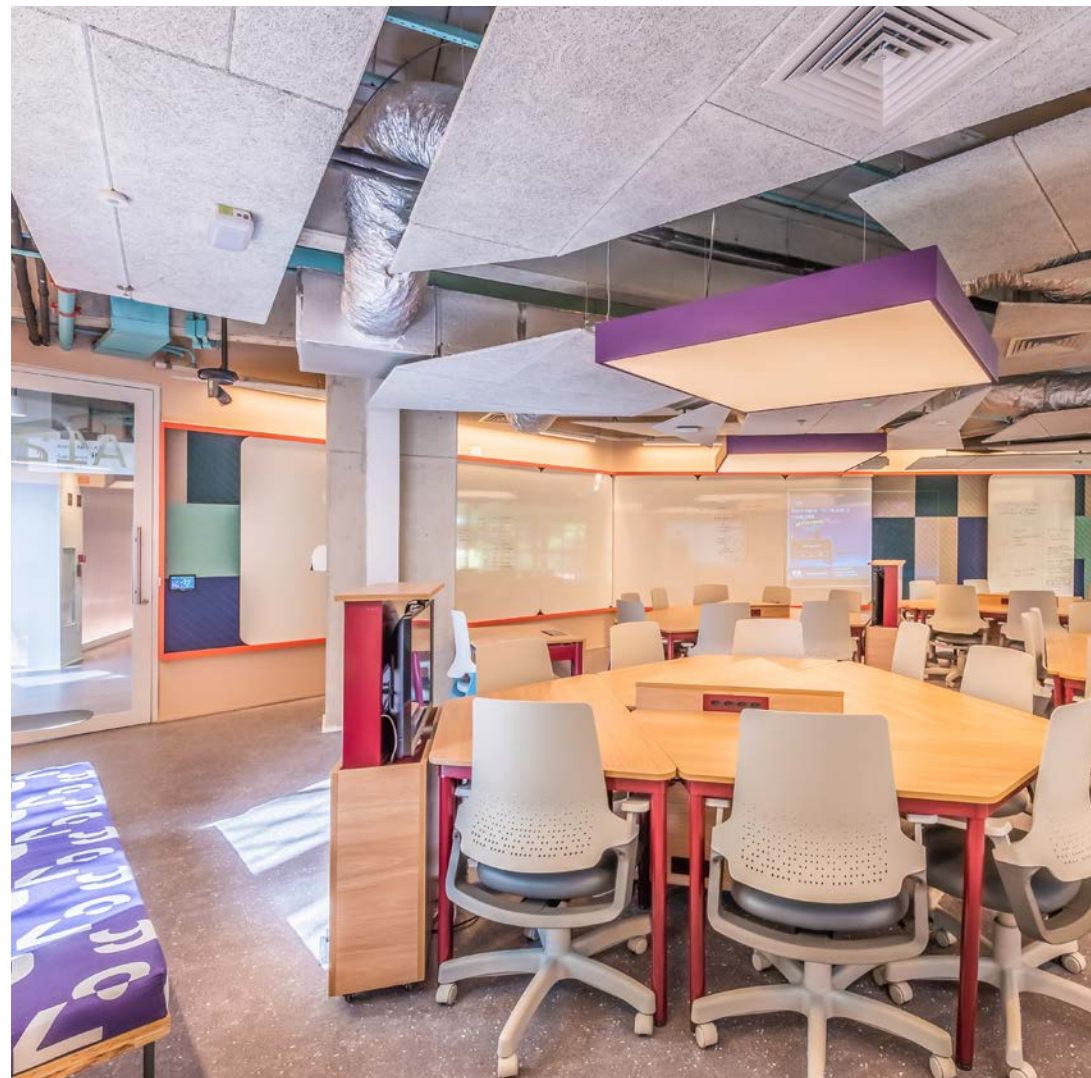
*“We knew that **the Athena system was really flexible and so simple that anyone could use it.***

In the end, it was the perfect choice for the project.”

—Fernanda Tendolini S.H., PITA Architecture

CLASSROOMS WITH GREAT VIEWS FROM EVERY ANGLE

Inteli classrooms are pentagon-shaped and organized without a clear front or back. They host a whiteboard on every wall and retractable screens at every table. Wireless Pico remotes make it easy for teachers to turn overhead lights off and raise/lower perimeter lighting, so every instructional surface is easy to see.



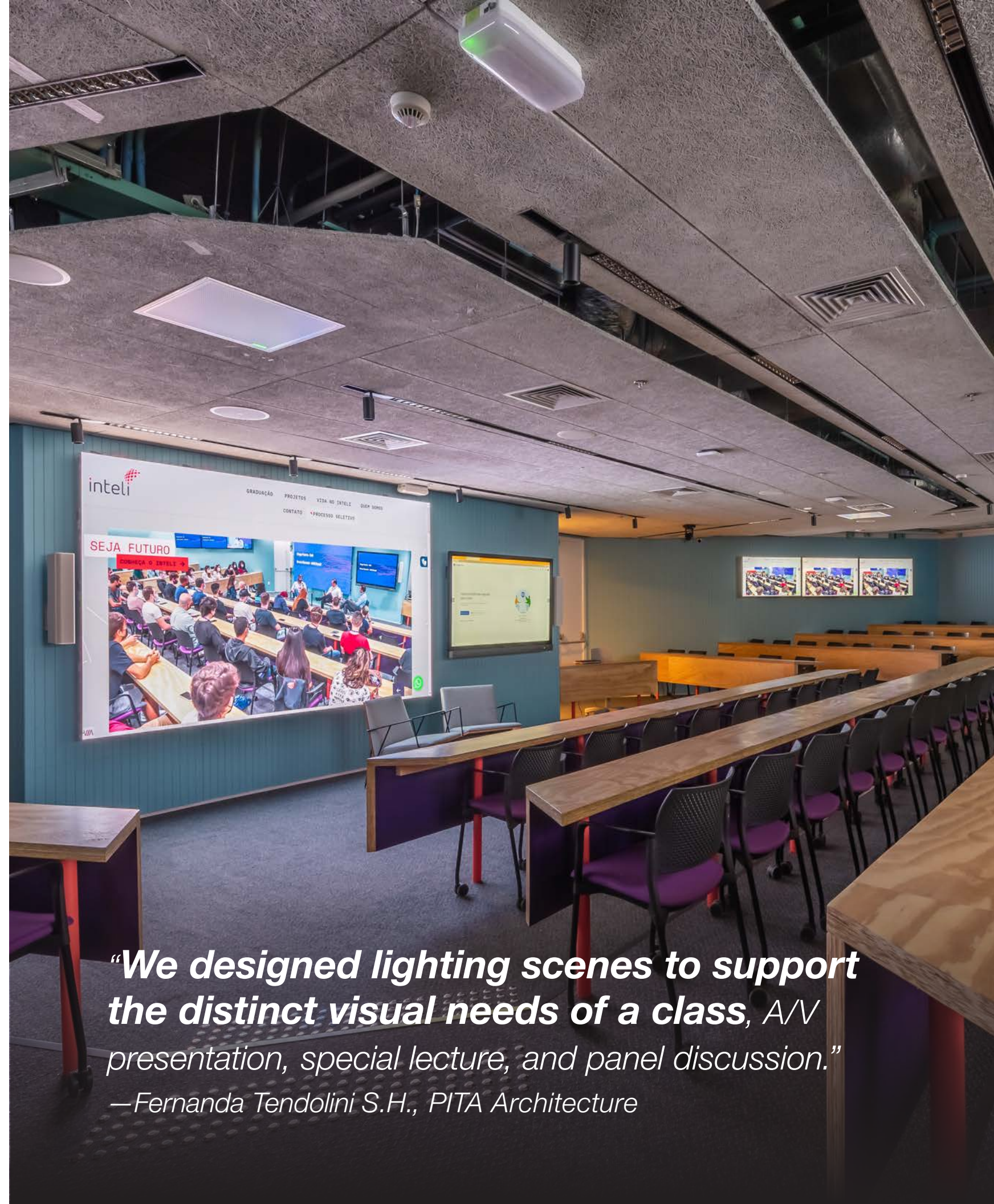
“The wireless nature of the Pico remotes gave us a huge advantage during this renovation. We avoided pulling wires through these old factory walls, which saved time and frustration.”

—Fernanda Tendolini S.H., PITA Architecture

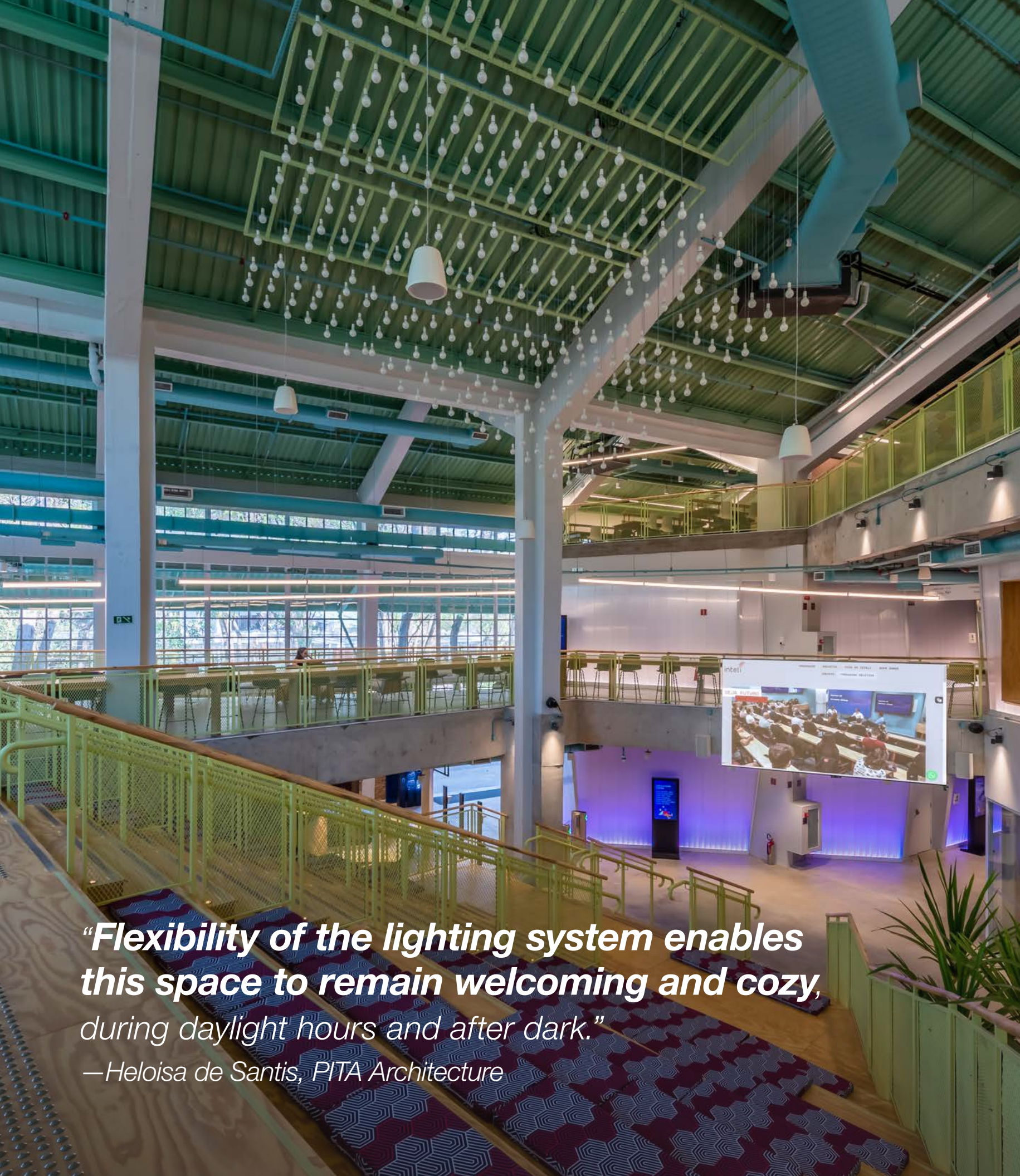


ATMOSPHERES FOR DAILY CLASS AND DISTINGUISHED LECTURES

The auditorium is used for daily classes and special guest lectures. The design team developed a rich and flexible visual environment with layers of dimmable lighting. The Athena lighting control system coordinates everything, so that a simple button press makes the space perfect for every lesson and lecture.

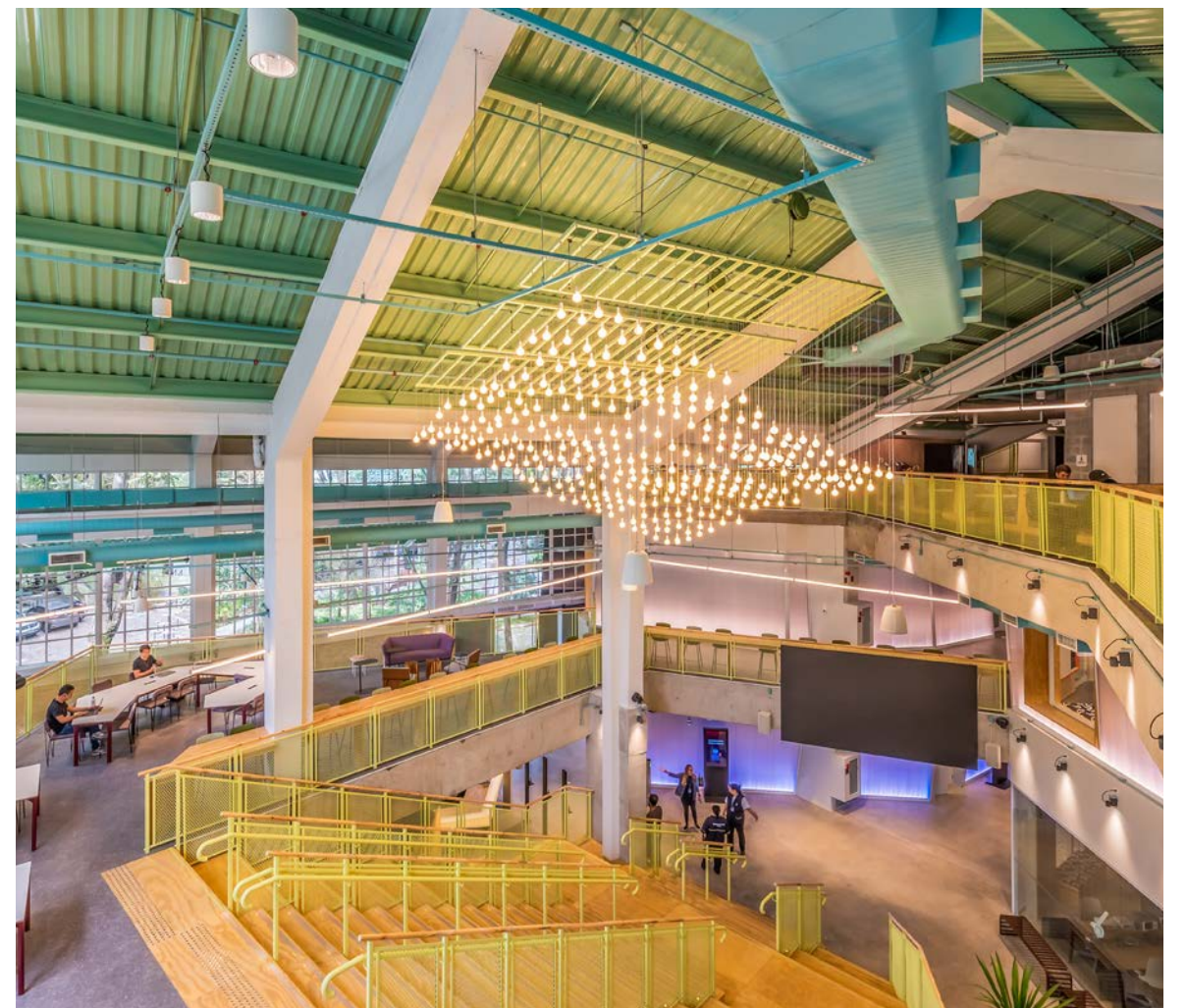


“We designed lighting scenes to support the distinct visual needs of a class, A/V presentation, special lecture, and panel discussion.”
—Fernanda Tendolini S.H., PITA Architecture



“Flexibility of the lighting system enables this space to remain welcoming and cozy, during daylight hours and after dark.”

—Heloisa de Santis, PITA Architecture

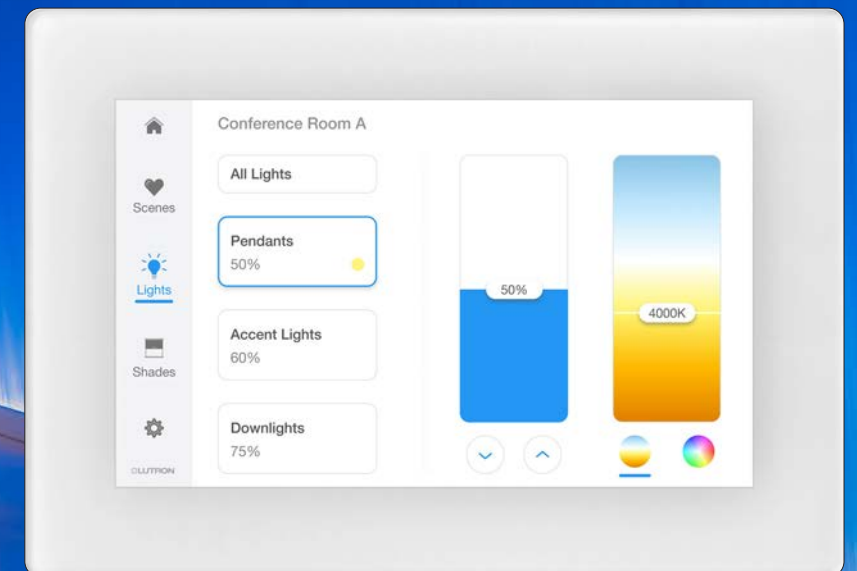


COMMON AREA WITH UNCOMMON CONTROL

The general assembly area at the heart of the school features a large bleacher installation where students gather day and night. The luminaires are organized into several on/off zones and orchestrated by Athena, so that lighting levels always support the way the area is being used, any time of day.

CREATE EXCITEMENT AND AWARENESS WITH RGB THEMES

The interior walls that flank the auditorium have an integrated RGB lighting element. Staff use the Athena touchscreen to change the color and intensity of these lights. This pop of color creates excitement around an event or speaker and raises awareness for certain causes.



*“Intel wanted to **create dramatic moments with RGB lighting control**, but they needed an RGB control system that was easy to understand. The Athena touchscreen checked both boxes.”*

—Fernanda Tendolini S.H., PITA Architecture



DESIGNING FOR A CUTTING-EDGE EDUCATION

The result of this extraordinary design approach? The technology supports the preferences of the incredible teaching staff. Every corner of this complex is crafted to promote curiosity, collaboration, and communication. Intel students are getting a cutting-edge education.

*“We applied a unique design strategy to this place. It was a risk. We’ve learned that the **students are studying throughout the building and staying longer in the classrooms and the teachers are happy. The design—it’s working.**”*

—Heloisa de Santis, PITA Architecture

Architects: Pitá Arquitetura

Fernanda Tendolini, Head of Lighting Design, PITA Architecture

Design manager Heloisa de Santis, Design Manager, PITA Architecture

Area: 9730 m²

Year: 2022

Photographs: Maurício Moreno



© 10/2022 Lutron Electronics Co., Inc. P/N 368-6340 REV A