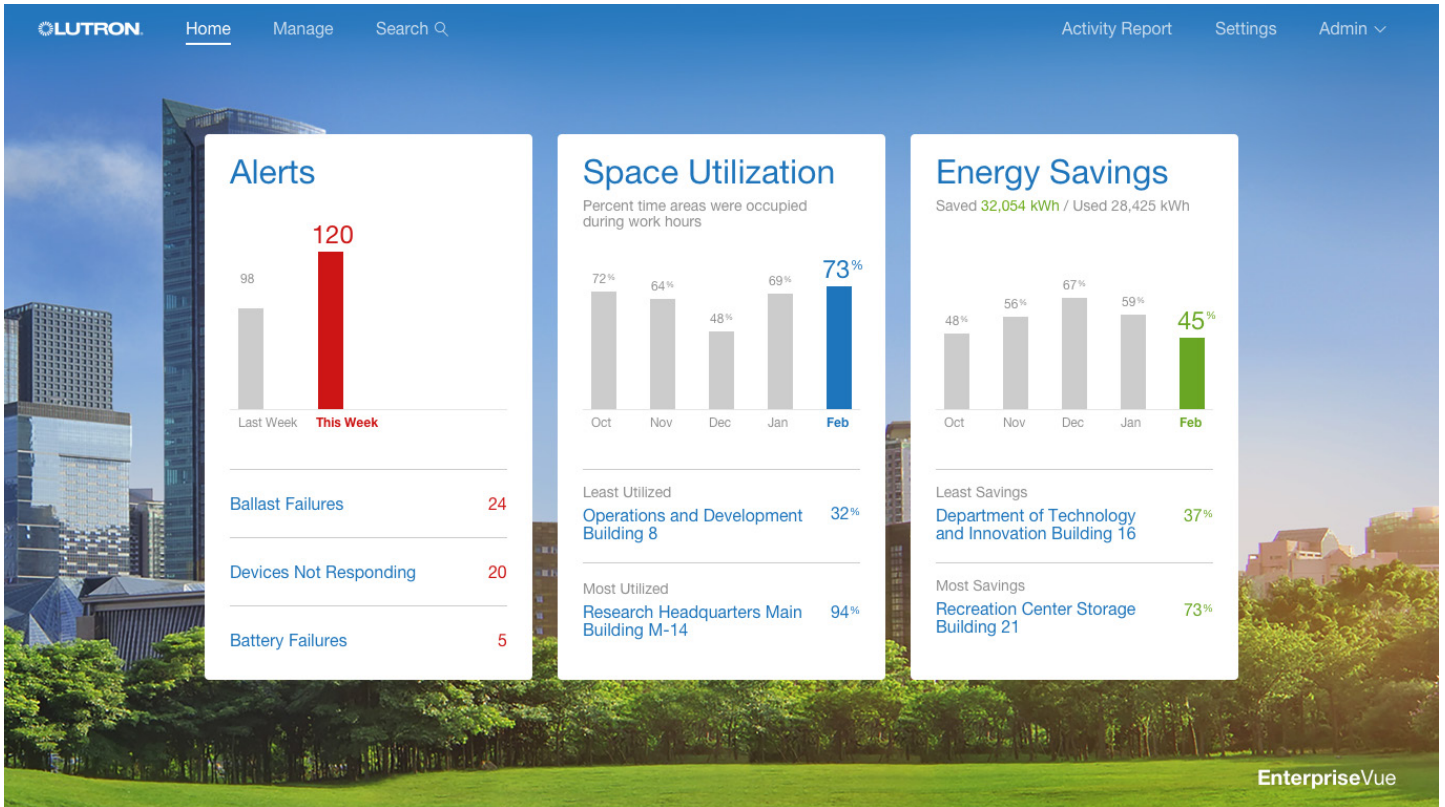


Enterprise Vue Software

Enterprise Vue software allows for a single, web-based software interface that connects to multiple Quantum Vue or Vive Vue systems. The Enterprise dashboard will show Energy data and Space Utilization reports for all systems that are connected to Enterprise Vue. Enterprise Vue also allows users to navigate into connected systems to view additional details. Enterprise Vue can also sign into Limelight systems.

These licenses and the features and capabilities discussed in this specification submittal pertain to Quantum Vue Version 3.4 and above, and Vive Vue 1.7 and above.



Job Name:	Model Numbers:
Job Number:	

Features

Navigation

- Navigate through campuses and buildings using user-imported graphical floor plans
- Navigate to any connected system to view additional details and adjust settings – see Quantum Total Light Management Specification 369778 and Vive Vue Specification 3691067 at www.lutron.com for details

Occupancy¹

- View historical space utilization data for all connected systems data for Quantum and Vive systems

Energy Management¹

- View energy usage graphs for all connected Quantum and/or Vive Vue systems
- View energy savings by strategy for all connected Quantum systems

Alerts¹

- View alerts across all connected Quantum systems

User Access

- Username and password required for access
- Supports multiple user accounts with configurable permission levels per user
- User roles include admin, control and monitor, and control and edit
- Non-admin users can be restricted to access selected buildings/areas
- Supports up to 5 concurrent users and up to 10,000 user accounts
- Supports user authentication against an LDAP server

¹ Lutron will backup historical data during an upgrade from earlier versions of Quantum. In some cases, data logging will start afresh in the new Enterprise Vue system.

Job Name: Job Number:	Model Numbers:
--	-----------------------

System Requirements

- Access to the Enterprise Vue software from multiple devices (e.g., laptops, desktops, tablets) on the network requires a Windows physical or virtual server called the Q-Manager. See the following specifications for Q-Manager server requirements (to view online, click on the individual model numbers below):
 - QS-A-CMP-S-0: Lutron-provided standard server
 - QS-A-CMP-R-0: Lutron-provided high reliability server
 - QS-A-CMP-SBO-0: Customer-provided server
 - QS-A-CMP-VSBO-0: Customer-provided virtual server
- A Q-Manager Windows computer running the Enterprise Vue software must be able to communicate with the connected Quantum/Vive system server(s) over an Ethernet network.
- Enterprise Vue can be installed on the same server as any of the connected systems.
- Enterprise Vue can also be installed on a separate server.
- The number of systems that can be installed on a single server depends on the size of each system and the server specifications. In general, Lutron recommends the total number of areas controlled by all systems on a single server be limited to 1000 areas or less.
- To more quickly respond to any future service needs, Lutron highly recommends configuring remote access to the Q-Manager server.
- For more information on required server and network configurations, see the Lutron Enterprise Vue IT Implementation Guide: <http://www.lutron.com/TechnicalDocumentLibrary/040449.pdf>

System Limits

- The Lutron software listed below may all be installed on the same server. A single installation of Enterprise Vue, can co-exist with 10 Quantum Vue instances OR 9 Quantum Vue instances and a single Vive Vue instance. A single server can contain no more than one Vive Vue and Enterprise Vue instance.
- Enterprise Vue software limits per server
 - Quantum 3.4.267 or greater
 - Vive Vue 1.7 or greater
 - Total of up to 10 Quantum/Vive systems (max of 1 Vive Vue instance per server)
 - Max 100 connected Quantum processors or Vive hubs
 - 25 Limelight systems
- Max number of systems per installation of Enterprise Vue
 - 30 Quantum Vue or Vive Vue systems
 - 25 Limelight systems
- After reaching these limits, another installation of Enterprise Vue is required.

Licenses for Enterprise Vue

- One Enterprise Vue license must be purchased for each Enterprise Vue system or addition to an existing system (model number ENTERPRISE-VUE).
- Each Quantum processor in an Enterprise Vue system must have a Space Utilization license (model number QSW-RPT-SU).
- Each Vive hub in an Enterprise Vue system must have a Vive Vue license (model number VIVE-VUE).

Browser Requirements

- Enterprise Vue can be accessed on most devices running an HTML5 compliant browser- listed below.
- Supported configurations:

Device	Minimum Browser Version
<i>iPad Air or iPad Mini 2+, or iPad Pro</i>	<i>Safari (iOS 10 or 11)</i>
Android or Windows laptop, desktop, or tablet	Google Chrome Version 49

The Lutron logo, Lutron, Limelight, Q-Manager, Quantum, Quantum Vue, and Vive are trademarks or registered trademarks of Lutron Electronics Co., Inc. in the US and/or other countries.

iPad Air, iPad Mini, iPad Pro, and Safari are registered trademarks of Apple Inc., registered in the U.S. and other countries.

Android and Google Chrome are registered trademarks of Google, Inc. of Mountain View, CA.

All other product names, logos, and brands are property of their respective owners.

Job Name:	Model Numbers:
Job Number:	