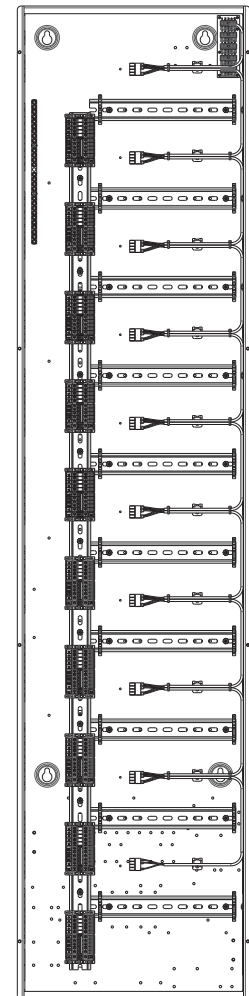


120 V~ Feed-Through DIN Panels (and Accessories)

The Lutron family of DIN rail panels are designed to accept Lutron DIN power modules (DPMs). The compatible DPMs can be configured in the panel to control multiple load types to fit the size, lighting plan, and design of a project. Control panels have a control gear compartment that can house a low-voltage interface or processor. Satellite panels replace the control gear compartment with DIN rail rows to mount additional DPMs. Panels may either be surface-mounted or recess-mounted in an electrical closet or other equipment room.

Features

- Panels can house these DPMs:
 - LQSE-2HDC-D
 - LQSE-4A1-D
 - LQSE-4A5-120-D
 - LQSE-4A-120-D (*discontinued*)
 - LQSE-4T5-120-D
 - LQSE-4T20-120-D
 - LQSE-4S8-120-D
 - LQSE-4M-120-D
- Panels available in three sizes: 16 in (406 mm), 42 in (1067 mm), and 65 in (1651 mm).
- Optional control panels, within 42 in (1067 mm) and 65 in (1651 mm) enclosures can house:
 - Up to 2 interfaces or processors:
 - HQP7-1 or HQP7-2 (HomeWorks QSX processor)
 - HQP7-MDU-1 or HQP7-MDU-2 (QSX MDU processor)
 - QSE-IO (contact closure interface)
 - QSE-CI-DMX (DMX interface)
 - Up to 2 power supplies:
 - QSPS-DH-1-75 or QSPS-DH-1-75-H (24 V_{DC} power supply)
 - Up to 4 wire landing boards:
 - QS-WLB (wire landing board)
- Panels come ready to install DPMs (sold separately).
- Panels are feed-through only.
- Extensively tested to ensure optimal thermal performance with maximum load in 32 °F to 104 °F (0 °C to 40 °C) ambient environment.
- Terminal blocks included for field wiring prior to DPM installation (typically done at a later time).
- Rated for 120 V~ applications.
- Panels come with a QS wire landing board (QS-WLB) and QS link wiring harness for easy installation.
- Panels are for housing Lutron equipment only and are not rated for third-party equipment unless specified by Lutron.



PD10-65T-DV

120 V~ Feed-Through DIN Panels (and Accessories)

Specifications

Model Numbers	PD2-16T-DV; PD4-42T-DV; PD6-42T-DV; PD8-65T-DV; PD10-65T-DV
Power	Feed-through: 120 V~ 50/60 Hz
Capacity*	<p>PD2-16T-DV: Two DPMs and one Wire Landing Board (WLB).</p> <p>PD4-42T-DV: Four DPMs, four WLBs, two power supplies, and two low-voltage interfaces or processors.</p> <p>PD6-42T-DV: Six DPMs and one WLB.</p> <p>PD8-65T-DV: Eight DPMs, four WLBs, two power supplies, and two low-voltage interfaces or processors.</p> <p>PD10-65T-DV: Ten DPMs and one WLB.</p>
Regulatory Approvals	cULus, NOM
Environment	Ambient operating temperature: 32 °F to 104 °F (0 °C to 40 °C), 0% to 90% humidity, non-condensing. Indoor use only.
Cooling	Passive cooling
Line-Voltage Connections	Use copper wire only. In a feed-through panel, wires will land on DIN terminal blocks. DIN terminal blocks are included for field wiring prior to DPM installation.
Ground Bar Terminals	<p>PD2: 7-position ground bar</p> <p>PD4 and PD6: 15-position ground bar</p> <p>PD8 and PD10: 27-position ground bar</p> <p>Note: Ground bar positions can have a single 10 AWG to 14 AWG (6.0 mm² to 2.5 mm²) wire or up to two 12 AWG (4.0 mm²) wires.</p>
Dimensions	<p>PD2: Panel: 15.125 in x 15.5 in x 3.94 in (385 mm x 394 mm x 100 mm) Cover: 15.875 in x 16 in x 0.06 in (403 mm x 406 mm x 1.5 mm)</p> <p>PD4 and PD6: Panel: 15.125 in x 41.5 in x 3.94 in (385 mm x 1054 mm x 100 mm) Cover: 15.875 in x 42 in x 0.06 in (403 mm x 1067 mm x 1.5 mm)</p> <p>PD8 and PD10: Panel: 15.125 in x 64.5 in x 3.94 in (385 mm x 1638 mm x 100 mm) Cover: 15.875 in x 65 in x 0.06 in (403 mm x 1651 mm x 1.5 mm)</p>

* Use of non-Lutron equipment in the panel voids the warranty and agency approvals.

Continued on next page...

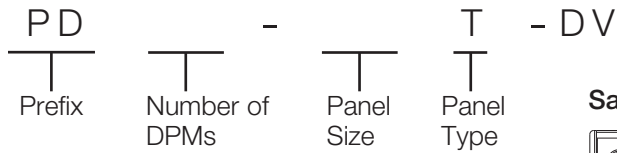
120 V~ Feed-Through DIN Panels (and Accessories)

Specifications (continued)

Mounting	<p>Install and wire in accordance with all local and national codes. Panel may be surface-mounted or recess-mounted. Panel fits between standard 16 in (407 mm) on-center stud framing. When flush mounting, the panel fits in a standard 2x4 stud bay with sheetrock [3.94 in (100 mm)]. Panel must be mounted within +/- 7° of vertical. Mount the panel so that line-voltage wiring will be at least 6 ft (1.8 m) from audio and video equipment, or radio frequency devices equipment and wiring. Mounting hardware is not provided. Mount panel using one of the following methods:</p> <p>Surface-Mount: Use keyholes with bolts sufficient for 110 lb (50 kg) load, 1/4 in (M6) bolts recommended.</p> <p>Recess-Mount: Use hardware sufficient for 110 lb (50 kg) through the corners of the panel. Panel is 3.94 in (100 mm) deep past cover mounting tabs (including pedestal).</p> <p>NOTICE: This equipment is air-cooled. Allow at least 12 in (305 mm) of air space at the top, bottom, and front of the cover or as required by local codes (whichever is greater).</p> <p>NOTICE: Power supply will hum slightly and internal relays will click while in use. Mount in a location where such noise is acceptable.</p> <p>NOTICE: Limit vertical stacking of PD2 panels to three panels high. Limit vertical stacking of PD4 panels to two panels high, while maintaining at least 12 in (305 mm) of air space at the top and bottom of each panel. Do not vertically stack PD6, PD8, or PD10 panels.</p>
Construction	<p>Panel: 16-gauge galvanized sheet metal (unpainted).</p> <p>Cover: Coated metal cover with ventilation holes. Cover is attached using phillips-head screws (included).</p>
Warranty	<p>www.lutron.com/TechnicalDocumentLibrary/Warranty.pdf</p>

120 V~ Feed-Through DIN Panels (and Accessories)

Model Number Example



Number of DPMs:

- 2 = 2 DPMs (satellite panel)
- 4 = 4 DPMs (control panel)
- 6 = 6 DPMs (satellite panel)
- 8 = 8 DPMs (control panel)
- 10 = 10 DPMs (satellite panel)

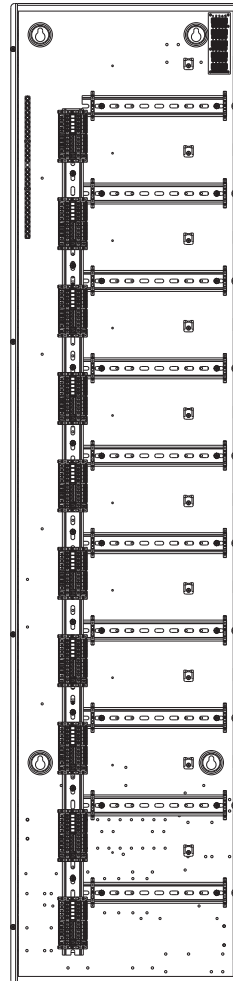
Panel Size:

- 16 = 16 in (407 mm) enclosure (PD2)
- 42 = 41.5 in (1054 mm) enclosure (PD4, PD6)
- 65 = 64.5 in (1638 mm) enclosure (PD8, PD10)

Panel Type:

T = Feed-through with terminal blocks

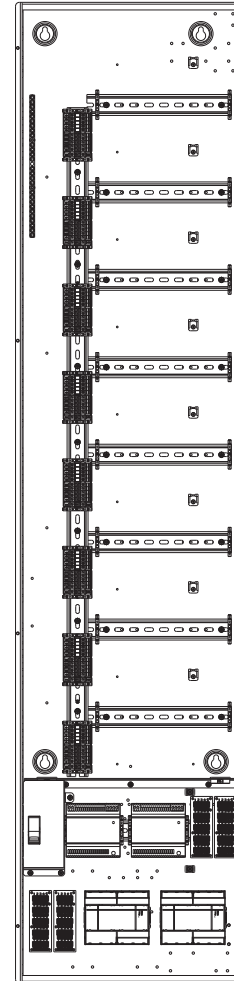
Satellite Panel



PD10-65T-DV

Satellite panels replace the control gear compartment with DIN rail rows for two additional DPMs.

Control Panel



PD8-65T-DV*

Control panels have a control gear compartment housing up to four WLBs, two power supplies, and two low-voltage interfaces or processors.

*Panels shown with components. Components sold separately.

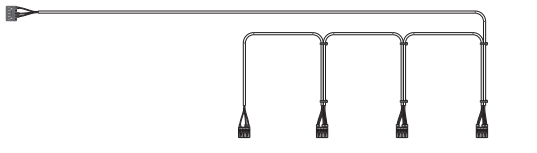
120 V~ Feed-Through DIN Panels (and Accessories)

Optional Accessories

DPM QS Link Wire Harnesses (one included with each panel)

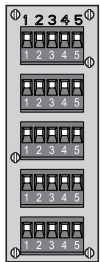
PDW-QS-2	Wiring for up to 2 DPMs (PD2 panel)
PDW-QS-4	Wiring for up to 4 DPMs (PD4 panel)
PDW-QS-6	Wiring for up to 6 DPMs (PD6 panel)
PDW-QS-8	Wiring for up to 8 DPMs (PD8 panel)
PDW-QS-10	Wiring for up to 10 DPMs (PD10 panel)

Example: PDW-QS-4



QS Wire Landing Board (one included with each panel)

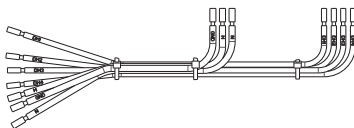
QS-WLB	Wire landing board for QS wiring
--------	----------------------------------



DPM Line Voltage Wire Harnesses (sold separately)

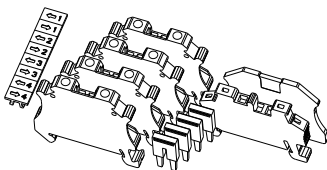
PDW-D-DV	Wiring for LQSE-4A5-120-D, LQSE-4A-120-D (<i>discontinued</i>)
PDW-S-DV	Wiring for LQSE-4S8-120-D
PDW-ED-DV	Wiring for LQSE-2HDC-D
PDW-M-DV	Wiring for LQSE-4M-120-D
PDW-A-DV	Wiring for LQSE-4A1-D
PDW-T-DV	Single-Feed wiring for LQSE-4T5-120-D, LQSE-4T20-120-D
PDW-T-DV-MF	Multi-feed wiring for LQSE-4T20-120-D

Example: PDW-D-DV



DPM Line Voltage Terminal Block Kits (sold separately)

PDT-T-DV-MF	Multi-feed terminals for LQSE-4T20-120-D
-------------	--



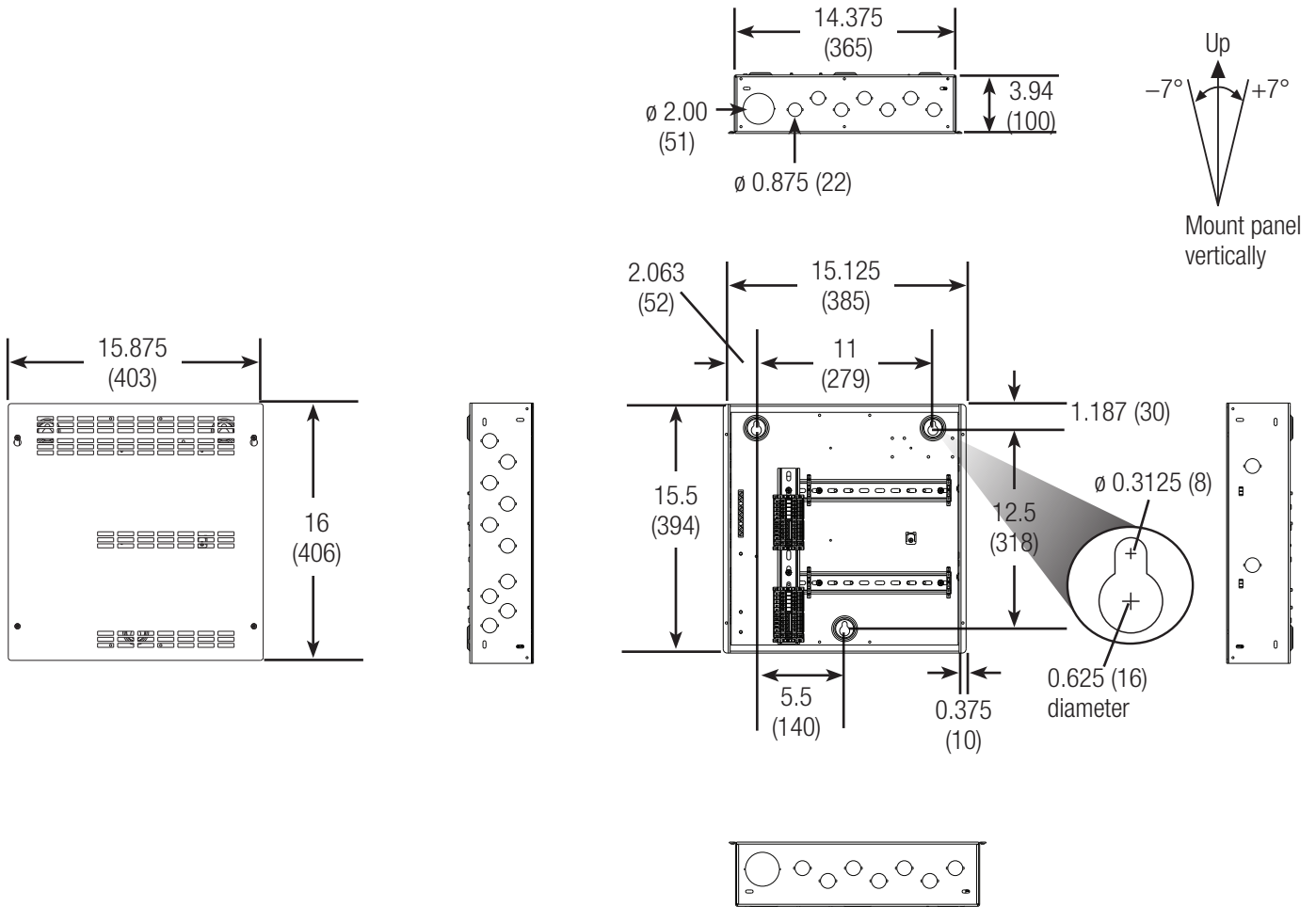
Customer Assistance:
 1.844.LUTRON1 (U.S.A. / Canada)
 +1.888.235.2910 (Mexico)

120 V~ Feed-Through DIN Panels (and Accessories)

Dimensions and Mounting

PD2-16T-DV Satellite Panel

All measurements shown as: in (mm)

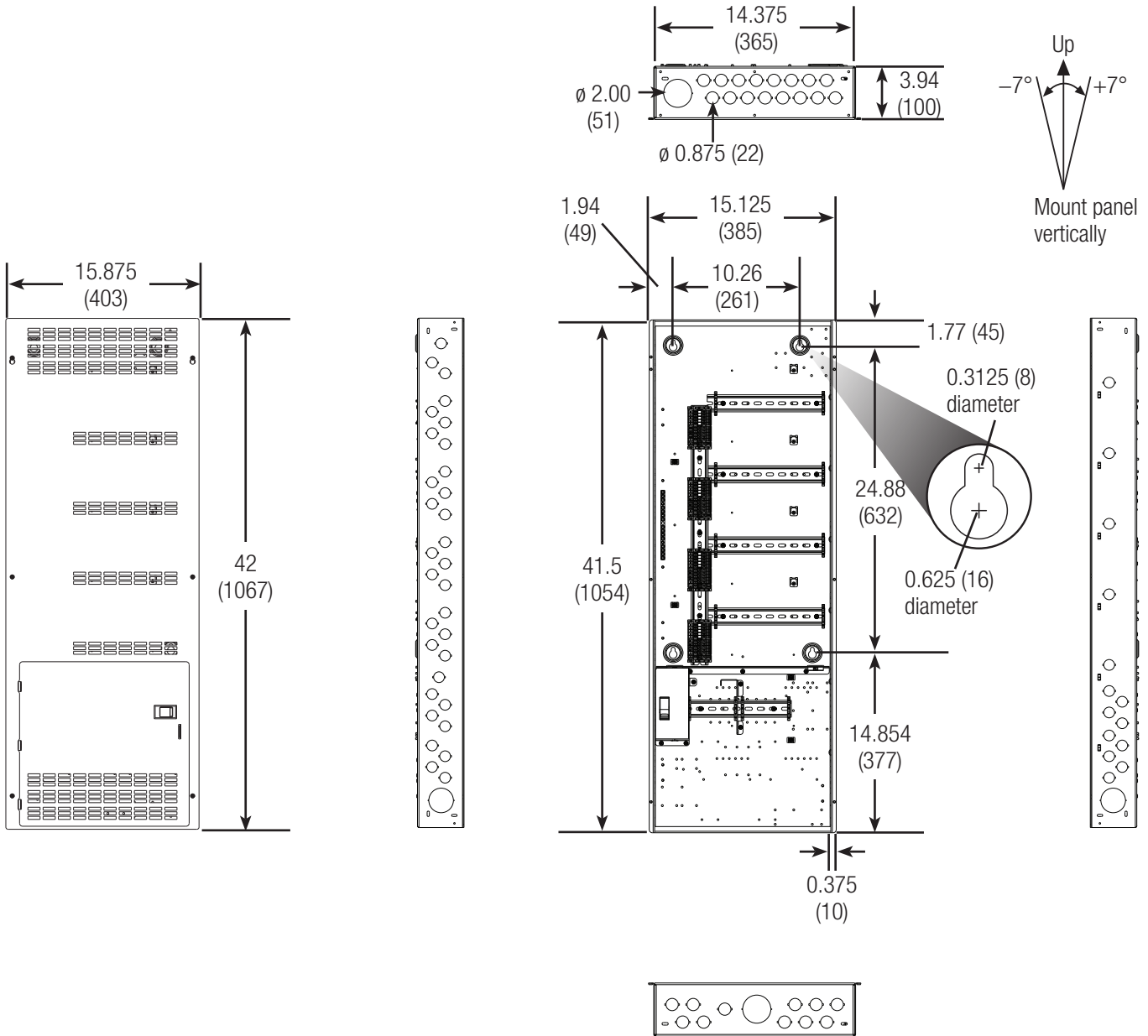


120 V~ Feed-Through DIN Panels (and Accessories)

Dimensions and Mounting

PD4-42T-DV Control Panel

All measurements shown as: in (mm)

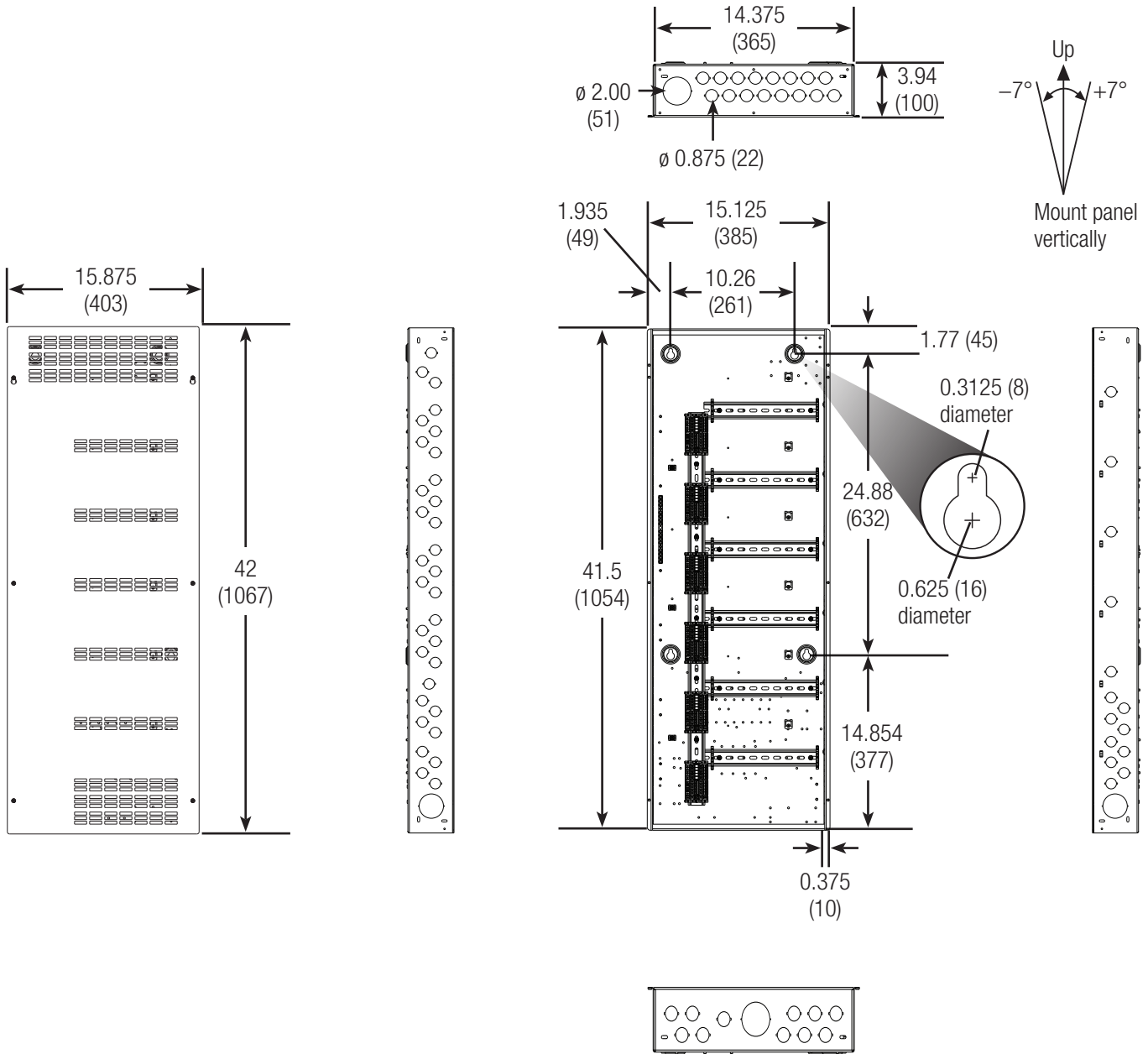


120 V~ Feed-Through DIN Panels (and Accessories)

Dimensions and Mounting

PD6-42T-DV Satellite Panel

All measurements shown as: in (mm)

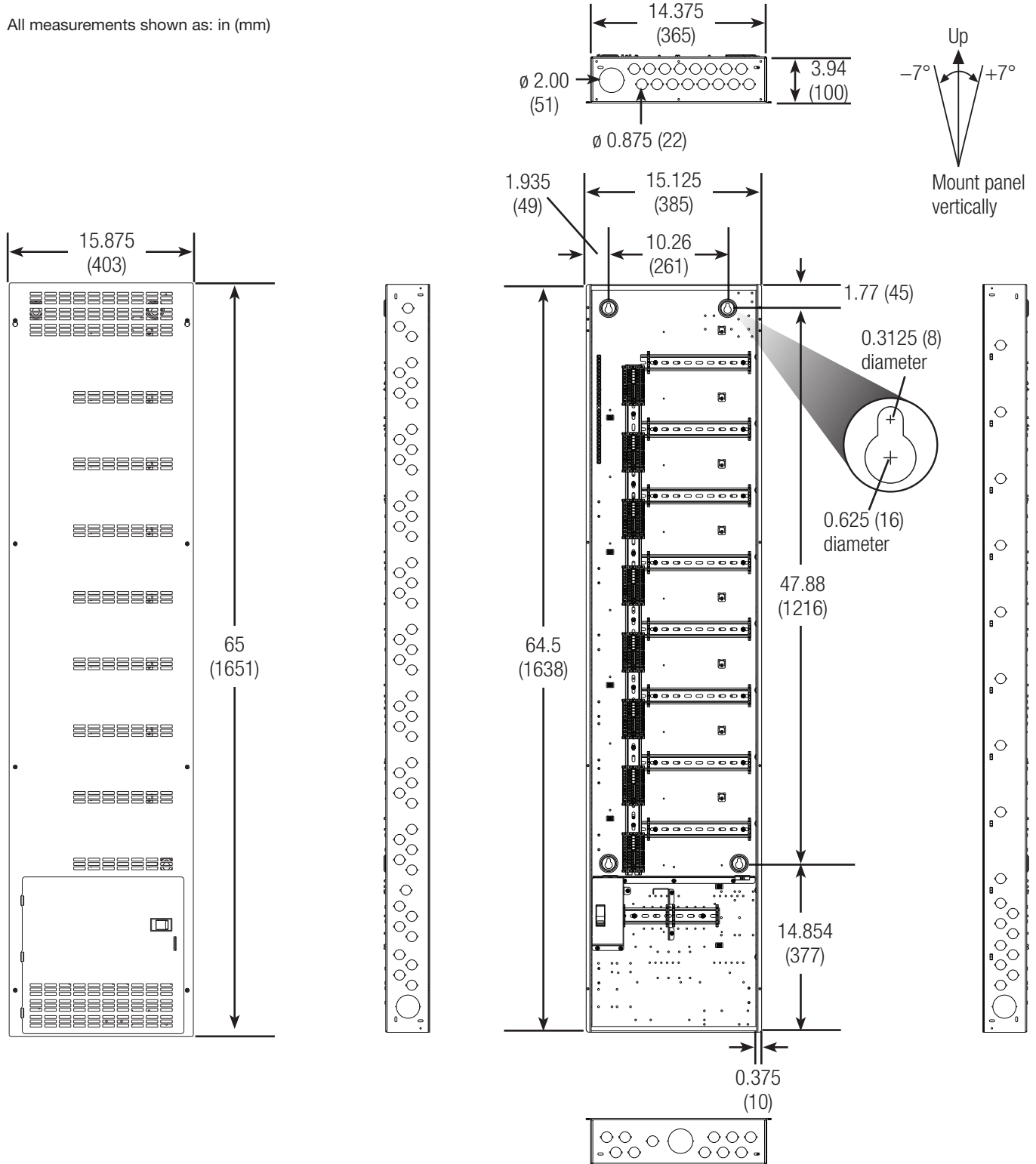


120 V~ Feed-Through DIN Panels (and Accessories)

Dimensions and Mounting

PD8-65T-DV Control Panel

All measurements shown as: in (mm)



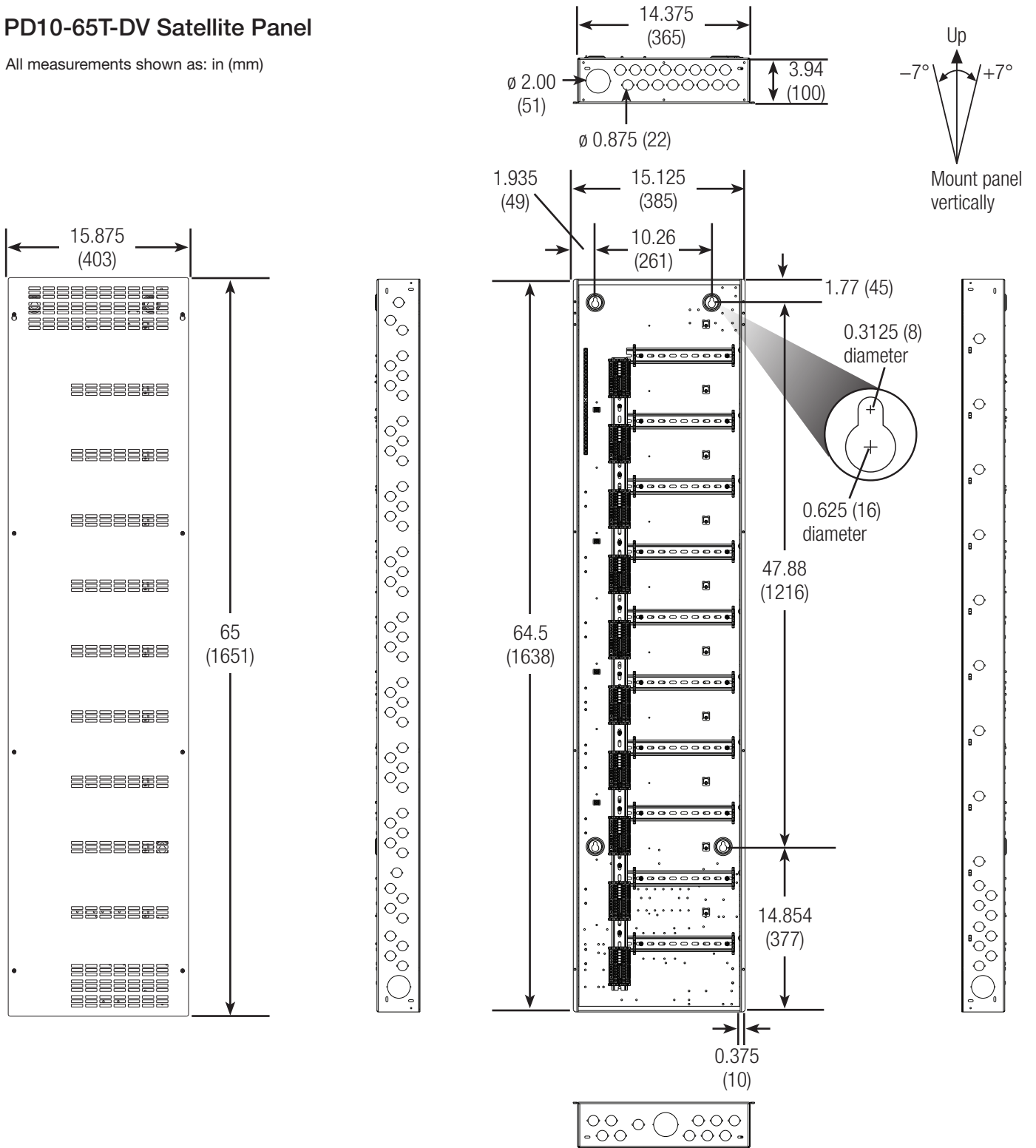
Customer Assistance:
 1.844.LUTRON1 (U.S.A. / Canada)
 +1.888.235.2910 (Mexico)

120 V~ Feed-Through DIN Panels (and Accessories)

Dimensions and Mounting

PD10-65T-DV Satellite Panel

All measurements shown as: in (mm)



Lutron and HomeWorks are trademarks or registered trademarks of Lutron Electronics Co., Inc. in the US and/or other countries.

Customer Assistance:
 1.844.LUTRON1 (U.S.A./Canada)
 +1.888.235.2910 (Mexico)