

Lumaris Tunable White Recessed Downlight Family

The Lumaris downlight family makes it easy to bring the familiar feelings of daylight and incandescent light to new or existing spaces. A unique combination of warm-dim and tunable white in one, Lumaris downlights deliver a more natural-feeling electric light and intuitive end-user control.

Lumaris downlights are available in multiple installation options to suit unique project requirements, combining superior lighting quality with flexible design choices.

Features

Lighting System

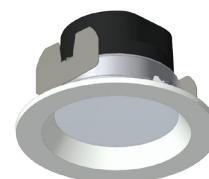
- Works seamlessly with HomeWorks QSX, RadioRA 3, Athena, and myRoom XC systems
- Independent control of intensity and color temperature
- Warm dimming to mimic the dimming curve of an incandescent lamp
- Programming presets can automatically change color temperature based on the time of day

Downlight

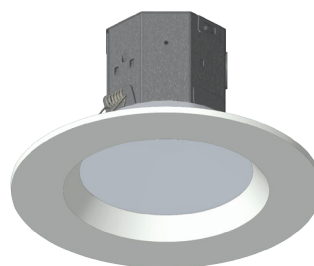
- 1800 K - 4000 K CCT range, matching all Lumaris family products
- 2-channel, continuous, flicker-free dimming from 100% down to 0.1% of measured light output¹
- Output: 800 lumens
- CRI: 90+ throughout the tunable white range
- 50,000 hours rated lifetime (L70)



4 in (101.6 mm)
Canless Downlight



4 in (101.6 mm)
Retrofit Downlight



6 in (152.4 mm)
Canless Downlight



5 in (127 mm)/6 in (152.4 mm)
Retrofit Downlight

- Uses Clear Connect – Type X wireless communication
- 0.5 in (12.7 mm) recess and diffusive white lens to reduce unwanted glare
- Permanently affixed white or black plastic trim options available
- Retrofit or canless options available

Model Number			Description
HomeWorks QSX	RadioRA 3	Commercial (Athena/myRoom XC)	
HWL-RD4WH-TW	RRL-RD4WH-TW	CM-RD4WH-TW	4 in (101.6 mm) retrofit recessed downlight with white trim
HWL-RD4BL-TW	RRL-RD4BL-TW	CM-RD4BL-TW	4 in (101.6 mm) retrofit recessed downlight with black trim
HWL-RD6WH-TW	RRL-RD6WH-TW	CM-RD6WH-TW	5 in (127 mm)/6 in (152.4 mm) retrofit recessed downlight with white trim
HWL-RD6BL-TW	RRL-RD6BL-TW	CM-RD6BL-TW	5 in (127 mm)/6 in (152.4 mm) retrofit recessed downlight with black trim
HWL-CD4WH-TW	RRL-CD4WH-TW	CM-CD4WH-TW	4 in (101.6 mm) canless recessed downlight with white trim
HWL-CD4BL-TW	RRL-CD4BL-TW	CM-CD4BL-TW	4 in (101.6 mm) canless recessed downlight with black trim
HWL-CD6WH-TW	RRL-CD6WH-TW	CM-CD6WH-TW	6 in (152.4 mm) canless recessed downlight with white trim
HWL-CD6BL-TW	RRL-CD6BL-TW	CM-CD6BL-TW	6 in (152.4 mm) canless recessed downlight with black trim

¹ Tunable white performance is maintained from 100% to 1%.

Job Name:	Model Numbers:
Job Number:	

Specifications

Electrical

- 120 V~ 60 Hz
- 0.07 A
- 8.5 W
- 40 downlights maximum per 15 A breaker

Regulatory Approvals

- cULus listed
- FCC approved. Complies with the limits for a Class B digital device, pursuant to Part 15 of the FCC Rules
- Industry Canada certified
- California Title 24 as detailed in Reference Joint Appendix JA8 for High Luminous Efficacy Light Sources
- California Title 20 for State Regulated Light Emitting Diode Lamps (retrofit versions)

Environmental

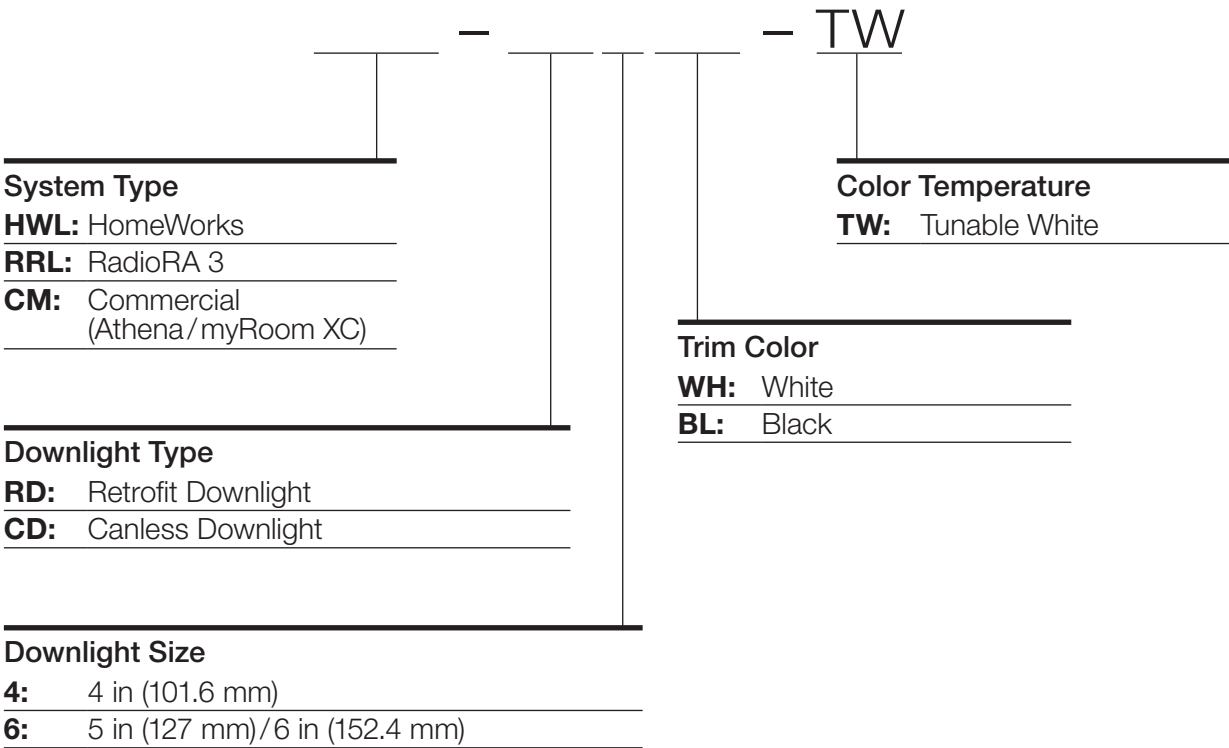
- Ambient operating temperature:
32 °F to 104°F (0 °C to 40 °C)
- Relative humidity: 0% – 90% non-condensing
- Suitable for dry or damp locations
- Suitable for wet locations. Covered ceiling only
- Type IC rated and inherently protected
(canless versions)
- Suitable for Type IC and Non-IC luminaires
(retrofit versions)

Warranty

- www.lutron.com/warranty or call
1.844.LUTRON1 (USA/Canada) or
+1.610.282.3800 (Others) for a printed copy

Job Name:	Model Numbers:
Job Number:	

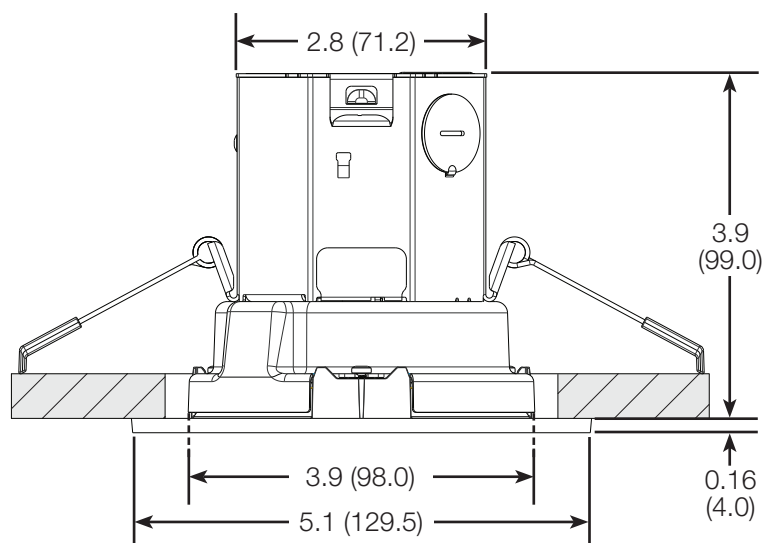
Lumaris Tunable White Recessed Downlight Model Number



Dimensions: Canless Downlight

All dimensions shown as: in (mm)

4 in (101.6 mm) Canless Downlight

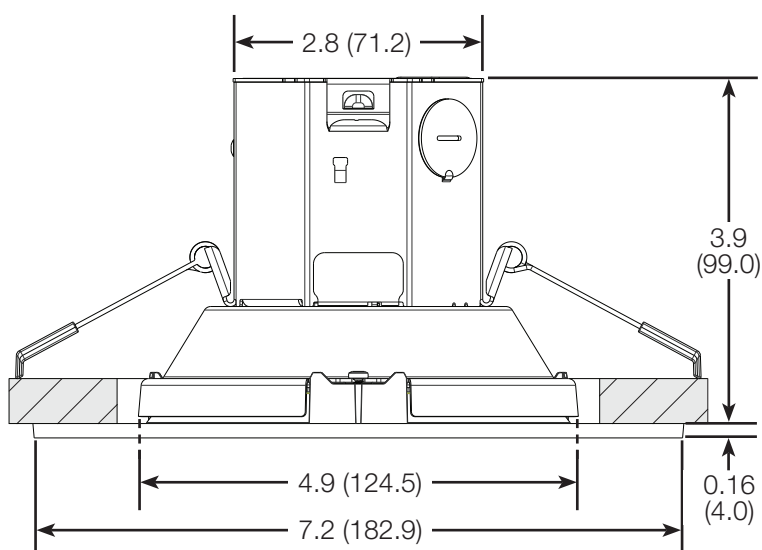


Required hole dimension:
4.25 in to 4.5 in (107.9 mm to 114.3 mm)
Acceptable ceiling thickness:
0.5 in to 1.25 in (12.7 mm to 31.7 mm)

Junction box volume: 7.5 in³ (122.9 cm³)
Junction box wire capacity:

Wire	AWG (mm ²)	Quantity
12/2 with ground	12 (4)	2
14/2 with ground	14 (2.5)	2
14/3 with ground	14 (2.5)	2

6 in (152.4 mm) Canless Downlight



Required hole dimension:
5.25 in to 5.5 in (133.3 mm to 139.7 mm)
Acceptable ceiling thickness:
0.5 in to 1.25 in (12.7 mm to 31.7 mm)

Junction box volume: 7.5 in³ (122.9 cm³)
Junction box wire capacity:

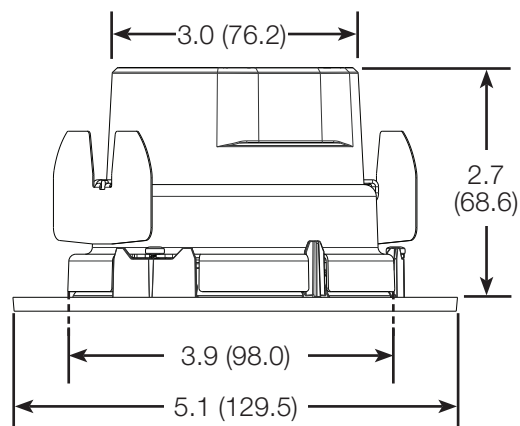
Wire	AWG (mm ²)	Quantity
12/2 with ground	12 (4)	2
14/2 with ground	14 (2.5)	2
14/3 with ground	14 (2.5)	2

Job Name:	Model Numbers:
Job Number:	

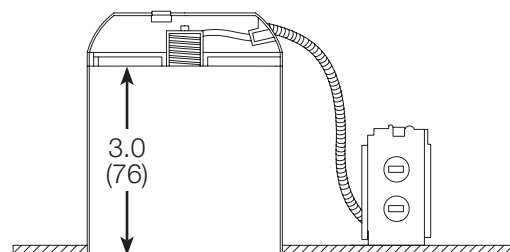
Dimensions: Retrofit Downlight

All dimensions shown as: in (mm)

4 in (101.6 mm) Retrofit Downlight

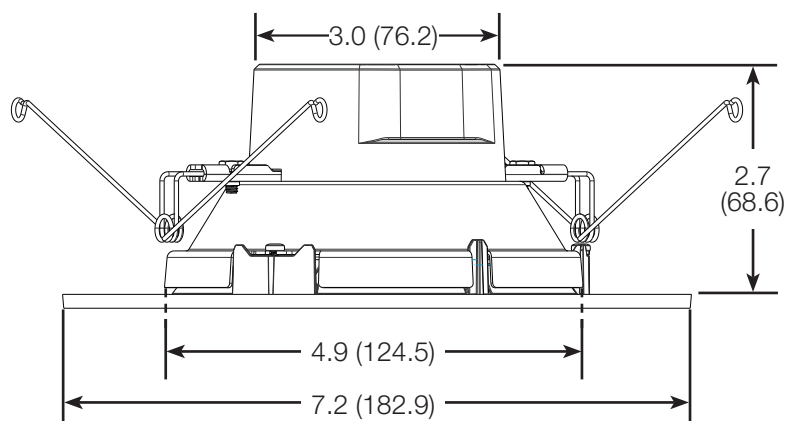


Note: Minimum recessed housing depth for 4 in (101.6 mm) and 6 in (152.4 mm) retrofit downlights: 3.0 in (76 mm)

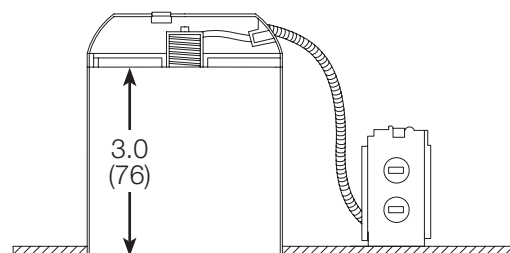


Acceptable diameter range: 4 in (101.6 mm) to 4.125 in (104.8 mm)

5 in (127 mm)/6 in (152.4 mm) Retrofit Downlight



Note: Minimum recessed housing depth for 4 in (101.6 mm) and 5 in (127 mm)/6 in (152.4 mm) retrofit downlights: 3.0 in (76 mm)

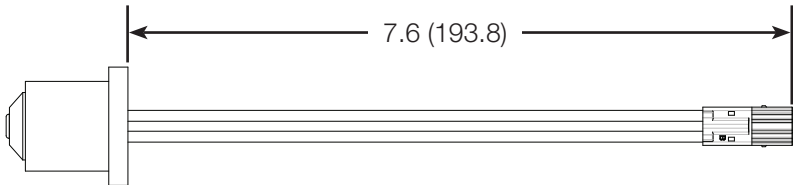


Job Name:	Model Numbers:
Job Number:	

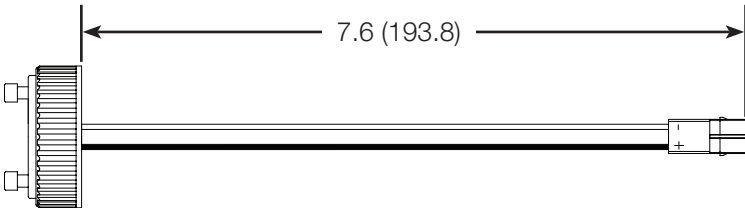
Dimensions: Retrofit Downlight *(continued)*

All dimensions shown as: in (mm)

E26 Adapter (Included with retrofit downlight)



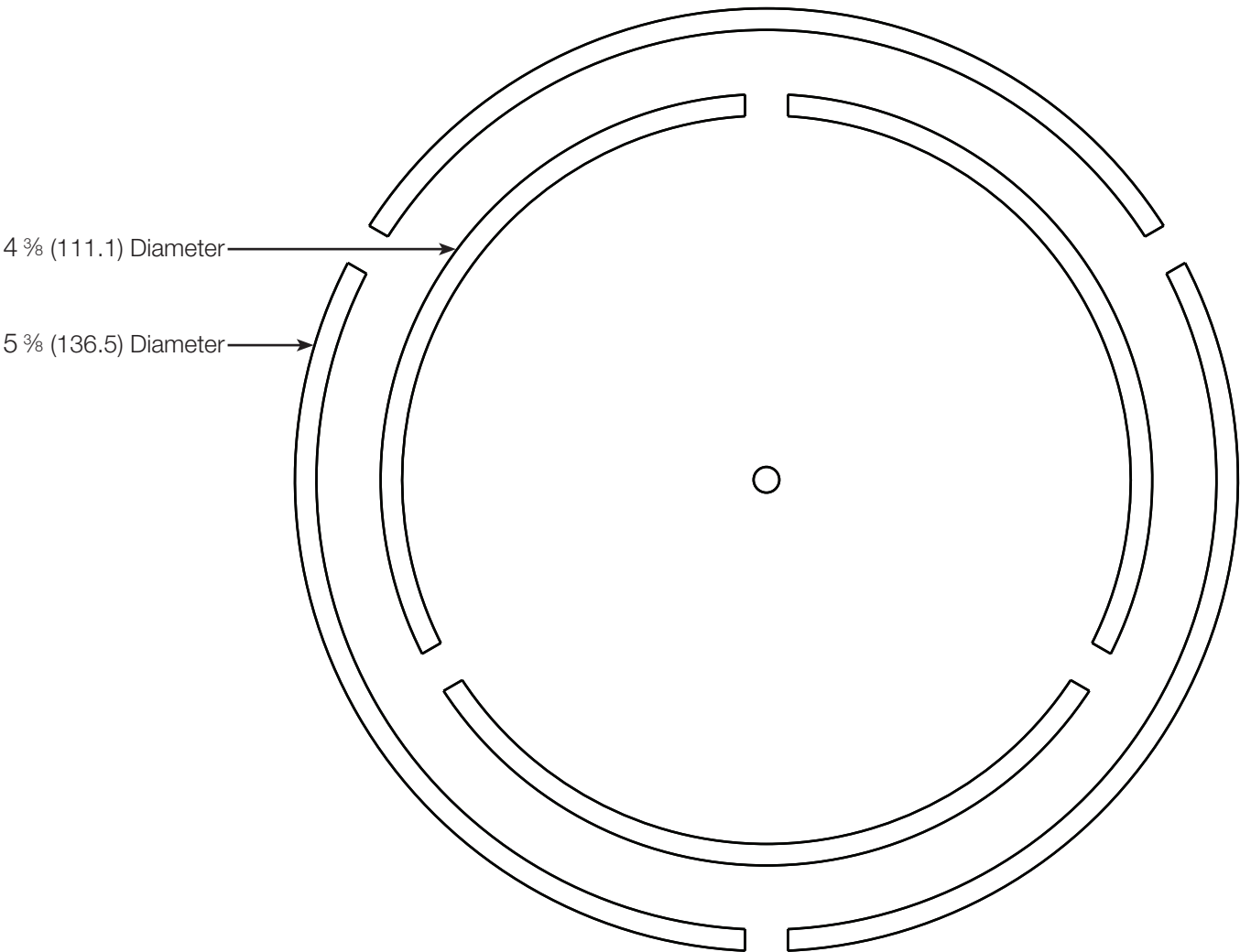
GU24 Adapter (LU-RD-GU24)



Dimensions: Retrofit Downlight (continued)

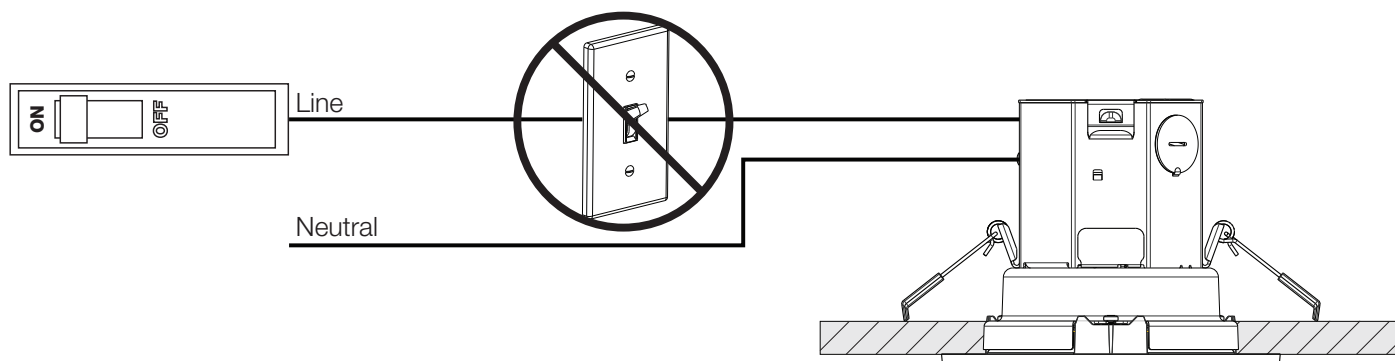
All dimensions shown as: in (mm)

Canless Downlight Template



Wiring Diagram

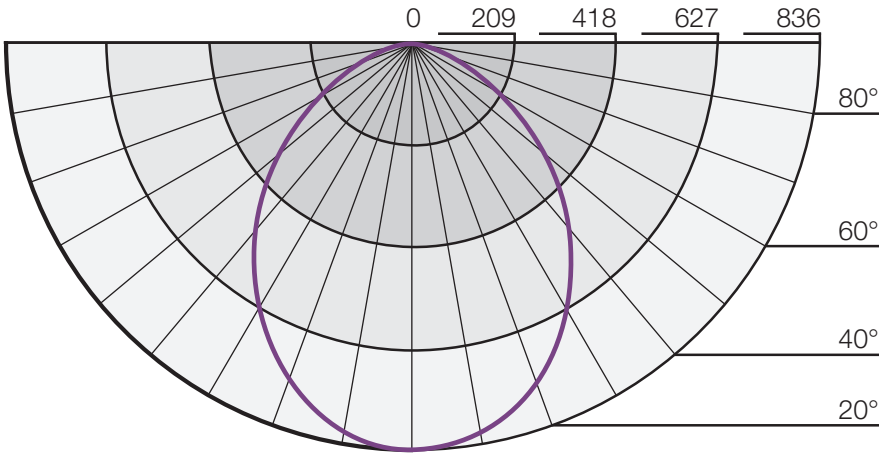
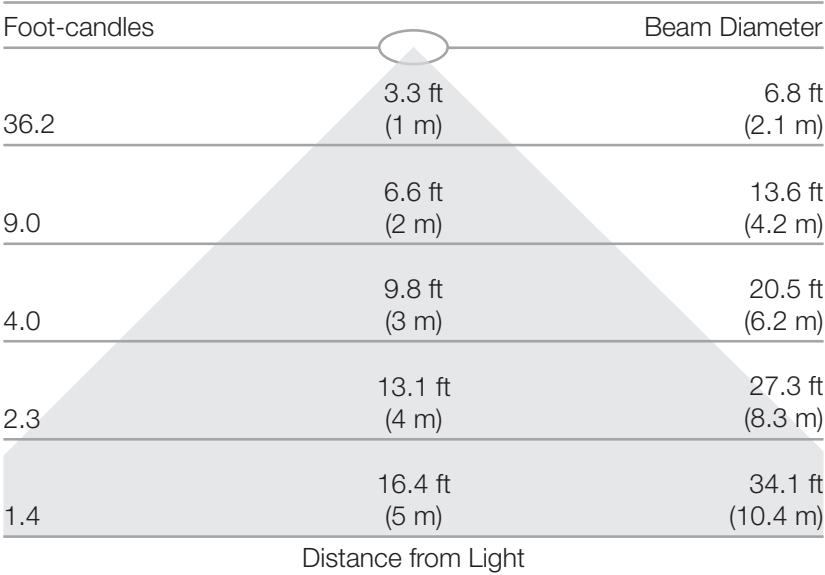
Lumaris downlights are rated to be powered directly by a breaker. Any dimmer or switch in between the breaker and the downlight should be bypassed.



Job Name:	Model Numbers:
Job Number:	

Photometric Data, 4 in (101.6 mm)¹

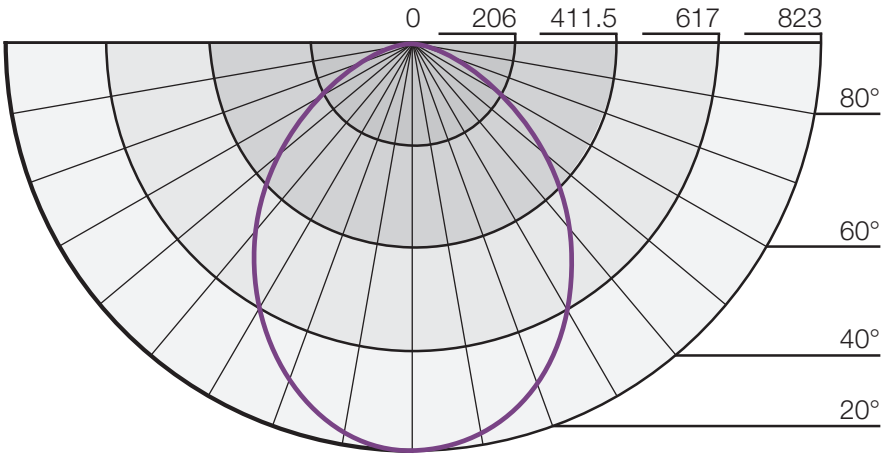
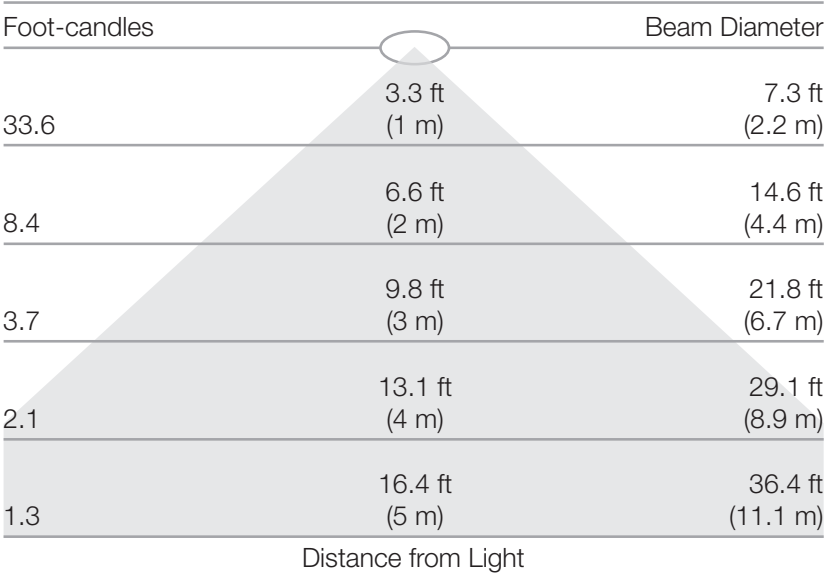
Model Number	Wattage (W)	Delivered Lumens	CBCP
XXX-XD4XX-TW	8.5	800	836



¹ All data is simulated to represent the typical performance expected with the following parameters, unless otherwise stated: white trim, 3000 K, 77 °F (25 °C) ambient, 100% power input.

Photometric Data, 6 in (152.4 mm)¹

Model Number	Wattage (W)	Delivered Lumens	CBCP
XXX-XD6XX-TW	8.5	800	823



¹ All data is simulated to represent the typical performance expected with the following parameters, unless otherwise stated: white trim, 3000 K, 77 °F (25 °C) ambient, 100% power input.

Lutron, Athena, Clear Connect, HomeWorks, Lumaris, myRoom, RadioRA 3, and any related trade dress and logos are trademarks or registered trademarks of Lutron Electronics Co., Inc. in the US and/or other countries.
All other product names, logos, and brands are property of their respective owners.