




myRoom™ prime Programming Kit


The myRoom™ prime programming kit allows efficient programming of myRoom™ prime systems. This kit, in conjunction with the myRoom™ Designer software, enables users to quickly connect to the system, set up the desired configuration, and make changes as needed.

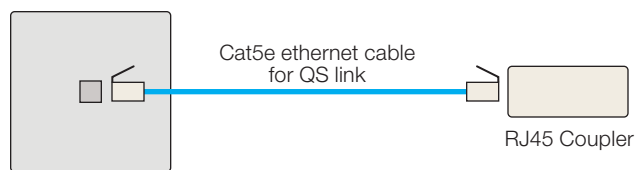
Features

- 100–240 V~ operation
- Enables programming of myRoom™ prime systems using the myRoom™ Designer software
- Allows simple programming for rooms with similar configurations
- Kit includes:
 - GCU-HOSP
 - Power supply and plug QSPS-Px-1-35V, where:
 - x = 0: No power cord
 - x = 1: NEMA 5-15 plug 
 - x = 2: CEE7/7 plug 
 - x = 3: BS 1363 plug 
 - RJ45 coupler
 - Cat5e Ethernet cable for QS link (10 ft [3 m])
 - RJ45 to 5-pin QS Link terminal adapter
 - Protective carrying case (not shown):
12 in (30.5 cm) × 9.5 in (24.1 cm) × 2.5 in (6.4 cm)

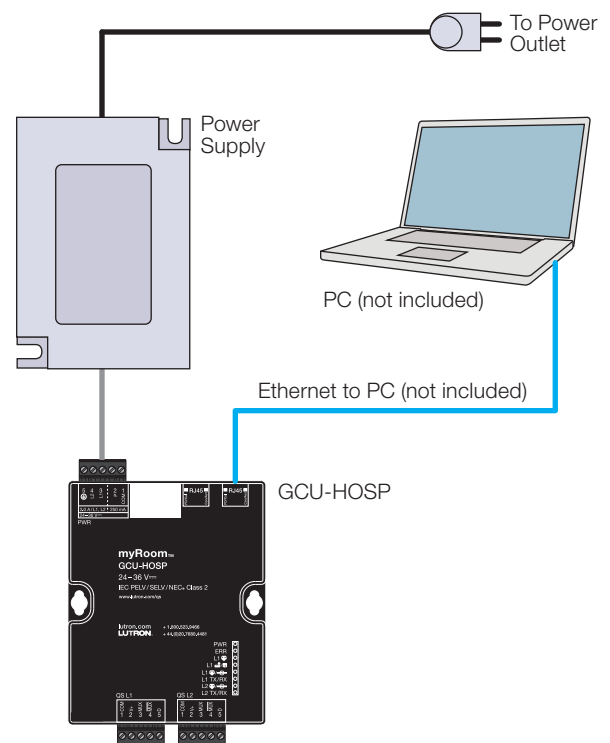
Models Available

- GCU-PRG-P0-CPN7152 (no power cord)
- GCU-PRG-P1-CPN7152 (NEMA 5-15 plug)*
- GCU-PRG-P2-CPN7152 (CEE7/7 plug)
- GCU-PRG-P3-CPN7152 (BS 1363 plug)

* For plug types not shown, a standard PC cable with an IEC 60320 Type C13 connector  may be used between the power supply and the power outlet.



Permanently installed programming jack
QS-PRG-JACK-XX-CPN7153
of myRoom™ prime system
(not included)



Job Name:	Model Numbers:
Job Number:	