

Application Ideas

Maestro® occupancy sensing switch

The following examples show where the occupancy sensor is a good choice and where it is more appropriate to use vacancy mode.

Occupancy Mode

Sensor turns lights on when entering a room and turns them off when the room is vacant.



Bathroom



Storage room



Laundry room



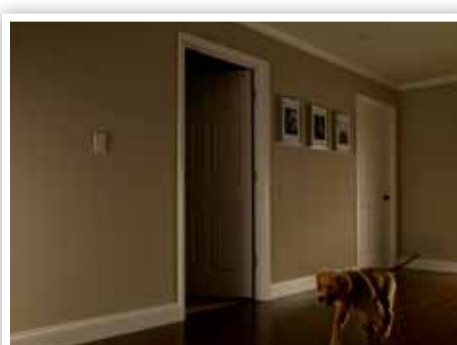
Kitchen

Vacancy Mode

You manually turn lights on when entering a room. Sensor turns lights off when the room is vacant.



Kid's room



Areas with pet activity

