



Performance Shading Solutions

Global leader in automated shading solutions that improve the way buildings and people perform.

We stand above the rest in:

### Performance & Innovation

---

- Superior low-voltage technology guarantees **precise movement and shade positioning** for reliable performance
- Wide selection of fabrics, with a patent-pending, online selection tool that suggests fabric for the **ideal balance of performance and aesthetics to maintain design intent**
- Industry leading control software automates **shade movement for maximized daylight autonomy** balanced with ideal interior light levels
- Seamless integration with lighting controls for a **total light control system that creates perfect harmony between daylight and electric light**

### Service

---

- **Certified solar control dealer network** for reliable project management, installation, and service
- Global **24/7 manufacturer technical support** from U.S.-based headquarters
- 8-year manufacturer limited warranty

### Quality

---

- **We provide the entire solar management solution** — the shade itself, electronic drives, controls, power supplies, software, and hardware — ensuring the highest-quality products and a satisfying customer experience
- Rigorous testing and validation processes for all products and fabrics to **ensure a solution is delivered as specified**



## Balancing aesthetics and performance

Traditionally, solar screen fabrics featuring light colors and lightweight material have been chosen for aesthetic appearance. This can have a profound, negative impact on the space in terms of managing glare, daylight, and view.

Building performance is hugely affected by the properties of a solar screen fabric. The optimal fabric can enhance the performance of a space by reducing glare, maximizing daylight, and preserving view.

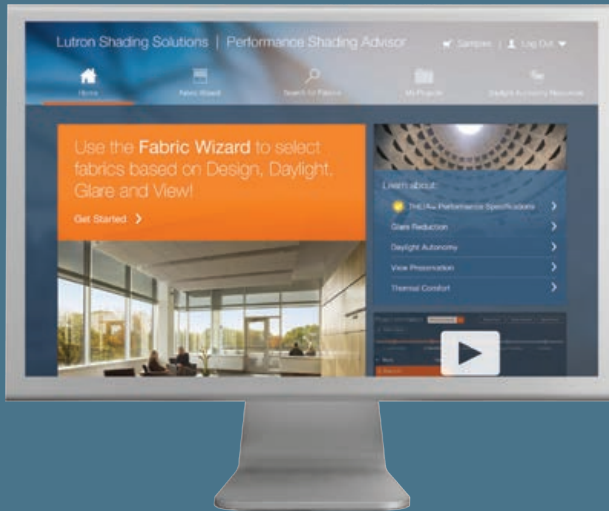


**The Lutron Performance Collection offers over 200 fabrics that can:**

- **Enhance aesthetics** and complement your design
- **Maximize daylight** to minimize electric light
- **Reduce glare** to maintain a comfortable light level (20–200 fc)
- **Preserve view** to create a better interior environment



# The Lutron Performance Shading Advisor



Thousands of fabrics are available for virtually any commercial installation. Choosing the right fabric to maximize building performance can be a daunting process.

Lutron's new web-based Performance Shading Advisor transforms the complicated task of choosing fabrics into a simple selection process.

[www.performanceshadingadvisor.com](http://www.performanceshadingadvisor.com)

## 1 Enter project information

The Lutron Fabric Wizard within the Performance Shading Advisor allows users to enter project parameters and other critical project information and recommends optimal fabrics based on project inputs.

**Fabrics are organized in the following categories:**



Spec Grade Solar Screens



Sustainable Solar Screens



General Purpose Solar Screens



Blackouts

## 2 Review fabric performance details

The new Lutron Performance Shading Advisor allows you to easily view and evaluate fabrics through a simple summary dashboard that displays performance and aesthetic criteria simultaneously.

### Glare Reduction

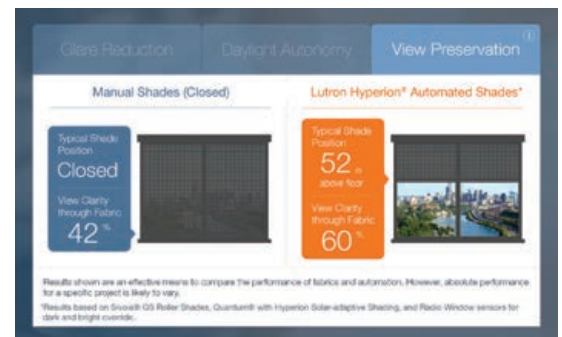
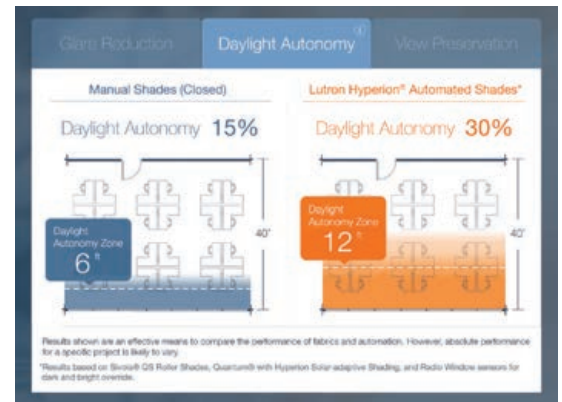
- Uncontrolled glare can severely impact both building and occupant performance
- Fabrics with the optimal Tv value and openness factor will minimize diffused brightness and direct sun glare

### Daylight Autonomy

- Daylight Autonomy (DA) refers to the percentage of space where enough daylight is present for daylight harvesting
- An appropriate fabric selection will maximize the amount of useful daylight, minimizing the need for supplemental electric light

### View Preservation

- Studies show that access to views improves mood, productivity, and memory function
- The right combination of color and openness factor will deliver a better working environment

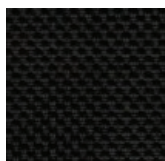


## 3 Compare fabrics and order samples

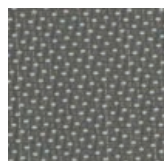
- Filter fabrics based on additional project requirements
- Find your preferred fabric in the Performance Shading Solutions binder, or order fabric samples right from the tool
- Generate and download fabric specification and performance reports

### Optimal fabric examples

The Fabric Wizard typically recommends multiple optimized fabrics with a variety of options, allowing for design preferences to be considered.



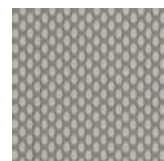
SheerLite  
in Charcoal, 3%  
Tv =9%



Basketweave 27  
in Oyster/Pewter, 3%  
Tv =9%



M Screen - THEIA™  
in White/Pearl, 3.6%  
Tv = 9%



SheerLite  
in Pearl/Grey, 3%  
Tv =9%



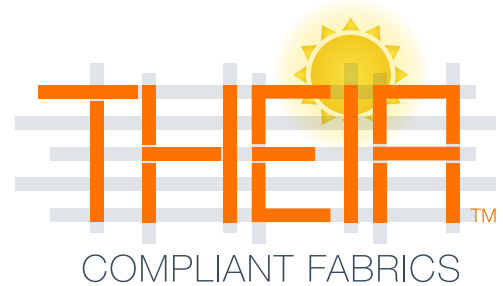
Basketweave Eco2  
in Wheat, 3%  
Tv =9%



Basketweave 90  
in Oyster/Beige, 1%  
Tv =9%

## 4 THEIA™ Compliant Fabrics

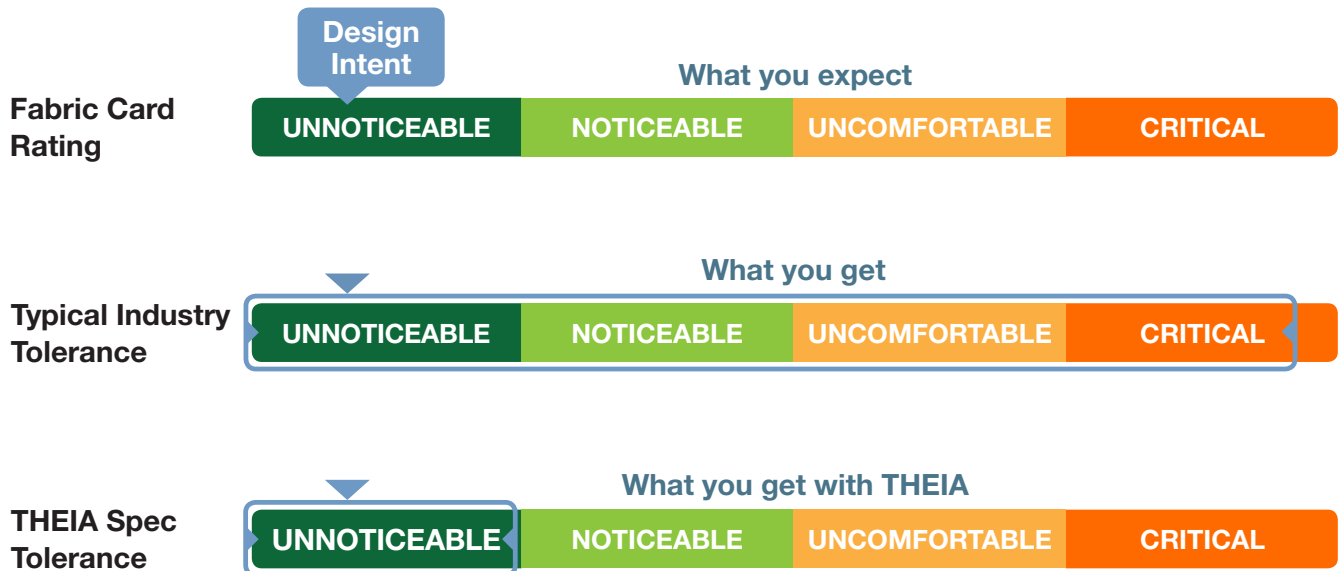
Today, the typical industry tolerance around fabric solar performance properties is large and can cause reduced visual comfort and energy savings. If fabric performance properties are not tightly controlled, your building design intent will not be achieved.



THEIA compliant fabrics:

- Are critical to ensure design intent for building performance is met
- Are held to a new standard to control variations in openness and transmittance
- Ensure that the fabric is delivered as specified

### Glare Performance



### THEIA Performance Specification:

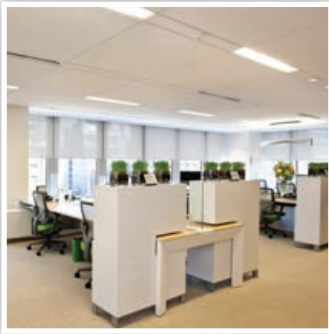
- Openness factor tolerance: (+/- 0.75%)
- Visible light transmittance (Tv) tolerance: (+/- 1%) or (+/- 20% x Tv)
- Follows Measurement Standards EN14500: 2008 and ASTM 903



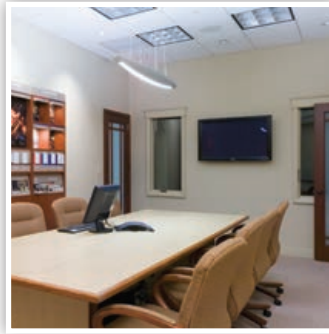
Find THEIA compliant fabrics in the Performance Shading Solutions binder

# Spec Grade Solar Screens

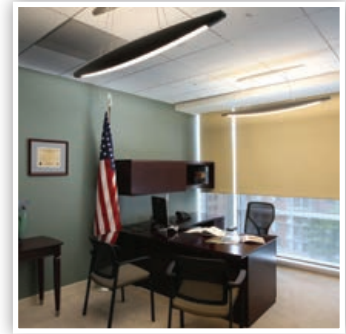
For more information on any of our performance shading solutions, please contact your local Lutron representative. To experience the benefits our shading solutions provide, please schedule a tour at one of our Experience Centers.



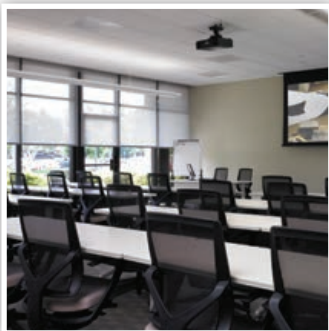
**New York, New York**  
1 Penn Plaza, Suite 1714  
New York, NY 10119  
212.989.1300



**Coopersburg, Pennsylvania**  
7200 Suter Road  
Coopersburg, PA 18036  
610.282.6280



**Washington, DC**  
455 Massachusetts Avenue NW  
Suite 770  
Washington, DC 20001  
202.624.5700



**Irvine, California**  
2458 Dupont Drive  
Irvine, CA 92612  
949.474.4140



**Plantation, Florida**  
101 NW 100th Avenue  
Plantation, FL 33324  
954.577.6294



**Toronto, Canada**  
600 Cochrane Drive, Suite 105  
Markham, Ontario L3R 5K3  
Canada



[www.lutron.com/shadingsolutions](http://www.lutron.com/shadingsolutions)

World Headquarters +1.610.282.3800  
Technical Support Center 1.800.523.9466  
Customer Service/Quotes 1.800.446.1503  
Email: [shadingcustsvc@lutron.com](mailto:shadingcustsvc@lutron.com)

**Interested in earning AIA/CES or GBCI credit?**

Please visit [ce.architecturalrecord.com](http://ce.architecturalrecord.com) to read the article, "Designing Daylight Fixtures," and take a short quiz to earn Continuing Education credits for AIA and GBCI.

© 04/2015 Lutron Electronics Co., Inc. I P/N 367-2502 REV A

