

# WHAT'S NEW 2021

## RESIDENTIAL INNOVATIONS







# A LUTRON HOME IS SANCTUARY

For nearly six decades, Lutron has been a global leader in lighting control. While our technology stands out for its reliability and cutting-edge innovation, that technology rises to another level when it's paired with our meticulous design.

When we created the first solid-state dimmer, technology and design were thoughtfully combined into an ergonomic marvel that changed how we experience light in a space.

And when we pioneered the introduction of quiet automated blinds for the home, we were able to effectively marry seamless control of electric light and natural daylight, providing harmonious control of these two distinct light sources.

We are dedicated to thoughtful design—to creating products that are beautiful, functional and complementary to any home.

But our vision for excellent design also takes into consideration how products will be installed in a home and how they harmonize with the architecture. We reflect on how people live in and love their most personal spaces, then reimagine their day-to-day, so that our solutions contribute to the full potential of a home.

Harnessing the power of light helps achieve that potential, making it the new luxury home differentiator. Light delivers the perfect ambiance, while showcasing rooms and design elements at their best, and ultimately, making a home a sanctuary.

Lutron continues to focus on expanding the market for lighting control and automated blinds to create more opportunity for you. We have put significant effort and energy into delivering high quality products that are integrated by design within Lutron's residential systems offering.

Together, with the next generation of HomeWorks, the world's leading whole-home lighting control system, we've built the complete solution — a seamless environment that is greater than the sum of its parts. Powerful controls. Intelligent blinds. Beautiful light. All working harmoniously.



# CONTENTS

A LUTRON HOME IS PERSONAL

6 **HomeWorks**

8 **RA2 Select**

A LUTRON HOME IS BEAUTY

12 **Lighting Controls**

13 **Fabrics**

15 **Elevated Aesthetics**

A LUTRON HOME IS COMFORT

18 **Sivoia QS Triathlon**

19 **Intelligent Shades**

A LUTRON HOME IS RELIABLE

22 **Integration**

23 **Lutron App Support**

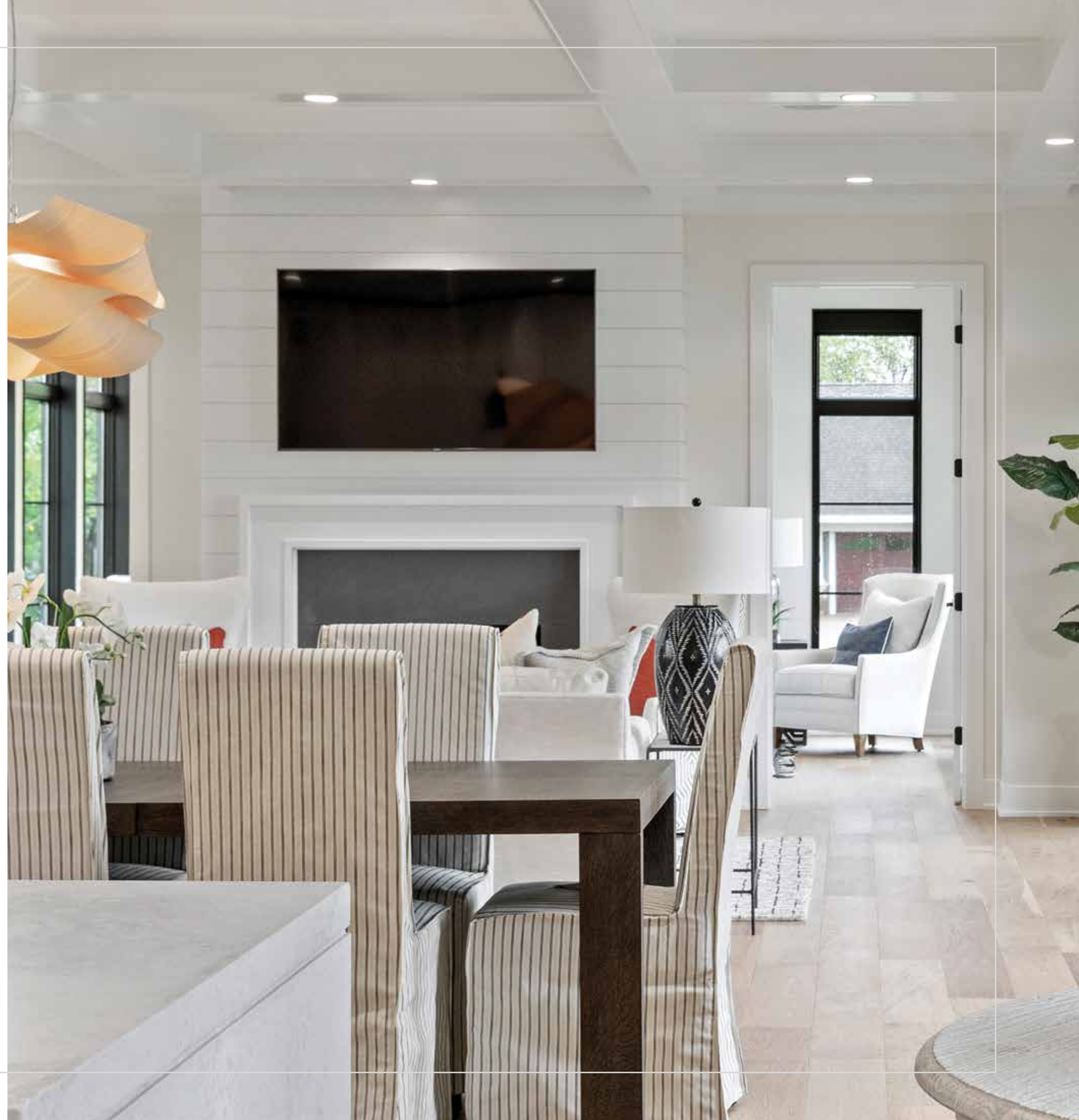
24 **RA2 Select**

25 **HomeWorks**

26 **myLutron**

27 **Specification Tools**

A LUTRON HOME IS FULL OF POSSIBILITIES





A LUTRON  
HOME IS PERSONAL



# WHAT'S NEW IN THE NEXT GENERATION OF HOMEWORKS

## Qsx Processor for Homeworks

### What does it do?

This precisely engineered processor brings together best in class Lutron lighting controls, wall controls and automated blinds. The next generation of HomeWorks raises the bar on creating beautiful light throughout the home.

### What are the features and benefits?

- Increased processing power and memory to manage larger, more complex projects and support future capabilities
- Always up to date — your customers will have the latest capabilities, device support, and security updates
- Securely connects to third-party integration partners with built-in Connect Bridge technology
- Streamlines upgrades from existing HomeWorks QS systems by carrying databases forward
- Mounts on DIN rail

### Available Now



## Adaptive Phase Dimming DIN Module with LED+ Technology

### What does it do?

This phase-selectable DIN module with **LED+** technology is capable of dimming up to a full 2400W circuit of load across four outputs.

### What are the features and benefits?

- **LED+** technology simplifies product selection
- Higher wattage capacity on individual zones
- RTISS-ICM technology withstands LED inrush, bulb blowout, overloads, failed LED drivers and dead shorts
- Compatible with QS and Qsx processors

### Available Now



## HomeWorks Designer

### What does it do?

This software supports next-generation system programming from an interface that feels comfortable and familiar.

### What are the features and benefits?

- Saves programming time by importing project area trees and project details from myProjects
- Supports backing up project files to the cloud for peace-of-mind

### Available Now



## The Lutron App

### What does it do?

The new Lutron App improves your experience with Qsx-based HomeWorks systems by simplifying activation, programming, and service as well as offering expanded integration capabilities.

### What are the features and benefits?

- Support multiple homes with a single app, compatible with Qsx-based HomeWorks, and RA2 Select
- Enables integration with Honeywell Lyric and Ecobee thermostats

### Available Now





# WHAT'S NEW IN RA2 SELECT

## RA2 SELECT LAMP DIMMERS

**What does it do?**

The plug-n-play lamp dimmers allows you to add floor and table lamps to the RA2 Select system.

**What are the options?**

Available in Type F and Type G plug types

Available in Artic White or Black colours

Also available as a kit which includes a lamp dimmer, Pico and pedestal in a convenient box.

**Available Now**



## RA2 SELECT UNIVERSAL SCENE PICO

**What does it do?**

Provides 4 scene buttons with that can be programmed using the Lutron App. The universal icons can be used for any room or location.

**What are the options?**

Available in Artic White or Black colours

**Available Now**







A LUTRON  
HOME IS BEAUTY

# WHAT'S NEW IN LIGHTING CONTROLS

## ALISSE WALL CONTROL

### What does this wall control do?

Alisse delivers simple, elegant, and magical experiences at the touch of a button via HomeWorks. This perfectly balanced, inspired form, is incredibly versatile with a range of curated metal finishes and flexible button configurations to fit the needs of any space.

### What are the features and benefits?

- Balanced, versatile design with single-, double-, and triple-column variations that all mount to the same backbox
- Solid metal plates resistant to wear, fingerprints, and stains
- Clear and precise engraving with contrasting backfill for easy-to-read inscription
- LED halo around button indicates status
- LED color temperature coordinates with the wall control finish
- All new Signature Metal Collection – a range of handcrafted metal finishes and painted metal colors to fit a range of interiors
- 2-piece design enables installation of base unit prior to selecting wall control finish and engraving

### Available Now



# WHAT'S NEW IN FABRICS

For more information and to order individual fabric samples, please visit [lutronfabrics.com](https://lutronfabrics.com)

## LUNA AND LUNA BLACKOUT

### What are the new fabrics?

Luna is a true translucent fabric, perfect for providing privacy but also allowing a soft glow into a space. Luna Blackout is ideal for media room and bedroom applications.

### What are the features and benefits?

- Available in a neutral color palette ranging from bright white to dark grey, with a variety of warm and cool tones
- Coordinating translucent and blackout options
- Introductory price point

### Available Now



## DECORATIVE NEUTRAL ROLLER SHADES

### What are the new fabrics?

This curated offering includes a selection of fabrics with unique textures and beautiful neutral color palettes to enhance any design aesthetic:

**Stratus/Stratus RD** – soft, uniform texture

**Vista** – sheer with natural grasscloth texture

**Mirage/Mirage RD** – weave reminiscent of natural fibers

**Harbor/Harbor BO** – rich decorative weave

A supplemental Decorative Neutral fabric binder is now available to order. Please reach out to your Customer Service Representative to order using the part number DECOFAB-20.

### What are the features and benefits?

- Each family is available in a natural color palette including different white, cream, tan, and grey tones
- Coordinating translucent and room-darkening/blackout options for all families, except Vista
- Variety of textures creates a unique solution for each customer's preference

### Available Now





# WHAT'S NEW IN FABRICS

## AVILA AND AVILA SOLID COLOR REFRESH

### What are the new fabrics?

A refreshed color offering of Avila and Avila Solid

### What are the features and benefits?

- Refreshed color offering for a high-performance blackout fabric
- Avila features a white backing for design uniformity
- Avila Solid features a color-matched backing ideal for exposed roller solutions.

### Available Now



## NEW COLORS FOR POPULAR BASKETWEAVES

### What are the new colors?

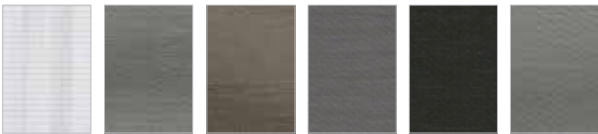
Basketweave 90 – introducing Bright White as a new color offering with all the same configurations of the Basketweave 90 fabrics you're familiar with today.

Basketweave 27 – introducing a range of charcoal-backed fabrics to this dual-sided fabric family.

### What are the features and benefits?

- Familiar, reliable fabrics
- New colors based on specific customer requests
- Brighter white
- Dual-sided options with darker backing

### Available Now



## FUNCTIONAL BEAUTY

### What are the new fabrics?

Verona/Verona RD – nuanced textured pattern in a range of neutral tones, available in sheer and room-darkening options

Sheerweave 8000 – soft linen looks sheer, available in a range of colors from bright white to grey (fire-rated, GREENGUARD Gold certified, Cradle-to-Cradle certified).

Highland RD – elegant, lightly patterned room-darkening fabric available in three colorways with color-matched backing.

### What are the features and benefits?

- Verona, Verona RD and Sheerweave 8000 add a decorative offering as part of The Classico Collection, and are fire-rated and sustainable to meet building specifications

### Available Now



# WHAT'S NEW IN ELEVATED AESTHETICS

## NEW BRACKET FINISHES FOR PALLADIOM SHADING SYSTEM

### What are the new finishes?

Brass, Satin Graphite, and Opal White

### How will this solution help my business?

Architects, designers, and discerning homeowners like to see a wide variety of finish options to complement any interior décor. These new finishes make Palladiom shades a viable option across increasingly more residential designs and styles.

### What are the features and benefits?

These new finishes are available for end, jamb, and center brackets, as well as for extended end and center brackets to support a 3.5" roll-up diameter

**Brass:** A brilliant, warm brass finish that coordinates with copper accents including cabinet pulls, lamp hardware and window and door handles

**Satin Graphite:** A bold, clean finish intended to match commonly used window mullions

**Opal White:** A polished pearlescent finish with a silver-white effect that takes on the warmth of nearby reflected colors and textures

*Note: Not available for decorative covers, or for Palladiom Bottom Rail. Recommended hembar with these new finishes is Half-Wrap Architectural Bottom Bar with metal end caps, where end caps match the bracket finishes.*

### Available Now







A LUTRON  
HOME IS COMFORT



# WHAT'S NEW IN SIVOIA QS TRIATHLON

## WOOD BLINDS WITH NATURAL LIGHT OPTIMIZATION

### What do wood blinds do?

New Triathlon battery-powered wood blinds offer the opportunity to add simple control of natural light with a style that complements every aesthetic, but without the hassle of running wires.

### What are the features and benefits?

- Natural Light Optimization, is a feature of the RA2 Select system which automatically tilts blinds to preset angles throughout the day. Natural Light Optimization lets indirect light in, but keeps harsh glare and UV rays at bay.
- Ultra-quiet motion and precision-tilt positioning technology
- Utilizes Lutron reliable Clear Connect wireless technology
- Sizes available as wide as 182cm (72") and as tall as 182cm (72") for a single blind, with the option to group blinds under one valance up to 243cm (96") wide
- 5cm (2") wood slats hand-crafted from genuine North American Basswood available in 12 stained and 6 painted finishes
- Options include battery-powered, 12V wired, or manual tilt which includes a wand
- Works with RA2 Select, and HomeWorks systems with QSX processors

### Coming



# WHAT'S NEW IN INTELLIGENT SHADES

## SIVOIA QS ROLLER SHADES — NEXT GENERATION ROLLER 64

### What is it?

Introducing the next generation of Roller 64 to our flagship Sivoia QS family. Now available with WIDR technology to cover windows up to 3.6m (12') wide and fit into a small 10cm (4") square pocket.

### What are the features and benefits?

- Shades up to 3.6m (12') wide can fit into a 10cm (4") square pocket using the new WIDR tube – a 30% reduction in the space required.
- Improved sound performance, making this roller family quieter than ever
- Optimized programming interface and wire attachment
- The new 10cm (4") pocket and flap are available in White, Black, Silver, and Bronze
- More compact drive design supports shades as narrow as 45cm (17.5")

### Available Now







A LUTRON  
HOME IS RELIABLE

# WHAT'S NEW IN INTEGRATION

## RING VIDEO DOORBELLS AND SECURITY CAMS NOW WORK WITH RA2 SELECT

### What does this integration do?

Ring doorbells and cams can be quickly configured to trigger selected Lutron-controlled lights to turn on in response to either a doorbell press or camera-motion activation. Setup and customization is done completely through the Lutron App for RA2 Select.

### What are the features and benefits?

- Lutron-controlled lights can be set to turn on to 100% for 15 minutes upon a doorbell press or camera motion, then return to previous levels
- Lights can be triggered at all times, or only at night
- Any doorbell/camera and light combination can be selected

### Coming



# WHAT'S NEW IN LUTRON APP SUPPORT

## PRO INSTALLER MODE

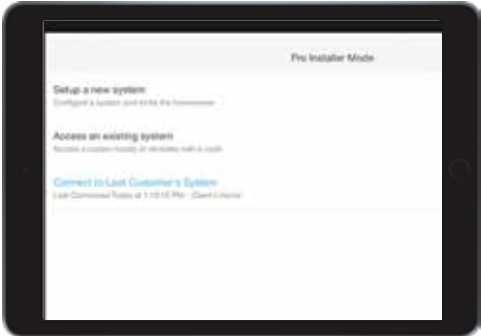
### What does PRO Installer Mode do?

Pro Installer Mode in the Lutron App provides a streamlined RA2 Select, and HomeWorks installation experience for professional installers, with app features designed to improve efficiency during and after the installation process.

### What are the features and benefits?

- Redeem a unique one-time passcode to remotely access and troubleshoot a homeowner's system
- Use your own smart device for setup instead of the homeowner's smartphone
- Save time typing – Pro Installer Mode pulls your information from myLutron to eliminate the hassle of typing your name, phone number, email, and Lutron PRO account number (when applicable)

### Coming





# WHAT'S NEW IN RA2 SELECT

## RA2 SELECT APP UPGRADES

### What is it?

We have added multi-home support to the RA2 Select apps.

### What are the features and benefits?

- Users who have invested in RA2 Select system can now scale Lutron into more areas of their home and add shades without worrying about the device limit
- The user can have a RA2 Select system in his primary home and HomeWorks in his vacation home, and still manage everything through a single account so multiple log-ins are not required

### Available Now



## BATTERY ALERTS FOR SHADES, SENSORS, AND PICO REMOTES IN RA2 SELECT

### What do these alerts do?

Enables a homeowner to track the battery status of shades, sensors, and Pico remotes in RA2 Select systems.

### What are the features and benefits?

- Alerts the homeowner when Pico remotes, sensors, and Triathlon shades have low battery levels so they can be replaced before they stop working.

### Available Now



## EXTENDED SOLAR SCHEDULING RANGE

### What's the extended range?

The relative time range programming has been extended from 2 to 4 hours.

### What are the features and benefits?

- Set more personalized schedules for natural light or solar heat gain control
- Provides more flexibility and alignment with sun positioning instead of time of day

### Coming



# WHAT'S NEW IN MYLUTRON

## POWERFUL BUSINESS ETOOLS

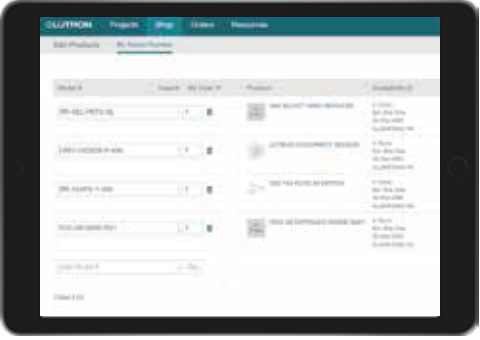
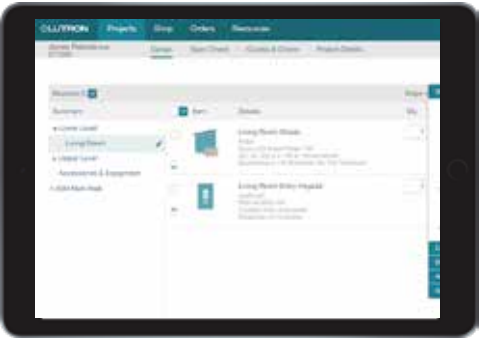
### What does myLutron do?

myLutron is a suite of connected tools including myProjects, myOrders and myResources making it easier to do business with Lutron.

### What are the features and benefits?

- myLutron Resources: One-stop access to all resources needed to educate, sell, market, specify, and design Lutron systems
- myProjects and myOrders:
  - Quickly design, quote, order, and track all Lutron products
  - Configure and order all products including shades, and HomeWorks
  - Electronically request pricing from your distributor
  - Quickly generate proposals for your clients
  - Import your specification work from AutoCAD into myProjects and eventually into the HomeWorks Designer software.
  - myOrders Digest – receive email notifications with the status of your open orders

### Coming



# WHAT'S NEW IN SPECIFICATION TOOLS

## BLUEBEAM/AUTOCAD TOOLSETS AND REVIT FILES

### What do these tools do?

The AutoCAD tool sets allow the user to drop Lutron product symbols onto any floorplan and export a .csv file that can be easily imported into Lutron myProjects software, reducing duplication of efforts.

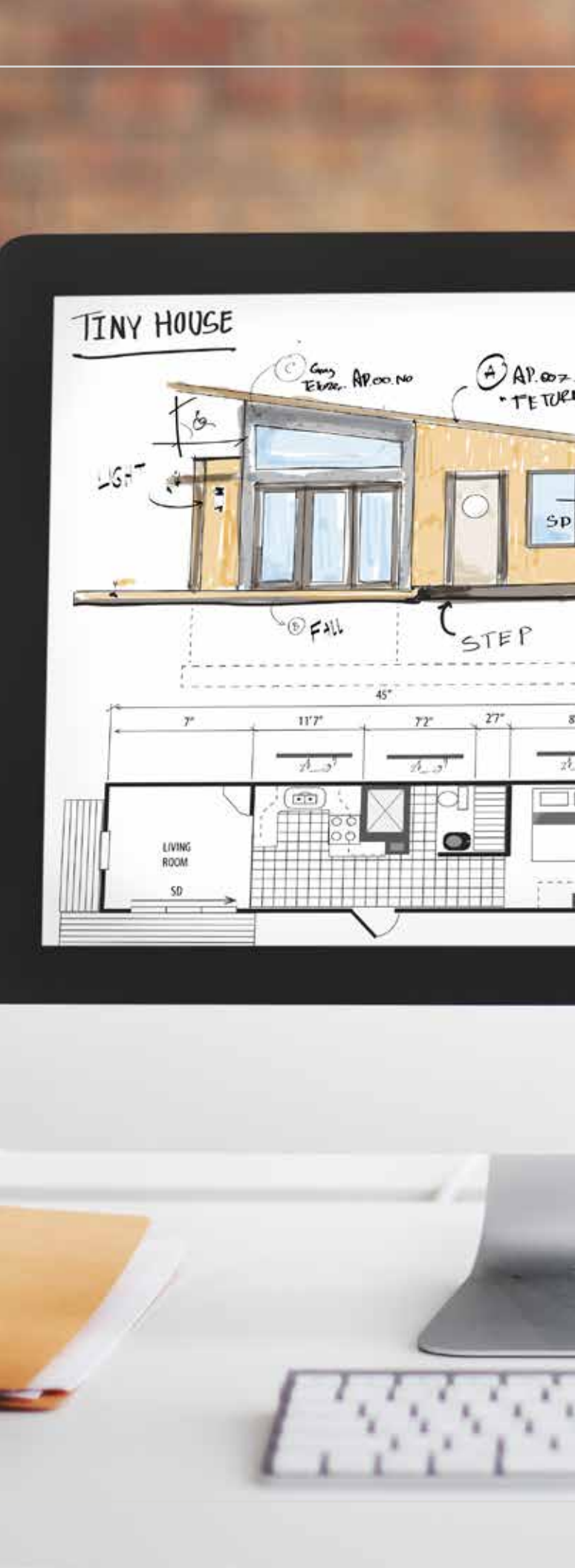
The Revit files allow Lutron product drawings to be placed into construction documents where the physical dimensions of the product are needed for layout.

### What are the features and benefits?

- Expand your efforts and surround every job with a Lutron spec by creating awareness of these new tools with the architects and designers in your area
- Empowers the specification community with digital drawing tools in popular formats

Toolsets and application notes available on [lutron.com](http://lutron.com), and [luxury.lutron.com](http://luxury.lutron.com)

### Available Now





# A LUTRON HOME IS FULL OF POSSIBILITIES

Our breadth of line is synonymous with possibility. We have a solution for every customer, designed to support your efforts to make that customer's home a sanctuary.

Clients rely on you to create, design, and execute personalized experiences. Our products empower you to do just that. Light is our motivation. You are our inspiration.





© 03/2021 Lutron Electronics Co., Inc. | P/N 367-2808/HK REV A

Lutron, the Lutron logo, Alisse, Finiré, HomeWorks, Radio RA 2, RA2 Select, and Sivoia QS Triathlon are trademarks or registered trademarks of Lutron Electronics Co., Inc., in the U.S. and/or other countries.

All other product logos, names, and brands are property of their respective owners.