





# Athena



An uncompromising solution. The Athena lighting control system empowers architects, lighting designers, and electrical engineers with a native network of lighting, lighting controls, blinds, and cloud-connected software that delivers exceptional experiences and building management.



# An Uncompromising Solution

## Scalable

High-rise offices. College campuses. Five-star resorts.



Lutron's wireless technology and modular data system form a foundation for nimble, next-gen scalability.

## Adaptable

Meet property needs over time.



Design freedom during specification, customised conference halls for events, and lighting shifts to meet plan changes—all without rewire.

## Streamlined

Maximise efficiency. Minimise disruptions.



Wireless technology and cloud-powered workflows simplify specification, accelerate construction, and lay the groundwork for future system updates and expansion.



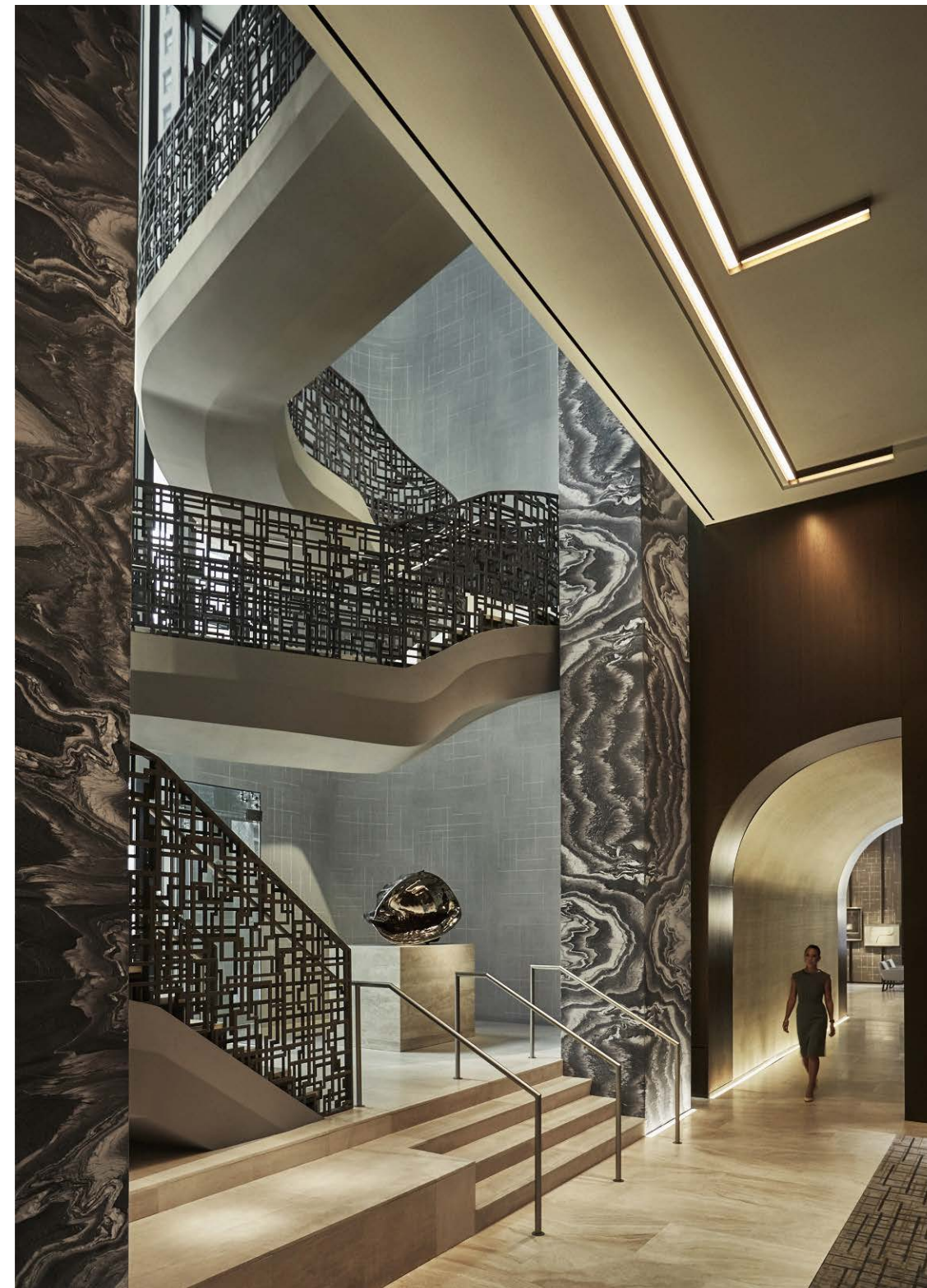
# Applications

Athena is designed to take on the most demanding projects on the globe, from architectural offices and hotels to universities and hospitals. Cloud connection takes Athena's powerful system to greater heights, providing radically simplified building management in a single platform.



## Offices

Give everyone a window seat. Set blinds to perfectly balance natural and artificial light throughout your office. Promote well-being with light that shifts in colour and intensity throughout the day.



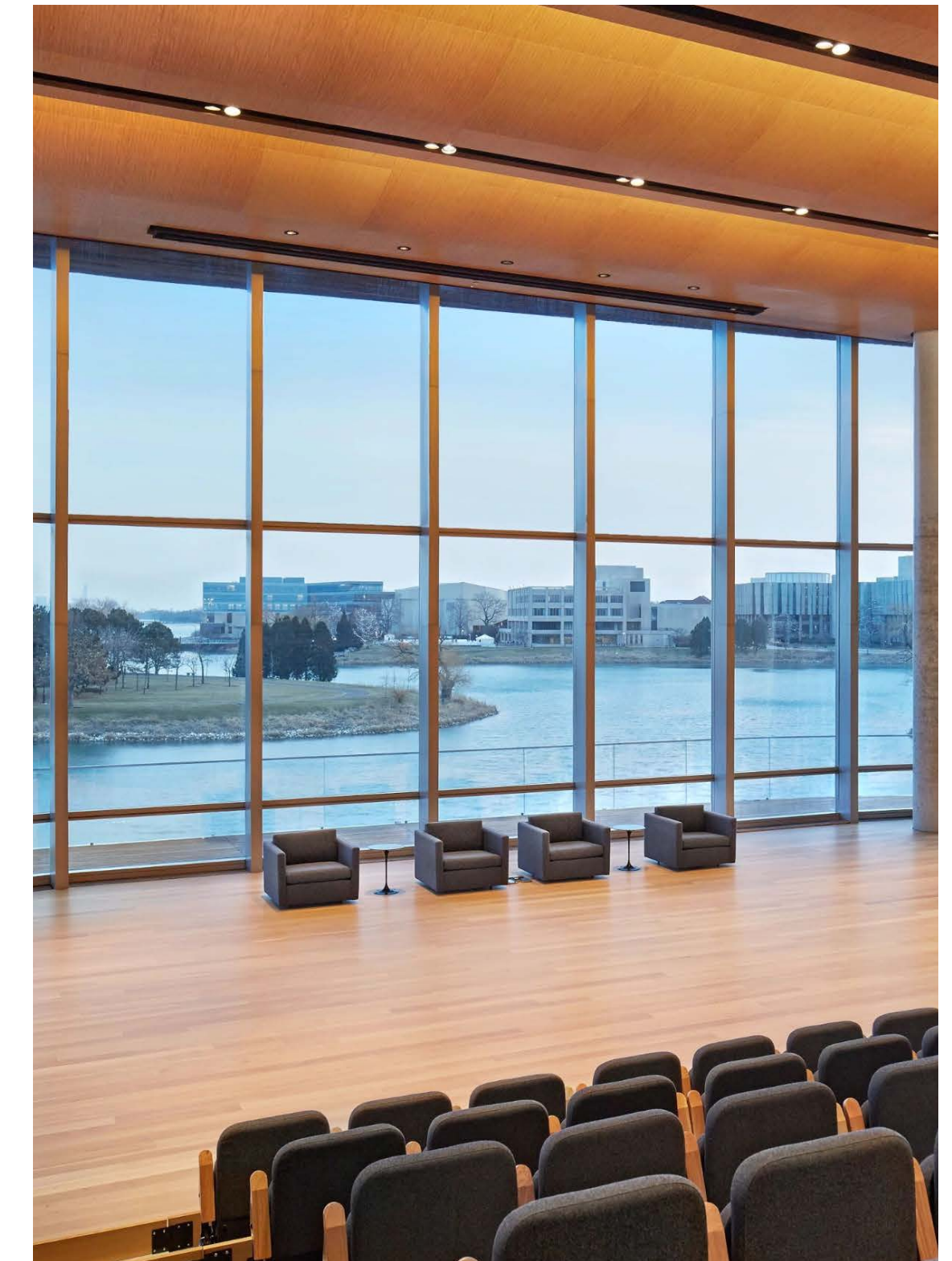
## Hospitality

Design restaurants, fitness centres, and social spaces that inspire engagement and support well-being with the Athena lighting system.



## Retail

Show merchandise in its best light with dynamic light control of both intensity and colour temperature. Create visual interest by utilising the fixture selection of your choice, all controlled by one system.



## Higher Education

Dial in the perfect light for any university, lecture hall, or classroom with wireless controls that are simple, scalable, and integrate seamlessly with lighting retrofits—meeting code every step of the way.

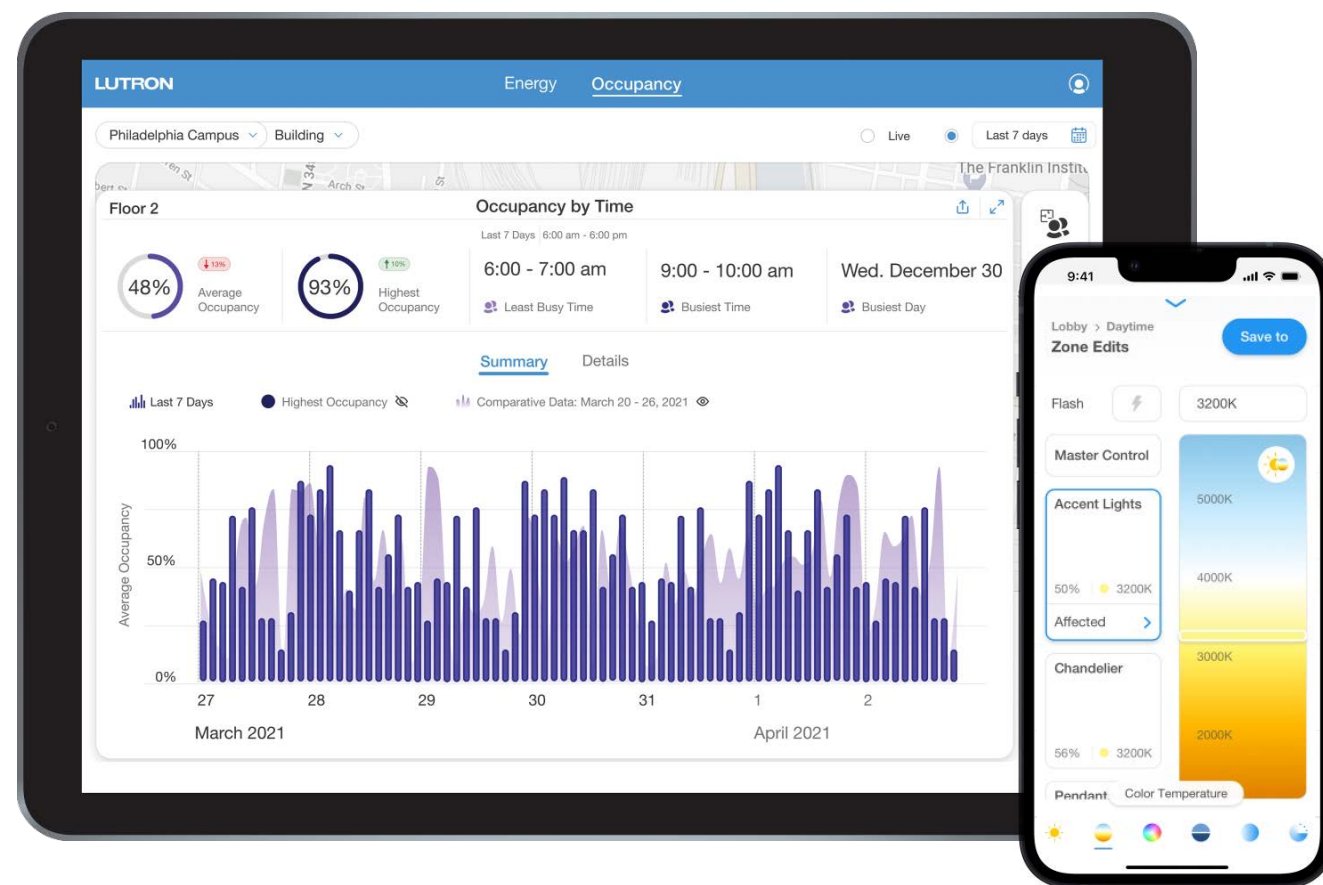


# Technology Overview

Athena's built-from-the-ground-up modular data system creates the building blocks for scalability. A cloud-connected back end provides continuous software updates, so Athena gains breakthrough features and functionality over time, while rigorous encryption protocols ensure the system is always bank-grade secure.

## Software

Streamlined building management—at scale



A suite of apps and interfaces deliver palm-of-your-hand control and data-driven insights at a glance.

## Integrations

Smart connectivity for all-in-one system control



Responsive, reliable, and secure third-party integrations, including BACnet/IP and Lutron's secure API.

## Security

Built for mission-critical environments



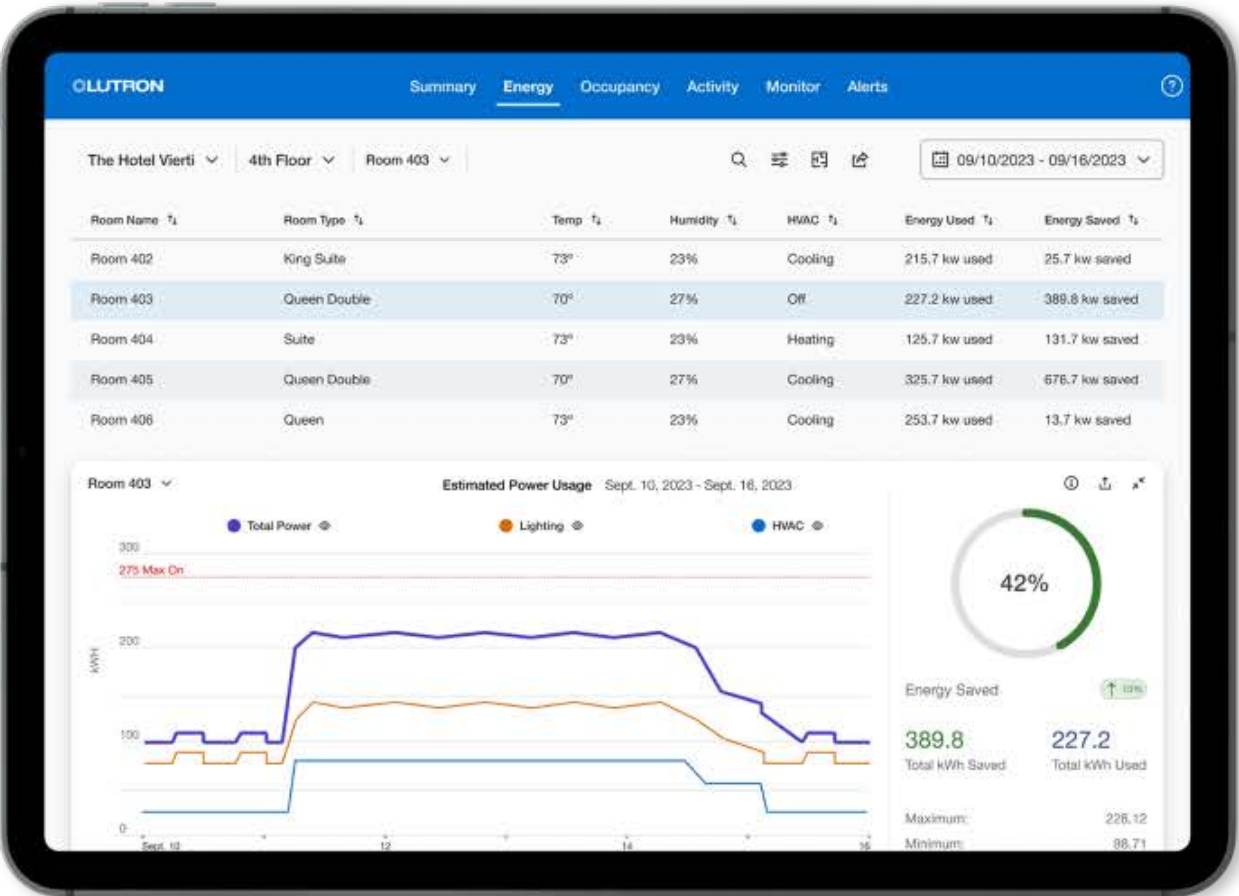
All updates are encrypted and authenticated by Lutron using bank-grade protocols, with industry-leading, third-party verification.



# Lutron Dashboard

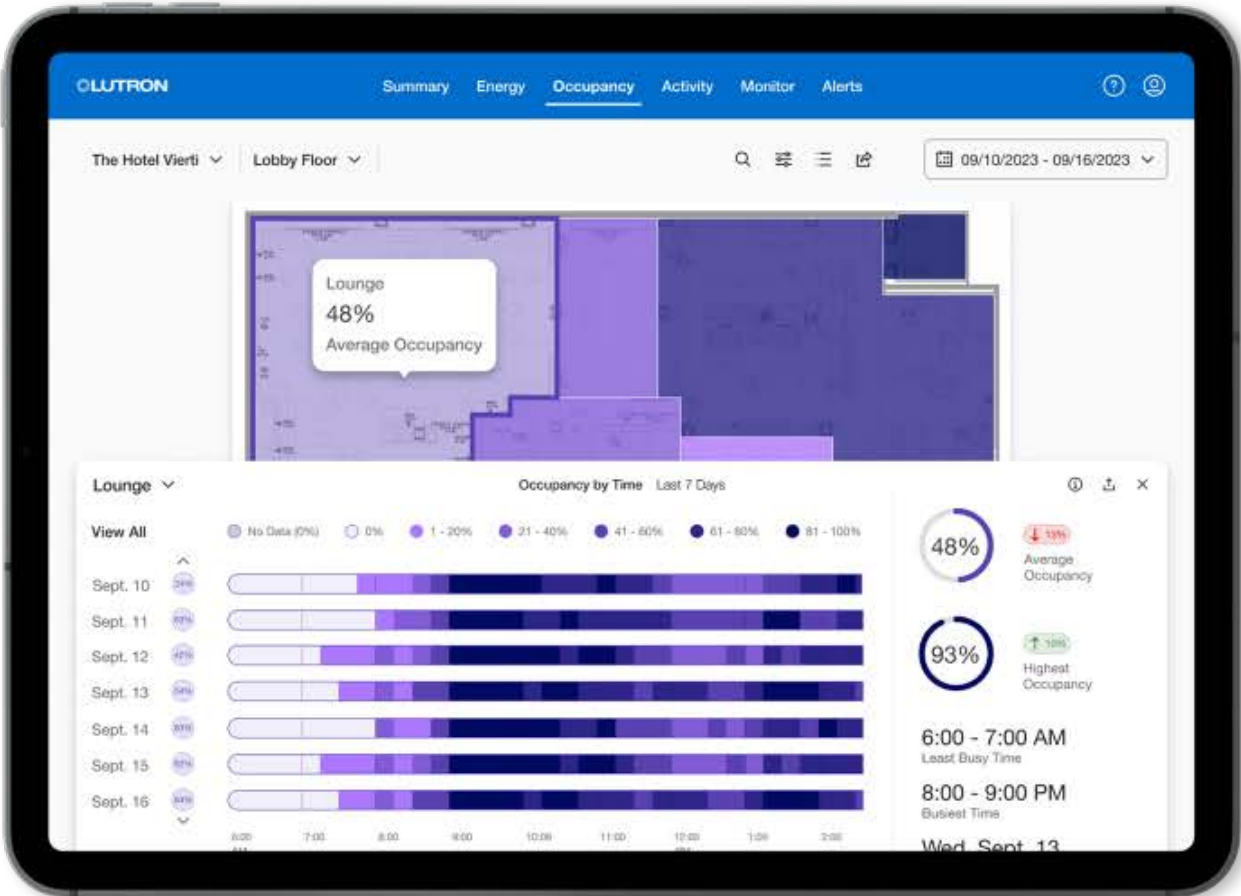
Turn cloud-collected data into actionable insights to manage your entire property at scale. Track energy consumption, identify space utilisation patterns, and swiftly address system issues to keep your property running smoothly.

## Save Energy



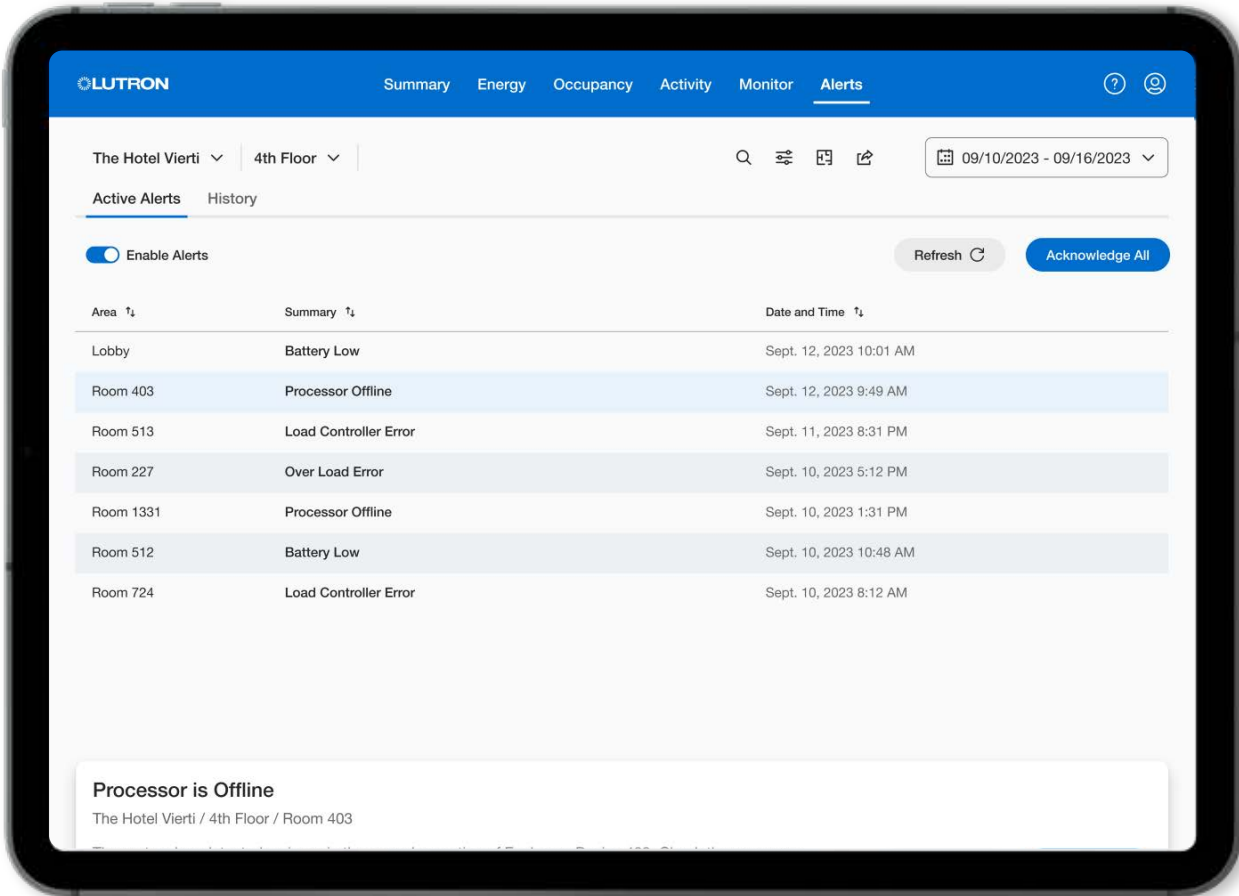
Access actionable data by building, floor, and room to enhance energy efficiency.

## Optimise Space Use



Compare room-performance trends to make strategic real-estate and space-use decisions.

## Alerts & DALI Emergency Monitoring



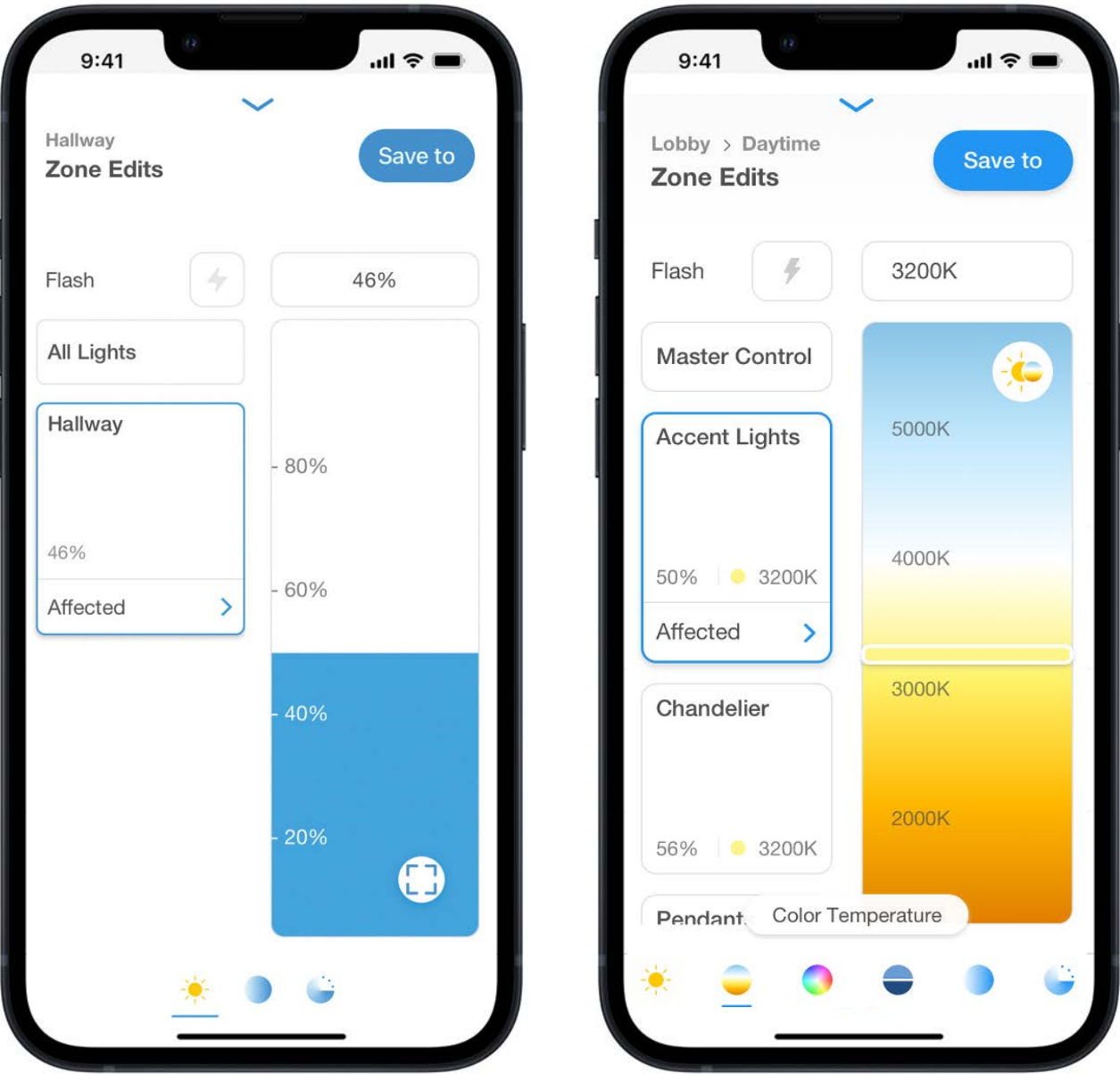
Maximise uptime – system alerts and notifications help you to anticipate and quickly troubleshoot issues, including DALI emergency monitoring.



# Lutron App

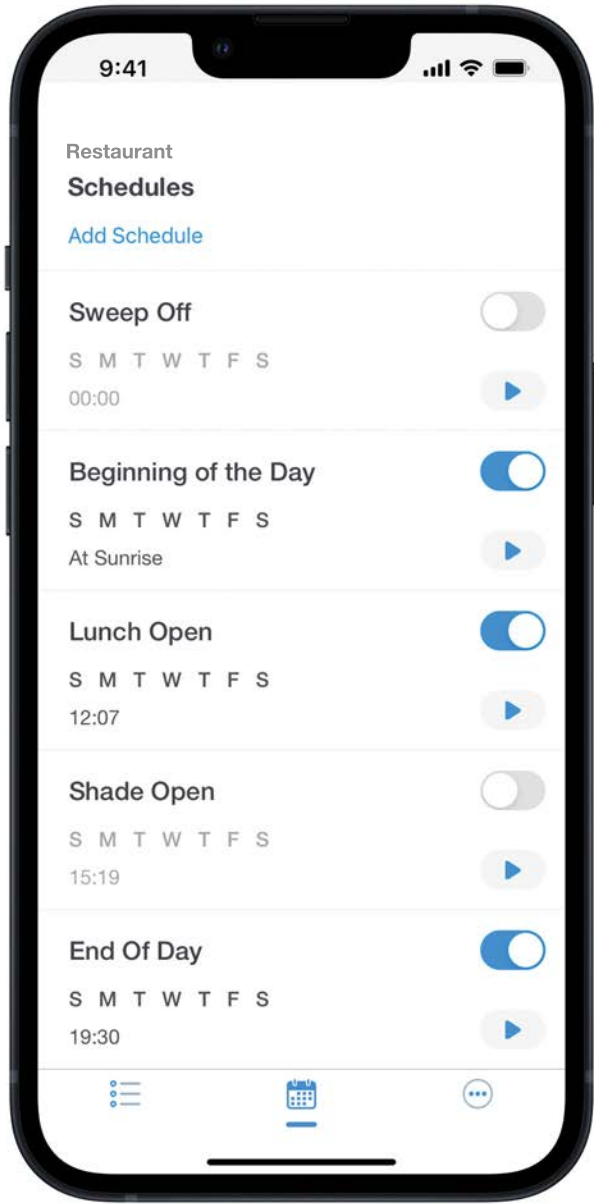
Create sophisticated lighting experiences with powerful, palm-of-your-hand control. Program lighting in real-time, from a desk or on the go.

## Customise Programming



Customise lighting levels, colour temperature, and saturated colour for extraordinary, personalised events.

## Create Schedules



App-based control ensures property managers can focus on lighting scenes and schedules.

## Simplify Setup



Programming is intuitive and limited only by your imagination. Easily fine-tune, edit, and save lighting scenes.



# System Integrations

A/V, climate control, and property management systems integrate seamlessly with the Athena system. BACnet/IP brings broad compatibility, while Lutron's secure API keeps your system safe.

## Audio/Visual (via API)

---

**Extron**

**CRESTRON**

**Q-SYS**

**UIC**

Coming Soon!

**RTI**  
It's Under Control®

## Building Integration (via API)

---

**Johnson Controls**

**NOMAD GROUP**

Coming Soon!

Coming Soon!

## Building Integration (via BACnet)

---

**Schneider Electric**

**TRANE**

**SIEMENS**

**TRIDIUM**

**Johnson Controls**

**Automated Logic**





# Architected for Natural Light

Foster well-being throughout the interior, emphasise connection to the outdoors, and improve building efficiency with dynamic, day-synchronised light and blind control. The Athena system works with Lutron automated blinds and Athena wireless nodes to make gradual, real-time changes to light colour, intensity, and blind position in order to emulate the cycles of the sun.



## Solar Blind Automation

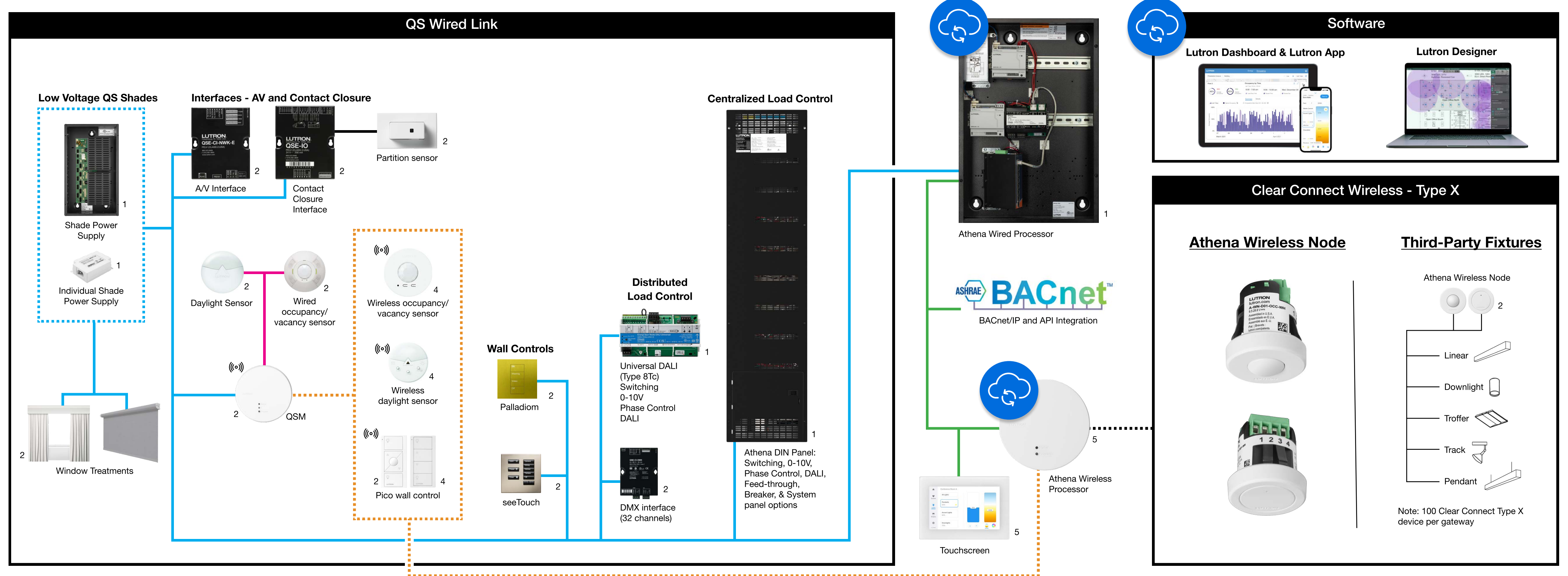
Automated blinds fine-tune daylight by moving in response to the position of the sun, preserving views of the outdoors while mitigating glare and reducing thermal gain.

## Tunable White Automation

Use the Athena wireless node to synchronise the colour temperature and intensity of electric light with the cycles of daylight.



# Athena Hybrid Wired and Wireless System Architecture



## Athena System Capacities

- 16 Athena processors (max per system)
- 1600 Athena processors (max per building)

Note: Not all available products shown

- QS wired link**  
4-wire RS-485 link, 24-35V
- Wired Sensor link**  
3-wire link, 20V
- Clear Connect Wireless**
- Ethernet link**

## QS Wired Link

- 610 meters maximum wire length (consult technical specs for other applicable rules)
- Free-wire topology (star, daisy chain, home run, etc.)
- Standard Lutron conductor cable
- See Lutron document 369596 for specifications



## Internet Connected Device

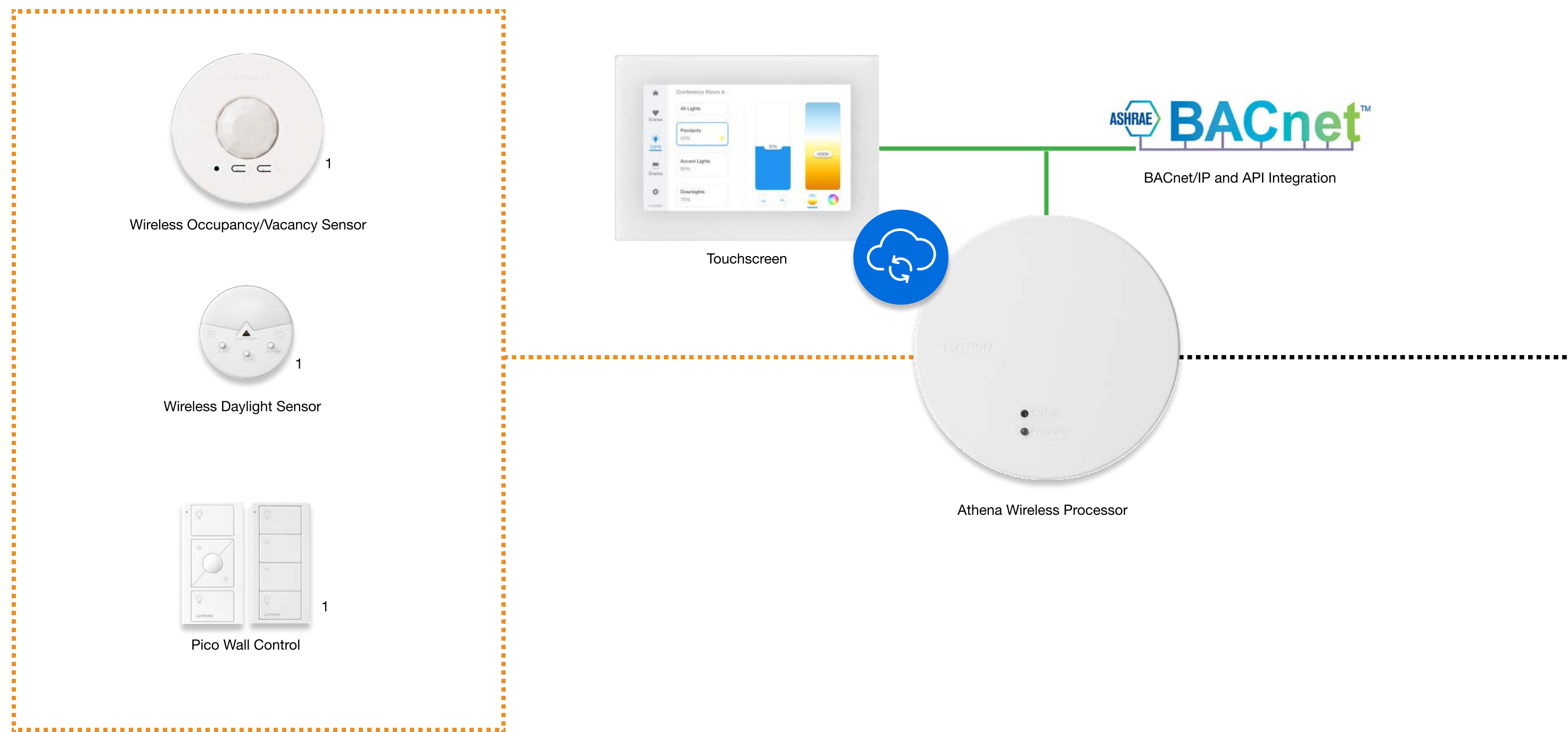
Internet connection allows for cloud-connectivity via the Lutron Dashboard and App from anywhere in the world, as well as security patches, bug fixes, feature updates, and faster flexible support.

## Power

1. Line voltage VAC
2. Low voltage VDC
3. Battery powered
4. Power over Ethernet (PoE)



# Athena Wireless System Architecture



**Software**

**Lutron Dashboard & Lutron App**

**Lutron Designer**

**Clear Connect Wireless - Type X**

**Athena Wireless Node**

**Third-Party Fixtures**

Note: 100 Clear Connect Type X device per gateway

## Athena System Capacities

- 16 Athena processors (max per system)
- 1600 Athena processors (max per building)



## Clear Connect Wireless Ethernet link



## Internet Connected Device

Internet connection allows for cloud-connectivity via the Lutron Dashboard and App from anywhere in the world, as well as security patches, bug fixes, feature updates, and faster flexible support.

## Power

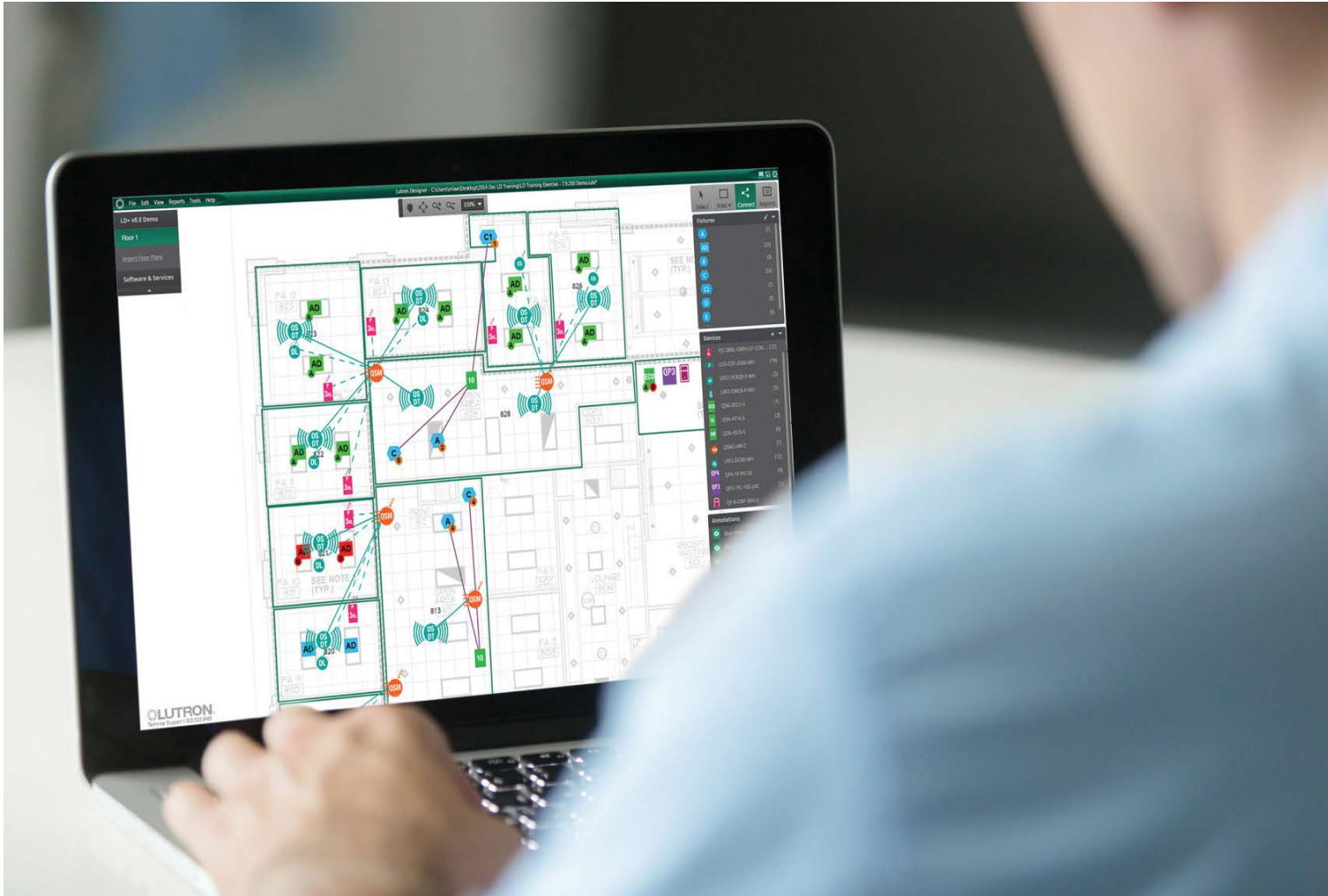
1. Power over Ethernet (PoE)

Note: Not all available products shown



# The Service Difference

A lifetime of support—Lutron stays with you every step of the way. From design and installation to operation and upgrades, our project managers and factory-trained, regional technicians provide peace of mind and service for the full life-cycle of your Lutron solution.



## Pre-Construction

Lutron’s service experts provide design expertise, technical support, and project management during the design phase—ensuring the project is tuned to your needs and budget, providing documentation requirements, and coordinating with contractors.



## During Build

Simplify and streamline the installation and startup process. Lutron’s field service team provides technical, onsite support during construction to mitigate risk, minimise delays, and guide your team through startup.



## Post-Occupancy

Once your system is set up, schedule a team training and regular maintenance visits. Our technicians offer upgrade planning throughout the system’s life cycle, so Athena gains new capabilities over time.



Want more Information? Have a question?



[Visit Athena page](#)



[Visit Athena spec page](#)

Photo credits: Cover, © Maurício Moreno; Page 4 L to R, © Jake Holt Photography, Christian Horan Photography, © Bruce Damonte, and ©John Muggenborg; Page 8, © Chris Cooper; Page 9, © Jake Holt Photography

© 10/2024 Lutron Electronics Co., Inc. | P/N 368-6671/UK REV B

Lutron, the Lutron logo, Alena, Architrave, Athena, Clear Connect, Energi Savr Node, HomeWorks, myRoom, Palladiom, Pico, Radio Powr Savr, RadioRA 3, SeeTouch, and Sivoia QS are trademarks or registered trademarks of Lutron Electronics Co., Inc., in the U.S. and/or other countries.

