

## Finiré 3" LED Round Adjustable Downlights

### PRODUCT DESCRIPTION

Ivalo recessed LED downlight delivering high-quality 95+ CRI LEDs, and Lutron 0.1% static white.

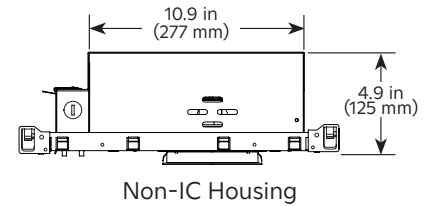
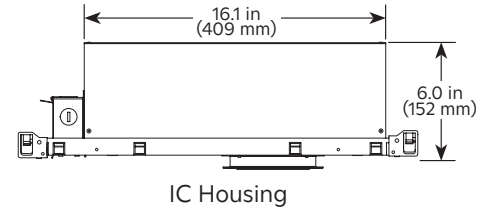
### FEATURES

**High-Performance 0.1% or 1% Dimming**—Highest-quality dimming and 95+ CRI LED light performance fixture that comes standard with new HomeWorks 0.1% digital controllers. Guaranteed flicker-free dimming via Lutron controls. Backed by 24/7 customer-first service and support.

**Intelligent and Digitally Addressable**—HomeWorks digital technology allows you to individually address each fixture, letting you easily reconfigure lighting zones to accommodate changes in the space (like rearranged furniture) without rewiring.

**Static White and Warm Dim Options**—Choose traditional 2700K, 3000K or 3500K white LED colors or warm dimming if you have a preference for lighting that shifts to a warm amber color as it dims. This feature can be difficult to render naturally, but Finiré’s warm dimming offers an incandescent-like experience that dims smoothly from 2700K or 3000K down to 1800K.

**Ultimate Flexibility**—To reduce risk and maximize flexibility, choose the Finiré 3" adjustable fixture, which can be converted to a fixed or wall wash downlight.

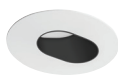


### OPTIONS

#### Flanged



Adjustable



Adjustable  
(Slotted) Pinhole

#### Flangeless

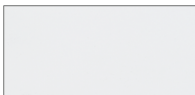


Adjustable



Adjustable  
(Slotted) Pinhole

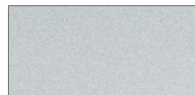
### Finish



Matte White <sup>1</sup>



Matte Black <sup>1</sup>



Silver <sup>1</sup>



Bronze <sup>1</sup>



Silver / White <sup>2</sup>



Clear Anodized /  
White <sup>2</sup>



Clear Chrome /  
White <sup>2</sup>



Black Chrome /  
White <sup>2</sup>

<sup>1</sup> Matte White, Matte Black, Silver and Bronze are coordinated color finishes to match Finiré Prime and Ketra D3 downlights.

<sup>2</sup> White flange standard with flanged trims.

## FINIRÉ 3" LED ROUND ADJUSTABLE DOWNLIGHTS

### SPECIFICATIONS

#### Optical Performance

<b>Delivered Lumens</b>	Up to 1100 lm (typical) for IC and 1750 lm (typical) for Non-IC fixtures
<b>Size</b>	15° narrow spot available. 30°, 40°, and 55° reflectors are field replaceable for standard and high-output fixtures
<b>CRI (Ra)</b>	Xicato® LEDs: 97 CRI, R9=95 (typical)
<b>Lumen Maintenance</b>	50,000 hours rated LED system life (LED and controllers)
<b>Color Point Range</b>	Fixture to fixture consistency, 1 × 2 step MacAdam Ellipse
<b>Dimming Range</b>	Included Lutron LED controllers deliver continuous, flicker-free dimming from 100% down to 1% or 0.1% of measured light output

#### Environmental

<b>Ambient Temperature</b>	32 – 104 °F (0 – 40 °C) <sup>2</sup>
<b>Decibel Rating</b>	Quiet in a 25 dB room Certification
<b>Certification</b>	IC housings meet airtight construction requirements for 2.0 CFM or less air leakage and are rated for spray foam applications <sup>1</sup>
<b>Location</b>	UL Damp Location, UL Wet Location (shower) available with Trim Lens. Plenum rated option available <sup>2</sup>
<b>Indoor / Outdoor</b>	Outdoor use available for residential enclosed/covered patio applications. Trim lens required
<b>Warranty</b>	5 year fixture, LED, and dimming warranty

#### Mechanical

<b>Housing</b>	IC and Non-IC options. IC fixtures must be used for installations containing insulating materials. Non-IC fixtures cannot be used in this type of application <sup>1</sup>
<b>Housing Material</b>	Housings finished with black powder coat and constructed of 20 gauge steel
<b>Lens Material</b>	Glass
<b>Trim</b>	Variety of trim options including flangeless millwork (wood/stone ceilings). <sup>3</sup>
<b>Adjustability</b>	0° to 40° tilt in 5° increments and 362° rotation
<b>Mounting Options</b>	Supplied with standard 14 in to 24 in (356 mm to 610 mm) adjustable bar hangers. Optional 9.5 in to 15 in (241 mm to 381 mm) bar hangers available
<b>Field Replacable Componets</b>	Drivers (Controllers), Trim, Lens, and LED

#### Electrical

<b>Voltage</b>	120 V~ 60 Hz
<b>Power consumption</b>	17 W / 29 W

#### Dimensions

<b>Maximum Ceiling Thickness</b>	2.0 in (51 mm)
<b>Mud-In Retainer Thickness<sup>1</sup></b>	0.093 in (2.4 mm)
<b>Ceiling Cutout</b>	ø 4.1 in (ø 104 mm)
<b>Fixture Weight</b>	7.2 lb (3.3 kg) Non-IC, 8.9 lb (4.1 kg) IC
<b>Fixture Dimensions</b>	IC: 18.9 in x 9.5 in x 6.0 in (480 mm x 241 mm x 152 mm) Non-IC: 13.6 in x 9.5 in x 4.9 in (345 mm x 241 mm x 125 mm)
<b>Junction Box</b>	5.6 in x 3.0 in x 1.6 in (143 mm x 76 mm x 41 mm). See NEC® chart 314.16A for box fill/wiring capacity

<sup>1</sup> Rated for direct application of spray foam with less than R-21 insulative value or 3 in (76.2 mm) of closed cell spray foam. 95 °F (35 °C) maximum operating temperature.

<sup>2</sup> Plenum rated option is Chicago rated for use in air handling plenums.

<sup>3</sup> For additional details please see the Finiré 3" Installation Instructions (P/N 377-2578) at [www.lutron.com](http://www.lutron.com)

## FINIRÉ 3" LED ROUND ADJUSTABLE DOWNLIGHTS

### ORDERING GUIDE

Please download this PDF to use the interactive drop down features of the ordering guide.

#### Base Unit Configuration

#### Trim

Product Line      Power Consumption      CCT      Beam Angle

Trim

Control System      Mounting      Ceiling Type

Finish      Lens      Options

Order code: \_\_\_\_\_

Order code: \_\_\_\_\_

Product Line	Code	CCT	Code	Trim	Code
Finiré 3 in Flanged IC Round Adjustable	<b>FAT3RI</b>	2700 K	<b>27</b>	Round Flanged Adjustable	<b>RTA00</b>
Finiré 3 in Flanged Non-IC Round Adjustable	<b>FAT3RN</b>	3000 K	<b>30</b>	Round Flangeless Adjustable	<b>RZAOO</b>
Finiré 3 in Flangeless IC Round Adjustable	<b>FAZ3RI</b>	3500 K	<b>35</b>	Round Flanged Fixed	<b>RTDOO</b>
Finiré 3 in Flangeless Non-IC Round Adjustable	<b>FAZ3RN</b>	<b>Beam Angle</b>		Round Flangeless Fixed	<b>RZDOO</b>
		15° (small) (NS LED Type only) <sup>3</sup>	<b>15</b>	Round Pinhole (Slotted) Adjustable <sup>9,10</sup>	<b>RTSOO</b>
		30° (medium) <sup>3</sup>	<b>30</b>	Round Flangeless Pinhole (Slotted) Adjustable <sup>9,10</sup>	<b>RZSOO</b>
Finiré 3 in Flanged IC Round Infinite Adjustable	<b>FIT3RI</b>	40° (flood) <sup>3</sup>	<b>40</b>	<b>Finish</b>	
Finiré 3 in Flanged Non-IC Round Infinite Adjustable	<b>FIT3RN</b>	55° (wide flood) <sup>3</sup>	<b>55</b>	Matte White	<b>MW</b>
Finiré 3 in Flangeless IC Round Infinite Adjustable	<b>FIZ3RI</b>	<b>Control System</b>		Matte Black	<b>BL</b>
Finiré 3 in Flangeless Non-IC Round Infinite Adjustable	<b>FIZ3RN</b>	0.1% HomeWorks Digital 120 V~ <sup>4</sup>	<b>H0</b>	Silver <sup>11</sup>	<b>SI</b>
		1% HomeWorks Digital 120 V~ <sup>5</sup>	<b>H1</b>	Bronze <sup>11</sup>	<b>RB</b>
		<b>Mounting</b>		Clear Anodized / White <sup>12</sup>	<b>CA</b>
		Standard Hanger Bars 14 in to 24 in (356 mm to 610 mm)	<b>XX</b>	Clear Chrome / White <sup>12</sup>	<b>CC</b>
		Narrow Joist Hanger Bars 9.5 in to 15 in (241 mm to 381 mm)	<b>NJ</b>	Silver / White <sup>11,12</sup>	<b>SW</b>
		<b>Ceiling Type</b>		Black Chrome / White <sup>9,11</sup>	<b>BC</b>
		Standard 1/2 in to 5/8 in (13 mm to 16 mm)	<b>XX</b>	<b>Lens</b>	
		Flangeless Thick Ceiling >5/8 in to <2 in (>16 mm to <51 mm) <sup>6</sup>	<b>TT</b>	None	<b>XX</b>
		Flangeless Millwork (Wood/Stone) Ceiling <sup>7</sup>	<b>TW</b>	Frosted <sup>13</sup>	<b>FG</b>
		Plenum Rated <sup>8</sup>	<b>PL</b>	Solite™ Glass <sup>13</sup>	<b>SO</b>
				Wall Wash <sup>13,14</sup>	<b>WW</b>
				<b>Options</b>	
				None	<b>XX</b>
				Thick Ceiling <sup>15</sup>	<b>TC</b>

<sup>1</sup> All wattage, lumen, and CRI values are typical values, tested with Matte White trims. For exact values reference the photometric data on page 3 or contact Fixture Customer Service.  
<sup>2</sup> Available in Non-IC fixture type only.  
<sup>3</sup> For field replacement details, contact Lutron customer service.  
<sup>4</sup> Compatible with XX, NS, and HO LED Types.  
<sup>5</sup> Compatible only with HP LED Type.  
<sup>6</sup> For ceiling thicknesses greater than 5/8 in (16 mm) but less than 2 in (51 mm). Exact ceiling thickness must be specified during order entry.  
<sup>7</sup> For wood/stone flangeless options, use flangeless housing and standard flangeless trim. For additional details please see the Finiré 3" Installation Instructions (P/N 377-2578) at [www.lutron.com](http://www.lutron.com)  
<sup>8</sup> Plenum rated option is Chicago rated for use in air handling plenums.  
<sup>9</sup> Pinhole trims come in Matte White, Matte Black, Silver, or Bronze with Black inside baffle.  
<sup>10</sup> Solite™ lens recommended for pinhole trim.  
<sup>11</sup> Painted finish.  
<sup>12</sup> Clear Chrome, Silver/White, and Clear Anodized trims come with a Matte White flange standard for flanged options.  
<sup>13</sup> All Frosted and Solite™ lens options are wet location rated.  
<sup>14</sup> Only for use with adjustable trims. Recommended with 40° beam spread at 40° tilt angle.  
<sup>15</sup> For ceiling thickness greater than 5/8 in (16 mm) but less than 2 in (51 mm). For additional details please see the Finiré 3" Installation Instructions (P/N 377-2578) at [www.lutron.com](http://www.lutron.com)

For Title 24 compliant model numbers or for more information, please contact Lighting Technical Support at [lightingsupport@lutron.com](mailto:lightingsupport@lutron.com) or 1.844.LUTRON1 (1.844.588.7661)

## FINIRÉ 3" LED ROUND ADJUSTABLE DOWNLIGHTS

### COMPONENT ORDERING GUIDE

Please download this PDF to use the interactive drop down features of the ordering guide.

#### Rough-in Housing

Order code: \_\_\_\_\_

#### LED Module & Driver Kit

Order code: \_\_\_\_\_

#### Replacement Reflector

Order code: \_\_\_\_\_

<u>Rough-in Housing</u>	<u>Code</u>	<u>LED Module &amp; Driver Kit</u>	<u>Code</u>	<u>Replacement Reflector</u>	<u>Code</u>
Adjustable Round IC Housing	<b>FAR3RI</b>	Standard IC LED Module Driver Kit	<b>F3I-LMXX</b>	15° Reflector Narrow Spot	<b>F3NS15-KIT</b>
Infinite Adjustable Round IC Housing	<b>FIR3RI</b>	High Output IC LED Module Driver Kit	<b>F3I-LMHO</b>	30° Reflector Standard	<b>F3XX30-KIT</b>
Adjustable Round Non-IC Housing	<b>FAR3RN</b>	Standard Non-IC LED Module Driver Kit	<b>F3N-LMXX</b>	40° Reflector Standard	<b>F3XX40-KIT</b>
Infinite Adjustable Round Non-IC Housing	<b>FIR3RN</b>	High Output Non-IC LED Module Driver Kit	<b>F3N-LMHO</b>	55° Reflector Standard	<b>F3XX55-KIT</b>
		High Plus Non-IC LED Module Driver Kit <sup>1</sup>	<b>F3N-LMHP</b>	30° Reflector High Output	<b>F3HO30-KIT</b>
				40° Reflector High Output	<b>F3HO40-KIT</b>
				55° Reflector High Output	<b>F3HO55-KIT</b>
				30° Reflector High Output Plus	<b>F3HP30-KIT</b>
				40° Reflector High Output Plus	<b>F3HP40-KIT</b>
				55° Reflector High Output Plus	<b>F3HP55-KIT</b>

<sup>1</sup> Available in Non-IC Housing type only

#### **OPTIONS:**

Housing and trim assemblies can be purchased or shipped separately. Additional options available:

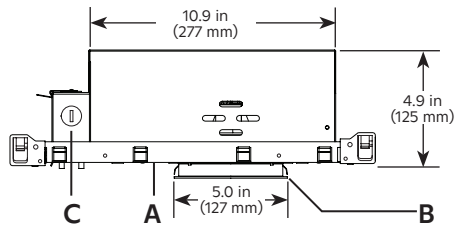
- Ceiling greater than 2 in (51 mm) thick
- Custom options
- Custom trim options
- Various CCT

For custom options, please contact Lutron Customer Service at 1.844.LUTRON1 (1.844.588.7661).

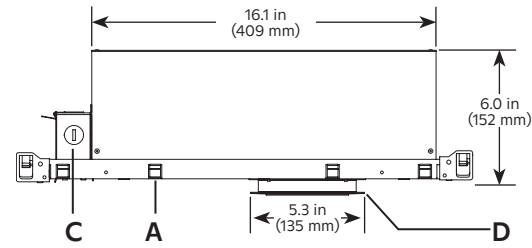
**FINIRÉ 3" LED ROUND ADJUSTABLE DOWNLIGHTS**

**PRODUCT DIMENSIONS**

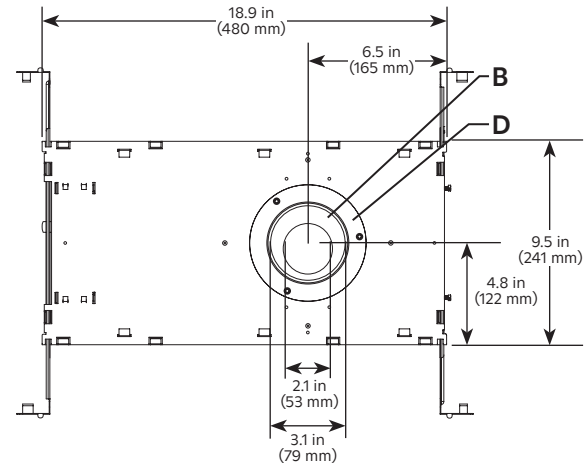
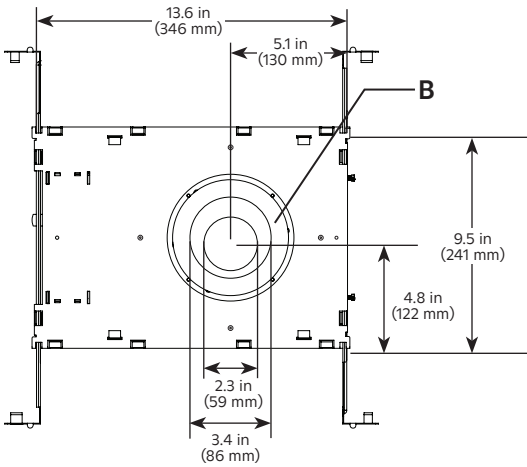
**Non-IC Flanged Housing**



**IC Flangeless Housing**



- A HOUSING
  - B TRIM
  - C JUNCTION BOX
  - D MUD-IN TRIM RETAINER<sup>1</sup>
- Lutron control not shown



<sup>1</sup> Mud-in trim retainer is for flangeless fixtures only.

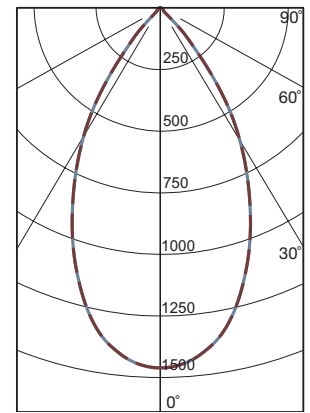
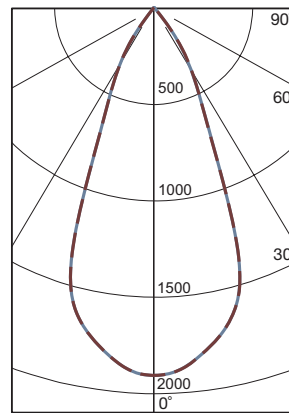
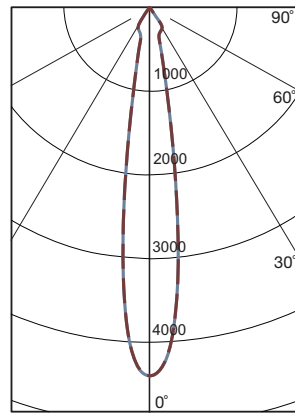
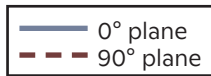
**FINIRÉ 3" LED ROUND ADJUSTABLE DOWNLIGHTS**

**PHOTOMETRIC DATA: ADJUSTABLE DOWNLIGHT**

**97 CRI / R9 = 95**

LED TYPE	Narrow Spot	Standard	High Output
BEAM ANGLE	15°	40°	55°
MODEL NUMBER	FDT3RNNS3015HOXXXX-RTDOOMWXXXX	FDT3RNXX2740HOXXXX-RTDOOMWXXXX	FDT3RNHO3555HOXXXX-RTDOOMWXXXX
DELIVERED LUMENS (lm)	638	964	1220
POWER CONSUMPTION (W)	14.92	16.33	15.66
EFFICACY (lm/W)	42.8	59	77.9
COLOR ACCURACY (CRI)	97.1	97.4	96.7
COLOR TEMPERATURE (CCT)	3000 K	2700 K	3500 K

**CANDELA PLOT (NADIR)**



Foot-candles	Beam Dia.
275	4 ft (1.22 m) / 1.08 ft (0.33 m)
122	6 ft (1.83 m) / 1.61 ft (0.49 m)
68.7	8 ft (2.44 m) / 2.15 ft (0.66 m)
44.0	10 ft (3.05 m) / 2.69 ft (0.82 m)
30.5	12 ft (3.66 m) / 3.23 ft (0.99 m)
22.4	14 ft (4.27 m) / 3.76 ft (1.15 m)
17.2	16 ft (4.88 m) / 4.30 ft (1.31 m)

Distance From Light

Foot-candles	Beam Dia.
118	4 ft (1.22 m) / 2.83 ft (0.863 m)
52.3	6 ft (1.83 m) / 4.25 ft (1.30 m)
29.4	8 ft (2.44 m) / 5.67 ft (1.73 m)
18.8	10 ft (3.05 m) / 7.08 ft (2.16 m)
13.1	12 ft (3.66 m) / 8.50 ft (2.59 m)
9.61	14 ft (4.27 m) / 9.92 ft (3.02 m)
7.36	16 ft (4.88 m) / 11.3 ft (3.44 m)

Distance From Light

Foot-candles	Beam Dia.
91.1	4 ft (1.22 m) / 3.26 ft (0.99 m)
40.5	6 ft (1.83 m) / 4.90 ft (1.49 m)
22.8	8 ft (2.44 m) / 6.53 ft (1.99 m)
14.6	10 ft (3.05 m) / 8.16 ft (2.49 m)
10.1	12 ft (3.66 m) / 9.79 ft (2.98 m)
7.43	14 ft (4.27 m) / 11.4 ft (3.47 m)
5.69	16 ft (4.88 m) / 13.1 ft (3.99 m)

Distance From Light

**TRIM / LENS OPTION EFFICIENCY**

No Lens	Solite™ Lens	Frosted Lens	Wall Wash Lens <sup>1</sup>	Pinhole Trim
100%	96%	87%	62%	75%

<sup>1</sup> Wall Wash option standard with custom frosted lens.

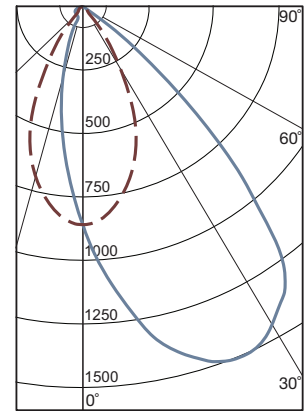
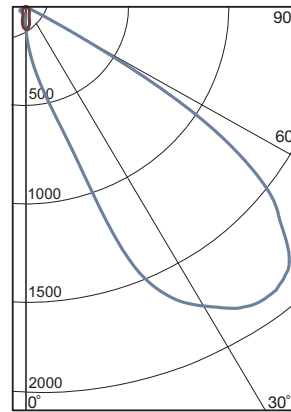
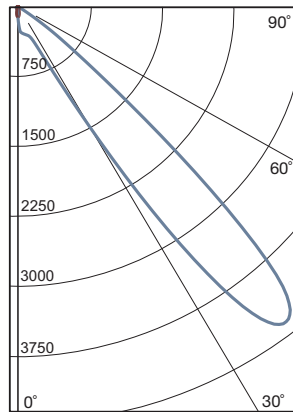
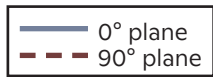
**FINIRÉ 3" LED ROUND ADJUSTABLE DOWNLIGHTS**

**PHOTOMETRIC DATA: ADJUSTABLE DOWNLIGHT <sup>1</sup>**

97 CRI / R9 = 95

LED TYPE	Narrow Spot	Standard	High Output
BEAM ANGLE	15°	40°	55°
MODEL NUMBER	FAT3RNNS3015H0XXXX-RTAOOMWXXXX <sup>1</sup>	FAT3RNXX2740H0XXXX-RTAOOMWXXXX <sup>1</sup>	FAT3RNHO3555H0XXXX-RTAOOMWXXXX <sup>1</sup>
DELIVERED LUMENS (lm)	584	879.8	1022
POWER CONSUMPTION (W)	15.82	16.32	17.33
EFFICACY (lm/W)	36.9	53.9	59
COLOR ACCURACY (CRI)	96.5	97.4	97
COLOR TEMPERATURE (CCT)	3000 K	2700 K	3500 K

**CANDELA PLOT (NADIR)**

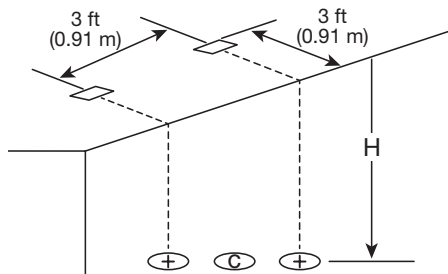


**MULTIPLE UNITS**

**FOOTCANDLES (fc) ON WALL (FIGURE A)**

H = DISTANCE FROM CEILING	Narrow Spot			Standard			High Output		
	+	C	+	+	C	+	+	C	+
1 ft (0.31 m)	1	1	1	1	1	1	1	1	1
2 ft (0.61 m)	5	3	5	22	9	21	2	2	2
3 ft (0.91 m)	49	17	48	67	48	66	15	10	14
4 ft (1.22 m)	86	30	83	57	63	56	30	30	29
5 ft (1.52 m)	47	21	46	38	45	39	30	34	30
6 ft (1.83 m)	14	11	15	25	29	25	23	27	24
8 ft (2.44 m)	4	4	4	10	11	10	13	15	13
10 ft (3.05 m)	2	2	2	4	4	4	8	8	8
12 ft (3.66 m)	1	1	1	2	2	2	5	5	5
14 ft (4.27 m)	1	1	1	1	1	1	4	4	4

**FIGURE A - MULTIPLE UNITS DIAGRAM**

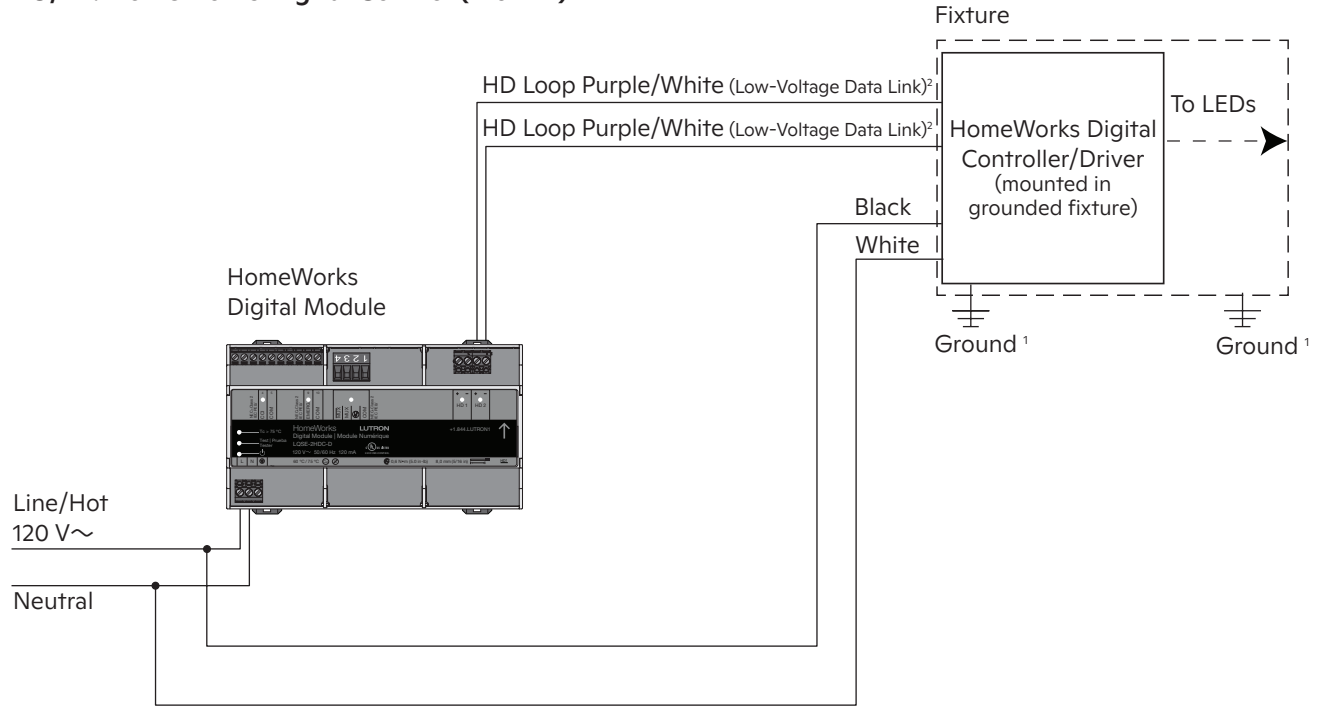


<sup>1</sup> All adjustable luminaires were tested at the maximum 40° tilt angle.

**FINIRÉ 3" LED ROUND ADJUSTABLE DOWNLIGHTS**

**WIRING DIAGRAMS**

**HO/H1: HomeWorks Digital Control (120 V~)**



- <sup>1</sup> Ensure that both ground wires are connected in the junction box.
- <sup>2</sup> HD loop wiring can be either class 1 or 2 rated.

For a list of compatible controls and control ratings, contact the LED Control Center of Excellence at 1.844.LUTRON1 (1.844.588.7661).

The Lutron logo, Lutron, HomeWorks, Finiré, Hi-lume, IVALO, and IVALO Lighting are trademarks or registered trademarks of Lutron Electronics Co., Inc. in the US and/or other countries.

All other product names, logos, and brands are property of their respective owners.

©2015-2024 Lutron Electronics Co., Inc.

