

Finiré 3" LED Round Fixed Downlights

PRODUCT DESCRIPTION

Ivalo recessed LED downlight delivering high-quality 95+ CRI LEDs, and Lutron 0.1% static white.

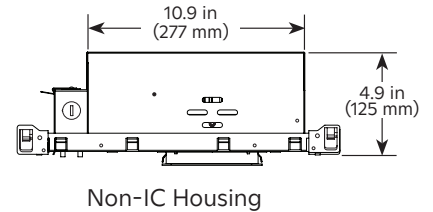
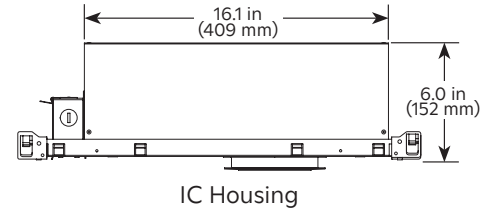
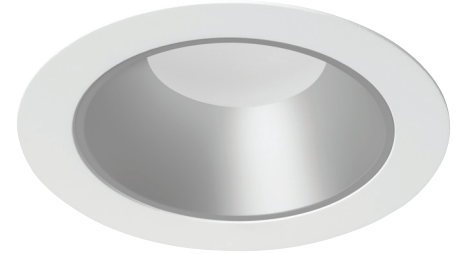
FEATURES

High-Performance 0.1% or 1% Dimming—Highest-quality dimming and 95+ CRI LED light performance fixture that comes standard with new HomeWorks 0.1% digital controllers. Guaranteed flicker-free dimming via Lutron controls. Backed by 24/7 customer-first service and support.

Intelligent and Digitally Addressable—HomeWorks digital technology allows you to individually address each fixture, letting you easily reconfigure lighting zones to accommodate changes in the space (like rearranged furniture) without rewiring.

Static White and Warm Dim Options—Choose traditional 2700K, 3000K or 3500K white LED colors or warm dimming if you have a preference for lighting that shifts to a warm amber color as it dims. This feature can be difficult to render naturally, but Finiré’s warm dimming offers an incandescent-like experience that dims smoothly from 2700K or 3000K down to 1800K.

Ultimate Flexibility—To reduce risk and maximize flexibility, choose the Finiré 3" adjustable fixture, which can be converted to a fixed or wall wash downlight.



OPTIONS

Flanged



Fixed



Fixed Pinhole

Flangeless

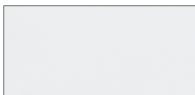


Fixed



Fixed Pinhole

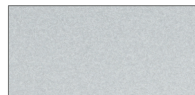
Finish



Matte White ¹



Matte Black ¹



Silver ¹



Bronze ¹



Silver / White ²



Clear Anodized / White ²



Clear Chrome / White ²



Black Chrome / White ²

¹ Matte White, Matte Black, Silver and Bronze are coordinated color finishes to match Finiré Prime and Ketra D3 downlights.

² White flange standard with flanged trims.

FINIRÉ 3" LED ROUND FIXED DOWNLIGHTS

SPECIFICATIONS

Optical Performance

Delivered Lumens	Up to 1100 lm (typical) for IC and 1750 lm (typical) for Non-IC fixtures
Size	15° narrow spot available. 30°, 40°, and 55° reflectors are field replaceable for standard and high-output fixtures
CRI (Ra)	Xicato® LEDs: 97 CRI, R9=95 (typical)
Lumen Maintenance	50,000 hours rated LED system life (LED and controllers)
Color Point Range	Fixture to fixture consistency, 1 × 2 step MacAdam Ellipse
Dimming Range	Included Lutron LED controllers deliver continuous, flicker-free dimming from 100% down to 1% or 0.1% of measured light output

Environmental

Ambient Temperature	32 °F – 104 °F (0 °C – 40 °C) ²
Decibel Rating	Quiet in a 25 dB room Certification
Certification	IC housings meet airtight construction requirements for 2.0 CFM or less air leakage and are rated for spray foam applications ¹
Location	UL Damp Location, UL Wet Location (shower) available with Trim Lens. Plenum rated option available ²
Indoor / Outdoor	Outdoor use available for residential enclosed/covered patio applications. Trim lens required
Warranty	5 year fixture, LED, and dimming warranty

Mechanical

Housing	IC and Non-IC options. IC fixtures must be used for installations containing insulating materials. Non-IC fixtures cannot be used in this type of application ¹
Housing Material	Housings finished with black powder coat and constructed of 20 gauge steel
Lens Material	Glass
Trim	Variety of trim options including flangeless millwork (wood/stone ceilings). ³
Adjustability	0° to 40° tilt in 5° increments and 362° rotation
Mounting Options	Supplied with standard 14 in to 24 in (356 mm to 610 mm) adjustable bar hangers. Optional 9.5 in to 15 in (241 mm to 381 mm) bar hangers available
Field Replacable Componets	Drivers (Controllers), Trim, Lens, and LED

Electrical

Voltage	120 V~ 60 Hz
Power consumption	17 W / 29 W

Dimensions

Maximum Ceiling Thickness	2.0 in (51 mm)
Mud-In Retainer Thickness¹	0.068 in (1.7 mm)
Ceiling Cutout	ø 4.6 in (ø 117 mm)
Fixture Weight	7.2 lb (3.3 kg) Non-IC, 8.9 lb (4.1 kg) IC
Fixture Dimensions	IC: 18.9 in x 9.5 in x 6.0 in (480 mm x 241 mm x 152 mm) Non-IC: 13.6 in x 9.5 in x 4.9 in (345 mm x 241 mm x 125 mm)
Junction Box	5.6 in x 3.0 in x 1.6 in (143 mm x 76 mm x 41 mm). See NEC ³ chart 314.16A for box fill/wiring capacity

¹ Rated for direct application of spray foam with less than R-21 insulative value or 3 in (76.2 mm) of closed cell spray foam. 95 °F (35 °C) maximum operating temperature.

² Plenum rated option is Chicago rated for use in air handling plenums.

³ For additional details please see the Finiré 3" Installation Instructions (P/N 377-2578) at www.lutron.com

FINIRÉ 3" LED ROUND FIXED DOWNLIGHTS

ORDERING GUIDE

Please download this PDF to use the interactive drop down features of the ordering guide.

Base Unit Configuration

Product Line	Power Consumption	CCT	Beam Angle
Control System	Mounting	Ceiling Type	

Trim

Trim		
Finish	Lens	Options

Order code: _____

Order code: _____

Product Line	Code	Control System	Code	Trim	Code
Finiré 3 in Flanged IC Round Fixed	FDT3RI	0.1% HomeWorks Digital 120 V~ ⁴	H0	Round Flanged Fixed	RTD00
Finiré 3 in Flanged Non-IC Round Fixed	FDT3RN	1% HomeWorks Digital 120 V~ ⁵	H1	Round Flangeless Fixed	RZD00
Finiré 3 in Flangeless IC Round Fixed	FDZ3RI	Mounting		Round Flanged Pinhole Fixed ^{9,10}	RTP00
Finiré 3 in Flangeless Non-IC Round Fixed	FDZ3RN	Standard Hanger Bars 14 in to 24 in (356 mm to 610 mm)	XX	Round Flangeless Pinhole Fixed ^{9,10}	RZP00
		Narrow Joint Hanger Bars 9.5 in to 15 in (241 mm to 381 mm)	NJ	Finish	
Power Consumption		Ceiling Type		Matte White	MW
Standard 17 W, 850 lm, 97 CRI ¹	XX	Standard 1/2 in to 5/8 in (13 mm to 16 mm)	XX	Matte Black	BL
Narrow Spot 17 W, 650 lm, 97 CRI (15° beam only) ¹	NS	Flangeless Thick Ceiling >5/8 in to <2 in (>16 mm to <51 mm) ⁶	TT	Silver ¹¹	SI
High Output 17 W, 1100 lm, 97 CRI ¹	HO	Flangeless Millwork (Wood/Stone) Ceiling ⁷	TW	Bronze ¹¹	RB
High Plus 29 W, 1750 lm, 97 CRI ²	HP	Plenum Rated ⁸	PL	Clear Anodized / White ¹²	CA
CCT				Clear Chrome / White ¹²	CC
2700 K	27			Silver / White ^{11,12}	SW
3000 K	30			Black Chrome / White ^{9,11}	BC
3500 K	35			Lens	
Beam Angle				None	XX
15° (small) (NS LED Type only) ³	15			Frosted ¹³	FG
30° (medium) ³	30			Solite™ Glass ¹³	SI
40° (flood) ³	40			Options	
55° (wide flood) ³	55			None	XX
				Thick Ceiling ¹⁴	TC

¹ All wattage, lumen, and CRI values are typical values, tested with Matte White trims. For exact values reference the photometric data on page 3 or contact Fixture Customer Service.

² Available in Non-IC fixture type only.

³ For field replacement details, contact Lutron customer service.

⁴ Compatible with XX, NS, and HO LED Types.

⁵ Compatible only with HP LED Type.

⁶ For ceiling thicknesses greater than 5/8 in (16 mm) but less than 2 in (51 mm). Exact ceiling thickness must be specified during order entry.

⁷ For wood/stone flangeless options, use flangeless housing and standard flangeless trim. For additional details please see the Finiré 3" Installation Instructions (P/N 377-2578) at www.lutron.com

⁸ Plenum rated option is Chicago rated for use in air handling plenums.

⁹ Pinhole trims come in Matte White, Matte Black, Silver, or Bronze with Black inside baffle.

¹⁰ Solite™ lens recommended for pinhole trim.

¹¹ Painted finish.

¹² Clear Chrome, Silver/White, and Clear Anodized trims come with a Matte White flange standard for flanged options.

¹³ All Frosted and Solite™ lens options are wet location rated.

¹⁴ For ceiling thickness greater than 5/8 in (16 mm) but less than 2 in (51 mm). For additional details please see the Finiré 3" Installation Instructions (P/N 377-2578) at www.lutron.com

For Title 24 compliant model numbers or for more information, please contact Lighting Technical Support at lightingsupport@lutron.com or 1.844.LUTRON1 (1.844.588.7661)

FINIRÉ 3" LED ROUND FIXED DOWNLIGHTS

COMPONENT ORDERING GUIDE

Please download this PDF to use the interactive drop down features of the ordering guide.

Rough-in Housing

LED Module & Driver Kit

Replacement Reflector

Order code: _____

Order code: _____

Order code: _____

Rough-in Housing	Code	LED Module & Driver Kit	Code	Replacement Reflector	Code
Fixed Round IC Housing	FDR3RI	Standard IC LED Module Driver Kit	F3I-LMXX	15° Reflector Narrow Spot	F3NS15-KIT
		High Output IC LED Module Driver Kit	F3I-LMHO	30° Reflector Standard	F3XX30-KIT
Fixed Round Non-IC Housing	FDR3RN	Standard Non-IC LED Module Driver Kit	F3N-LMXX	40° Reflector Standard	F3XX40-KIT
		High Output Non-IC LED Module Driver Kit	F3N-LMHO	55° Reflector Standard	F3XX55-KIT
		High Plus Non-IC LED Module Driver Kit ¹	F3N-LMHP	30° Reflector High Output	F3HO30-KIT
				40° Reflector High Output	F3HO40-KIT
				55° Reflector High Output	F3HO55-KIT
			30° Reflector High Output Plus	F3HP30-KIT	
			40° Reflector High Output Plus	F3HP40-KIT	
			55° Reflector High Output Plus	F3HP55-KIT	

¹ Available in Non-IC Housing type only

OPTIONS:

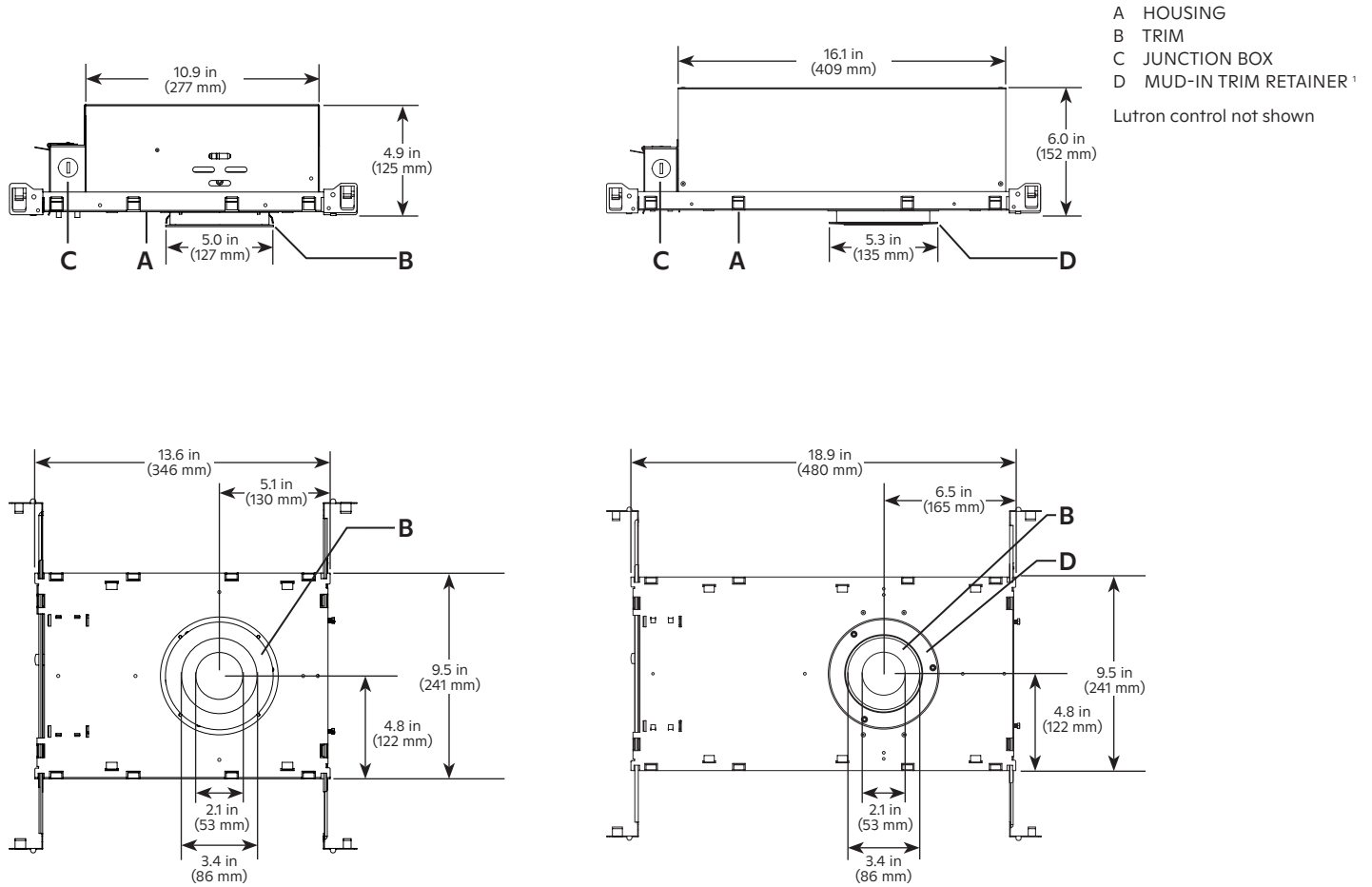
Housing and trim assemblies can be purchased or shipped separately. Additional options available:

- Ceiling greater than 2 in (51 mm) thick
- Custom options
- Custom trim options
- Various CCT

For custom options, please contact Lutron Customer Service at 1.844.LUTRON1 (1.844.588.7661).

FINIRÉ 3" LED ROUND FIXED DOWNLIGHTS

PRODUCT DIMENSIONS



¹ Mud-in trim retainer is for flangeless fixtures only.

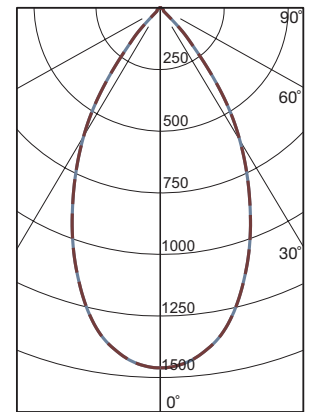
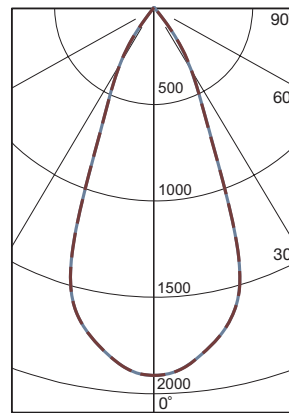
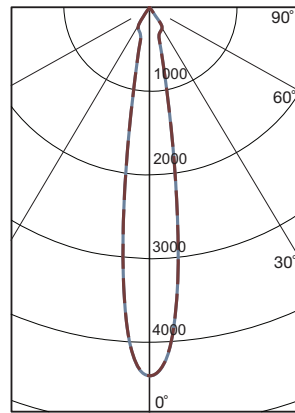
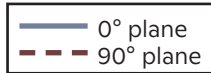
FINIRÉ 3" LED ROUND FIXED DOWNLIGHTS

PHOTOMETRIC DATA: FIXED DOWNLIGHT

97 CRI / R9 = 95

LED TYPE	Narrow Spot	Standard	High Output
BEAM ANGLE	15°	40°	55°
MODEL NUMBER	FDT3RNNS3015HOXXXX-RTDOOMWXXXX	FDT3RNXX2740HOXXXX-RTDOOMWXXXX	FDT3RNHO3555HOXXXX-RTDOOMWXXXX
DELIVERED LUMENS (lm)	638	964	1220
POWER CONSUMPTION (W)	14.92	16.33	15.66
EFFICACY (lm/W)	42.8	57.5	77.9
COLOR ACCURACY (CRI)	97.1	97.4	96.7
COLOR TEMPERATURE (CCT)	3000 K	2700 K	3500 K

CANDELA PLOT (NADIR)



Foot-candles	Distance From Light	Beam Dia.
275	4 ft (1.22 m)	1.08 ft (0.33 m)
122	6 ft (1.83 m)	1.61 ft (0.49 m)
68.7	8 ft (2.44 m)	2.15 ft (0.66 m)
44.0	10 ft (3.05 m)	2.69 ft (0.82 m)
30.5	12 ft (3.66 m)	3.23 ft (0.99 m)
22.4	14 ft (4.27 m)	3.76 ft (1.15 m)
17.2	16 ft (4.88 m)	4.30 ft (1.31 m)

Foot-candles	Distance From Light	Beam Dia.
118	4 ft (1.22 m)	2.83 ft (0.86 m)
52.3	6 ft (1.83 m)	4.25 ft (1.30 m)
29.4	8 ft (2.44 m)	5.67 ft (1.73 m)
18.8	10 ft (3.05 m)	7.08 ft (2.16 m)
13.1	12 ft (3.66 m)	8.50 ft (2.60 m)
9.61	14 ft (4.27 m)	9.92 ft (3.02 m)
7.36	16 ft (4.88 m)	11.3 ft (3.44 m)

Foot-candles	Distance From Light	Beam Dia.
91.1	4 ft (1.22 m)	3.26 ft (0.99 m)
40.5	6 ft (1.83 m)	4.90 ft (1.49 m)
22.8	8 ft (2.44 m)	6.53 ft (1.99 m)
14.6	10 ft (3.05 m)	8.16 ft (2.49 m)
10.1	12 ft (3.66 m)	9.79 ft (2.98 m)
7.43	14 ft (4.27 m)	11.4 ft (3.47 m)
5.69	16 ft (4.88 m)	13.1 ft (3.99 m)

TRIM / LENS OPTION EFFICIENCY

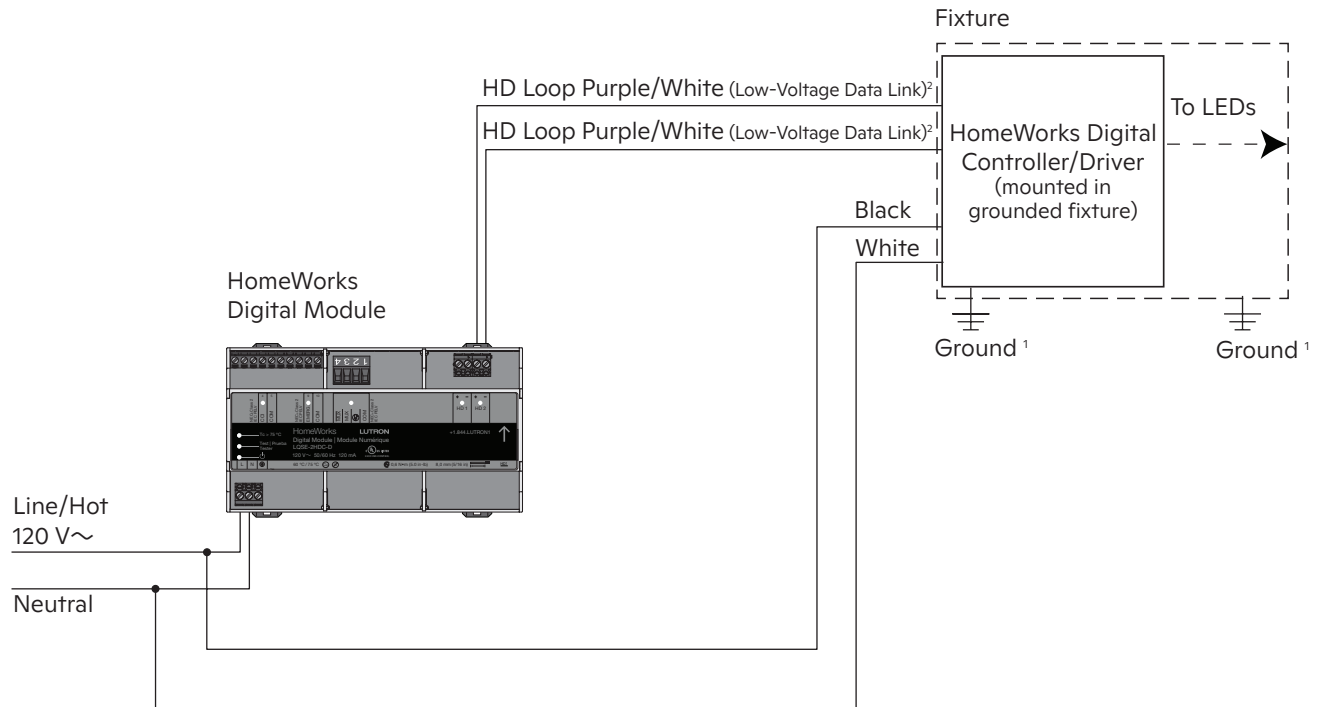
No Lens	Solite™ Lens	Frosted Lens	Wall Wash Lens ¹	Pinhole Trim
100%	96%	87%	62%	75%

¹ Wall Wash standard with frosted lens.

FINIRÉ 3" LED ROUND FIXED DOWNLIGHTS

WIRING DIAGRAMS

HO/H1: HomeWorks Digital Control (120 V~)



- ¹ Ensure that both ground wires are connected in the junction box.
- ² HD loop wiring can be either class 1 or 2 rated.

For a list of compatible controls and control ratings, contact the LED Control Center of Excellence at 1.844.LUTRON1 (1.844.588.7661).

The Lutron logo, Lutron, HomeWorks, Finiré, Hi-lume, IVALO, and IVALO Lighting are trademarks or registered trademarks of Lutron Electronics Co., Inc. in the US and/or other countries.

All other product names, logos, and brands are property of their respective owners.

©2015-2024 Lutron Electronics Co., Inc.

