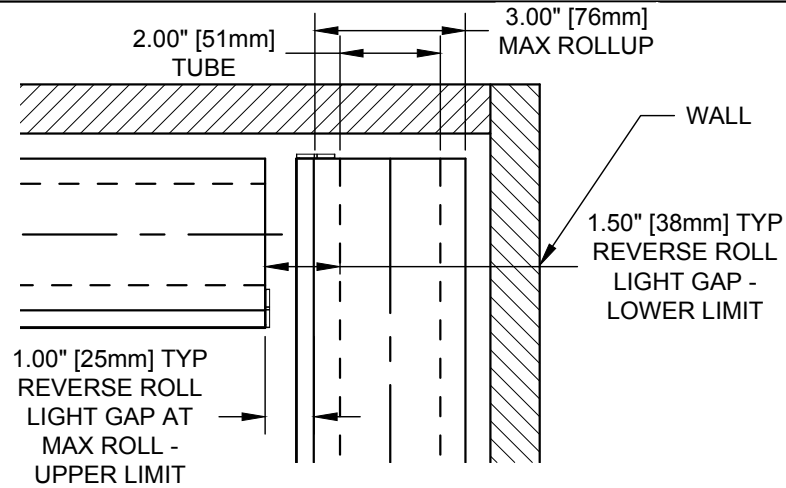
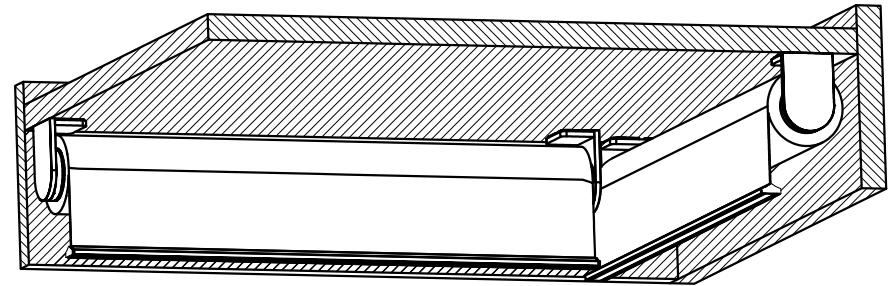


PALLADIOM SHADE

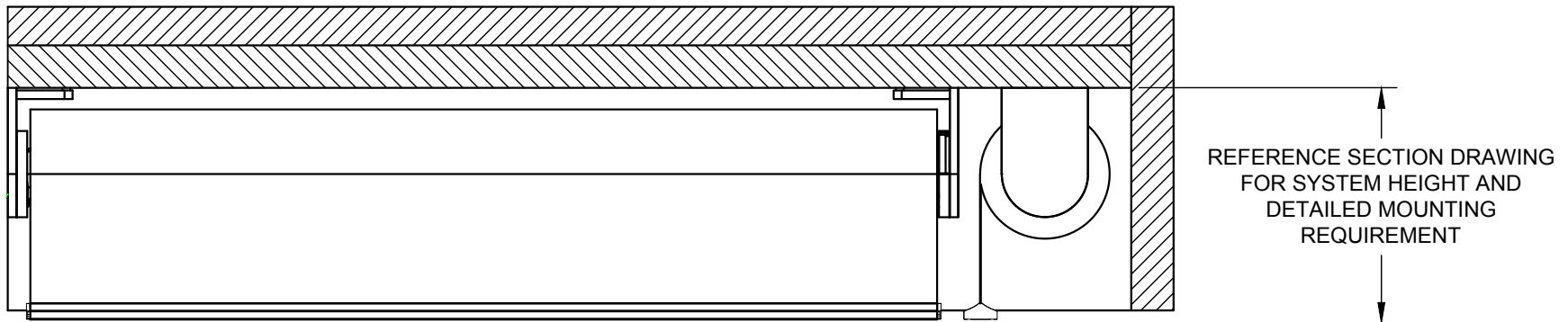


BUTT AND PASS TYPICAL DETAILS



SCALE: 1/8

CEILING BRACKET SHOWN



SHADE INSTALLED AS PROVIDED BY FACTORY WILL HAVE ALL NECESSARY CLEARANCES FOR PROPER OPERATION. IT IS THE RESPONSIBILITY OF THE MASTER TECHNICIAN TO ENSURE PROPER CLEARANCES ARE MAINTAINED AFTER INSTALLATION. **MINIMUM RECOMMENDED DEDUCTIONS BASED ON 90° CORNER.**

PALLADIOM SHADE BUTT AND PASS INSTALLATION

085632

SCALE: 1/4

PAGE: 1

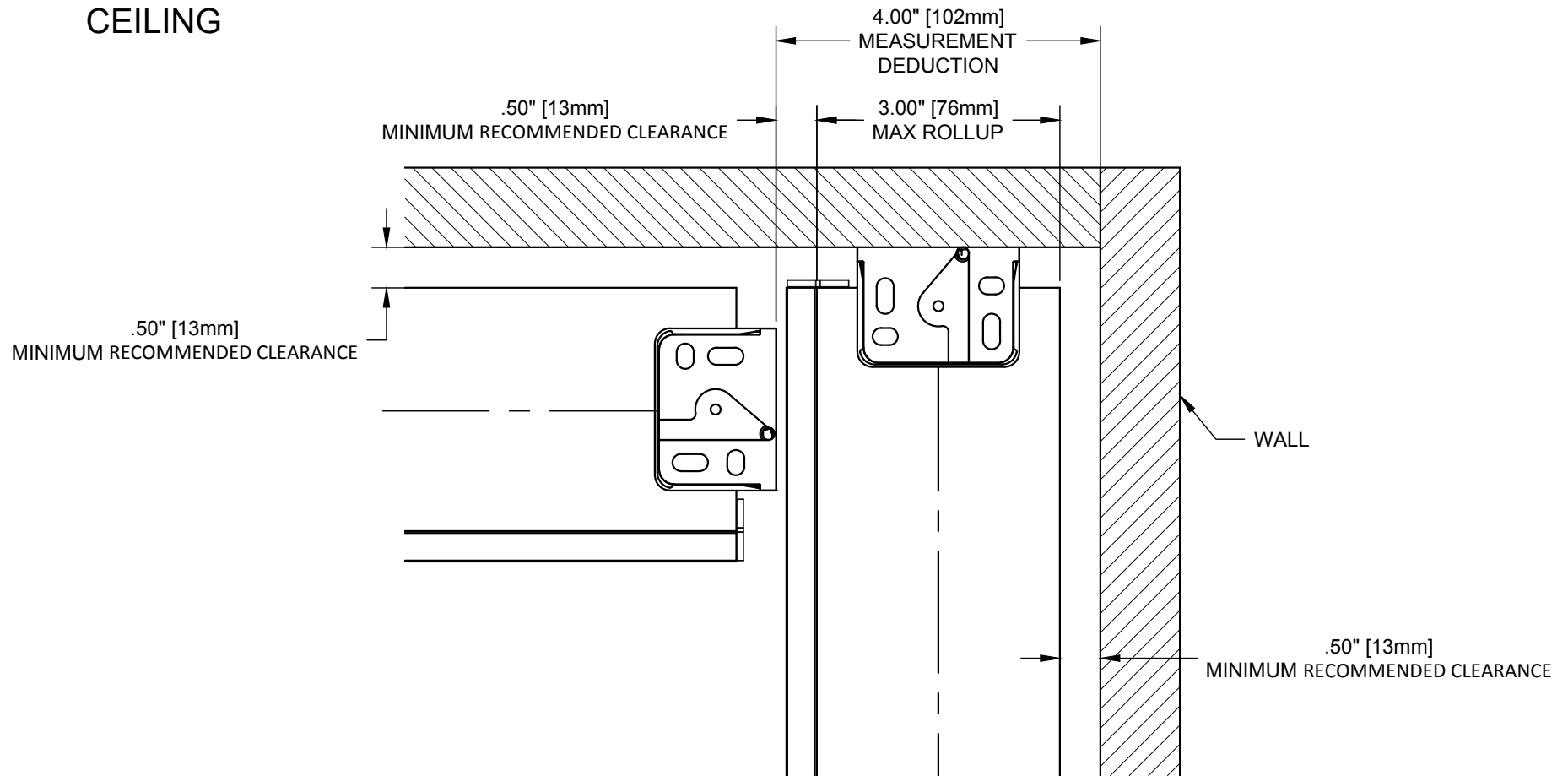
REVISION: B



Lutron Electronics Co., Inc.
7200 Suter Road | Coopersburg, PA 18036 | USA
1(800) 446-1503 | Fax: (610) 282-7439
<http://www.lutron.com>

AUXILIARY VIEWS

CEILING



SHADE INSTALLED AS PROVIDED BY FACTORY WILL HAVE ALL NECESSARY CLEARANCES FOR PROPER OPERATION. IT IS THE RESPONSIBILITY OF THE MASTER TECHNICIAN TO ENSURE PROPER CLEARANCES ARE MAINTAINED AFTER INSTALLATION. **MINIMUM RECOMMENDED DEDUCTIONS BASED ON 90° CORNER.**

PALLADIOM SHADE BUTT AND PASS INSTALLATION

085632

SCALE: 1/2

PAGE: 2

REVISION: B



Lutron Electronics Co., Inc.
7200 Suter Road | Coopersburg, PA 18036 | USA
1(800) 446-1503 | Fax: (610) 282-7439
<http://www.lutron.com>

TOP VIEWS