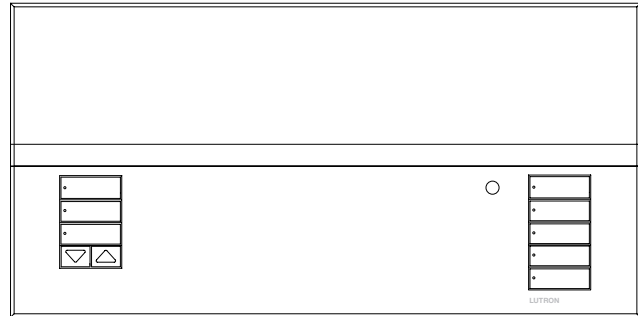


GRAFIK Eye QS

The GRAFIK Eye QS controls up to six zones of light and will operate the following sources with a continuous Square Law dimming curve or on a full conduction non-dim basis:

- Incandescent
- LED^{1, 2}
- Tungsten Halogen
- Electronic Low-Voltage (ELV)³
- Magnetic Low-Voltage (MLV) Transformer
- Metal Halide/High Pressure Sodium Switched
- Neon/Cold Cathode
- Lutron Tu-Wire Electronic Fluorescent Dimming Ballasts
- Approved LED and CFL Lamps/Fixtures

The GRAFIK Eye QS can be configured for wired, QS link (HomeWorks only), or wireless, RF link (HomeWorks and RadioRA 2), communication.



GRAFIK Eye QS

Models

Model Number	Zones	Voltage	Additional Features
QSGRJ-3P-XX	3	120 V~, 220-240 V~	-
QSGRJ-4P-XX	4	120 V~, 220-240 V~	-
QSGRJ-6P-XX	6	120 V~, 220-240 V~	-
QSGRJ-3P-1XX	3	120 V~, 220-240 V~	1 extra button column
QSGRJ-3P-TXX	3	120 V~, 220-240 V~	translucent cover
QSGRJ-3P-1TXX	3	120 V~, 220-240 V~	1 extra button column, translucent cover
QSGRJ-4P-1XX	4	120 V~, 220-240 V~	1 extra button column
QSGRJ-4P-TXX	4	120 V~, 220-240 V~	translucent cover
QSGRJ-4P-1TXX	4	120 V~, 220-240 V~	1 extra button column, translucent cover
QSGRJ-6P-1XX	6	120 V~, 220-240 V~	1 extra button column
QSGRJ-6P-TXX	6	120 V~, 220-240 V~	translucent cover
QSGRJ-6P-1TXX	6	120 V~, 220-240 V~	1 extra button column, translucent cover
QSGFP-	Faceplate kit		

NOTES

- "XX" in the model number represents color/finish code. See pages 9 and 10 for Colors and Finishes.
- See page 6 for model number breakdown.

¹ Dimming curve will be dependent on specific LED models.

² For more information on controlling LEDs, please see Application Note #487 on www.lutron.com

³ ELV can be controlled with a smooth, continuous Square Law dimming curve or on a full conduction non-dim basis through a separate Lutron power module, ELV, or Phase Adaptive power module.

GRAFIK Eye QS

Specifications

Model Numbers	See previous page
Power	120 V~ 50/60 Hz 220–240 V~ (non CE) 50/60 Hz
Typical Power Consumption	7 W, 0 Power Draw Units (PDUs). The GRAFIK Eye QS is not powered from the link, Pin 2 should not be connected. Typical Power Consumption test conditions: all loads off, one button LED on.
Regulatory Approvals	cULus, FCC, IC, SCT, NOM, CEC (Title 24)
Environment	Ambient operating temperature: 32 °F to 104 °F (0 °C to 40 °C) Ambient operating humidity: 0-90% humidity, non-condensing. Indoor use only.
Communications	Wired (HomeWorks only): Low-voltage type IEC PELV/NEC® Class 2 wiring connects GRAFIK Eye QS to processor. Each HomeWorks processor has two configurable links. GRAFIK Eye QS communicates with the processor via the QS link. RF (RadioRA 2 and HomeWorks): Lutron wireless Clear Connect Technology
ESD Protection	Tested to withstand electrostatic discharge without damage or memory loss, in accordance with IEC 801-2.
Surge Protection	Tested to withstand surge voltages without damage or loss of operation, in accordance with IEEE C62.41-1991 Recommended Practice on Surge Voltages in Low-Voltage AC Power Circuits.
Power Failure	Provides 10-year power failure memory: Automatically restores lighting to levels prior to power interruption.
Mounting	Installs in a standard 4-gang U.S. wallbox, 3½ in (89 mm) deep is strongly recommended. Always allow at least 4½ in (114 mm) clearance above and below the control unit to provide adequate space for cooling. Wallplate snaps on with no visible means of attachment.
Line Voltage Wiring	Each line voltage terminal can accept one 12 AWG (4.0 mm ²) wire.
IEC PELV/NEC® Class 2 QS System Low-Voltage Wiring (HomeWorks® QS only)	System communication uses low-voltage wiring. Wiring can be daisy-chained or T-tapped. Wiring must be run separately from line/mains voltage. IEC PELV/NEC® Class 2 wiring link requires: Two 18 AWG (0.75 mm ²) conductors for control power. One twisted, shielded pair of 22 AWG (0.34 mm ²) for data link. Available from Lutron, P/N GRX-CBL-346S; check compatibility in your area. Total length of control link must not exceed 2000 ft (610 m).
Warranty	www.lutron.com/TechnicalDocumentLibrary/Warranty.pdf www.lutron.com/TechnicalDocumentLibrary/Intl_Warranty.pdf

GRAFIK Eye QS

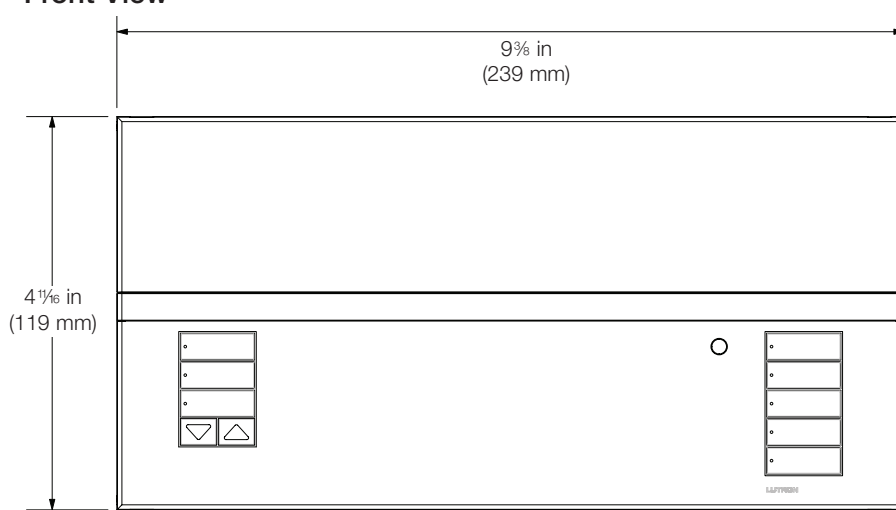
Design Features

- Contains RTISS Equipped technology to compensate in real time for incoming line voltage variations: No visible flicker with +/-2% change in RMS voltage/cycle and +/-2% change in frequency/second.
- Buttons are programmable to select scene or room preset levels or positions.
- Wallplate snaps on with no visible means of attachment.
- Can be configured for wired, QS link (HomeWorks only), or wireless, RF link (HomeWorks and RadioRA 2), communication.

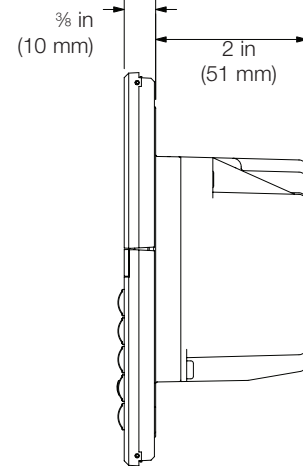
Dimensions

Dimensions shown as: in (mm)

Front View

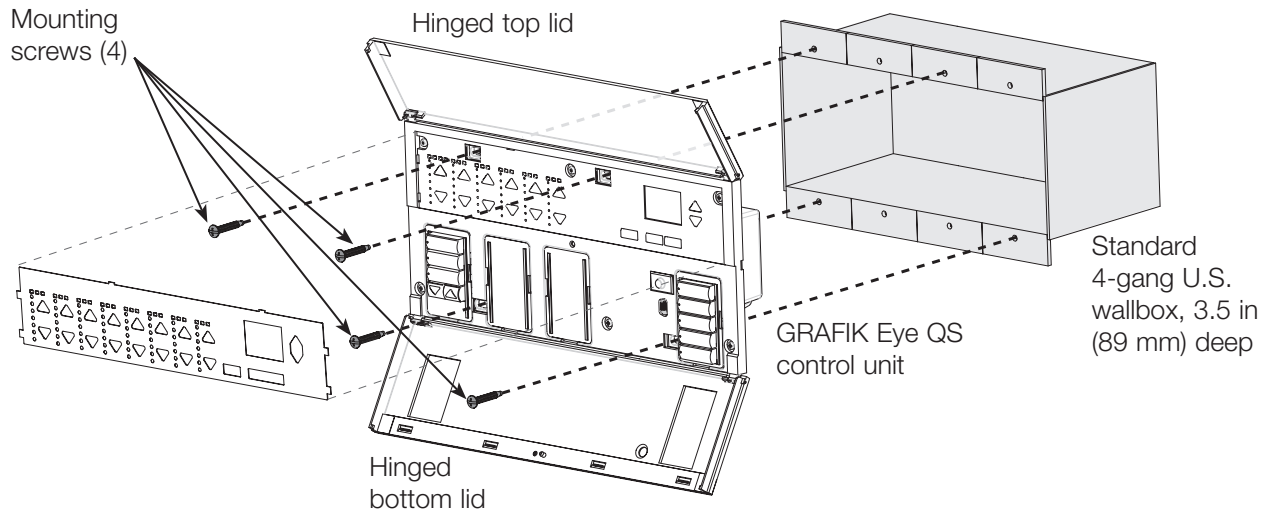


Side View



Fits into a 4-gang U.S. backbox, 3.5 in (89 mm) deep; Lutron P/N 241400

Mounting



GRAFIK Eye QS

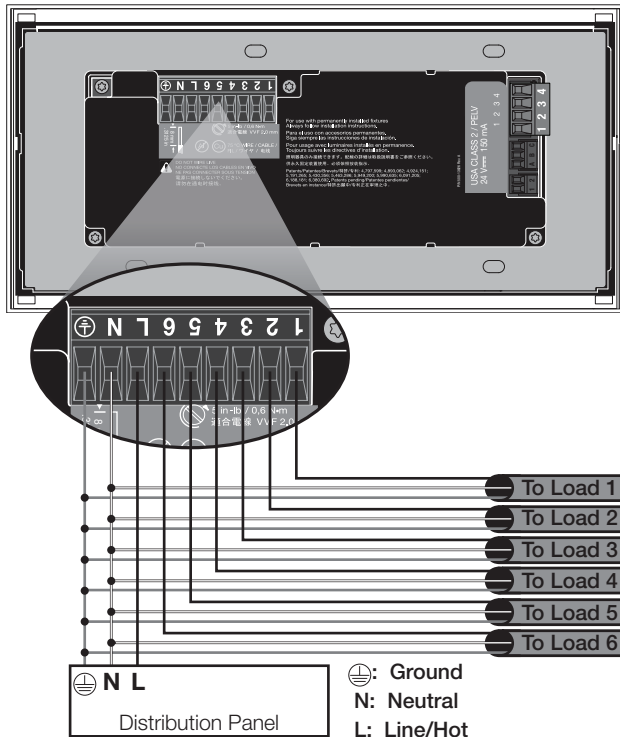
Load Capacity

	120 V~ 50/60 Hz	220–240 V~ 50/60 Hz
Unit Capacity (watts)	2000 W	3000 W
Magnetic Low-Voltage	2000 VA/1600 W	3000 VA/2400 W
Zone Capacity (watts)	25–800 W	40–1200 W
Magnetic Low-Voltage	25–800 VA/25–600 W	40–1200 VA/40–960 W
LED	See Application Note #487	

Load Type Notes

- When dimming Electronic Low-Voltage (ELV) lighting, an ELV interface (such as PHPM-PA-DV-WH) must be used with the control unit. Before installing an ELV light source, verify with the manufacturer that their transformer can be dimmed.
- When controlling 0–10 V loads, a Ten Volt Interface (GRX-TVI) must be used with the control unit.
- Not all zones must be connected; however, **connected zones must have a minimum load as specified above.**
- Maximum total lighting load for a Magnetic Low-Voltage (MLV) varies by input voltage (**specified above**):
 - 120 V~: 800 VA / 600 W
 - 220–240 V~: 1200 VA/960 W
- No zone may be loaded with more than the capacity specified above. For higher wattage applications, or for 277 V~ applications, use Lutron power module PHPM-PA, PHPM-WBX, PHPM-PA-DV, PHPM-SW, or PHPM-WBX-DV.

Power and Load Wiring

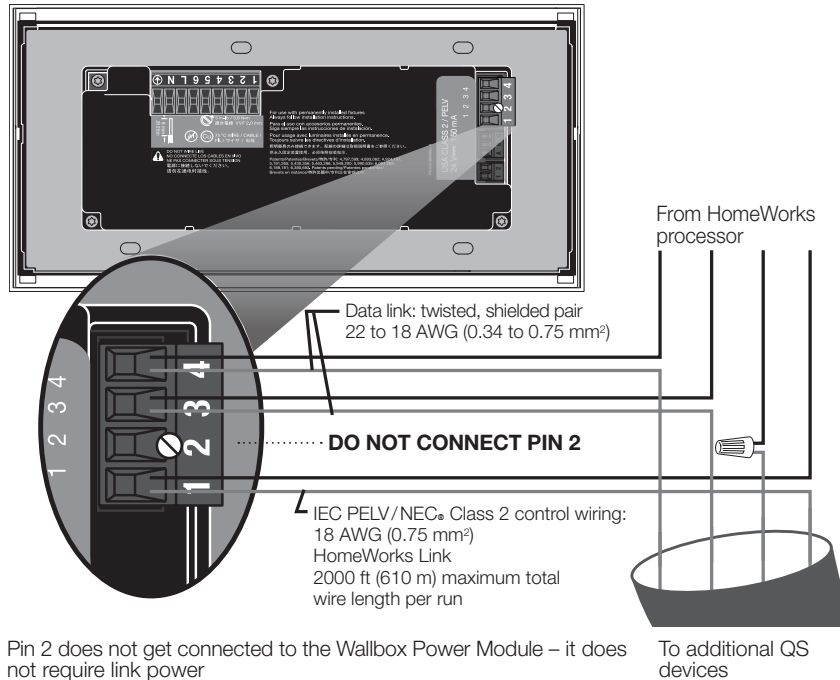


GRAFIK Eye QS

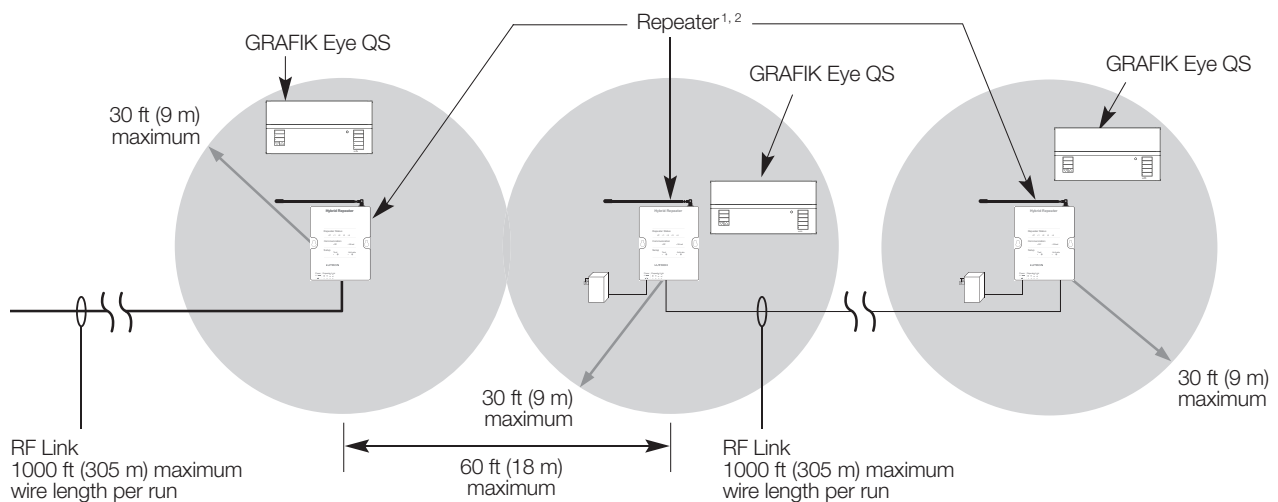
Communications

HomeWorks supports selection of wired or RF communications. A GRAFIK Eye QS main unit that communicates back to a HomeWorks processor through the RF link should not have any QS wired link connections. Only RF communication is available in RadioRA 2.

QS Link Wiring (HomeWorks only)



RF Link (RadioRA 2 and HomeWorks)



¹ In HomeWorks systems, use Hybrid Repeaters for range extension. In RadioRA 2, the repeater shown may be either a main repeater (1 required) or auxiliary repeater (up to 4 permitted).

² For reliable RF performance, the GRAFIK Eye QS main unit should be located at least 6 ft (2 m) away from the main or auxiliary repeater.

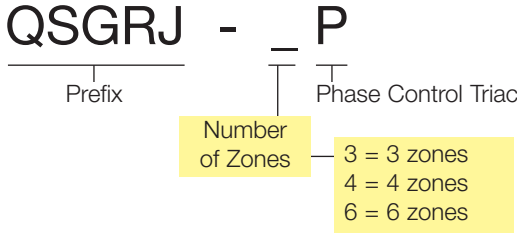
GRAFIK Eye QS

Wireless Control Unit: Custom Color Options and Model Numbers

You must order a Base Unit and a Faceplate Kit

See Standard Color Combinations page for faceplate, stripe, and button colors

Base Unit



Example:

QSGRJ-6P

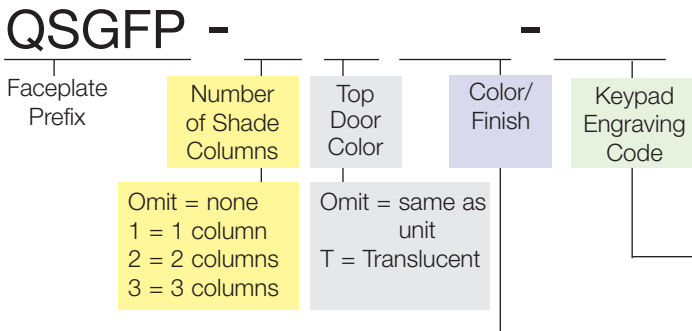
6-zone base unit
and

QSGFP-2IV-EGN

Ivory faceplate kit with two shade columns and general engraving

Faceplate Kit

(includes coordinating stripe and buttons)



Faceplate Custom Color/Finish Codes				Keypad Engraving Codes	
Architectural Matte Finishes		Architectural Metal Finishes		Satin Color Matte Finishes	
Standard		Bright Brass	BB	Snow	SW
(ship in 48 hours)		Bright Chrome	BC	Midnight	MN
White	WH	Bright Nickel	BN	Taupe	TP
Ivory	IV	Satin Brass	SB	Biscuit	BI
Beige	BE	Satin Chrome	SC	Eggshell	ES
Gray	GR	Satin Nickel	SN	Palladium	PD
Brown	BR	Antique Brass	QB	Hot	HT
Black	BL	Antique Bronze	QZ	Merlot	MR
Almond	AL			Plum	PL
Light Almond	LA	Anodized		Sienna	SI
		Aluminum Finishes		Terracotta	TC
		Clear	CLA	Bluestone	BG
		Black	BLA	Greenbriar	GB
		Brass	BRA	Goldstone	GS
				Mocha Stone	MS
				Stone	ST
				Desert Stone	DS
				Limestone	LS

Omit = Unengraved Ships with engraving certificate that customer can redeem at no charge EGN = General Engraving	
1	Open
2	Preset
3	Close
4	
Off	Shade column

Lighting keypad

Shade column

NST = Non-Standard Text Engraving Please visit the GRAFIK Eye QS website at www.lutron.com/grafikeyeqs for custom engraving forms. Submit completed form with order, and unit will ship engraved as specified by customer.

For the latest color offerings please see our website:
<http://www.lutron.com/satincolors>

GRAFIK Eye QS

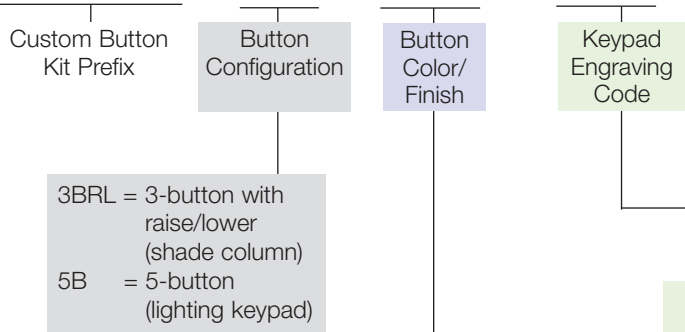
Wireless Control Unit: Custom Options and Model Numbers

See previous pages for Standard and Other Custom Model Numbers

See Standard Color Combinations page for faceplate, stripe, and button colors

Custom Button Kit

QSGB - 5B - WH -



3BRL = 3-button with raise/lower (shade column)
 5B = 5-button (lighting keypad)

Button Kit Custom Color/Finish Codes

Architectural Matte Finishes		Satin Color Matte Finishes	
White	WH	Snow	SW
Ivory	IV	Biscuit	BI
Beige	BE	Eggshell	ES
Gray	GR	Taupe	TP
Brown	BR		
Black	BL		
Almond	AL		
Light Almond	LA		

Keypad Engraving Codes

Omit = Unengraved
 Ships with engraving certificate that customer can redeem at no charge

EGN = General Engraving

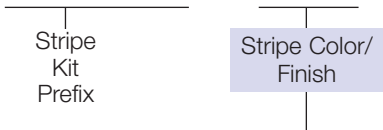
• 1	• Open
• 2	• Preset
• 3	• Close
• 4	
• Off	Shade column

Lighting keypad

NST = Non-Standard Text Engraving
 Please visit the GRAFIK Eye QS website at www.lutron.com/grafikeyeqs for custom engraving forms. Submit completed form with order, and unit will ship engraved as specified by customer.

Custom Stripe Kit

QSGS - WH

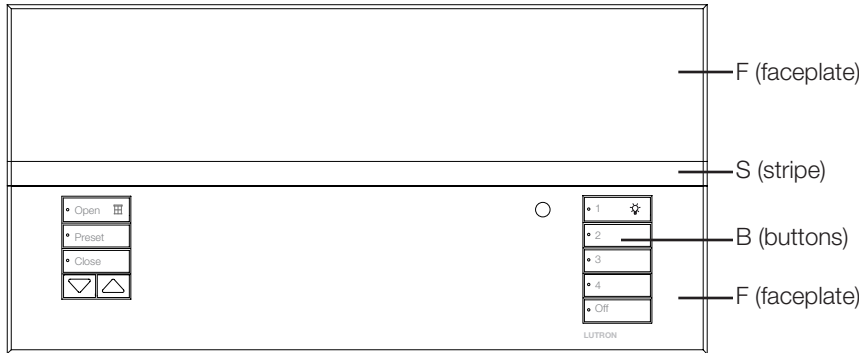


Stripe Custom Color/Finish Codes
 Same as Faceplate colors on previous page

GRAFIK Eye QS

Wireless Control Unit: Standard Color Combinations

See previous pages for Standard and Custom Model Numbers



Faceplate is comprised of a top and bottom. The bottom will always be the color indicated under “faceplate.” The top may be the same color or translucent. Use the chart for faceplates that have the same color top and bottom. If a translucent lid is chosen, the stripe will automatically be the same color as the bottom lid.

Example:

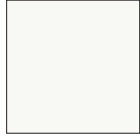
If you order QSGRJ-4P-1WH, your GRAFIK Eye QS with 4 lighting zones and 1 shade zone will come with a white faceplate (both top and bottom), gray stripe, and white buttons.

Suffix	Faceplate (F)	Stripe (S)	Button (B)	Suffix	Faceplate (F)	Stripe (S)	Button (B)
Architectural Matte				Satin Matte			
WH	White	Gray	White	SW	Snow	Gray	Snow
IV	Ivory	Beige	Ivory	MN	Midnight	Gray	Black
BE	Beige	Ivory	Beige	TP	Taupe	Gray	Taupe
GR	Gray	Black	Gray	BI	Biscuit	Eggshell	Biscuit
BR	Brown	Black	Brown	ES	Eggshell	Beige	Eggshell
BL	Black	Gray	Black	PD	Palladium	Gray	Gray
AL	Almond	Light Almond	Almond	HT	Hot	Taupe	Taupe
LA	Light Almond	Almond	Light Almond	MR	Merlot	Taupe	Taupe
Architectural Metal				PL	Plum	Taupe	Taupe
BB	Bright Brass	Black	Black	SI	Sienna	Brown	Brown
BC	Bright Chrome	Black	Black	TC	Terracotta	Taupe	Taupe
BN	Bright Nickel	Black	Black	BG	Bluestone	Gray	Gray
SB	Satin Brass	Black	Black	GB	Greenbriar	Gray	Gray
SC	Satin Chrome	Black	Black	GS	Goldstone	Ivory	Ivory
SN	Satin Nickel	Black	Black	MS	Mocha Stone	Taupe	Taupe
QB	Antique Brass	Black	Black	ST	Stone	Gray	Gray
QZ	Antique Bronze	Black	Black	DS	Desert Stone	Taupe	Taupe
Anodized				LS	Limestone	Gray	Gray
CLA	Clear	Black	Black	For the latest color offerings please see our website: http://www.lutron.com/satincolors			
BLA	Black	Black	Black				
BRA	Brass	Black	Black				

GRAFIK Eye QS

Colors and Finishes

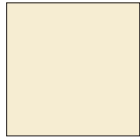
Architectural Matte Finishes (standard)



White
WH



Ivory
IV



Almond
AL



Light
Almond
LA



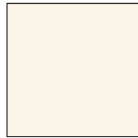
Gray
GR



Brown
BR



Black
BL



Beige
BE

Architectural Metal Finishes (Faceplate kit only)



Satin Brass
SB



Bright Brass
BB



Bright Chrome
BC



Clear Anodized
Aluminum
CLA



Black Anodized
Aluminum
BLA



Brass Anodized
Aluminum
BRA



Antique Brass
QB



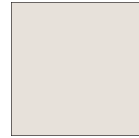
Antique Bronze
QZ



Satin Chrome
SC



Satin Nickel
SN



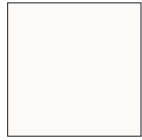
Bright Nickel
BN

- Due to printing limitations, colors and finishes shown cannot be guaranteed to perfectly match actual product colors.
- Color chip keychains are available for more precise color matching:
Architectural Matte Finishes: AM-CK-1
Architectural Metal Finishes: AMTL-CK-1

GRAFIK Eye QS

Colors and Finishes (continued)

Satin Finishes (Faceplate kit only)



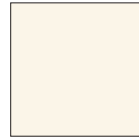
Snow
SW



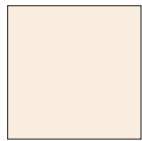
Midnight
MN



Taupe
TP



Biscuit
BI



Eggshell
ES



Palladium
PD



Hot
HT



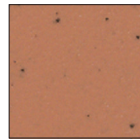
Merlot
MR



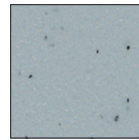
Plum
PL



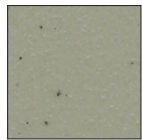
Sienna
SI



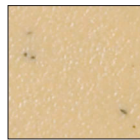
Terracotta
TC



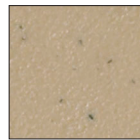
Bluestone
BG



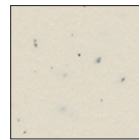
Greenbriar
GB



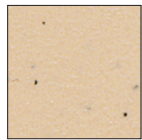
Goldstone
GS



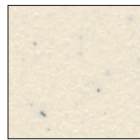
Mocha Stone
MS



Stone
ST



Desert Stone
DS



Limestone
LS

For the latest color offerings please see our website:
<http://www.lutron.com/satincolors>

- Due to printing limitations, colors and finishes shown cannot be guaranteed to perfectly match actual product colors.
- Color chip keychains are available for more precise color matching:

Satin Finishes: SC-CK-1

Lutron, Lutron, GRAFIK Eye, Tu-Wire, HomeWorks, RadioRA, Clear Connect, Satin Color, and RTISS Equipped are trademarks or registered trademarks of Lutron Electronics Co., Inc. in the US and/or other countries.
NEC is a registered trademark of National Fire Protection Association, Quincy, Massachusetts.
UL is a trademark of UL LLC.