

MACL-153M
120 V~ 60 Hz

150 W CFL/LED
600 W Incand./Hal.

If using CFL or LED bulbs, they must be Lutron® compatible!

www.lutron.com/macl

For the Compatible Bulb List...

Helpful Videos...

Advanced Programming & Operation...

Additional Wiring Scenarios...

or

If you have three or more switches controlling a light...

please visit:

www.lutron.com/macl

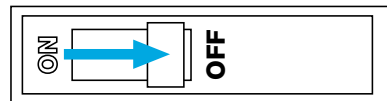
IMPORTANT

- CAUTION: Use only with permanently installed fixtures with dimmable screw-in compact fluorescent, dimmable screw-in LED, halogen, or incandescent lamps. To avoid overheating and possible damage to other equipment, do not use to control receptacles, motor-driven appliances, or low-voltage transformer-supplied appliances.
- Install in accordance with all national and local electrical codes.
- When no "grounding means" exists in wallbox, the 2011 National Electrical Code® (NEC®) allows a control to be installed as a replacement if 1) a nonmetallic, noncombustible faceplate is used with non-metallic attachment screws or 2) the circuit is protected by a ground fault circuit interrupter (GFCI). When installing a control according to these methods, cap or remove green wire before screwing control into wallbox and use an appropriate wallplate such as Claro® or Satin Colors® series wallplates by Lutron.
- 3-way wiring must use only one Maestro® C•L® Dimmer and a Maestro® Companion Dimmer (MA-R, MSC-AD) or an existing switch. 4-way wiring must use only one Maestro® C•L® Dimmer and up to 9 Maestro® Companion Dimmers (MA-R, MSC-AD).
- For indoor use only between 32 °F and 104 °F (0 °C and 40 °C).
- Maestro® C•L® Dimmers may feel warm to the touch during normal operation.
- Maximum wire length between the Master Dimmer and the last Companion Dimmer (MA-R, MSC-AD) is 150 ft (46 m).
- Clean dimmers with a soft damp cloth only. Do not use any chemical cleaners.

Replacing a Maestro® Dimmer with a Maestro® C•L® Dimmer

For lights switched from one location: For lights switched from two locations, see instructions on reverse.

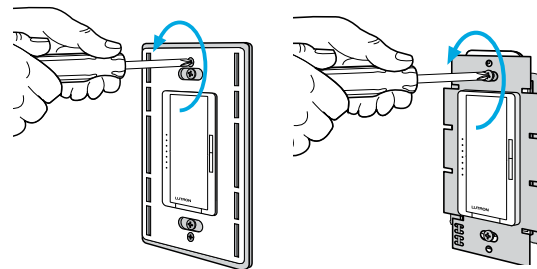
1 Turn power OFF at circuit breaker!



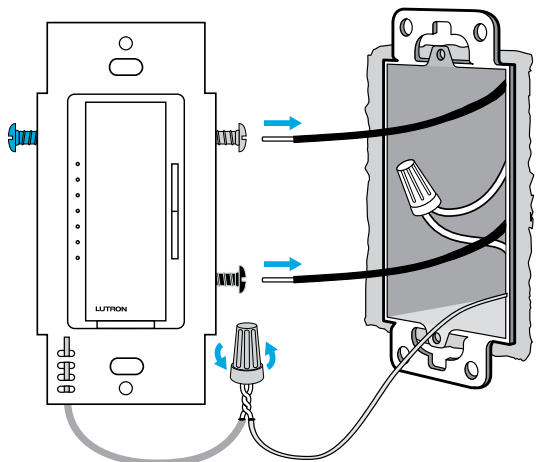
WARNING: SHOCK HAZARD. May result in serious injury or death. Turn off power at circuit breaker or fuse before installing.

2 Remove existing dimmer

Pull off wallplate cover, unscrew wallplate adapter, and remove screws that attach the dimmer to the wallbox.



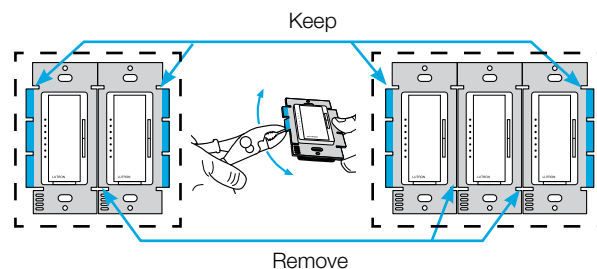
Disconnect wires and remove nut from ground wires.



3 Remove middle sections (if ganging devices)

Remove middle sections if mounting 2 or more devices side by side. See maximum ratings chart for new wattage limits.

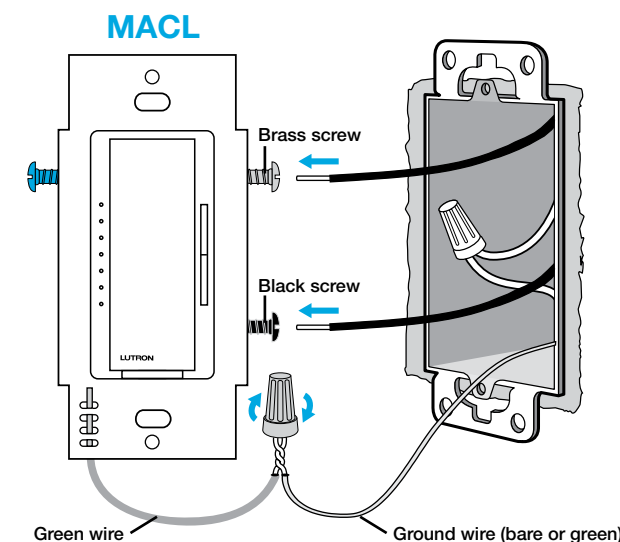
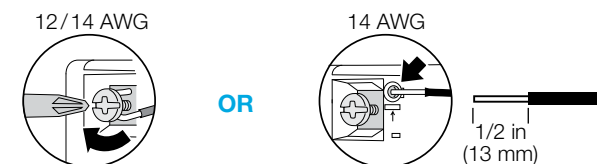
NOTE: No derating is required when using only CFLs or LEDs.



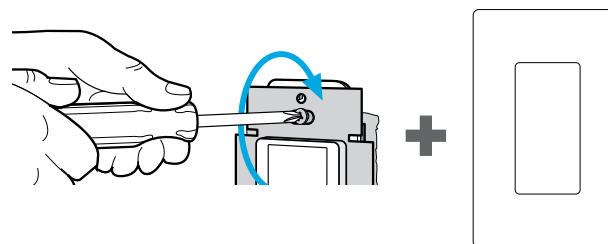
MAXIMUM RATINGS FOR MIXED LOAD TYPES

LED	CFL	Incandescent/Halogen
0 W	+	600 W
1 W – 25 W	+	500 W
26 W – 50 W	+	400 W
51 W – 75 W	+	300 W
76 W – 100 W	+	200 W
101 W – 125 W	+	100 W
126 W – 150 W	+	0 W

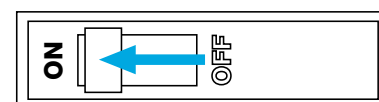
4 Connect the new dimmer (MACL)



5 Mount dimmer using the provided screws

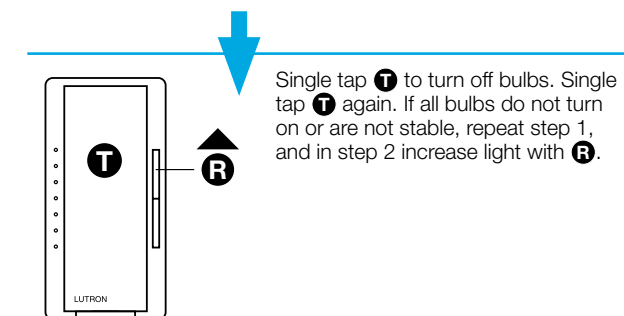
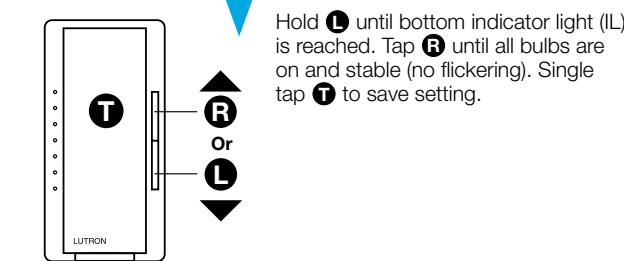
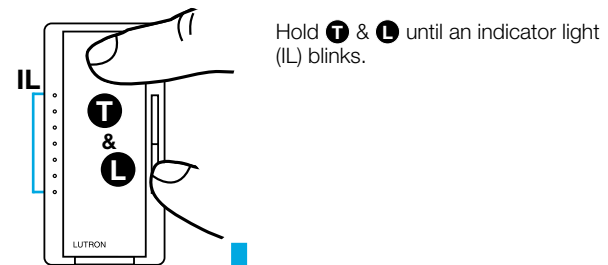


6 Turn power ON at circuit breaker

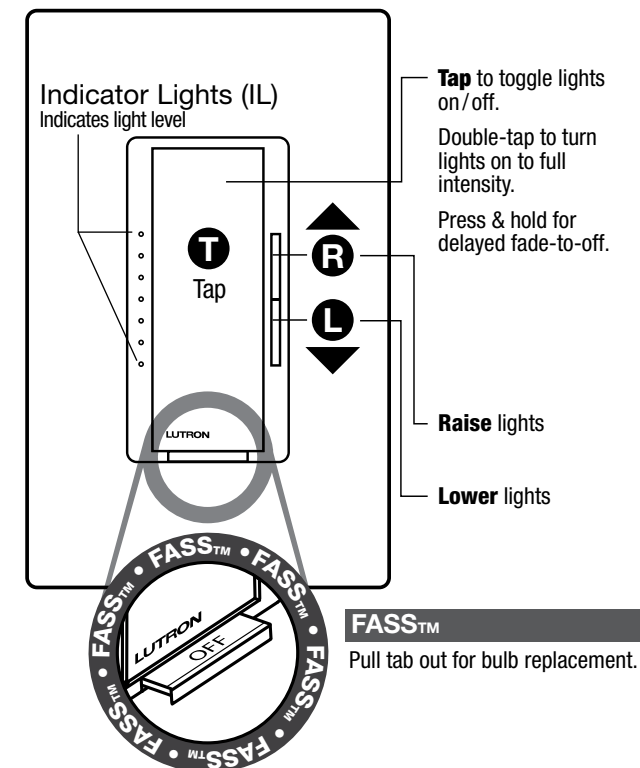


OPTIONAL

7 Adjust dimming range



OPERATION



help

U.S.A. | Canada | Caribbean 1.800.523.9466
Mexico +1.888.235.2910
Others +1.610.282.3800
Fax +1.610.282.6311

www.lutron.com/macl

Limited Warranty:
http://www.lutron.com/TechnicalDocumentLibrary/369-119_Wallbox_Warranty.pdf

©2013-2015 Lutron Electronics Co., Inc.

Lutron, Lutron, Claro, Satin Colors, Maestro, and C•L are registered trademarks of Lutron Electronics Co., Inc.

For lights switched from two locations:

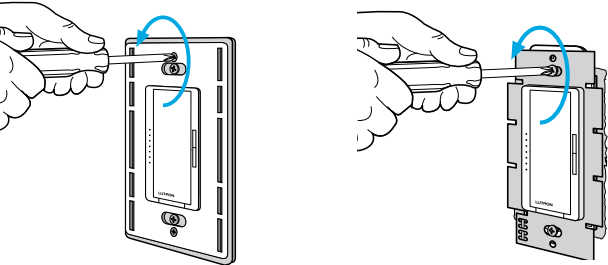
1 Turn power OFF at circuit breaker!



WARNING: SHOCK HAZARD.
May result in serious injury or death. Turn off power at circuit breaker or fuse before installing.

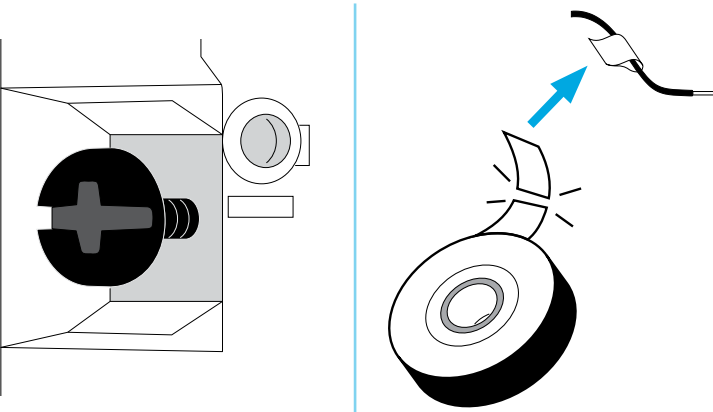
2 Remove (but do not disconnect) existing dimmers

Pull off wallplate cover, unscrew wallplate adapter, and remove screws that attach the dimmer to the wallbox. Do not disconnect wires from the dimmer.



3 Mark wire on the COMMON terminal

On both existing devices, mark the wire (for example, using electrical tape) that is connected to the screw that is a different color than all the others. This will be the black screw on a Lutron® dimmer. **Does not include the ground screw.**



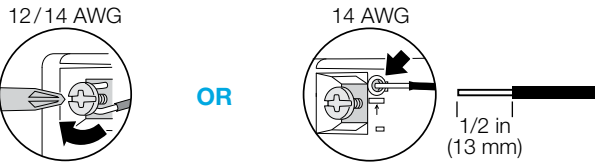
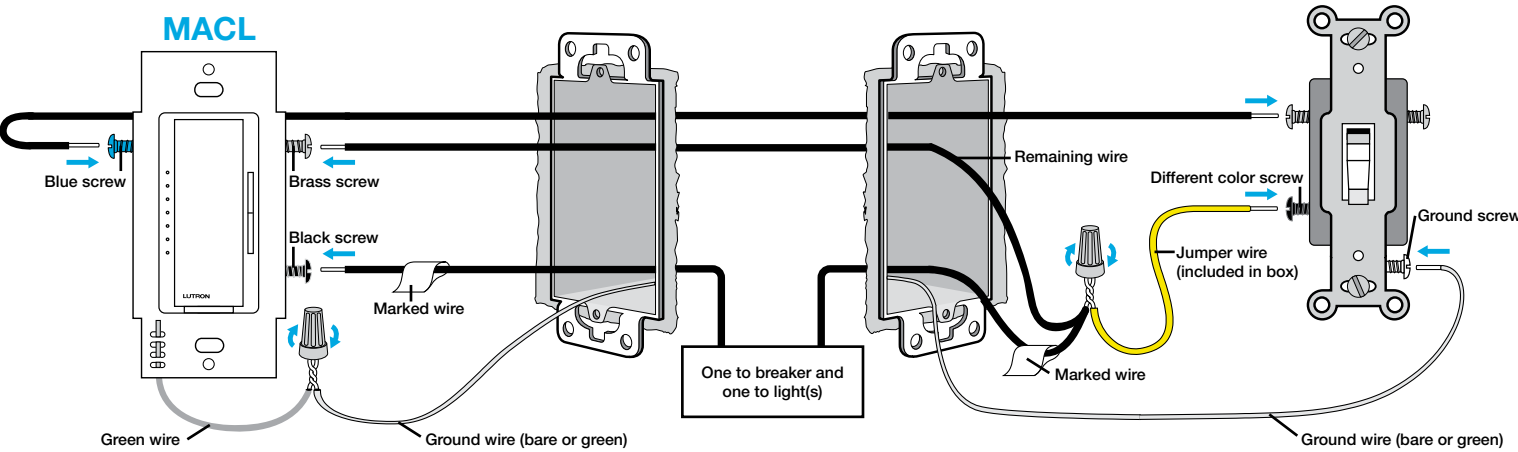
4 Disconnect wires

5 Remove middle sections (if ganging devices)

See Step 3 on reverse for details.

Choose one of the two wiring scenarios shown below (6a or 6b):

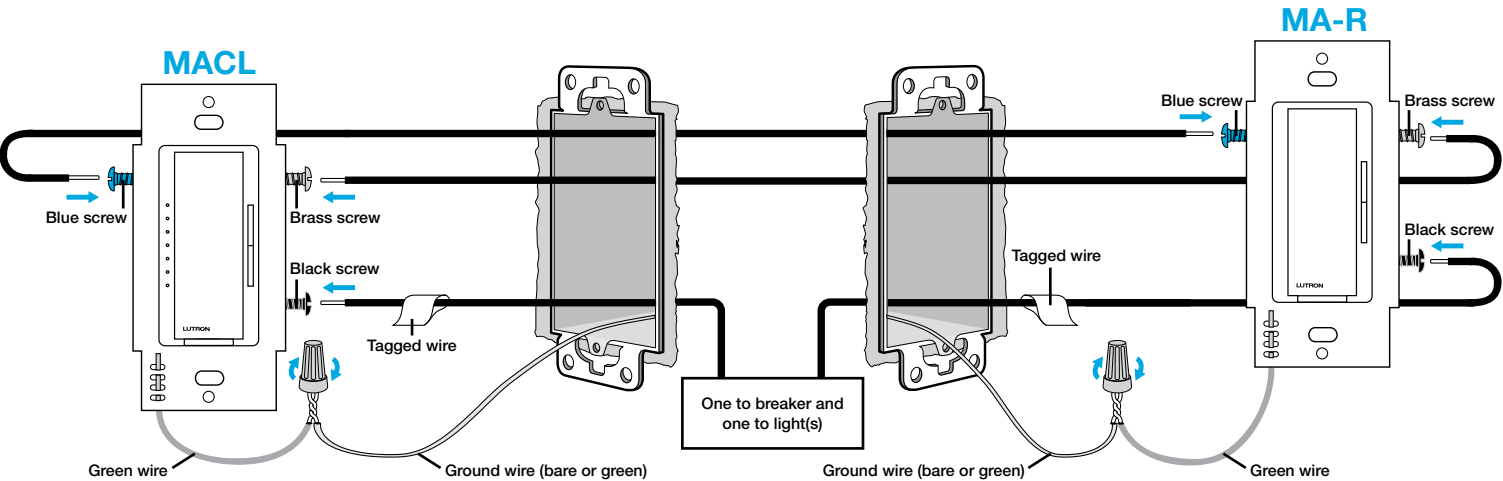
6a Connect the new MASTER dimmer (MACL) and re-wire OTHER EXISTING switch



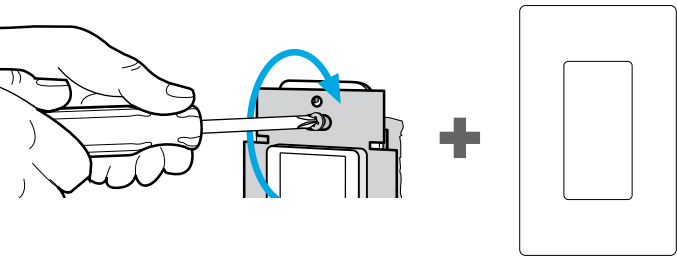
You MUST perform Step 9 (at right) for dimmer to work correctly.

OR

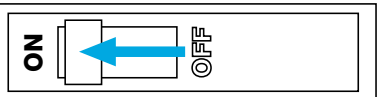
6b Connect the new MASTER dimmer (MACL) and a Maestro® COMPANION dimmer (MA-R, MSC-AD)



7 Mount all devices using the provided screws

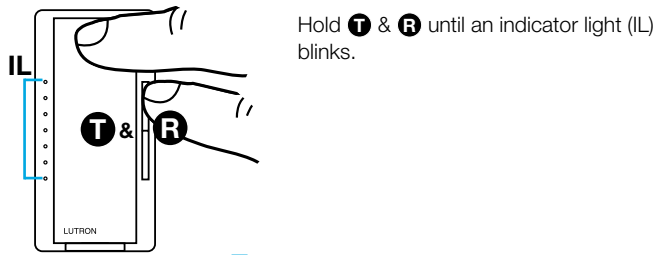


8 Turn power ON at circuit breaker



9 Program MASTER dimmer for use with existing switch

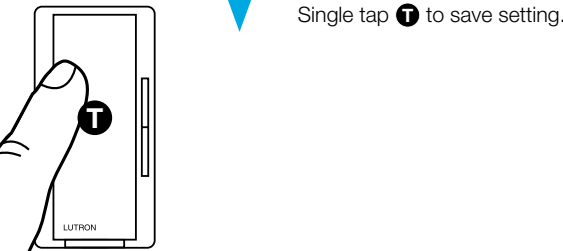
SKIP THIS STEP IF YOU ARE USING A MAESTRO® COMPANION DIMMER



Hold **T** & **R** until an indicator light (IL) blinks.



Using **L**, select **IL 1** when an existing switch is being used. *IL4 is the default for a Maestro® Companion Dimmer.*



Single tap **T** to save setting.

OPTIONAL

10 Adjust dimming range

See Step 7 on reverse for details.