

Roller Shade Bracket Retrofit Kit

Bracket Wedge Locks

CAUTION: RISK OF FALLING OBJECTS. Read and follow all instructions for installing the Bracket Wedge Locks. Failure to follow these instructions could result in minor to moderate injury.

1 Confirm the Retrofit is Applicable

Bracket Wedge Locks reinforce and secure the mounting of Serena® and Sivoia® QS Triathlon™ roller shades* which may be subject to external impacts from below.

* This retrofit is intended for all battery-powered shades, wired-power shades with fascia, and cordless manual shades with fascia. It is unnecessary and incompatible with wired-power and cordless manual shades which are not fascia-equipped.

After verifying the shade is battery-powered or fascia-equipped, begin with Section 2 and follow all the steps in this document to Install the Bracket Wedge Locks.

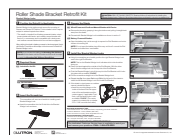
NOTE: If you will also be adding the **Mounting Rail Stiffener Retrofit** to this shade, set this kit aside and follow all the steps to install the **Mounting Rail Stiffener Retrofit** first.

2 Required Items

2.1 Included in the Kit:



(2) Bracket Wedge Locks



Instructions

2.2 Not Included:

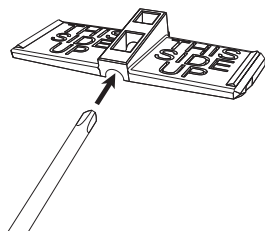


#3 (5/32 in) Phillips Screwdriver

3 Insert the Screwdriver

The screwdriver will serve as a handle for installing each Bracket Wedge Lock.

- Insert the screwdriver into the Guide Hole of a Bracket Wedge Lock as shown.



4 Prepare the Shade

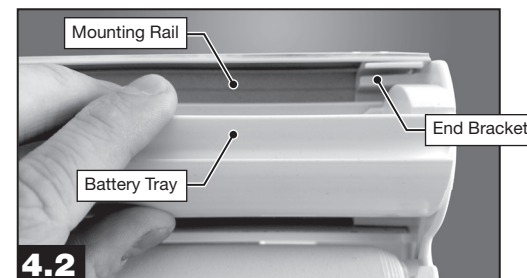
4.1 Wired-Power and Cordless Manual Shades with Fascia:

- Remove the fascia by grasping it along the bottom and pulling it straight back away from the shade.
- Proceed with Bracket Wedge Lock installation as shown in section 5.

4.2 Battery-Powered Shades:

- Open the battery tray just far enough to expose the End Brackets and inside surface of mounting rail.

NOTE: Do not open the battery tray all the way, as this will conceal the End Brackets and make them inaccessible.



5 Install the Bracket Wedge Locks

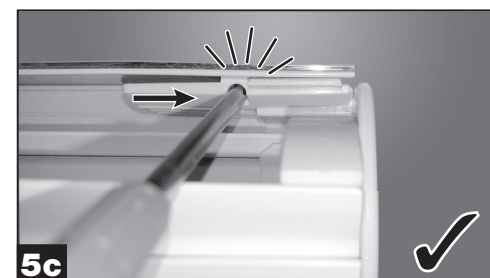
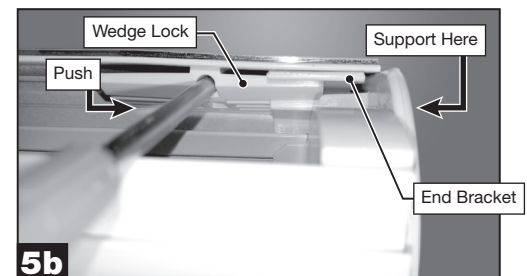
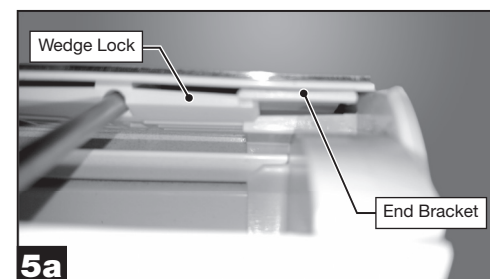
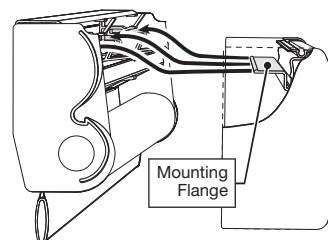
- Using the screwdriver as a handle, position the right Bracket Wedge Lock next to the right End Bracket.

NOTE: Text on the Bracket Wedge Lock indicates which side should be facing up.

- Press one hand against the outside of the End Bracket. With the other hand, slide the wedge lock into the top slot of the End Bracket.
- Push the Bracket Wedge Lock all the way into the End Bracket until it locks into place with an audible **"CLICK!"**
- Pull the screwdriver straight out of the Bracket Wedge Lock.
- Repeat step 3a, then steps 5a through 5d at the left end of the shade to install the left Bracket Wedge Lock into the left End Bracket.

- If the shade is wired-power or cordless manual, reinstall the fascia:

- Insert the mounting flange on the inside of the fascia into the upper slots of the end brackets and the center support, if applicable. Push firmly until the fascia locks in with an audible **"CLICK!"** (The center support is included only on shades 53 in / 1346 mm wide and wider.)



Worldwide Headquarters | USA

Lutron Electronics Co., Inc. 7200 Suter Road, Coopersburg, PA 18036-1299 USA
Customer Assistance: 1.844.LUTRON1 (588-7661)
Online: www.lutron.com/help | Email: Support@Lutron.com

Europe Headquarters | United Kingdom

Lutron EA Ltd, 6 Sovereign Close, London, E1W3JF, UK
TEL: +44.(0)20.7702.0657 | FAX: +44.(0)20.7480.6899
Technical Support: +44.(0)20.7680.4481 | FREEPHONE: 0800.282.107

Our dedicated Customer Service team is available to assist you and answer your questions. **CALL: 1-844-478-2033**